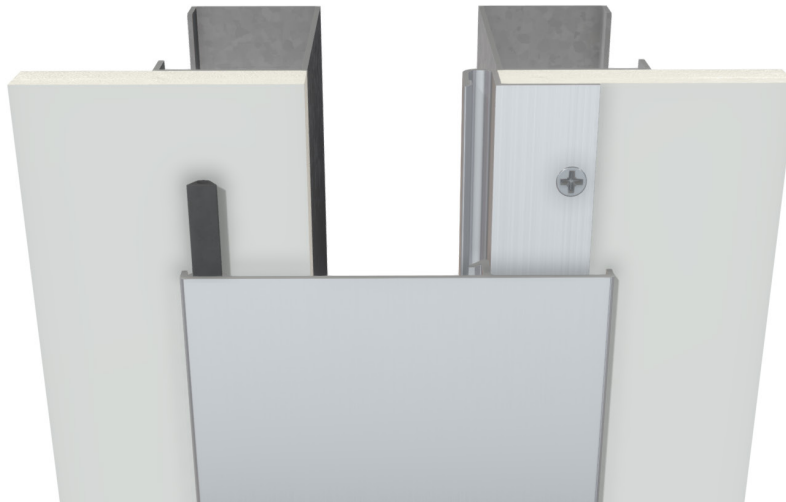


ASM Series



Model ASM

This surface-mounted metal wall and ceiling cover is designed for interior applications where low maintenance or tamper-resistant applications are desired. The free-floating aluminum center plate spans the joint and slides over the surface of the wall or ceiling to allow movement when required. The cover can be painted to match nearly any finish and is available in multiple metal finishes.

Advantages

- Low maintenance
- No exposed fasteners for tamper-resistance
- Corresponding floor covers for a seamless sight line
- Installs in a variety of wall construction
- Paint to match surrounding finishes



[View 3D Model](#) →

ASM Series

Product Details

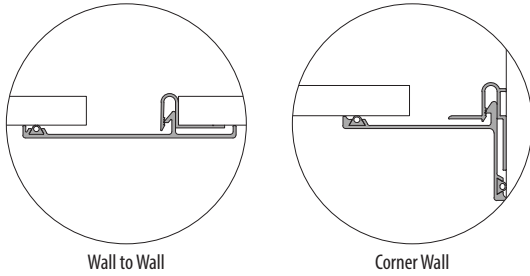
- Joint sizes range from 1" to 4" (25.4mm to 101.6mm)
- 10' (304.8cm) stock lengths
- Meets ASTM E1399



Vapor Barrier

Fire Barrier

Model Details



Wall to Wall

Corner Wall

MODEL	WALL TO WALL CEILING TO CEILING	CORNER WALL CORNER CEILING	STAINLESS STEEL	BRONZE
ASM	•			
ASM-S	•		•	
ASM-B	•			•
ASMC		•		
ASMC-S		•	•	
ASMC-B		•		•

Standard Finish



Clear Anodize

Premium finishes are available in Kynar, Powder Coat Bronze and Stainless Steel options. See all finish options online at c-sgroup.com.

Aluminum in contact with concrete/masonry will have a 2 mil, heavy metal free, high solids primer

Warranty

- Standard Five-Year Warranty



Learn More →