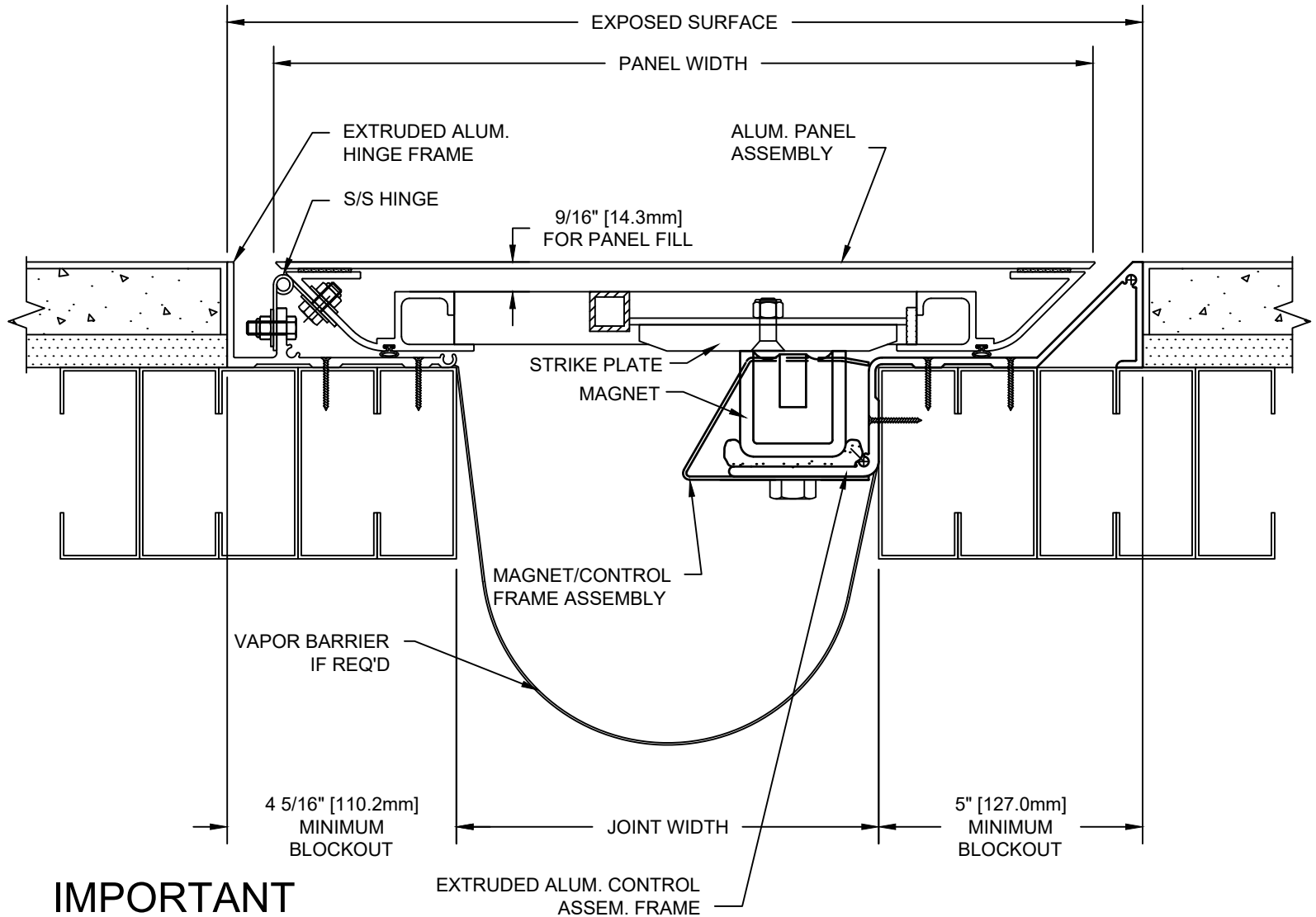


# MODEL XLP INSTALLATION INSTRUCTIONS



## IMPORTANT INFORMATION

Prior to the commencement of Installation all material **MUST** be inspected for Damage. Any damage must be reported to Construction Specialties as soon as possible, so that replacement materials may be furnished without delay.

All work must be completed as per Architects Approved "Shop Drawings", and in accordance with these Installation Instructions. When installation is complete, all materials must be protected from damage until the Architects FINAL INSPECTION.

All materials should be arranged in the order that they are to be installed. All hardware required for each portion of the work should be placed with the appropriate materials.

Please review all Approved Shop Drawings and this Document to familiarize yourself with all the details and components of this assembly.

## IMPORTANT:

**READ THROUGH ALL INSTRUCTIONS PRIOR TO STARTING INSTALLATION**

5/21/26

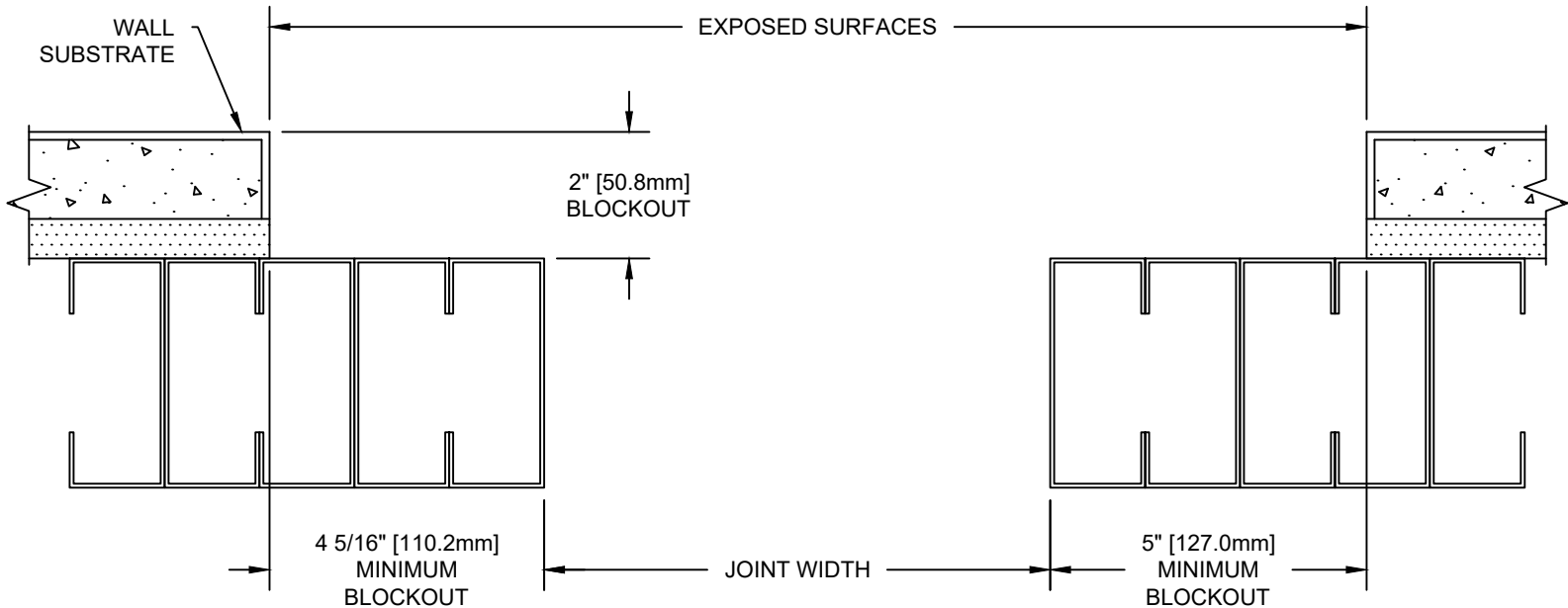


**Construction Specialties™**

6696 Route 405 Highway, Muncy  
 717-268-8493 Fax (570) 546-5169  
 www.csgroup.com

This document is the property of Construction Specialties, Inc. and contains CONFIDENTIAL PROPRIETARY INFORMATION that is not to be disclosed to third parties and is not to be used without approval in writing from Construction Specialties, Inc.

# GENERAL NOTES



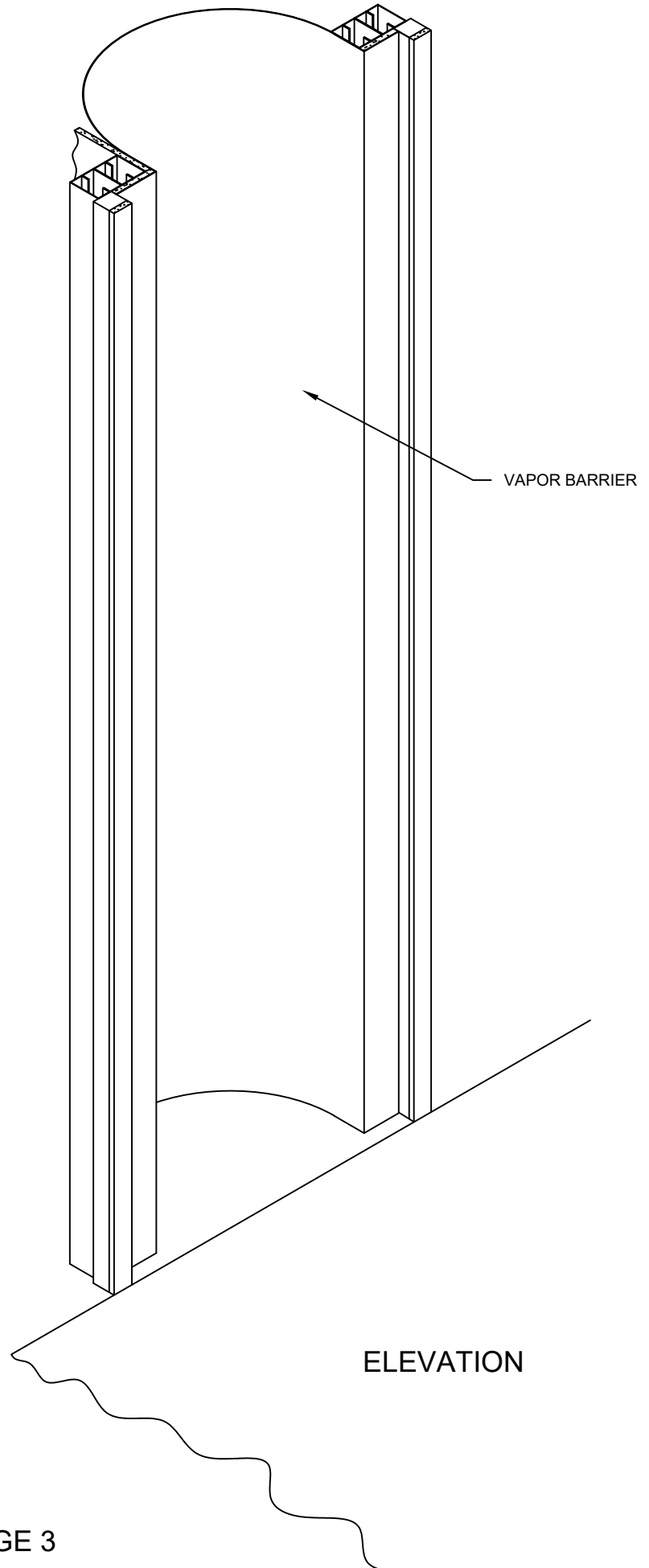
- 1.) Before beginning installation of the "XLP" joint covers, review the layouts for the various runs of joint cover as detailed on the approved Construction Specialties shop drawings.
- 2.) The "XLP" series Joint Covers must be securely mounted to a structurally sound wall. Repair all damage to the blockouts before beginning installation.
- 3.) The blockouts in which the covers are to be mounted must be **flat, level and parallel**. **The base of the blockout must be flat (along the length of the joint) to within +/-1/16" [1.6mm] and level (across the joint) to within +/-1/16" [1.6mm].**
- 4.) The blockout width shown on the Construction Specialties shop drawings is a minimum width dimension. The blockout may be made wider to allow for greater installation tolerance.
- 5.) The surface of the blockouts must be clean and free from any loose dust, dirt, debris and oils that would affect the installation of the covers.
- 6.) It is possible that the expansion/seismic joint may have experienced some amount of movement at the time of installation. For proper installation of the "XLP" covers, the joint width **must be within +/-1/4" [6.4mm] of nominal**. If the joint width at the time of installation is not within this tolerance, please contact the factory as some adjustments to the key installation dimensions may be required. These instructions assume that the nominal joint is within tolerance.
- 7.) Coordinate installation of cover with installation of fire barrier systems and waterstop membrane when required.

# STEP 1

## VAPOR BARRIER INSTALLATION

- 1.1) Locate the required Polyethylene Vapor Barrier for this location. Measure and cut a length of Vapor barrier for the full run. Allow extra length at top and bottom for transition and adjustment.
- 1.2) Beginning at the top end of the run, drape the barrier down the joint and position it at the joint as indicated.
- 1.3) Use clamps, duct tape or pins to temporarily hold the Vapor barrier until frame installation.

Note: If a splice or base closure is required, refer to Installation Instruction sheet 12AX.



# STEP 1

## MAGNET/CONTROL FRAME INSTALLATION

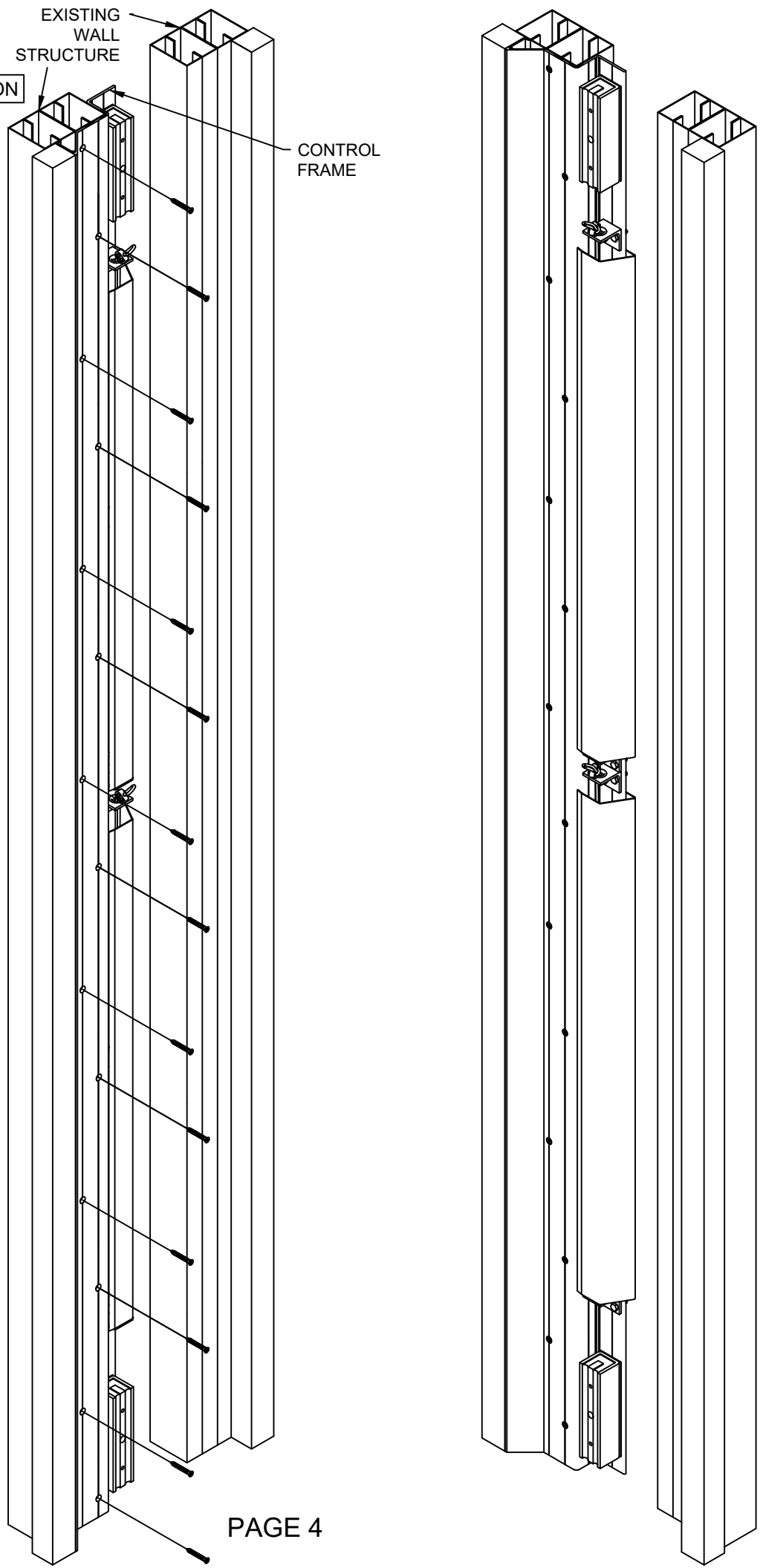
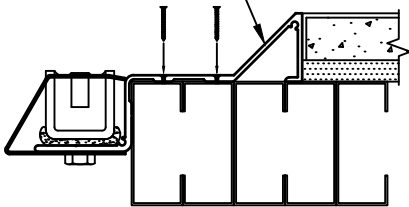
**Note:** If a vapor barrier is required, ensure that it is positioned correctly before placing the EJC frame members.

1.1) Start the installation by inserting alignment pins into the top of the Magnet/Control Frame Assembly.

1.2) Place the Magnet/Control Frame Assembly in the left side blockout. Once the assembly is correctly positioned and it is plumb and square, secure the top and bottom of the Frame using the Construction Specialties supplied fasteners.

1.3) Continue the installation of the fasteners in each location in the front flange. The fastener locations are max. 18" [457.2mm] on center along the length.

MAGNET/CONTROL  
FRAME ASSEMBLY



# STEP 2

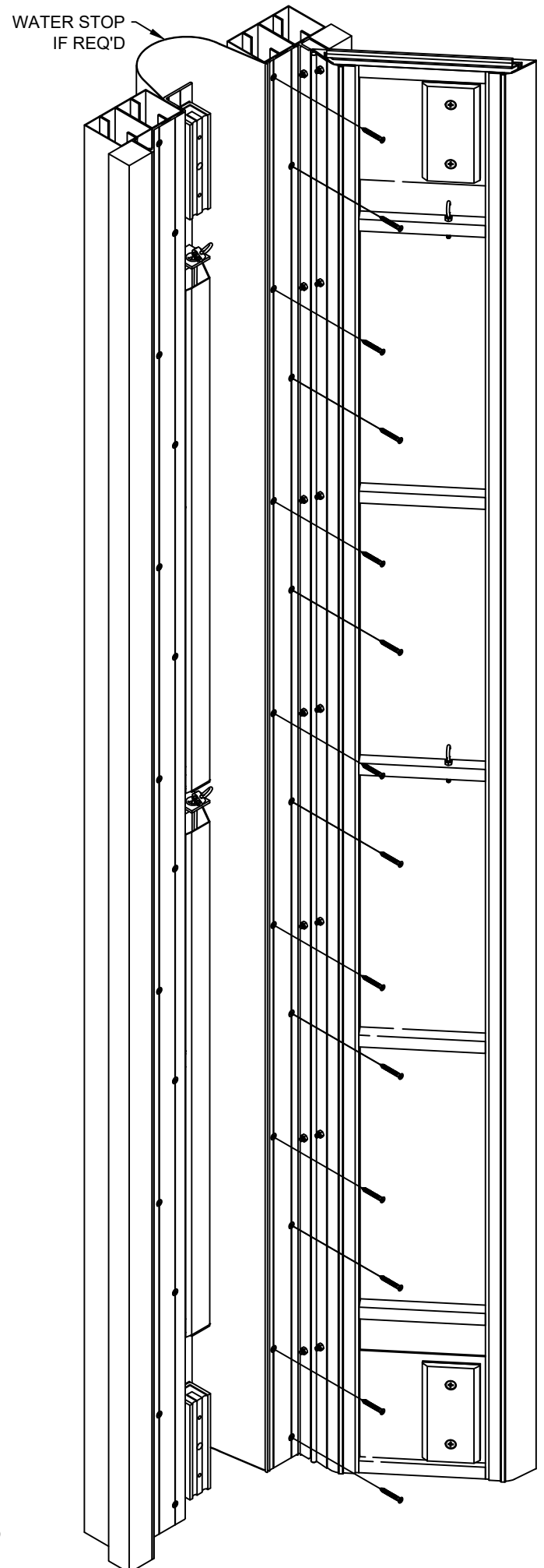
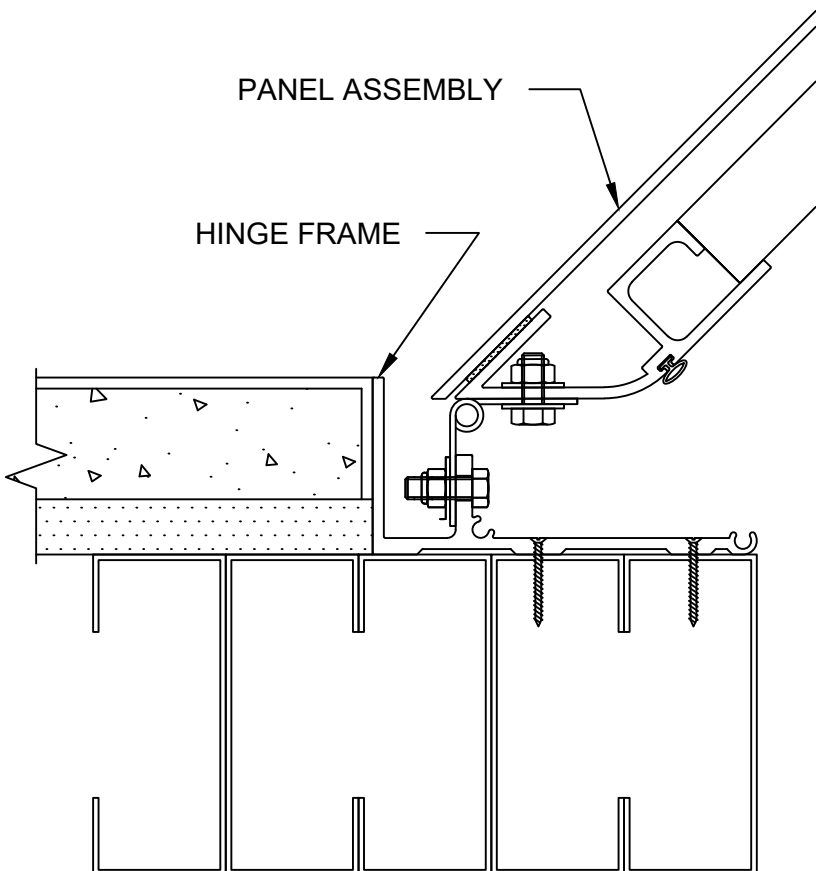
## HINGE FRAME / ALUM. PANEL ASSEMBLY INSTALLATION

Note: Care must be taken in the handling of the Panel Assembly during installation to avoid damage to the finished surfaces.

2.1) Start the installation of the Hinge Frame / Panel Assembly by inserting alignment pins in the top of the Frame if needed.

2.2) Place the Hinge Frame / Panel Assembly in the opposite side breakout. Position the Frame so that the front edge is parallel and plumb to the front edge of the Control Frame Assembly. Once the assembly is properly positioned, secure the top and bottom of the Frame using the Construction Specialties supplied fasteners.

2.3) Continue the installation of the fasteners until all locations have been completed. The fastener locations are 18" [457.2mm] on center along the length.



# STEP 3

## ATTACH PANEL CONTROL CORD

Once the Frames have been installed, the following steps must be performed to complete the installation:

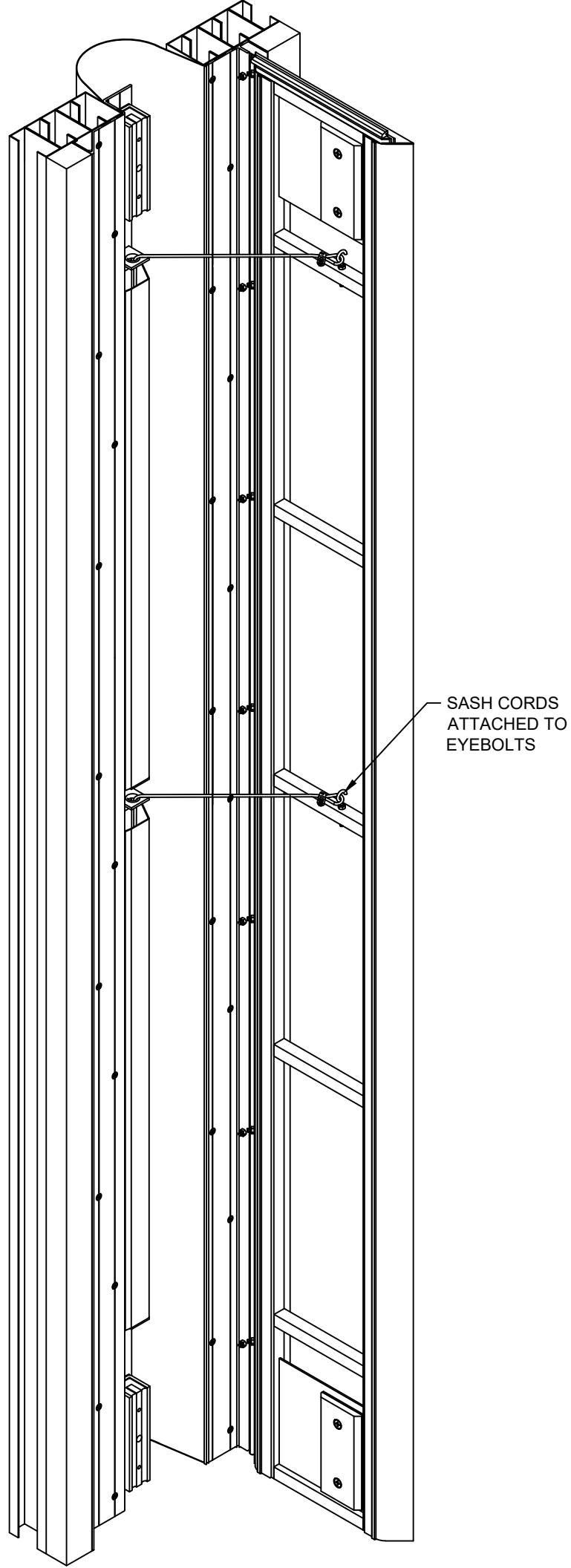
Note: Each XLP assembly contains two magnets. The magnets are located at the top and bottom of the Control Frame. For shipment each Magnet is protected with a piece of cardboard. This cardboard cover also prevents accidental latching of the Strike Plate to the Magnets. **Note: Do not remove the cardboard and do not allow the Panel Assembly to close on the magnets at this time. Each magnet has a pull force of 400 lbs. Removing the cardboard at this point could cause injunt and/or may require prying to reopen the cover.**

4.1) At the top of each Control Assembly there will be a looped cord on top of the Control Angel. Place the loops on the end of the Panel Control Cord over the eye bolts on the backside of the Panel Assembly.

4.2) Ensure that all work has been completed on the Frame / Panel Assembly installation and the joint area is clear of debris.

4.3) While holding onto the Panel Assembly, remove the clamps on the Control Cord and allow the Panel to close slowly against the Control Frame and cardboard covered magnets.

Installation of this unit is complete. The Magnet cardboard covers should not be removed until installation of all units for this location are complete.



# STEP 4

## INSTALL ADDITIONAL LENGTHS/UNITS

5.1) Reference the details at right for Magnet/control and alignment and condition at typical Panel Assembly joints.

5.2) Once the bottom unit has been installed, follow steps 1 through 4 to continue the installation process for the remaining XLP covers.

5.3) After all units have been installed for the full height and no further work is required inside the joint, remove the cardboard covers from the magnet and carefully allow the Panel to close onto the Magnets. The Panels should latch securely.

Installation is complete.

