

## FRW-451 FEATURE RAIL

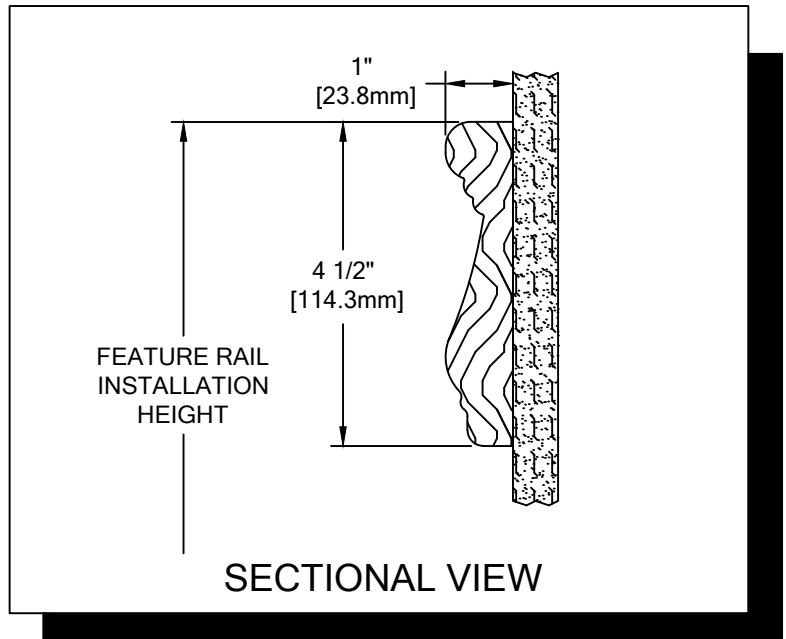
### PLEASE READ

PLEASE READ THESE INSTRUCTIONS THOROUGHLY PRIOR TO BEGINNING THE FRW-451 FEATURE RAIL INSTALLATION!

THIS INSTRUCTION SHEET IS INTENDED TO PROVIDE A SPECIFIC GUIDE TO FOLLOW FOR THE INSTALLATION OF THIS FRW-451 FEATURE RAIL. CONTAINED WITHIN IS THE TECHNICAL INFORMATION AND INSTALLATION TECHNIQUES REQUIRED TO COMPLETE AN EFFICIENT, NEAT AND LONG-LASTING INSTALLATION.

INSPECT ALL MATERIALS FOR DAMAGE OR MISSING PARTS. IF YOU DISCOVER DAMAGED OR MISSING MATERIALS, IN THE USA PLEASE NOTIFY THE FACTORY AT (800) 233-8493, AND IN CANADA (888) 895-8955 FOR CUSTOMER SERVICE.

FRW-451 FEATURE RAIL MUST BE INSTALLED IN ACCORDANCE WITH THESE INSTRUCTIONS! FAILURE TO FOLLOW THESE INSTRUCTIONS MAY VOID ANY PRODUCT WARRANTIES AND RESULT IN AN UNSUCCESSFUL INSTALLATION. FOR SPECIFIC QUESTIONS REGARDING THE INSTALLATION OF THIS FRW-451 FEATURE RAIL PLEASE CALL THE FACTORY IN THE USA AT (800) 233-8493 OR EMAIL [IWPTECHSUPPORT@C-SGROUP.COM](mailto:IWPTECHSUPPORT@C-SGROUP.COM). IN CANADA CALL (888) 895-8955.



### IMPORTANT NOTES

1. DUE TO THE NATURE OF WOOD, COMPONENT COLORS MAY VARY. SORT WOOD COMPONENTS AND MATCH PARTS BY COLOR.
2. ALL LINEAL MATERIAL TO BE SUPPLIED IN STOCK LENGTHS. WOOD IN 7'-0" TO 12'-0" VARIABLE. THIS MATERIAL IS TO BE FIELD CUT USING QUALITY EQUIPMENT TO INSURE THAT ALL CUTS ARE SQUARE. WHEN CUTTING MATERIAL SECTIONS, CS RECOMMENDS USING AN 80-100 TOOTH CARBIDE TIPPED SAW BLADE OR EQUIVALENT, TO MINIMIZE CHIPPING AND MAINTAIN JOINT ALIGNMENT.
3. RADIAL MATERIAL MAY BE SUPPLIED FACTORY FORMED OR IN STRAIGHT LENGTHS FOR FIELD FORMING. CONSULT FACTORY FOR OPTIONS.
4. ALL WALL SURFACES MUST BE CLEAN, SMOOTH, DRY AND FREE OF ANY LOOSE PAINT OR ANY OTHER IRREGULARITIES WHICH WOULD PREVENT GOOD ADHESION.
5. ALL DIMENSIONS ARE TYPICAL.
6. MATERIAL MUST REACH 65°F MIN. TO 75°F MAX. 24 HOURS PRIOR TO INSTALLATION. THIS IS ESSENTIAL TO MINIMIZE EXPANSION AND CONTRACTION OF MATERIAL.
7. END CAPS AND INSIDE/OUTSIDE CORNERS ARE TO BE FIELD MITERED.
8. SPLICES ARE TO BE CUT AT A 45-DEGREE ANGLE AS SHOWN IN THESE INSTRUCTIONS.
9. TANGENT POINTS ON FACTORY FORMED RADIAL MATERIAL WILL BE MARKED APPROXIMATELY AND SHOULD BE CUT TO SUIT FIELD CONDITIONS.
10. MINIMUM RUN LENGTHS FOR THIS MODEL ARE 4"[101.6mm].
11. FOR MORE INFORMATION ON FRW-451 FEATURE RAIL SEE OUR WEBSITE AT [www.c-sgroup.com](http://www.c-sgroup.com).

FRW-451 FEATURE RAIL

COMPONENTS & WALL FASTENERS



WOOD FEATURE RAIL  
(24W413xxx)



WOOD FEATURE RAIL  
(24W418xxx-GROOVED)



OPTIONAL FEATURE INSERT  
(24V011xxx)

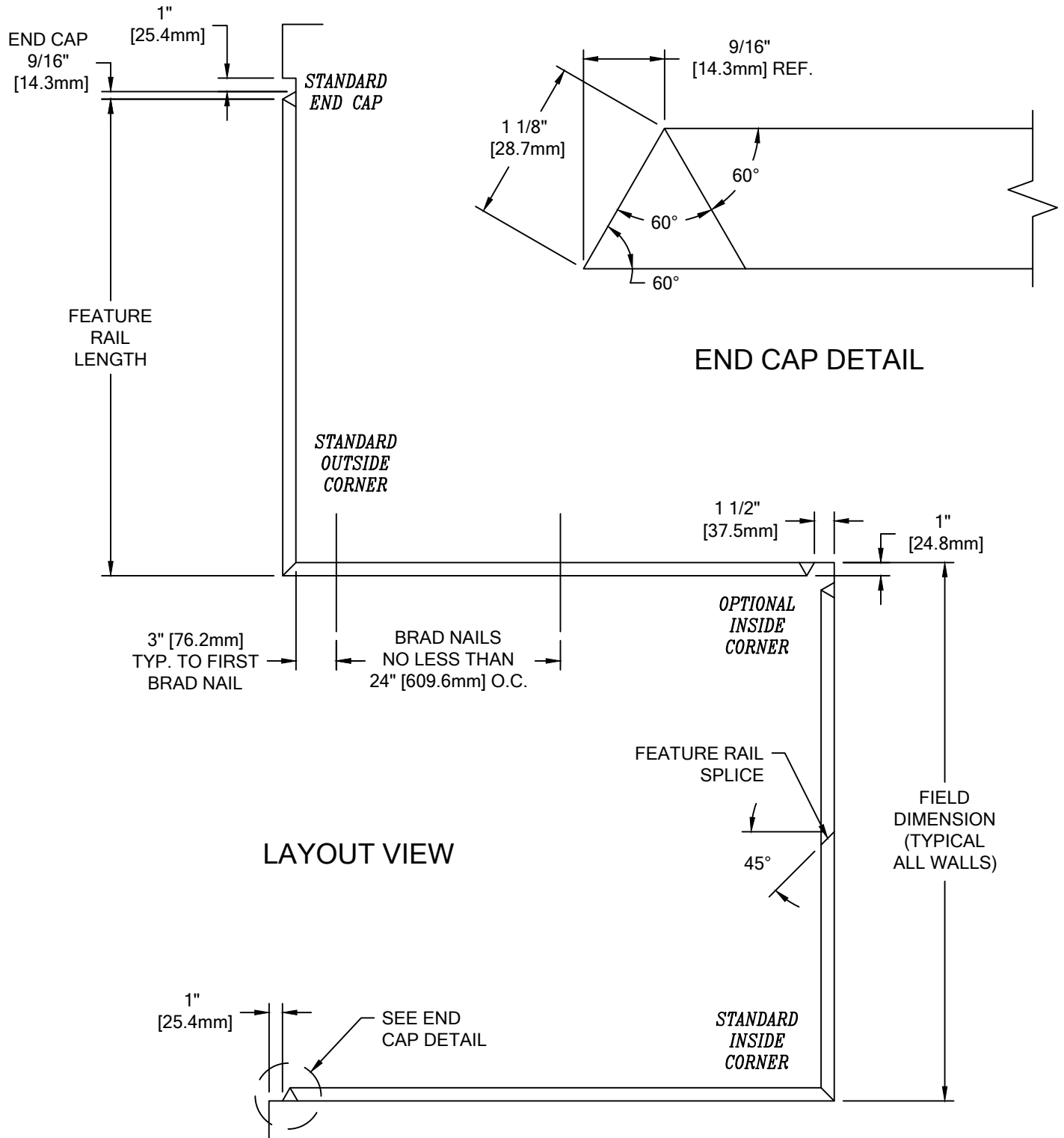


OPTIONAL STAINLESS  
STEEL INSERT  
(24S066000)

WALL CONDITION	SPECIFIED FASTENER	QUANTITY	CS PART NUMBER
STEEL STUD/GYPSUM WALL CONCRETE/CONC. BLOCK WOOD STUD/GYPSUM WALL	M1 STRUCTURAL ADHESIVE (85 L/F COVERAGE PER TUBE)	28 FL. OZ	90M135001

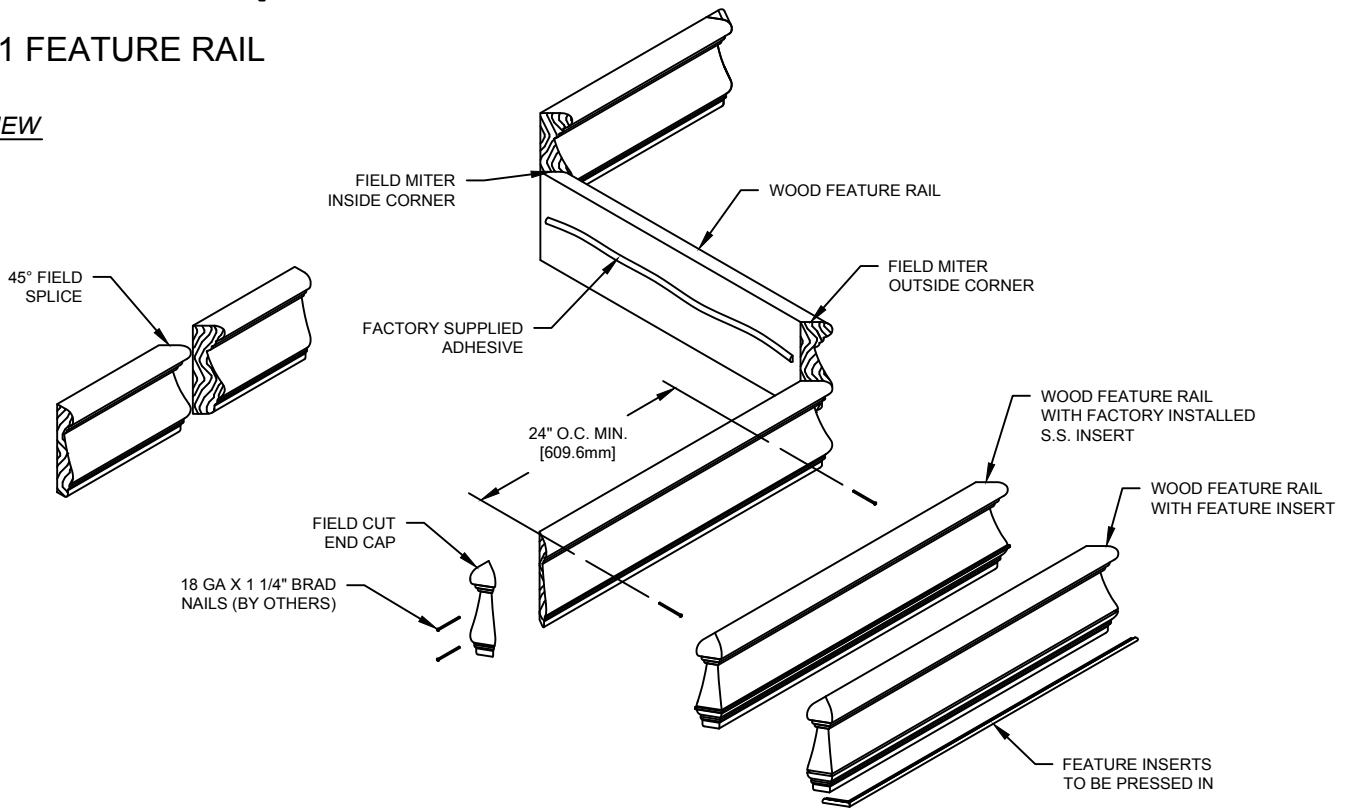
FRW-451 FEATURE RAIL

LAYOUT VIEW



**FRW-451 FEATURE RAIL**

LAYOUT VIEW



**NOTE:** INSTALLATION OF LINEAL OR RADIAL FRW-451 FEATURE RAIL SHOULD BE DONE IN ACCORDANCE WITH THE FOLLOWING INSTRUCTIONS.

1. ALL WALL SURFACES MUST BE CLEAN, SMOOTH, DRY AND FREE OF ANY LOOSE PAINT OR ANY OTHER IRREGULARITIES WHICH WOULD PREVENT GOOD ADHESION.
2. ESTABLISH FEATURE RAIL HEIGHT ABOVE FINISH FLOOR. DEDUCT 4 1/2" [114.3mm] AND SNAP A CHALK LINE AT THE BOTTOM OF THE FEATURE RAIL TO BE USED AS A GUIDE FOR ALIGNING.
3. CUT WOOD FEATURE RAIL TO LENGTH (REFERENCE LAYOUT VIEW). ALL OUTSIDE AND INSIDE CORNERS ARE TO BE FIELD MITERED. ENDS THAT RECEIVE END CAPS ARE TO BE CUT AT A 60-DEGREE ANGLE (SEE END CAP DETAIL ON PAGE 2).

**NOTE:** IT IS RECOMMENDED THAT WOOD FEATURE RAIL BE CUT WITH AN 80-100 TOOTH CARBIDE TIPPED SAW BLADE OR EQUIVALENT.

4. DUE TO COLOR MATCH, END CAPS ARE TO BE CUT FROM THE SAME FEATURE RAIL SECTION. FIELD CUT THE END CAPS WITH 60-DEGREE CUTS ON BOTH ENDS. (SEE END CAP DETAIL ON PAGE 2)
5. ATTACH END CAPS TO THE FEATURE RAIL WITH WOOD GLUE (TITEBOND IS RECOMMENDED) AND TWO 18 GA X 1 1/4" BRAD NAILS. FEATURE RAILS THAT INTERSECT AT INSIDE/OUTSIDE CORNERS ARE TO BE JOINED IN THE SAME MANNER. WIPE OFF ANY EXCESS GLUE. USE THE CS SUPPLIED COLOR MATCHED FIL-STICK TO HIDE THE BRAD NAILS. EASE THE MITERED JOINT EDGE BY ADDING A SMALL BEVEL TO ELIMINATE SHARP EDGES. TOUCH UP SANDED EDGES WITH STAIN MARKER.
6. MOUNT FEATURE RAIL TO THE WALL USING THE FACTORY SUPPLIED ADHESIVE. APPLY A 1/4" [6.4mm] BEAD OF ADHESIVE TO THE BACK SIDE OF THE RAIL. STARTING AT ONE END OF THE RUN OR INSIDE/OUTSIDE CORNER, ALIGN THE BOTTOM EDGE OF THE RAIL WITH THE PREVIOUSLY SNAPPED CHALK LINE AND PRESS FIRMLY AGAINST THE WALL. RUB EACH RAIL WITH A CLEAN SOFT CLOTH AND APPLY MEDIUM HAND PRESSURE TO ENSURE MAXIMUM ADHESION TO THE WALL SURFACE.

**NOTE:** WHEN FIELD FORMING RADIUS FEATURE RAIL, BE SURE TO APPLY NEEDED PRESSURE ALONG WHOLE RAIL.

7. WHILE THE ADHESIVE IS DRYING, DISCRETELY APPLY SEVERAL BRAD NAILS THROUGH THE RAIL INTO THE WALL TO HOLD THE RAIL IN PLACE. IT IS RECOMMENDED TO APPLY THE BRAD NAILS NO LESS THAN 24" [609.6mm] O.C. USE THE CS SUPPLIED COLOR MATCHED FIL-STIK TO HIDE THE BRAD NAILS.

**NOTE:** ALL INSIDE/OUTSIDE CORNERS ARE TO BE FIELD MITERED. FOR INSIDE CORNER CONDITION A FILE MAY BE USED ON BACKSIDE OF FEATURE RAIL BEFORE BEING MOUNTED ON THE WALL.

**NOTE:** SPLICES SHOULD BE CUT AT A 45-DEGREE ANGLE, AS ILLUSTRATED. STAIN MARKER SHOULD BE APPLIED TO THE CUT SURFACES OF THE FEATURE RAIL BEFORE BEING MOUNTED ON THE WALL.

**NOTE:** IF INSTALLED WITH SARATOGA WALL SYSTEM BE SURE THE BRAD NAIL IS NOT INSTALLED THROUGH THE ACROVYN SHEET.

10/28/16