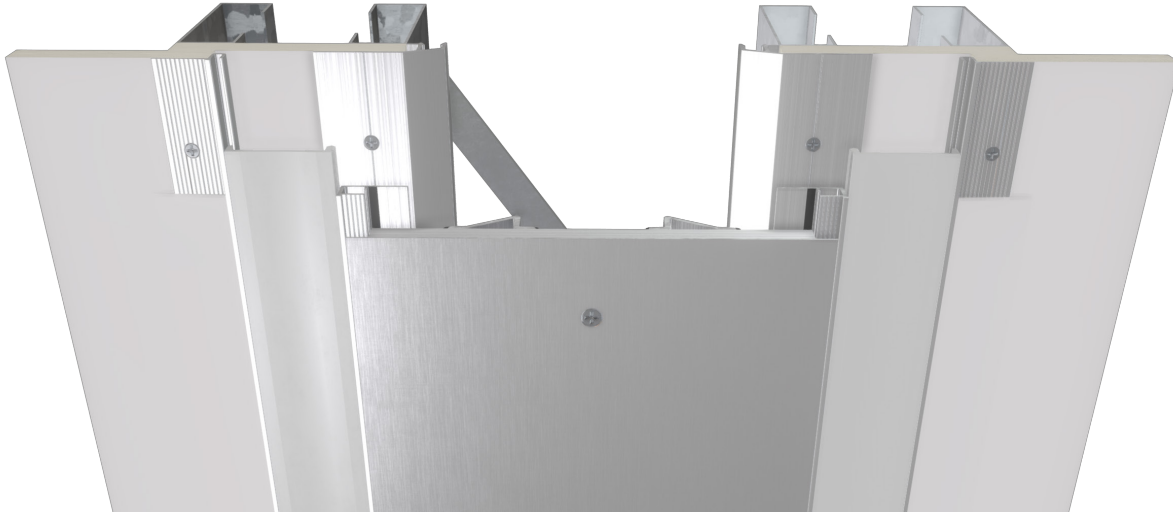


SGW Series



Model SGW

This flush, dual-gasket wall cover is ideal for interior applications with larger movement requirements. The gaskets lock into aluminum retainers, preventing hairline gaps and ensuring a hygienic seal. The cover plate can be painted to match surrounding finishes.

Advantages

- Low maintenance
- Hygienic
- Accommodates larger movement requirements
- Corresponding ceiling covers for seamless sightline
- Strong ladder frame style center section for durability
- Paint cover plate to match surrounding finishes
- Can be mounted to a variety of substrates



[View 3D Model](#) →

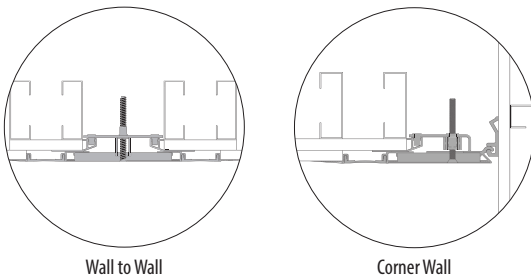
SGW Series

Product Details

- Joint sizes range from 5" to 16" (127mm to 406.4mm)
- 10' (304.8cm) stock lengths
- Self-centering center plate with turnbar
- Meets ASTM E1399



Model Details

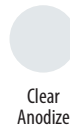


MODEL	WALL TO WALL	CORNER WALL
SGW	●	
SGWC		●

Gasket Color Options



Standard Finish - Cover Plate



Premium finishes are available in Kynar® and Powder Coat options. See all finish options online at c-sgroup.com.

Aluminum in contact with concrete/masonry will have a 2 mil, heavy metal free, high solids primer

Warranty

- Standard Five-Year Warranty



Learn More →