

# Product Lines



## Acrovyn® Wall Protection

Protect interiors in any commercial space with Acrovyn impact resistant sheet, wall panels, corner guards, handrails, and crash rails. From our standard collection to custom graphic wall protection with Acrovyn by Design®, Acrovyn will enhance and protect your interiors.



## Acrovyn® Doors

With a sturdy inner core that's clad in Acrovyn, and our Edge of a Lifetime warranty, our doors are a durable force protecting each entry. Acrovyn Doors, which are also customizable with Acrovyn by Design, can be manufactured for specific functional requirements including behavioral health, sound transmission, and more.



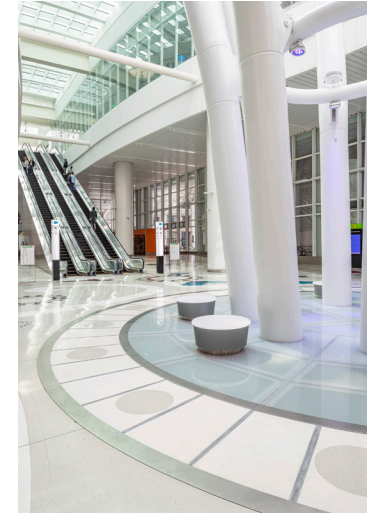
## Cubicle Curtains + Track

Reduce the risk of healthcare-associated infections (HAIs) while adding to the attractiveness of your facility's interior. Our exclusive CSelect™ fabrics are available on various CS curtain + track systems, including HUSH® and On the Right Track®, and offer coordinating disposable versions. Find your perfect blend of form and function.



## Entrance Flooring Solutions

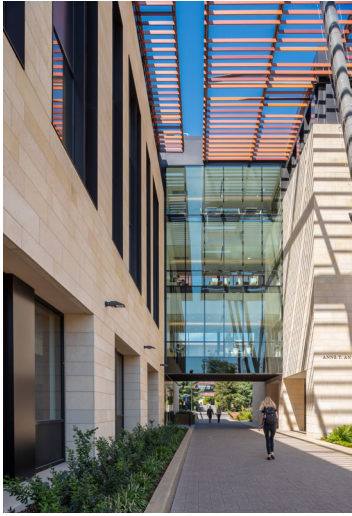
Our range of entrance flooring systems drastically reduces maintenance costs by trapping debris and moisture before they enter a building. These mats and grids keep your building clean, reduce liability, and positively impact visitors from their first step.



## Expansion Joint Solutions

Our knowledge of thermal, wind-sway, settlement, and seismic building movement allows us to offer a comprehensive line of expansion joint systems and advanced solutions for nearly any building type. These systems can be used in floor, wall, ceiling, exterior, traffic grade, and stadium applications.

# Product Lines



## Sun Control Solutions

The perfect daylight management solution lets the right amount of light in while allowing occupants to comfortably see out. From sun controls to daylight systems, we have options to reduce glare, heat gain, and energy usage. These systems can be custom designed to attach to any building type.



## Architectural Louvers

Available in a variety of profiles, our diverse line of louvers can meet the airflow requirements of any project and achieve the aesthetic you're looking for. Whether you need extreme weather performance, an eye-catching system that makes a statement, or any number of capabilities in between, we've got you—and your building—covered.



## Architectural Screens

Whether you want to conceal unsightly building components or make a striking statement, we offer a variety of decorative grilles designed for your screen and vision barrier needs. Grilles add depth and dimension to a structure and can be used in new construction or on existing building facades.



## Safety Venting

The industry's only field-testable explosion venting system, Explovent® is designed for facilities where potentially explosive atmospheres, materials, or processes exist. The lightweight panels can be tested at any time, are designed to NFPA guidelines for ultimate safety, and are resettable after an event.



## Platform™ Solutions

A game-changing collection of steel seismic stair solutions and modular stairs, balconies, and awnings. We're taking building resiliency and efficient construction practices to the next level with durable solutions that are easy to specify, reduce construction schedules, and, most importantly, enhance safety.

Discover more in our digital catalogs.



View Interior  
Product Solutions



View Architectural  
Product Solutions