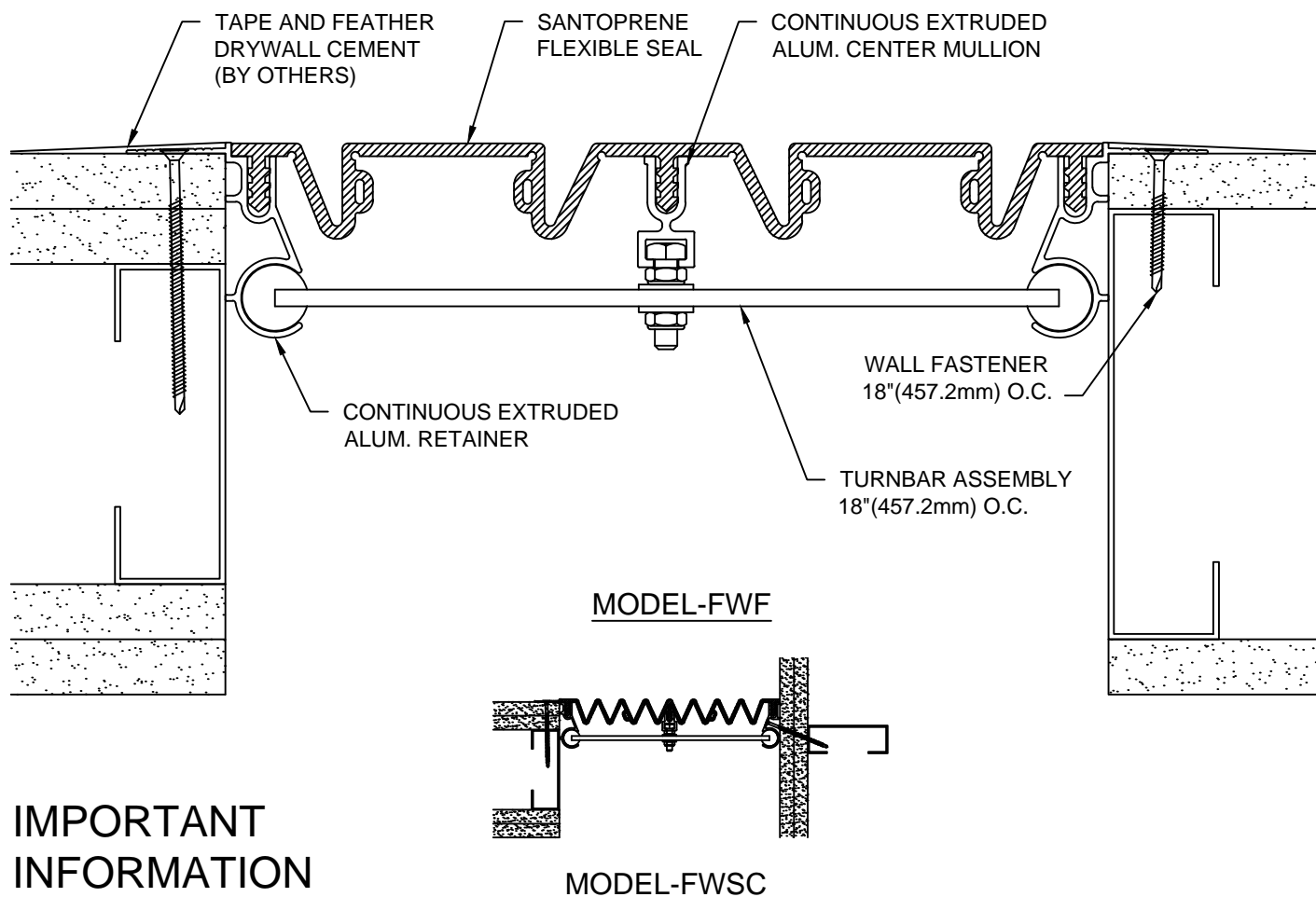


MODELS FWF/FWFC-600/1000 & FWS/FWSC-500/1000 INSTALLATION INSTRUCTIONS



IMPORTANT INFORMATION

Prior to the commencement of Installation, all materials **MUST** be inspected for Damage. Any damage must be reported to CONSTRUCTION SPECIALTIES, INC., as soon as possible, so that replacement materials may be furnished without delay.

All work must be completed as per Architect's Approved "Shop Drawings", and in accordance with these Installation Instructions. When installation is complete, all materials must be protected from damage until the Architect's FINAL INSPECTION.

All materials should be arranged in the order that they are to be installed. All hardware required for each portion of the work should be placed with the appropriate materials.

Please review all Approved Shop Drawings and this Document to familiarize yourself with all the details and components of this assembly.

IMPORTANT:

READ THROUGH ALL INSTRUCTIONS PRIOR TO STARTING INSTALLATION

9/4/13



Construction Specialties™

6696 Route 405 Highway, Muncy PA 17756
(800) 233-8493 • Fax (570) 546-5169 • www.c-sgroup.com

This document is the property of Construction Specialties, Inc. and contains CONFIDENTIAL PROPRIETARY INFORMATION that is not to be disclosed to third parties and is not to be used without approval in writing from Construction Specialties, Inc.

Notes:

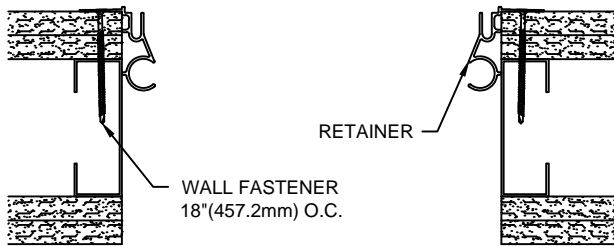
Before beginning installation, review the architectural drawings and approved Construction Specialties Inc. shop drawings to familiarize yourself with the joint cover models and locations.

Check all of the joint cover components to confirm that the correct joint cover model and size have been received. Also, check for materials that may have been damaged during shipping. Report all incorrect and/or damaged components to C/S at 800-233-8493.

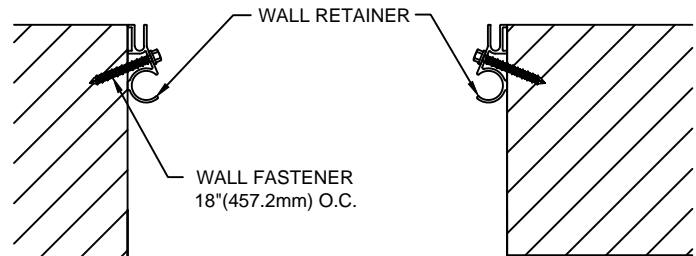
Read through all the steps of these instructions prior to beginning work.

STEP 1

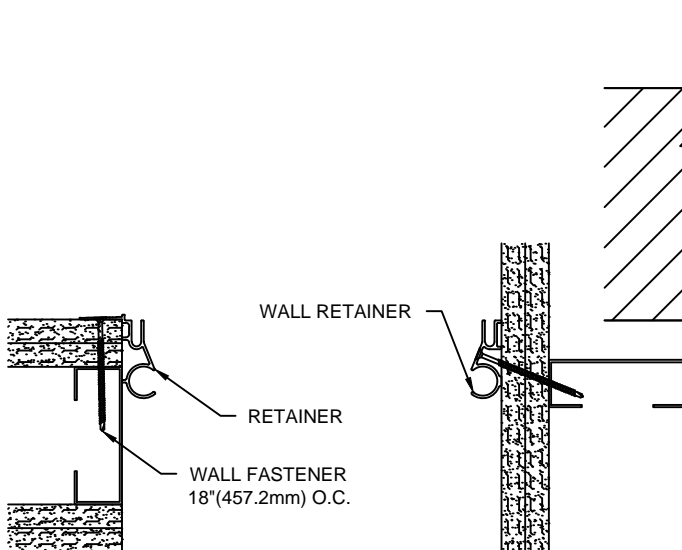
RETAINER INSTALLATION



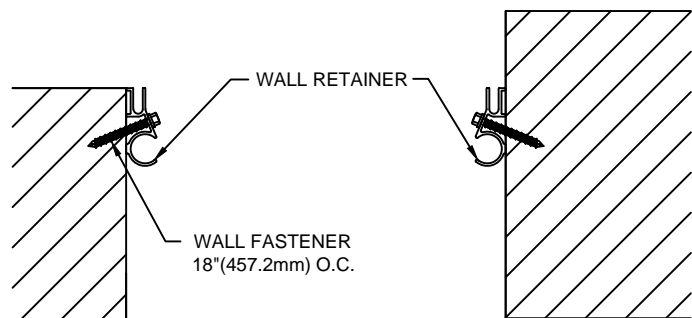
FLAT WALL CONDITION



FLAT WALL CONDITION



CORNER WALL CONDITION



CORNER WALL CONDITION

Note:

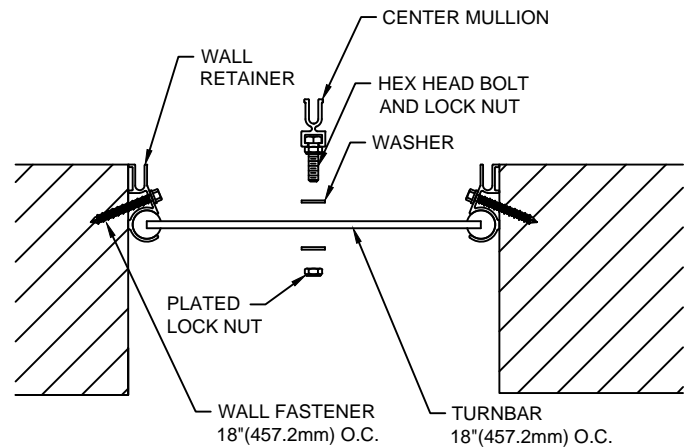
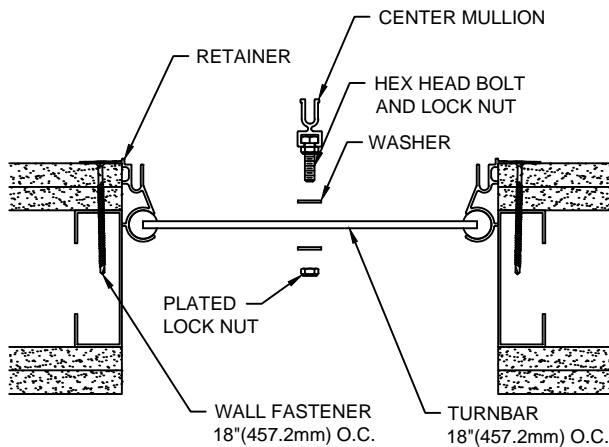
If a C/S Fire Barrier is to be installed in the joint, please review the Fire Barrier Installation Instructions supplied, and if required install the Fire Barrier **BEFORE** installation of C/S Seismic Expansion Joint aluminum frames.

Step 1:

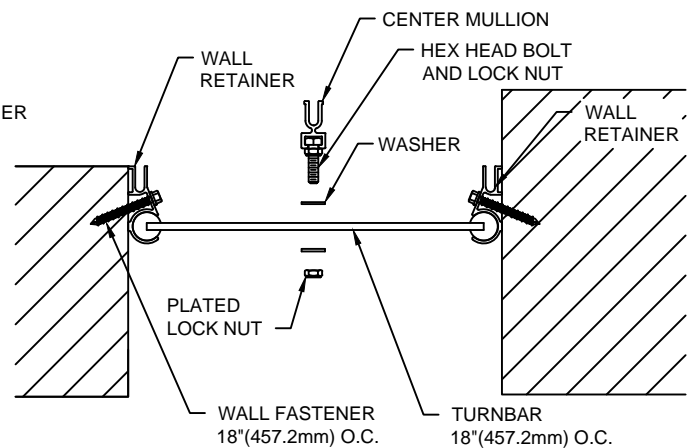
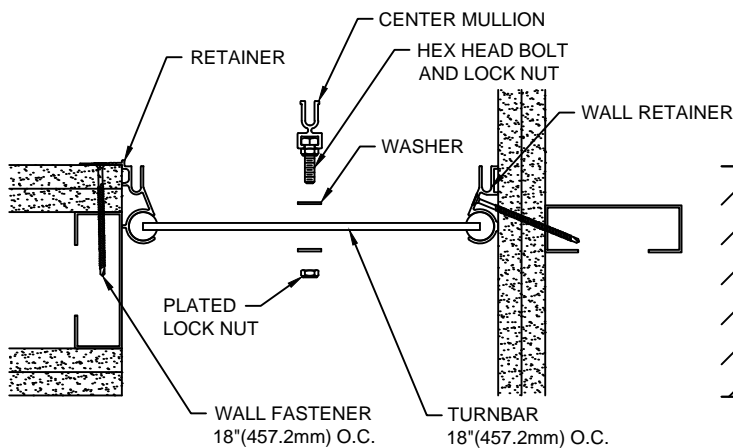
- 1.1) Measure and cut the Retainer to the appropriate length.
- 1.2) Position the Retainer on the edge of the joint wall for drywall conditions and for masonry wall conditions place the retainer in the joint opening as shown above.
- 1.3) Anchor the Retainer to the wall with the supplied fasteners and /or supplied adhesive. Note: depending on the wall construction, it may be necessary to pre-drill holes for the supplied fasteners.
- 1.4) Repeat for installation of Retainer / Wall Retainer for the other side of the joint.

STEP 2

TURNBAR ASSEMBLY ATTACHMENT



FLAT WALL CONDITION



CORNER WALL CONDITION

Note: 5" and 6" joints do not get a Turnbar.

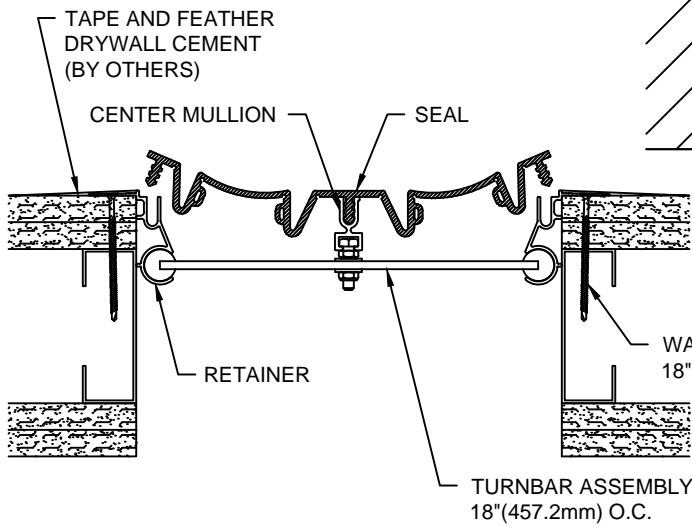
Step 2:

- 2.1) Slide the hex bolt into the Center Mullion. Place bolts at 18"(610mm) o.c. Install lock nut and tighten to keep bolt in proper location.
- 2.2) Slide Turnbars into the Retainer and match a Turnbar to each bolt on the Center Mullion.
- 2.3) Install flat washers to both sides of Turnbar and install lock nuts.

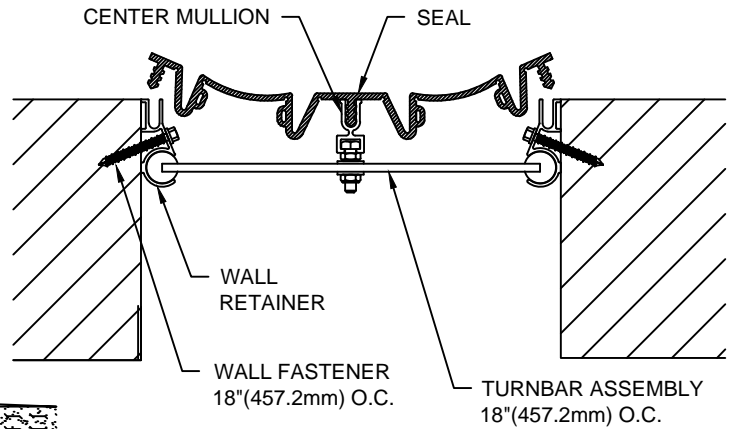
Note: Do not tighten nuts until all Turnbars have been matched to a bolt on the Center Mullion.

STEP 3

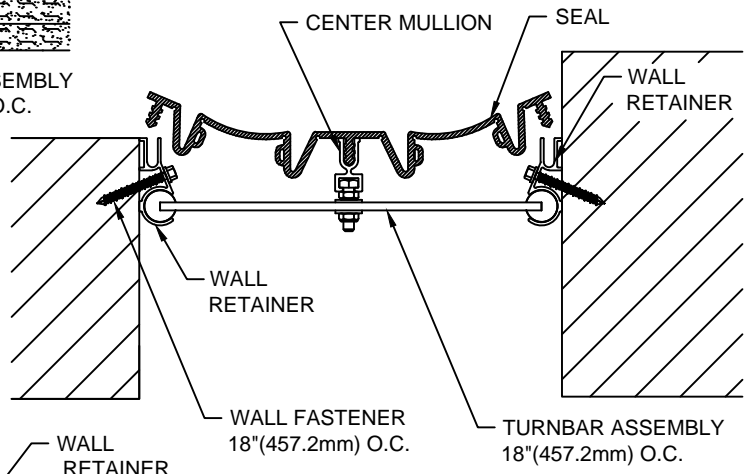
SEAL INSTALLATION



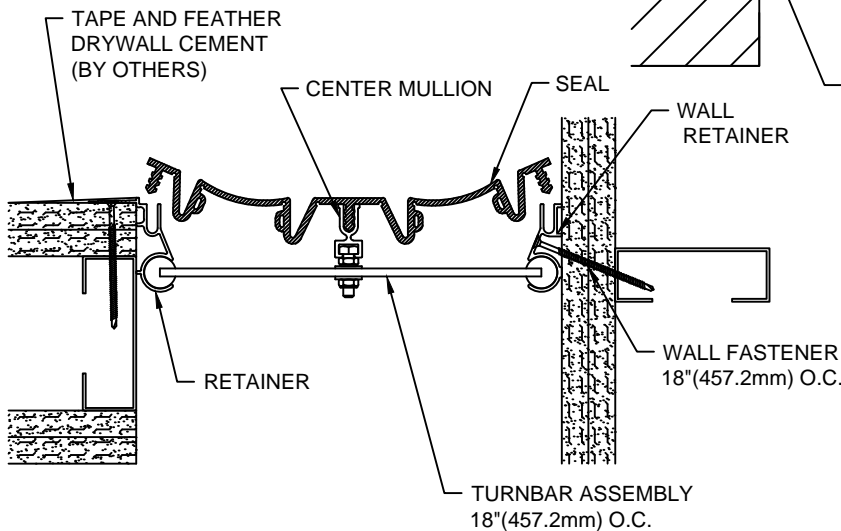
MODEL-FWF



MODEL-FWF-M



MODEL-FWFC-M



MODEL-FWFC

Step 3:

3.1) Cut a length of Seal as needed for the run. (See Step 5 for Cutting and Splicing Instructions.) Starting at the top of the run, insert the seal into the Center Mullion receiver slot and then into the side Retainers. Note: Support the Center Mullion by hand when inserting the Seal. Do not press directly against the Turnbars.

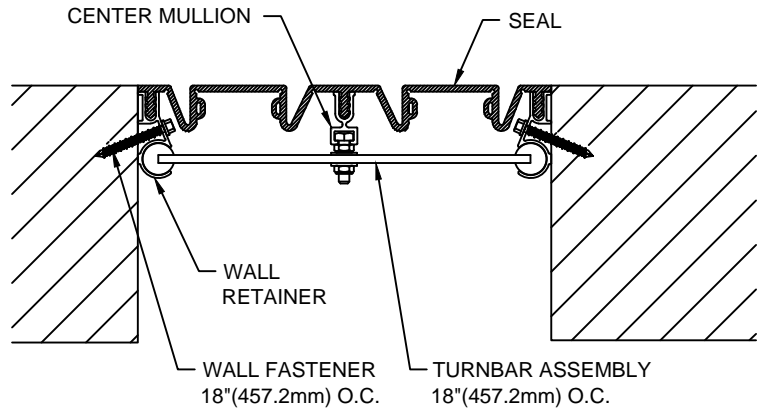
Note: In most cases hand pressure will be sufficient to seat the Seal in the Retainer. If necessary, you may use a rubber mallet and a wood block to gently seat the Seal flush with the surface of the Retainer.

Tip: If you spray the push in arrow with soapy water, the Seal slides in much easier.

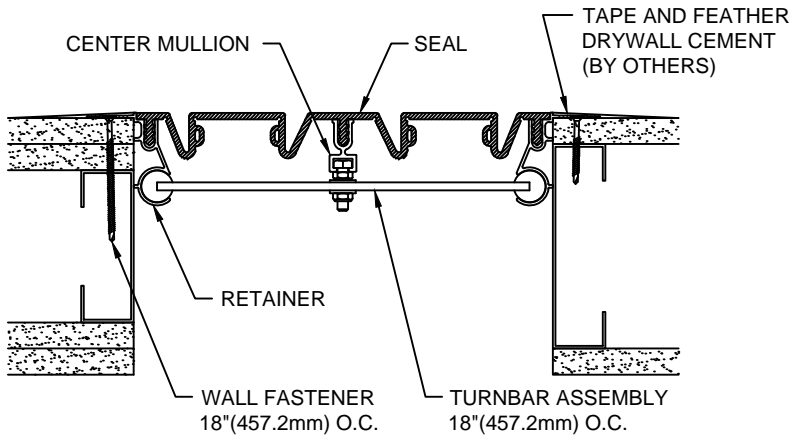
3.2) For drywall installations: Tape the edges of the Retainer and feather drywall cement to provide a smooth transition to the drywall.

STEP 4

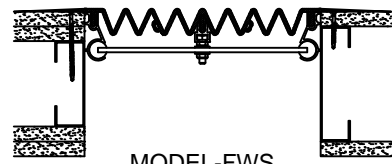
COMPLETE INSTALLATION



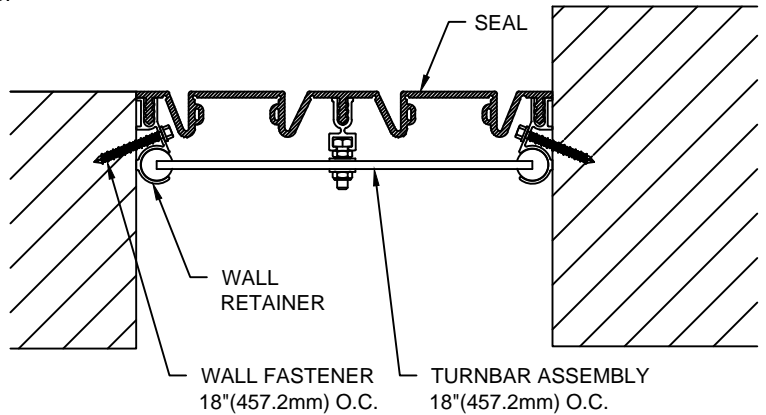
MODEL-FWF-M



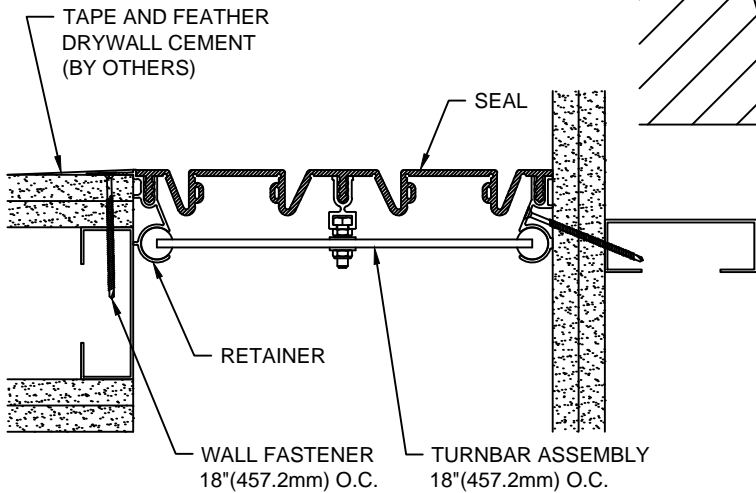
MODEL-FWF



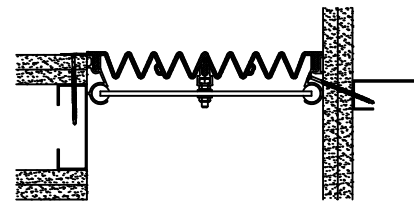
MODEL-FWS



MODEL-FWFC-M



MODEL-FWFC



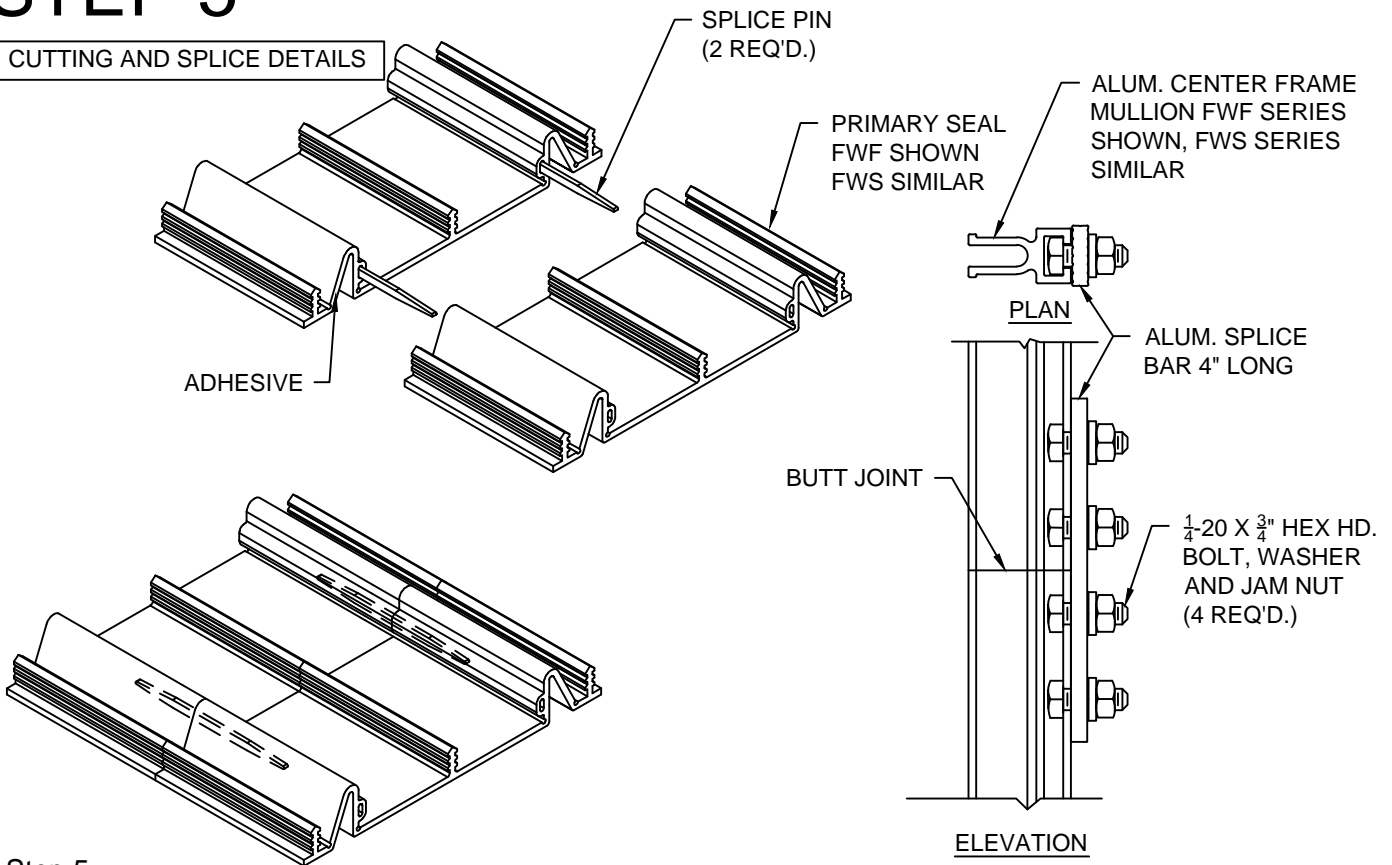
MODEL-FWSC

Step 4:

- 4.1) When installation of the C/S Wall Expansion Joint Cover has been completed, remove all residue and foreign matter from the area and joint cover.
- 4.2) Clean the C/S Joint Cover and adjoining surfaces with proper cleaner.
- 4.3) Protect the Joint Cover until the Architect's final inspection.

STEP 5

CUTTING AND SPLICE DETAILS



Step 5: CUTTING

PRIMARY SEAL SPLICE

CENTER MULLION SPLICE

- 5.1) Determine the length of seal required for the applicable area and measure and mark the seal.
- 5.2) Place the seal with the location to be cut into a miter box and flood the gasket area to be cut with water to lubricate the hacksaw blade.
- 5.3) Using a hacksaw and the C/S supplied serrated hacksaw blade, make the cut using long strokes while applying downward force when cutting. The cut should be made with as few strokes as possible in order to prevent a ragged end on the seal.

SPLICING

- 5.4) Wipe surface of the Splice Pins and the ends of the seals to be bonded with alcohol (or similar) to remove all dirt, moisture, and oils that might affect the bond.
- 5.5) When appropriate, apply the "Super Glue" adhesive (Not Supplied) to half of each Splice Pin. Insert only the portion of the pin with adhesive into the splice pin slot of one of the seals. **IMPORTANT: PLEASE OBSERVE THE SAFETY PRECAUTIONS ON THE ADHESIVE CONTAINER!**
- 5.6) Apply the "Super Glue" adhesive (Not Supplied) to the entire cut surface of the Seal and the remaining portion of the Splice Pin.
- 5.7) Align the two ends of each Seal, insert the Splice Pin into the opposite seal and bring the ends of the seal together. Apply pressure against the ends of the seals until the adhesive has set.

CENTER MULLION SPLICE:

- 5.8) Place (4) 1/4-20 x 3/4" hex bolts through the 4" long splice bar. loosely place a 1" flat washer and jam nut onto each bolt.
- 5.9) Insert the heads of two bolts into the top end of one center mullion and the other two bolts into the bottom of the adjacent center mullion.
- 5.10) Butt the end of the center mullions together and tighten the nuts.