

P-OWM HANDRAIL
WITH INTERNATIONAL OFFSET

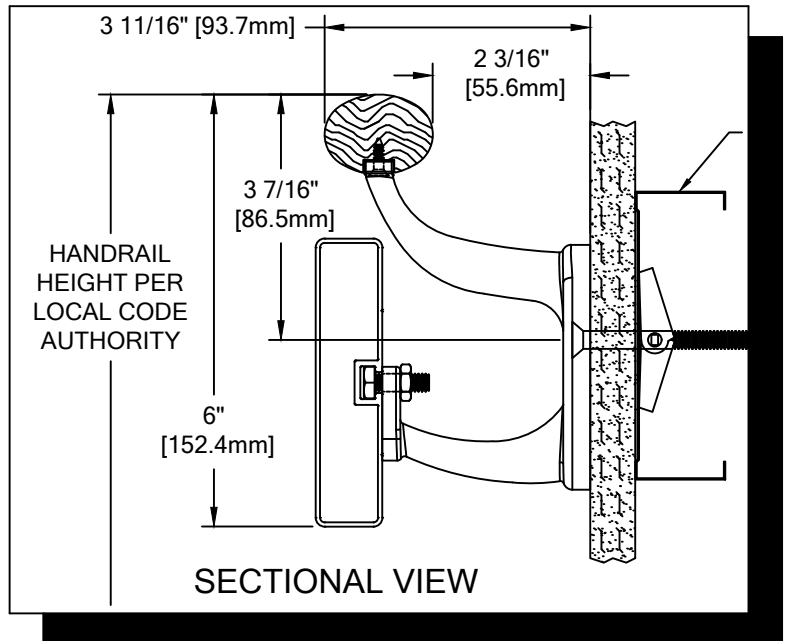
PLEASE READ

PLEASE READ THESE INSTRUCTIONS THOROUGHLY PRIOR TO BEGINNING THE P-OWM-INT HANDRAIL INSTALLATION!

THIS INSTRUCTION SHEET IS INTENDED TO PROVIDE A SPECIFIC GUIDE TO FOLLOW FOR THE INSTALLATION OF THIS P-OWM-INT HANDRAIL. CONTAINED WITHIN IS THE TECHNICAL INFORMATION AND INSTALLATION TECHNIQUES REQUIRED TO COMPLETE AN EFFICIENT, NEAT AND LONG-LASTING INSTALLATION.

INSPECT ALL MATERIALS FOR DAMAGE OR MISSING PARTS. IF YOU DISCOVER DAMAGED OR MISSING MATERIALS, IN THE USA PLEASE NOTIFY THE FACTORY AT (800) 233-8493, AND IN CANADA (888) 895-8955 FOR CUSTOMER SERVICE.

P-OWM-INT HANDRAIL MUST BE INSTALLED IN ACCORDANCE WITH THESE INSTRUCTIONS! FAILURE TO FOLLOW THESE INSTRUCTIONS MAY VOID ANY PRODUCT WARRANTIES AND RESULT IN AN UNSUCCESSFUL INSTALLATION. FOR SPECIFIC QUESTIONS REGARDING THE INSTALLATION OF THIS P-OWM-INT HANDRAIL PLEASE CALL THE FACTORY IN THE USA AT (800) 233-8493 OR EMAIL IWPTECHSUPPORT@C-SGROUP.COM. IN CANADA CALL (888) 895-8955.



IMPORTANT NOTES

1. DUE TO WOOD BEING A NATURAL PRODUCT, COMPONENTS MAY GROW AND SHRINK AT DIFFERENT RATES. BECAUSE OF THIS, CS HAS DESIGNED THIS HANDRAIL TO UTILIZE A BEVEL AS SHOWN IN THESE INSTRUCTIONS (SEE FIGURE 1). THIS BEVEL MUST BE APPLIED AT ALL WOOD JOINTS AND MUST MATCH FACTORY BEVEL ON END CAPS.
2. DUE TO THE NATURE OF WOOD, COMPONENT COLORS MAY VARY. SORT WOOD COMPONENTS AND MATCH PARTS BY COLOR.
3. ALL LINEAL MATERIAL TO BE SUPPLIED IN STOCK LENGTHS. WOOD IN 7'-0" TO 12'-0" VARIABLE, AND POWDER COATED CRASH RAIL IN 12'-0" LENGTHS. THIS MATERIAL IS TO BE FIELD CUT USING QUALITY EQUIPMENT TO INSURE THAT ALL CUTS ARE SQUARE. WHEN CUTTING MATERIAL SECTIONS, CS RECOMMENDS USING AN 80-100 TOOTH CARBIDE TIPPED SAW BLADE OR EQUIVALENT, TO MINIMIZE CHIPPING AND MAINTAIN JOINT ALIGNMENT.
4. ALL DIMENSIONS ARE TYPICAL.
5. FOR DRYWALL/PLASTER WALL CONSTRUCTION, IT IS RECOMMENDED FOR FASTENERS TO BE ENGAGED INTO METAL/WOOD STUDS TO MAINTAIN MAXIMUM PULLOUT STRENGTH. IF DURING INSTALLATION YOU ENCOUNTER SPECIAL WALL CONDITIONS THAT DO NOT ALLOW FOR DIRECT ATTACHMENT TO THE STUDS PLEASE CONSULT THE LOCAL AUTHORITY HAVING JURISDICTION.
6. INSTALL OUTSIDE CORNERS FIRST.
7. INSTALL LONGEST RUN OF HANDRAIL FIRST.
8. HANDRAIL AND CRASH RAIL SPLICES SHOULD NOT EXCEED 3" [76.2mm] DISTANCE FROM A BRACKET.
9. MATERIAL MUST REACH 65°F MIN. TO 75°F MAX. 24 HOURS PRIOR TO INSTALLATION. THIS IS ESSENTIAL TO MINIMIZE EXPANSION AND CONTRACTION OF MATERIAL.
10. MAY REQUIRE USE OF FIRE PUTTY WHEN INSTALLED ON FIRE WALL WITH TOGGLE BOLTS. REFERENCE INSTRUCTIONS 24FIREPUTTY FOR FIRE PUTTY INSTALLATION.
11. THIS HANDRAIL REQUIRES A MINIMUM OF 2 MOUNTING BRACKETS PER UNIT. THE MINIMUM END CAP-TO-END CAP HANDRAIL LENGTH IS 13 3/4" [349.1mm].
12. FOR MORE INFORMATION ON P-OWM HANDRAIL SEE OUR WEBSITE AT www.c-sgroup.com.

**P-OWM HANDRAIL
WITH INTERNATIONAL OFFSET**

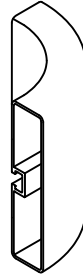
COMPONENTS & WALL FASTENERS



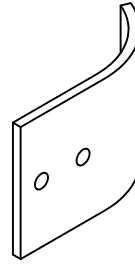
WOOD HANDRAIL
(24W240xxx)



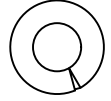
POWDER COATED
CRASH RAIL
(24A223xxx)



POWDER COATED
CRASH RAIL END CAP/
OUTSIDE CORNER
(24M067xxx)



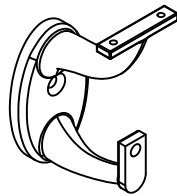
CRASH RAIL END CAP
MOUNTING PLATE
(90H181010)



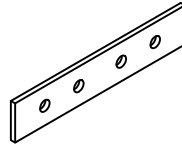
FASTENER #1
1/4" LOCK WASHER
(90H006003)



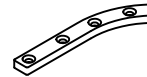
WOOD HANDRAIL ENDCAP
(24W242xxx-RH, SHOWN)
(24W241xxx-LH)
(24W243xxx-OSC)



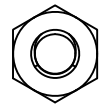
STAINLESS STEEL
MOUNTING BRACKET
(24S171000)
OPTIONAL ALUMINUM
POWDER COATED BRACKET
(24M994XXX)



CRASH RAIL
RETAINER SPLICE BAR
(24I976000)



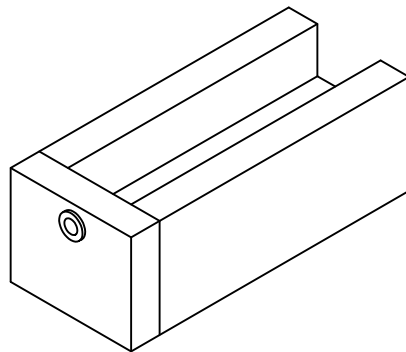
END CAP
MOUNTING PLATE
(90H142010)



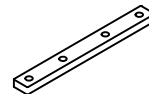
FASTENER #2
1/4-20 HEX NUT
(90H010001)



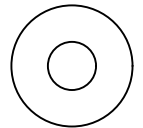
FASTENER #3
#6 X 5/8" S/S PHILLIPS
FLAT HEAD SMS
(90H231004)



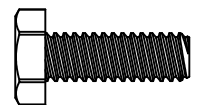
DRILL JIG
(90H113010)



HANDRAIL SPLICE
PLATE
(90H150010)



FASTENER #4
1/4" FLAT WASHER
(90H007003)

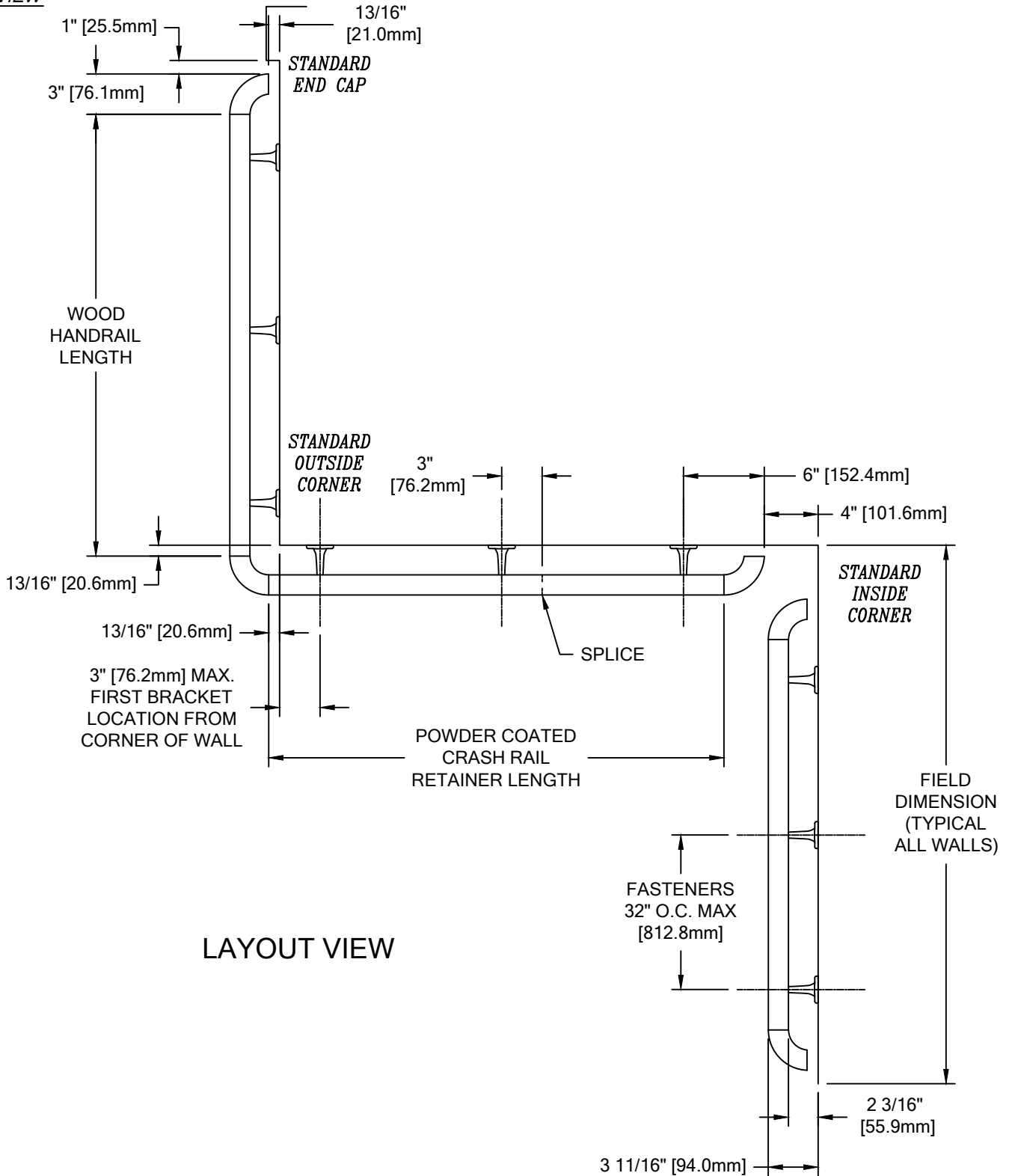


FASTENER #5
1/4-20 X 3/4"
S/S HEX HEAD
MACHINE SCREW
(90H008006)

WALL CONDITION	SPECIFIED FASTENER	DRILL DIAMETERS		CS PART NUMBER
		WALL	RETAINER	
STEEL STUD/GYPSUM WALL	1/4-20 X 3" S/S FLAT HEAD BOLT WITH TOGGLE	3/4"	N/A	90H184002
CONCRETE/CONCRETE BLOCK	1/4" X 1 3/4" S/S FLAT HEAD MASONRY ANCHOR	3/16"	N/A	90H390000
WOOD STUD/GYPSUM WALL	#14 X 3" S/S PHILLIPS FLAT HEAD WOOD SCREW	7/32"	N/A	90H538004

**P-OWM HANDRAIL
WITH INTERNATIONAL OFFSET**

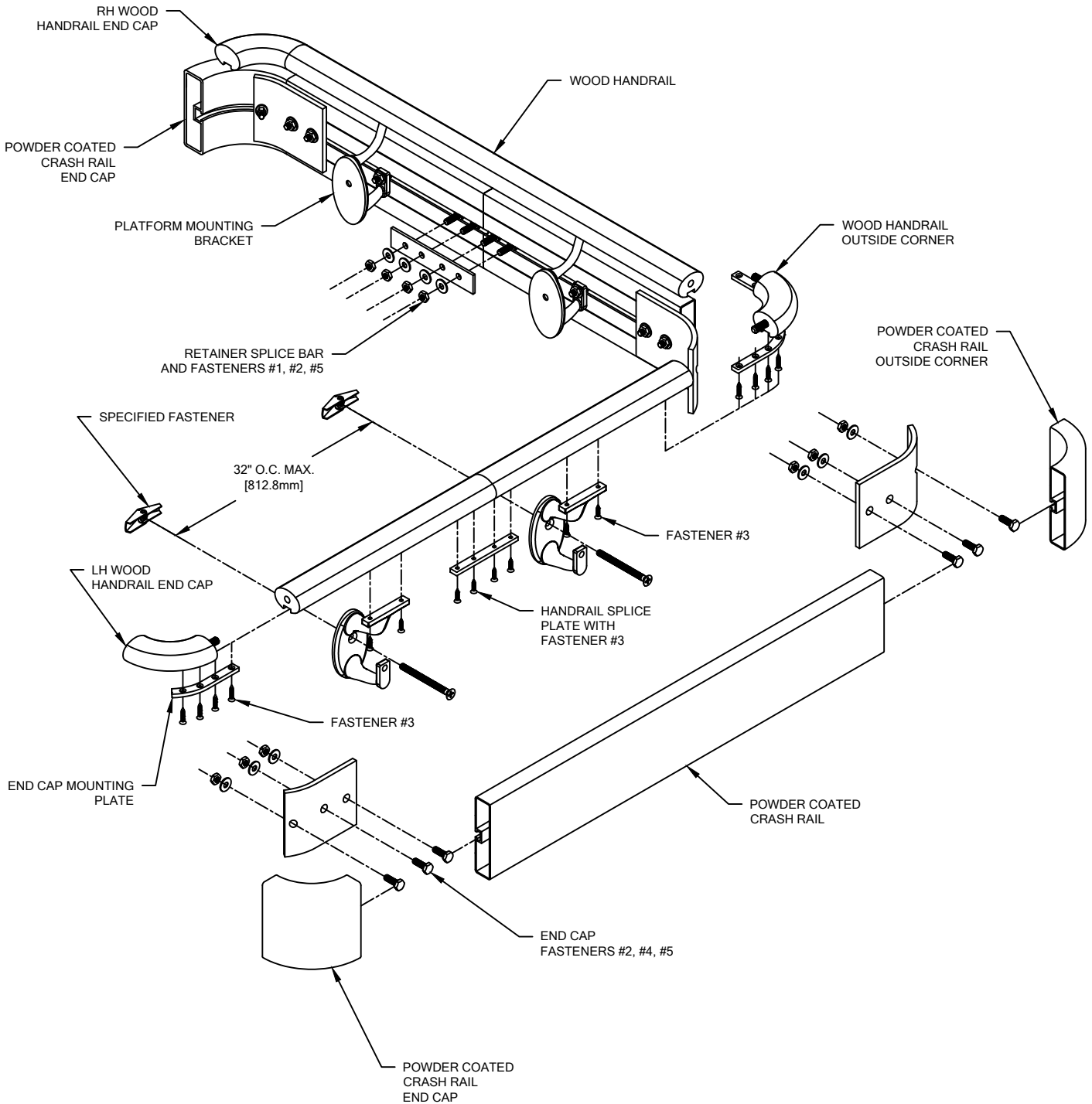
LAYOUT VIEW



LAYOUT VIEW

**P-OWM HANDRAIL
WITH INTERNATIONAL OFFSET**

TYPICAL ASSEMBLY



**P-OWM HANDRAIL
WITH INTERNATIONAL OFFSET**

TYPICAL HANDRAIL ASSEMBLY

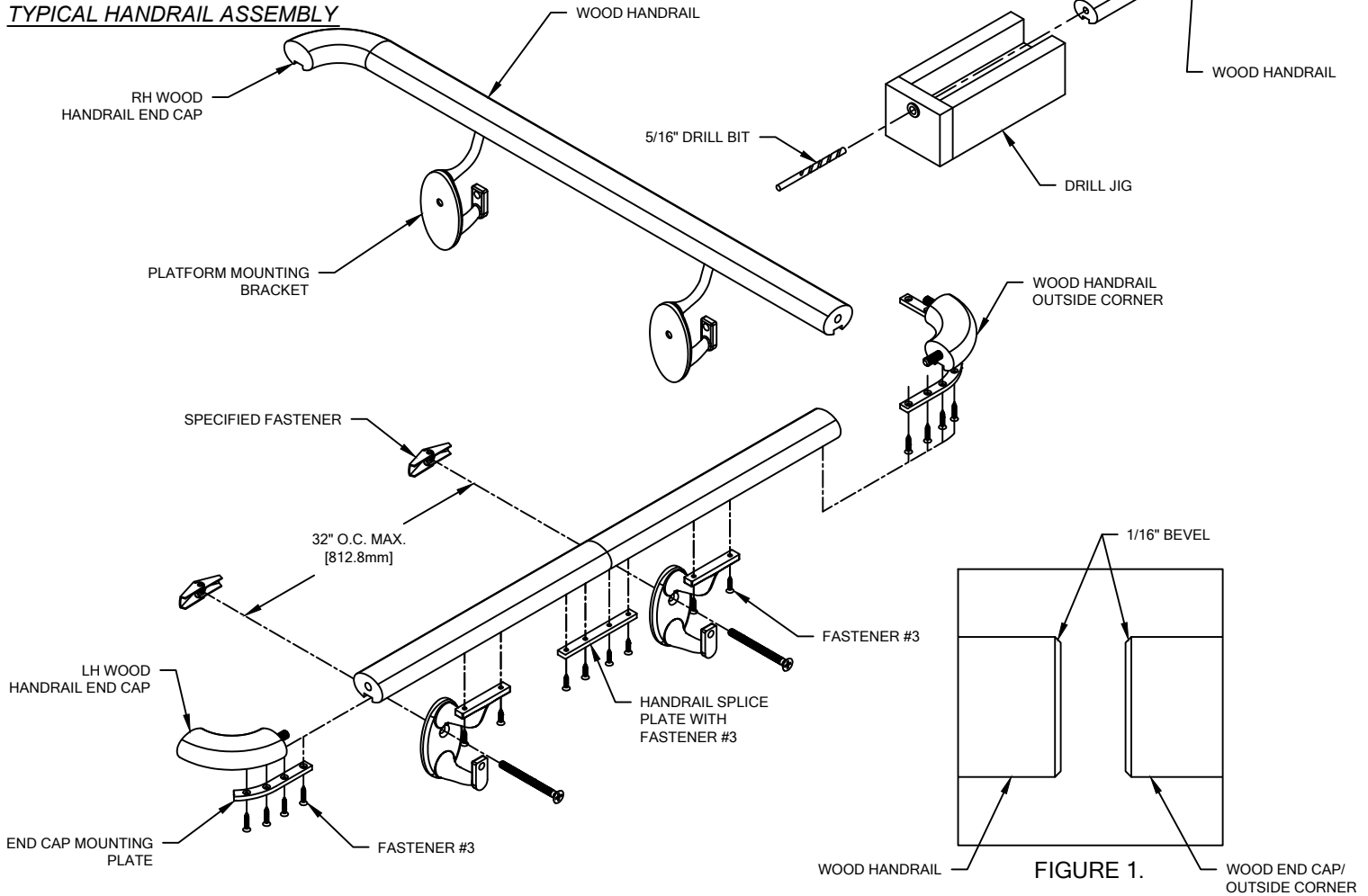


FIGURE 1.

1. USING "LOCAL CODE" REQUIREMENTS, ESTABLISH HANDRAIL HEIGHT ABOVE FINISH FLOOR. DEDUCT 3 3/8" [85.7mm] AND SNAP A CHALK LINE AT THAT HEIGHT. THIS MARKS THE LOCATION OF THE HOLE FOR THE MOUNTING BRACKET FASTENERS.
2. DRILL CLEARANCE HOLES IN WALL SURFACE FOR MOUNTING HARDWARE. REFERENCE CHART ON PAGE 2 FOR CORRECT DRILL DIAMETERS.

NOTE: SEE LAYOUT VIEW TO AID IN MOUNTING BRACKET LOCATION.

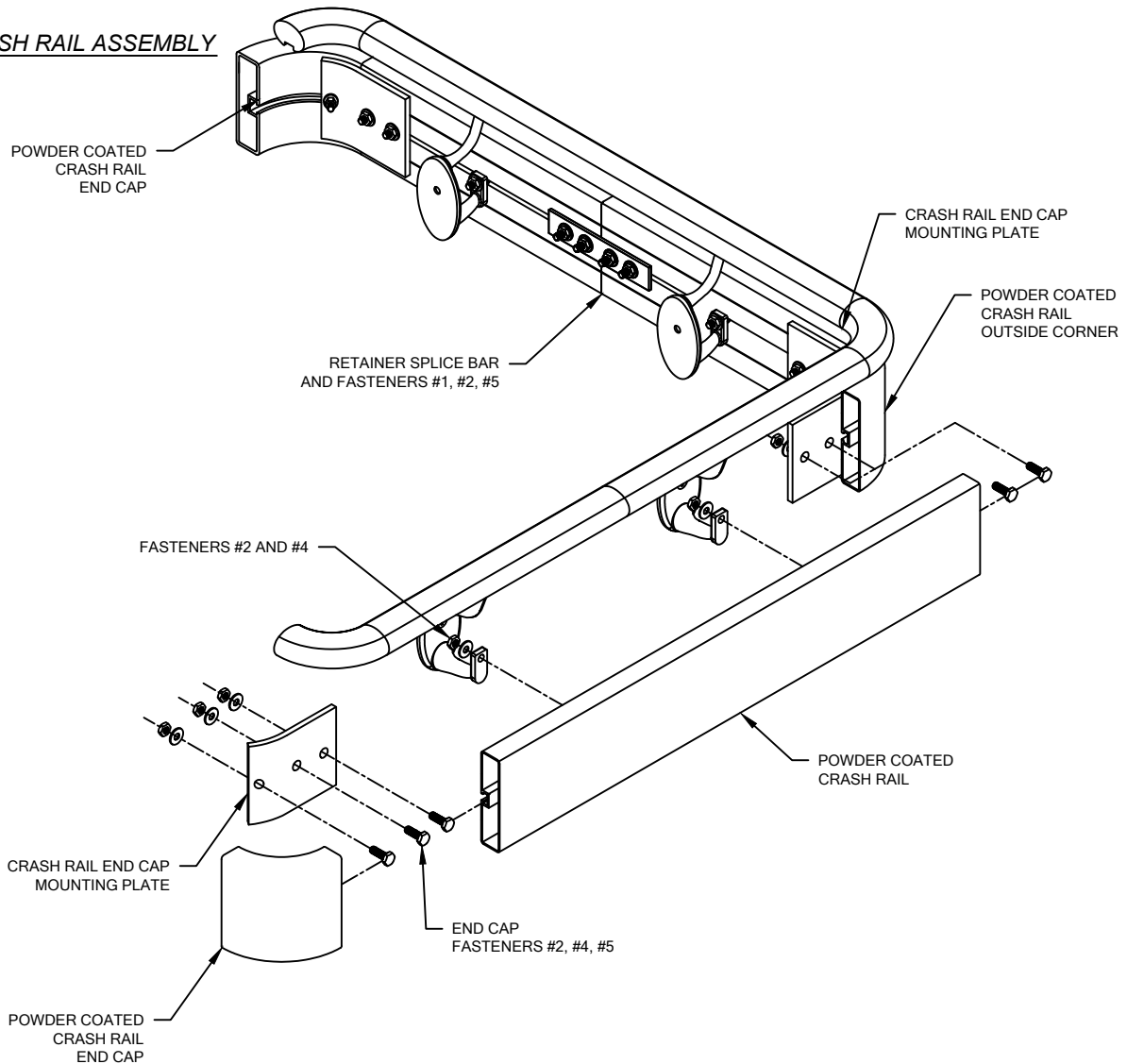
3. INSTALL MOUNTING BRACKETS USING APPROPRIATE FASTENERS. USE A LEVEL TO ENSURE THAT THE BRACKETS ARE LEVEL.
4. CUT THE WOOD HANDRAIL TO LENGTH USING THE REQUIRED DEDUCTIONS (REFERENCE LAYOUT VIEW). BEVEL THE HANDRAIL EDGES SLIGHTLY WITH 150 GRIT SANDPAPER TO MATCH THE WOOD END CAP BEVEL (SEE FIGURE 1 ABOVE). TOUCH UP SANDED EDGES WITH STAIN MARKER.

NOTE: IT IS RECOMMENDED THAT WOOD HANDRAIL BE CUT WITH AN 80-100 TOOTH CARBIDE TIPPED SAW BLADE OR EQUIVALENT.

5. TO ENSURE PROPER ALIGNMENT OF HANDRAIL TO END CAP, USE THE END CAP DRILL JIG TO DRILL A HOLE FOR DOWEL PIN IN EACH END OF THE HANDRAIL. SEE ILLUSTRATION ABOVE.
 - LOCATE HANDRAIL TIGHT AGAINST DRILL JIG'S BOTTOM DRILL BUSHING.
 - DRILL 5/16" PILOT HOLE, 7/8" DEEP, IN EACH END OF THE HANDRAIL.
 - CONTINUALLY CLEAN OUT WOOD CHIPS AS THE PILOT HOLE IS BEING DRILLED.
6. ATTACH WOOD END CAPS TO WOOD HANDRAIL BY SLIDING THE END CAP DOWEL INTO THE ALIGNMENT HOLE IN THE HANDRAIL. BEFORE APPLYING WOOD GLUE, DRY FIT COMPONENTS TOGETHER TO DOUBLE CHECK FIT. APPLY WOOD GLUE INTO THE HOLE AND HANDRAIL SURFACE PRIOR TO END CAP INSERTION. TITEBOND WOOD GLUE IS RECOMMENDED FOR THIS APPLICATION. WIPE OFF ANY EXCESS GLUE.
7. ATTACH AN END CAP MOUNTING PLATE TO THE BOTTOM OF THE HANDRAIL AT THE END CAPS. USE THE MOUNTING PLATE AS A TEMPLATE TO DRILL 1/16" PILOT HOLES INTO THE WOOD. FASTEN THE MOUNTING PLATE TO THE HANDRAIL AND END CAP/OUTSIDE CORNER WITH FOUR #6 X 5/8" S/S PHILLIPS FLAT HEAD SHEET METAL SCREWS.
8. DRILL 1/16" PILOT HOLES INTO THE WOOD HANDRAIL FOR MOUNTING BRACKET ATTACHMENT. MOUNTING BRACKETS ARE TO BE LOCATED 3" [76.2mm] FROM EACH END OF THE WOOD HANDRAIL AND 32" [812.6mm] ON CENTER ALONG LENGTH, AS REQUIRED.
9. FASTEN THE WOOD HANDRAIL TO THE WALL BRACKETS IN SUCCESSION BY INSERTING TWO #6 X 5/8" S/S PHILLIPS FLAT HEAD SHEET METAL SCREWS THROUGH THE UNDERSIDE OF THE BRACKET INTO THE WOOD HANDRAIL. CAUTION: OVER-TORQUEING MAY CAUSE THE FASTENERS TO STRIP.

**P-OWM HANDRAIL
WITH INTERNATIONAL OFFSET**

TYPICAL CRASH RAIL ASSEMBLY



10. CUT THE CONTINUOUS POWDER COATED CRASH RAIL TO LENGTH USING THE REQUIRED DEDUCTIONS. (REFERENCE LAYOUT VIEW).

NOTE: IT IS RECOMMENDED THAT CONTINUOUS POWDER COATED CRASH RAIL BE CUT WITH AN 80-100 TOOTH CARBIDE TIPPED SAW BLADE OR EQUIVALENT.

11. ATTACH POWDER COATED CRASH RAIL END CAPS AND OUTSIDE CORNERS:
- SLIDE 1/4-20 X 3/4" HEX HEAD BOLTS IN THE RECEIVER SLOTS OF THE CRASH RAIL RETAINER FOR ALL WALL BRACKETS.
 - PARTIALLY FASTEN 1/4-20 X 3/4" HEX HEAD BOLTS ONTO MOUNTING PLATE (NOTE THE ORIENTATION IN DRAWING ABOVE)
 - SLIDE HEAD OF BOLTS INTO GROOVES OF THE CRASH RAIL AND END CAP.
 - ALIGN CRASH RAIL WITH END CAP SO THEY ARE FLUSH TOGETHER.
 - SECURELY TIGHTEN ALL FASTENERS
12. ATTACH POWDER COATED CRASH RAIL TO THE WALL BRACKETS:
- ALIGN THE HEX HEAD BOLT WITH MOUNTING BRACKETS.
 - INSERT HEX HEAD BOLT INTO THE MOUNTING BRACKET HOLE.
 - PLACE A 1/4" FLAT WASHER AND 1/4-20 HEX NUT ONTO THE HEX HEAD BOLT.
 - TIGHTEN AS REQUIRED.

3/31/17