

## Acrovyn® Brushed Metals



From left: Brushed Pewter and Brushed Graphite

Get the appearance of authentic metal without the price tag. Acrovyn Brushed Metals are perfect for spaces where the durability and cleanability of Acrovyn are required and a lustrous brushed metal finish is desired. Additionally, they're now available with Up to 50% post-consumer recycled content. Select from two different metals to complement feature walls, entries, lobbies, and more.

*For more information, visit [www.c-sgroup.com/category/wall-protection/product-selector/wall-coverings-and-panels](http://www.c-sgroup.com/category/wall-protection/product-selector/wall-coverings-and-panels).  
Post-consumer recycled content available on sheet products only.*



# Acrovyn® Brushed Metals



1744 Brushed Pewter



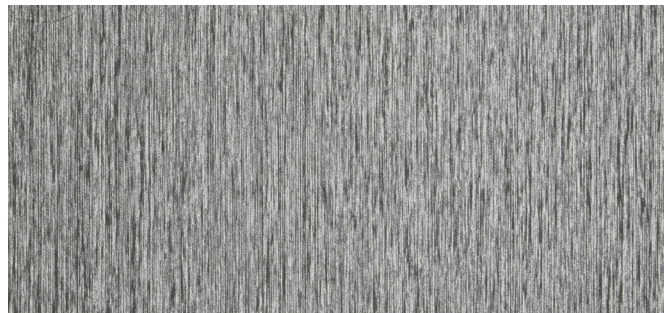
1745 Brushed Graphite

## Retiring December 2025



410 Brushed Silver

Alternate: 1744 Brushed Pewter



378 Brushed Nickel

Alternate: 1744 Brushed Pewter

## Product Availability (○ Available in Post-Consumer Recycled Content)

	SHEET*	OPTIONAL SHEET TEXTURES	OPTIONAL SHEET MICRTEXTURES	WALL PANELS	DOORS	DOOR EDGES	CORNER GUARDS	HANDRAILS	CRASH RAILS	DIMENSIONAL MOLDINGS
1744 Brushed Pewter	○	○	○	○	○	●				○
1745 Brushed Graphite	○	○	○	○	○	●				○
410 Brushed Silver	○	○	○	○	○	●	●	●	●	○
378 Brushed Nickel	○	○	○	○	○	●	●	●	●	○

\*Suede is standard sheet texture.

Due to differences in monitor resolutions, colors shown may vary. Please request samples prior to specifying.