

# PTC & PTCW

## 100% Movement Models

### TECHNICAL DATA:

#### Aluminum

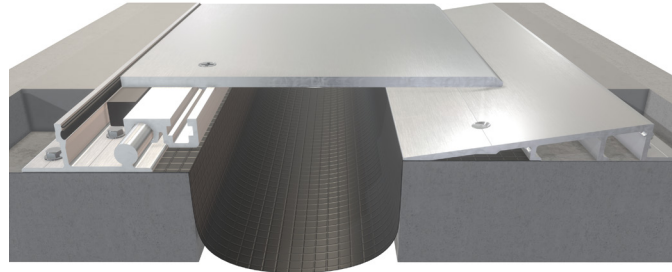
- Extrusion – CS uses multiple alloys & tempers which are established to be the most appropriate for the given use of individual parts. Will be one of the following: (6063-T5, T6, T52) (6061-T5, T6, T51) (6105-T5, T6) (6005-T5) (6005A-T5, T61), ASTM B221
- Sheet – 6061-T6, 3003 H14, 5005 H34, ASTM-B209.

#### Vapor Barrier

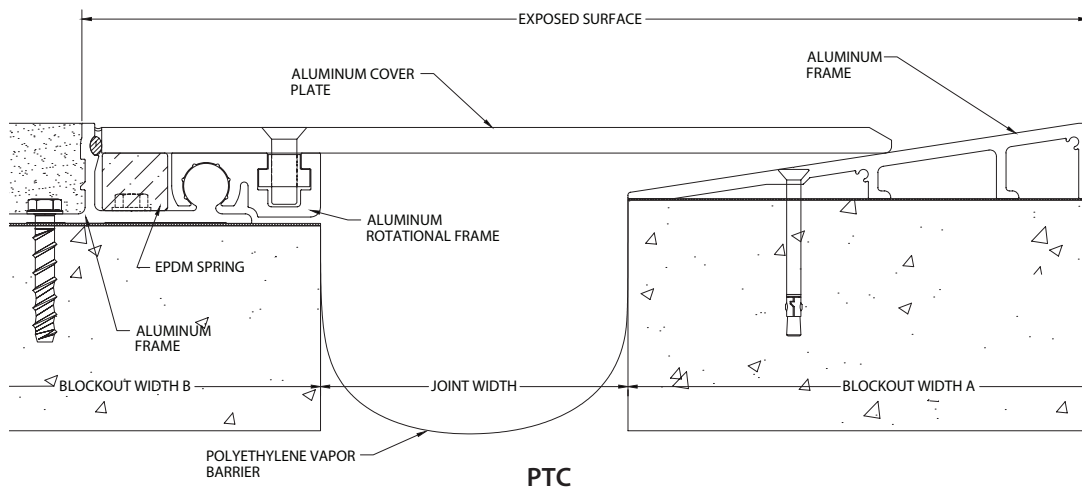
- Material: 7-Ply Polyethylene, ASTM-E-1745-11
- Color: Black
- 3" Tensile Strength: 275 lbs., ASTM-D-882
- Puncture Strength: 79 lbs., ASTM-D-4833
- PPT Resistance: 62 lbs., ASTM-D-2582

#### EPDM Spring

- Material – EPDM
- Standard vehicular loading (3,000 lb. point load per IBC 2009)



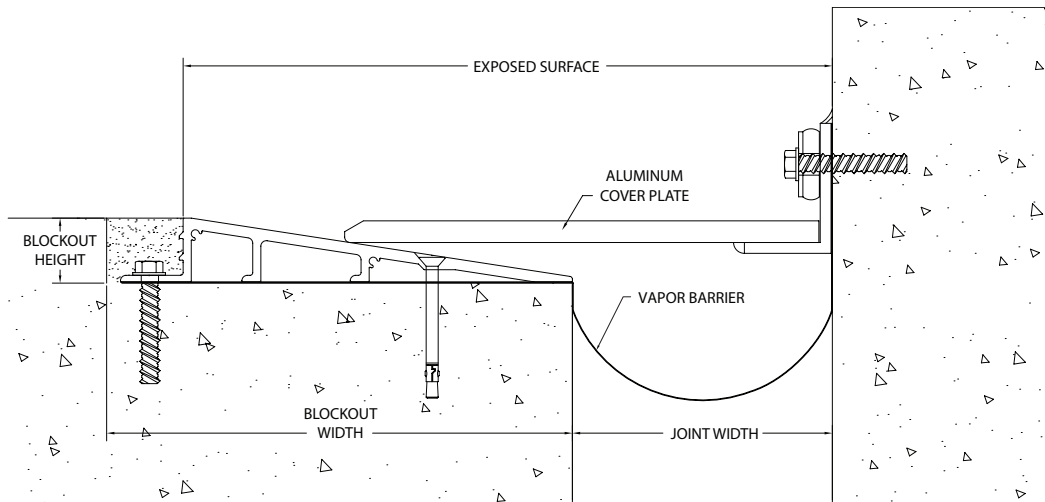
MODEL	JOINT WIDTH	MINIMUM OPENING	MAXIMUM OPENING	EXPOSED SURFACE	BLOCKOUT WIDTH "A"	BLOCKOUT HEIGHT "A"	BLOCKOUT WIDTH "B"	BLOCKOUT HEIGHT "B"
PTC-600	6.00" (152mm)	0.00" (0mm)	11.00" (279mm)	19.63" (499mm)	10.75" (273mm)	1.50" (38mm)	7.75" (197mm)	2.00" (51mm)
PTC-700	7.00" (178mm)	0.00" (0mm)	12.00" (305mm)	20.63" (524mm)	10.75" (273mm)	1.50" (38mm)	7.75" (197mm)	2.00" (51mm)
PTC-800	8.00" (203mm)	0.00" (0mm)	13.00" (330mm)	21.63" (549mm)	10.75" (273mm)	1.50" (38mm)	7.75" (197mm)	2.00" (51mm)
PTC-900	9.00" (229mm)	0.00" (0mm)	14.00" (356mm)	22.63" (575mm)	10.75" (273mm)	1.50" (38mm)	7.75" (197mm)	2.00" (51mm)
PTC-1000	10.00" (254mm)	0.00" (0mm)	16.00" (406mm)	24.63" (626mm)	11.75" (298mm)	1.50" (38mm)	7.75" (197mm)	2.00" (51mm)
PTC-1100	11.00" (279mm)	0.00" (0mm)	17.00" (432mm)	25.88" (657mm)	12.00" (305mm)	1.50" (38mm)	7.75" (197mm)	2.00" (51mm)
PTC-1200	12.00" (305mm)	0.00" (0mm)	18.50" (470mm)	27.63" (702mm)	12.50" (318mm)	1.50" (38mm)	7.75" (197mm)	2.00" (51mm)
PTC-1300	13.00" (330mm)	0.00" (0mm)	20.00" (508mm)	28.88" (734mm)	13.00" (330mm)	1.50" (38mm)	7.75" (197mm)	2.25" (57mm)
PTC-1400	14.00" (356mm)	0.00" (0mm)	21.50" (546mm)	30.63" (778mm)	13.50" (343mm)	1.50" (38mm)	7.75" (197mm)	2.25" (57mm)
PTC-1500	15.00" (381mm)	0.00" (0mm)	23.00" (584mm)	31.88" (810mm)	14.00" (356mm)	1.50" (38mm)	7.75" (197mm)	2.25" (57mm)
PTC-1600	16.00" (406mm)	0.00" (0mm)	24.50" (622mm)	33.63" (854mm)	14.50" (368mm)	1.50" (38mm)	7.75" (197mm)	2.25" (57mm)



# PTC & PTCW

## 100% Movement Models

MODEL	JOINT WIDTH	MINIMUM OPENING	MAXIMUM OPENING	EXPOSED SURFACE	BLOCKOUT WIDTH	BLOCKOUT HEIGHT
PTCW-600	6.00" (152mm)	0.00" (0mm)	11.00" (279mm)	15.00" (381mm)	10.75" (273mm)	1.50" (38mm)
PTCW-700	7.00" (178mm)	0.00" (0mm)	12.00" (305mm)	16.00" (406mm)	10.75" (273mm)	1.50" (38mm)
PTCW-800	8.00" (203mm)	0.00" (0mm)	13.00" (330mm)	17.00" (432mm)	10.75" (273mm)	1.50" (38mm)
PTCW-900	9.00" (229mm)	0.00" (0mm)	14.00" (356mm)	18.00" (457mm)	10.75" (273mm)	1.50" (38mm)
PTCW-1000	10.00" (254mm)	0.00" (0mm)	16.00" (406mm)	20.00" (508mm)	11.75" (298mm)	1.50" (38mm)
PTCW-1100	11.00" (279mm)	0.00" (0mm)	17.00" (432mm)	21.25" (540mm)	12.00" (305mm)	1.50" (38mm)
PTCW-1200	12.00" (305mm)	0.00" (0mm)	19.00" (483mm)	22.75" (578mm)	12.50" (318mm)	1.50" (38mm)
PTCW-1300	13.00" (330mm)	0.00" (0mm)	20.50" (521mm)	24.25" (616mm)	13.00" (330mm)	1.50" (38mm)
PTCW-1400	14.00" (356mm)	0.00" (0mm)	22.00" (559mm)	25.75" (654mm)	13.50" (343mm)	1.50" (38mm)
PTCW-1500	15.00" (381mm)	0.00" (0mm)	23.50" (597mm)	27.25" (692mm)	14.00" (356mm)	1.50" (38mm)
PTCW-1600	16.00" (406mm)	0.00" (0mm)	25.00" (635mm)	28.75" (730mm)	14.50" (368mm)	1.50" (38mm)

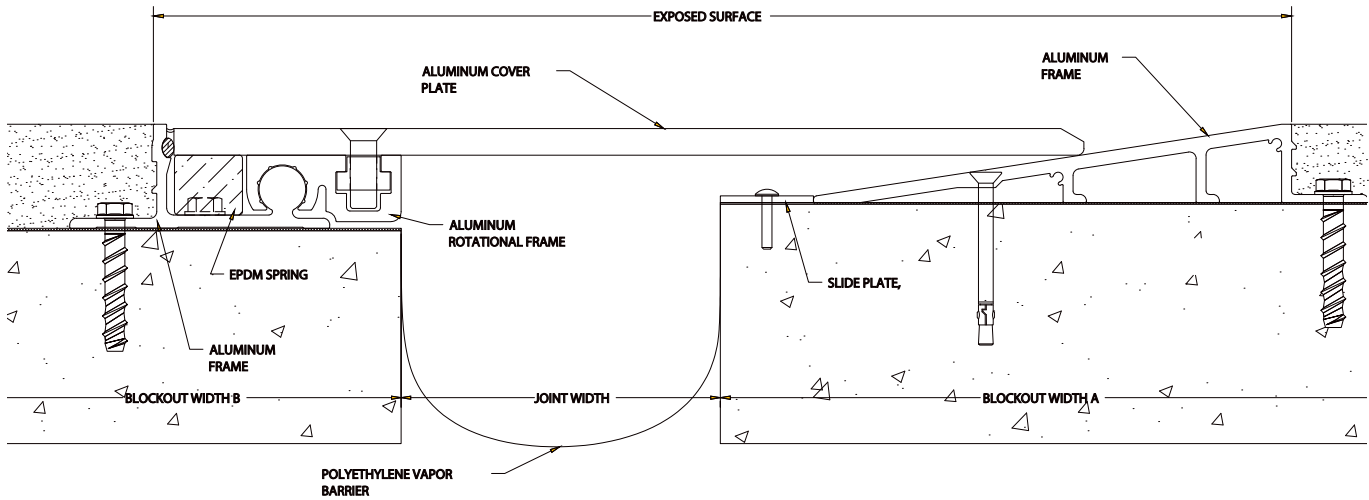


PTCW

# PTC & PTCW

## 200% Movement Models

MODEL	JOINT WIDTH	MINIMUM OPENING	MAXIMUM OPENING	EXPOSED SURFACE	BLOCKOUT WIDTH "A"	BLOCKOUT HEIGHT "A"	BLOCKOUT WIDTH "B"	BLOCKOUT HEIGHT "B"
PTC-601	6.00" (152mm)	0.00" (0mm)	12.00" (305mm)	21.38" (543mm)	12.50" (318mm)	1.50" (38mm)	7.75" (197mm)	2.00" (51mm)
PTC-701	7.00" (178mm)	0.00" (0mm)	14.00" (356mm)	23.38" (594mm)	13.50" (343mm)	1.50" (38mm)	7.75" (197mm)	2.00" (51mm)
PTC-801	8.00" (203mm)	0.00" (0mm)	16.00" (406mm)	25.38" (645mm)	14.50" (368mm)	1.50" (38mm)	7.75" (197mm)	2.00" (51mm)
PTC-901	9.00" (229mm)	0.00" (0mm)	18.00" (457mm)	27.38" (695mm)	15.50" (394mm)	1.50" (38mm)	7.75" (197mm)	2.00" (51mm)
PTC-1001	10.00" (254mm)	0.00" (0mm)	20.00" (508mm)	29.38" (746mm)	16.50" (419mm)	1.50" (38mm)	7.75" (197mm)	2.25" (57mm)
PTC-1101	11.00" (279mm)	0.00" (0mm)	22.00" (559mm)	31.38" (797mm)	17.50" (445mm)	1.50" (38mm)	7.75" (197mm)	2.25" (57mm)
PTC-1201	12.00" (305mm)	0.00" (0mm)	24.00" (610mm)	33.38" (848mm)	18.50" (470mm)	1.50" (38mm)	7.75" (197mm)	2.25" (57mm)
PTC-1301	13.00" (330mm)	0.00" (0mm)	26.00" (660mm)	35.38" (899mm)	19.50" (495mm)	1.50" (38mm)	7.75" (197mm)	2.25" (57mm)
PTC-1401	14.00" (356mm)	0.00" (0mm)	28.00" (711mm)	37.38" (949mm)	20.50" (521mm)	1.50" (38mm)	7.75" (197mm)	2.25" (57mm)
PTC-1501	15.00" (381mm)	0.00" (0mm)	30.00" (762mm)	39.38" (1,000mm)	21.50" (546mm)	1.50" (38mm)	7.75" (197mm)	2.25" (57mm)
PTC-1601	16.00" (406mm)	0.00" (0mm)	32.00" (813mm)	41.38" (1,051mm)	22.50" (572mm)	1.50" (38mm)	7.75" (197mm)	2.25" (57mm)

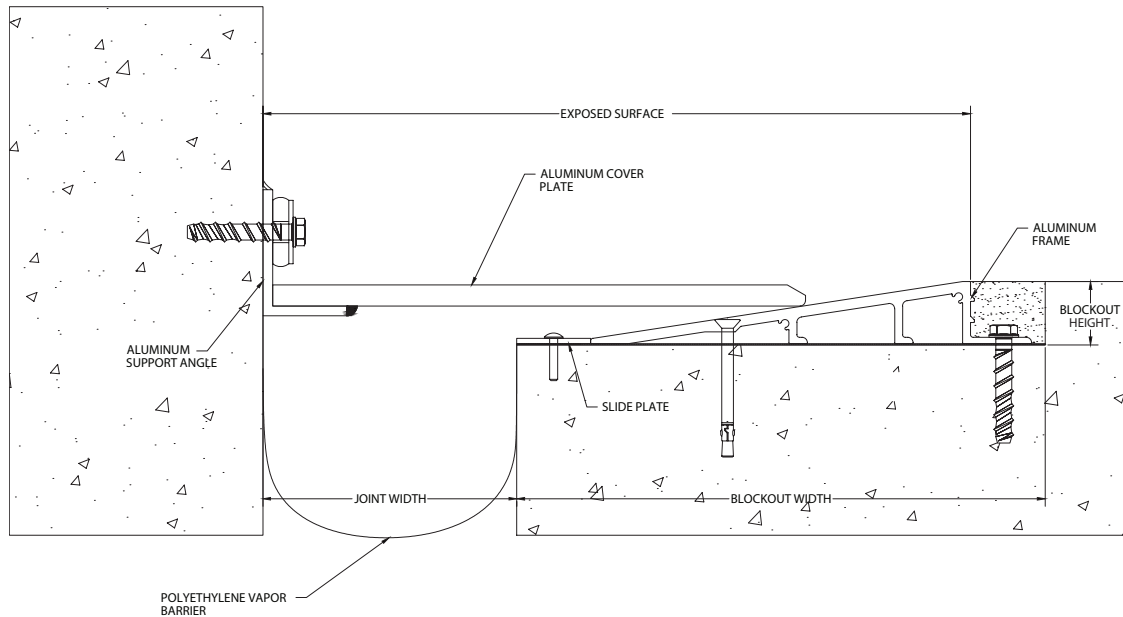


PTC 200%

# PTC & PTCW

## 200% Movement Models

MODEL	JOINT WIDTH	MINIMUM OPENING	MAXIMUM OPENING	EXPOSED SURFACE	BLOCKOUT WIDTH	BLOCKOUT HEIGHT
PTCW-601	6.00" (152mm)	0.00" (0mm)	12.00" (305mm)	16.75" (425mm)	12.75" (324mm)	1.50" (38mm)
PTCW-701	7.00" (178mm)	0.00" (0mm)	14.00" (356mm)	18.75" (476mm)	13.50" (343mm)	1.50" (38mm)
PTCW-801	8.00" (203mm)	0.00" (0mm)	16.00" (406mm)	20.75" (527mm)	14.50" (368mm)	1.50" (38mm)
PTCW-901	9.00" (229mm)	0.00" (0mm)	18.00" (457mm)	22.75" (578mm)	15.50" (394mm)	1.50" (38mm)
PTCW-1001	10.00" (254mm)	0.00" (0mm)	20.00" (508mm)	24.75" (629mm)	16.50" (419mm)	1.50" (38mm)
PTCW-1101	11.00" (279mm)	0.00" (0mm)	22.00" (559mm)	26.75" (679mm)	17.50" (445mm)	1.50" (38mm)
PTCW-1201	12.00" (305mm)	0.00" (0mm)	24.00" (610mm)	28.75" (730mm)	18.50" (470mm)	1.50" (38mm)
PTCW-1301	13.00" (330mm)	0.00" (0mm)	26.00" (660mm)	30.75" (781mm)	19.50" (495mm)	1.50" (38mm)
PTCW-1401	14.00" (356mm)	0.00" (0mm)	28.00" (711mm)	32.75" (832mm)	20.50" (521mm)	1.50" (38mm)
PTCW-1501	15.00" (381mm)	0.00" (0mm)	30.00" (762mm)	34.75" (883mm)	21.50" (546mm)	1.50" (38mm)
PTCW-1601	16.00" (406mm)	0.00" (0mm)	32.00" (813mm)	36.75" (933mm)	22.50" (572mm)	1.50" (38mm)



PTCW 200%