

FYW-D & FYWW-D

TECHNICAL DATA:

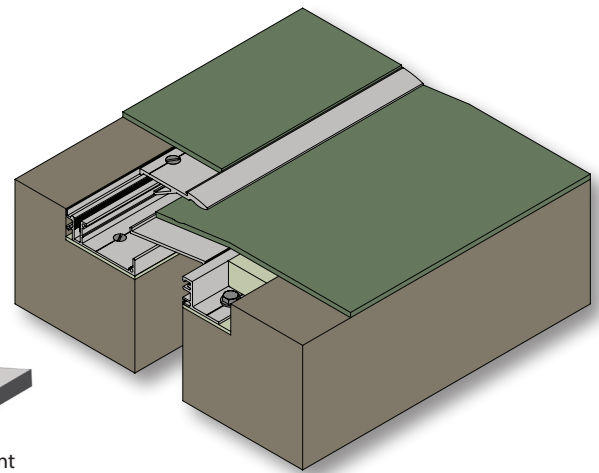
Aluminum

- Extrusion – CS uses multiple alloys & tempers which are established to be the most appropriate for the given use of individual parts. Will be one of the following: (6063-T5, T6, T52) (6061-T5, T6, T51) (6105-T5, T6) (6005-T5) (6005A-T5, T61), ASTM B221

Standard Loading

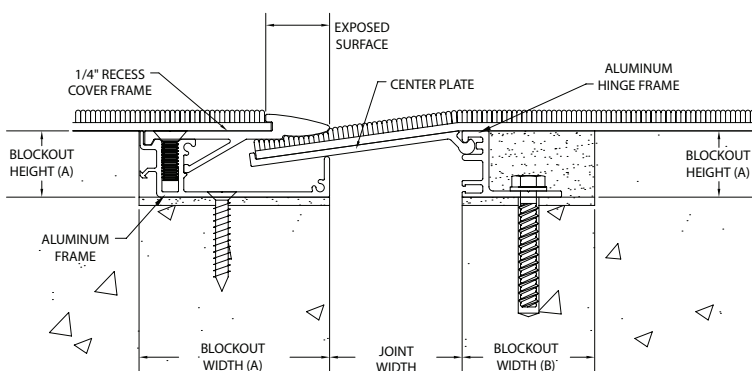
- 500 lbs.

Note: Cover offers a 1/4" recess to allow for carpet finishes

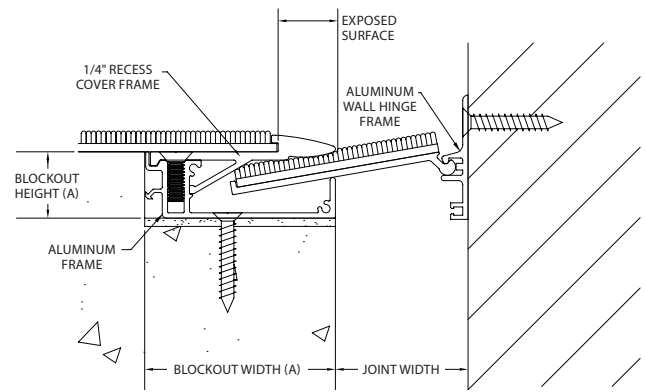


Capable of Lateral Movement

MODEL	JOINT WIDTH	MINIMUM OPENING	MAXIMUM OPENING	EXPOSED SURFACE	BLOCKOUT WIDTH "A"	BLOCKOUT HEIGHT	BLOCKOUT WIDTH "B"
FYW-100D	1.00" (25mm)	0.00" (0mm)	2.13" (54mm)	0.96" (24mm)	3.88" (99mm)	1.00" (25mm)	2.00" (51mm)
FYW-200D	2.00" (51mm)	1.00" (25mm)	3.13" (80mm)	0.96" (24mm)	2.88" (73mm)	1.00" (25mm)	2.00" (51mm)
FYW-300D	3.00" (76mm)	1.00" (25mm)	5.13" (130mm)	0.96" (24mm)	6.13" (156mm)	1.00" (25mm)	2.00" (51mm)
FYW-400D	4.00" (102mm)	2.00" (51mm)	6.13" (156mm)	0.96" (24mm)	5.13" (130mm)	1.00" (25mm)	2.00" (51mm)
FYWW-100D	1.00" (25mm)	0.38" (10mm)	2.38" (60mm)	0.96" (24mm)	3.88" (99mm)	1.00" (25mm)	N/A
FYWW-200D	2.00" (51mm)	1.38" (35mm)	3.38" (86mm)	0.96" (24mm)	2.88" (73mm)	1.00" (25mm)	N/A
FYWW-300D	3.00" (76mm)	1.38" (35mm)	5.50" (140mm)	0.96" (24mm)	6.13" (156mm)	1.00" (25mm)	N/A
FYWW-400D	4.00" (102mm)	2.38" (60mm)	6.50" (165mm)	0.96" (24mm)	5.13" (130mm)	1.00" (25mm)	N/A



FYW-D



FYWW-D