

AW-LR HANDRAIL

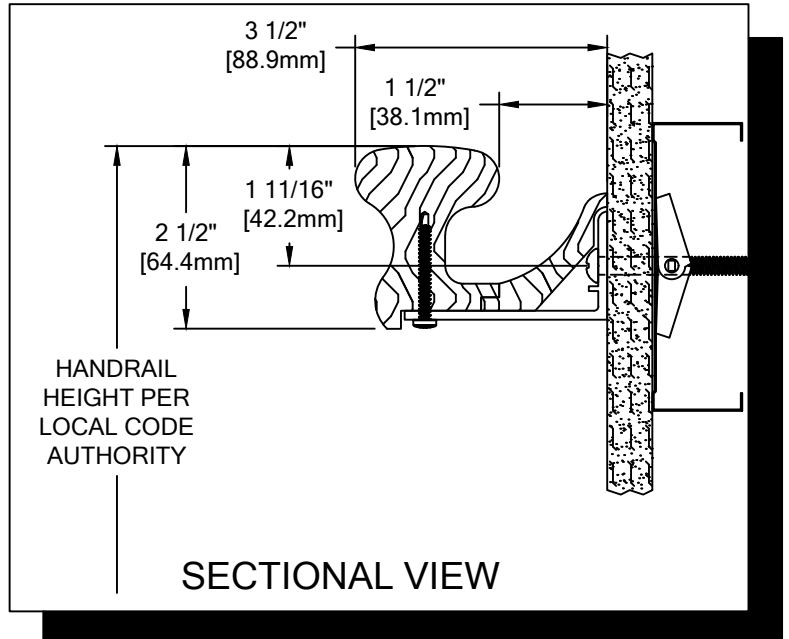
PLEASE READ

PLEASE READ THESE INSTRUCTIONS THOROUGHLY PRIOR TO BEGINNING THE AW-LR HANDRAIL INSTALLATION!

THIS INSTRUCTION SHEET IS INTENDED TO PROVIDE A SPECIFIC GUIDE TO FOLLOW FOR THE INSTALLATION OF THIS AW-LR HANDRAIL. CONTAINED WITHIN IS THE TECHNICAL INFORMATION AND INSTALLATION TECHNIQUES REQUIRED TO COMPLETE AN EFFICIENT, NEAT AND LONG-LASTING INSTALLATION.

INSPECT ALL MATERIALS FOR DAMAGE OR MISSING PARTS. IF YOU DISCOVER DAMAGED OR MISSING MATERIALS, IN THE USA PLEASE NOTIFY THE FACTORY AT (800) 233-8493, AND IN CANADA (888) 895-8955 FOR CUSTOMER SERVICE.

AW-LR HANDRAIL MUST BE INSTALLED IN ACCORDANCE WITH THESE INSTRUCTIONS! FAILURE TO FOLLOW THESE INSTRUCTIONS MAY VOID ANY PRODUCT WARRANTIES AND RESULT IN AN UNSUCCESSFUL INSTALLATION. FOR SPECIFIC QUESTIONS REGARDING THE INSTALLATION OF THIS AW-LR HANDRAIL PLEASE CALL THE FACTORY IN THE USA AT (800) 233-8493 OR EMAIL IWPTECHSUPPORT@C-SGROUP.COM. IN CANADA CALL (888) 895-8955 .

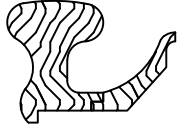


IMPORTANT NOTES

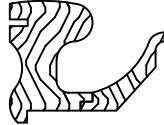
1. ALL MATERIAL TO BE SHIPPED CUT TO SIZE PER CUSTOMER ADVISED, FIELD VERIFIED DIMENSIONS.
2. ALL DIMENSIONS ARE TYPICAL.
3. FOR DRYWALL/PLASTER WALL CONSTRUCTION, IT IS RECOMMENDED FOR FASTENERS TO BE ENGAGED INTO METAL/WOOD STUDS TO MAINTAIN MAXIMUM PULLOUT STRENGTH. IF DURING INSTALLATION YOU ENCOUNTER SPECIAL WALL CONDITIONS THAT DO NOT ALLOW FOR DIRECT ATTACHMENT TO THE STUDS PLEASE CONSULT THE LOCAL AUTHORITY HAVING JURISDICTION.
4. MATERIAL MUST REACH 65°F MIN. TO 75°F MAX. 24 HOURS PRIOR TO INSTALLATION. THIS IS ESSENTIAL TO MINIMIZE EXPANSION AND CONTRACTION OF MATERIAL.
5. THIS HANDRAIL REQUIRES A MINIMUM OF 2 MOUNTING FASTENERS PER UNIT. THE MINIMUM END CAP-TO-END CAP HANDRAIL LENGTH IS 12" [304.8mm].
6. FOR MORE INFORMATION ON AW-LR HANDRAIL SEE OUR WEBSITE AT www.c-sgroup.com.

AW-LR HANDRAIL

COMPONENTS & FASTENERS



AW-LR WOOD
HANDRAIL ASSEMBLY
(24W648xxx)
(24W647xxx)



AW-LRVB WOOD
HANDRAIL ASSEMBLY
(24W649xxx)
(24W647xxx)



ALUMINUM RETAINER
(24A207000)



FASTENER #1
#8 X 1 1/2" PHILLIPS
PAN HEAD TEK SCREW
(90H819002)



HANDRAIL END CAP
(24W518xxx-LEFT HAND)
(24W519xxx-RIGHT HAND)

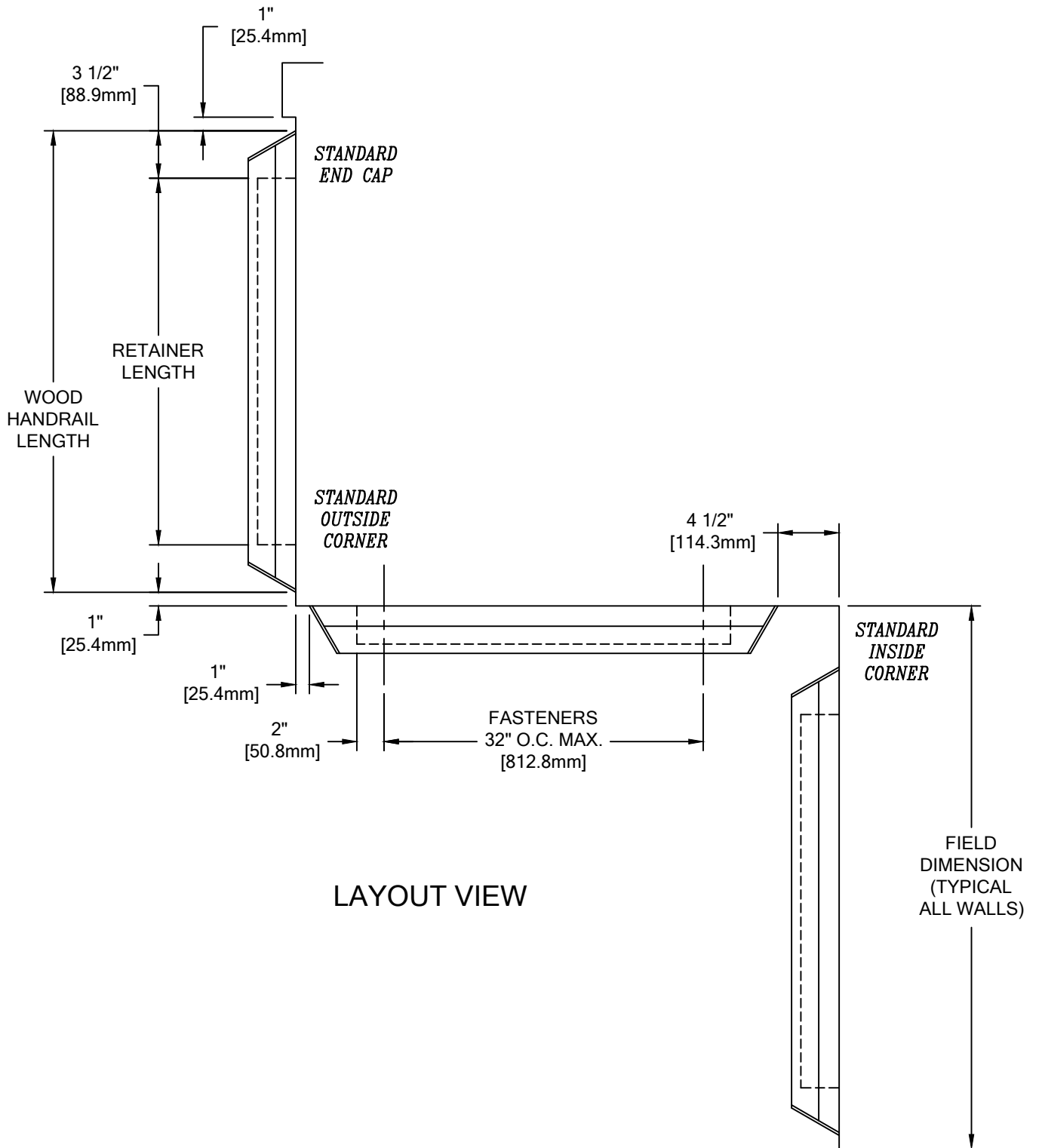


OPTIONAL FEATURE BUMPER
(24V012xxx)

WALL CONDITION	SPECIFIED FASTENER	DRILL DIAMETERS		CS PART NUMBER
		WALL	RETAINER	
STEEL STUD/GYPSUM WALL	1/4-20 X 3" ROUND HEAD TOGGLE BOLT	3/4"	9/32"	90H045002
CONCRETE/CONCRETE BLOCK	1/4" X 1 3/4" HEX HEAD MASONRY	3/16"	9/32"	90H005004
WOOD STUD/GYPSUM WALL	1/4" X 3" HEX HEAD LAG SCREW	3/16"	9/32"	90H087002

AW-LR HANDRAIL

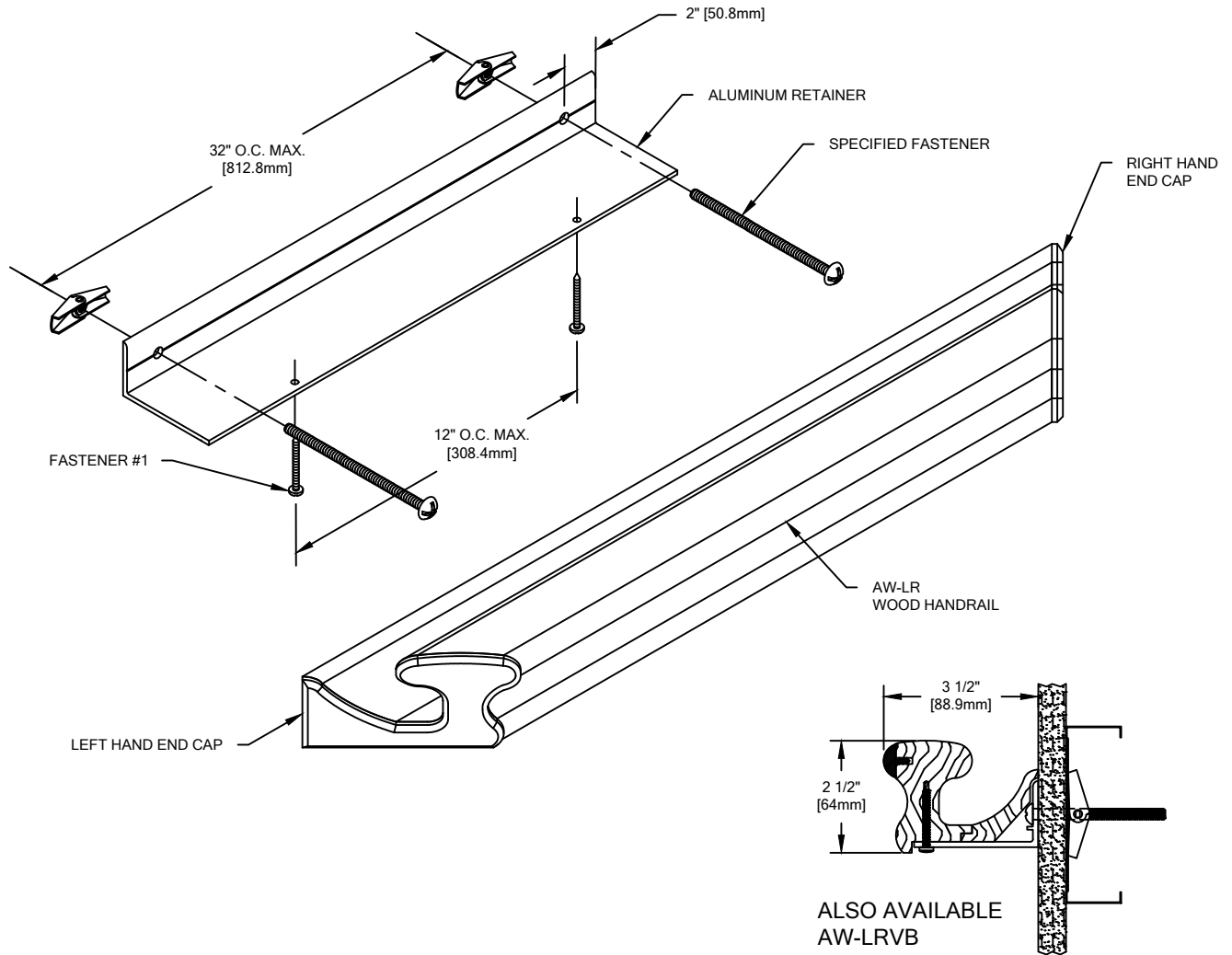
LAYOUT VIEW



LAYOUT VIEW

AW-LR HANDRAIL

TYPICAL ASSEMBLY



1. ESTABLISH HANDRAIL HEIGHT ABOVE FINISH FLOOR. DEDUCT 1 11/16" [42.9mm] AND SNAP A CHALK LINE AT THAT HEIGHT. THIS MARKS THE CENTERLINE LOCATION OF THE RETAINER FASTENERS.
2. DETERMINE WALL FASTENER LOCATIONS BY USING THE REQUIRED DEDUCTIONS (SEE LAYOUT VIEW). PRE-DRILL CLEARANCE HOLES IN ALUMINUM RETAINER (SHORT LEG) 2" [50.8mm] FROM EACH END AND 32" [812.8mm] O.C. AS REQUIRED. REFERENCE CHART ON PAGE 2 FOR DRILL DIAMETERS.
3. USING THE RETAINER AS A TEMPLATE, MARK THE LOCATION OF THE FASTENERS ALONG THE CHALK LINE. USE A LEVEL TO ENSURE THAT THE RETAINER IS PLUMB. DRILL CLEARANCE HOLES IN WALL SURFACE FOR MOUNTING HARDWARE. REFERENCE CHART ON PAGE 2 FOR DRILL DIAMETERS.
4. INSTALL EACH SECTION OF RETAINER USING THE APPROPRIATE HARDWARE. USE A LEVEL TO ENSURE RETAINER IS LEVEL.
5. WITH THE RETAINER MOUNTED ON THE WALL, LOCATE AND DRILL 11/64" DIAMETER CLEARANCE HOLES IN THE RETAINER FOR THE ATTACHMENT OF THE RAIL TO THE RETAINER. LOCATE THE HOLES 2" [50.8mm] FROM EACH END, AND MAINTAIN A MAXIMUM SPACING OF 12" [304.8mm] O.C. FOR THE REMAINDER OF THE HOLES.
6. PLACE THE WOOD RAIL ONTO THE RETAINER AND HOLD TIGHTLY AGAINST THE WALL. USING THE HOLE IN THE ALUMINUM RETAINER AS A GUIDE, DRILL 3/32" DIAMETER PILOT HOLES IN THE WOOD HANDRAIL TO ACCEPT THE #8 X 1 1/2" PAN HEAD TEK SCREWS. ATTACH WOOD HANDRAIL TO THE RETAINER USING THE SUPPLIED SCREWS.
7. TOUCH UP ANY MARKS USING TOUCH UP KIT SUPPLIED WITH THIS SHIPMENT.