

## General Information

Open the pack list on the crate's exterior. Locate the shop drawings and installation instruction inside the box. Review contents and make sure all parts are present. For a rectangular installation, the pack list will include the number of modules and frame pieces. For odd-shaped installations, a drawing will be supplied identifying the module layout in numbered sequence.

If you discover that material is missing or defective, contact our customer service department immediately:  
**800.233.8493**

## Important Notes - Do Not Overlook

Prior to installation, ensure that the material is stored indoors and has acclimated to the environment's temperature for 24 hours.

Assess the site condition prior to installation ensuring the recess is:

- Free of debris and moisture
- The correct depth throughout
- Smooth and flat

High spots should be ground down. Low spots should be filled with a self-leveling grout. The side walls of the recess should also be checked for plumb and defects as this could affect the frame installation (if applicable). If these conditions have been met, you can begin the installation.

We are using a mix of Helix Z1 tiles on the border and Z2 tiles as the center infill. These instructions remain the same for a full Z1 installation.

## Tools Required

You will need a square, utility knife, a drill with 1/8" and 5/16" bits, a #2 Phillips fastener and a tape measure.

## Installation Instructions



**1** Start by dry fitting all frame pieces within the area and use a tape measure to ensure a proper fit. For odd-shaped layouts, match frame tags to the drawing on the pack list



**2** Using a straight edge, ensure the top frame edge is flush with the surrounding floor surface. Shim frame every 24" if necessary to achieve required height



**3** Using the 5/16" masonry bit, drill into the concrete 24" on center. Fasten the frame with the supplied masonry anchors using a #2 Phillips-head screwdriver

## Installation Instructions (continued)



**4** Each tile is designed with two sides of male and female connectors. Tiles are connected by inserting the male into the female connector with a rubber mallet



**5** A correct installation begins by using as many full-size tiles as possible within the recess opening



**6** Starting in one corner and working both sideways and forward, layout and connect the tiles together. Use a rubber mallet to seat the male connection into the female connection



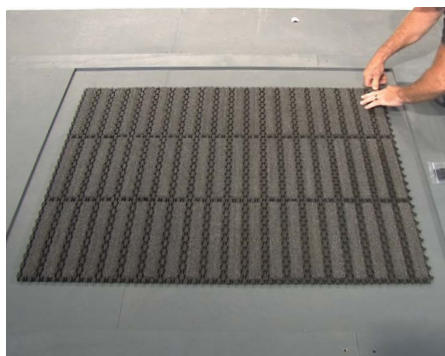
**7** Continue until no more full-size tiles can be used



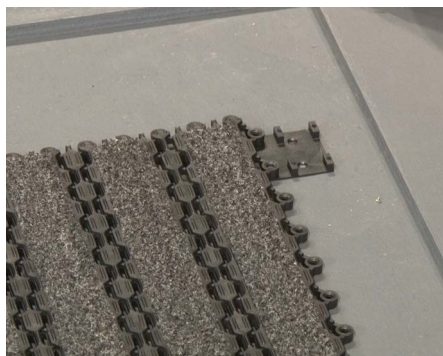
**8** Once completed, shift the full-sized tile unit so it is centered evenly on all four sides of the recess. Use a tape measure to confirm the dimensions



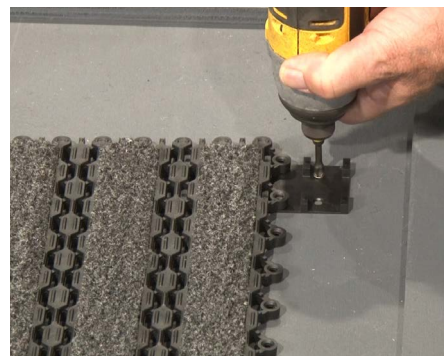
**9** Shown: anchor clips



**10** To keep this full-sized tile unit in place, anchor clips and hardware are supplied to be installed at all four corners of the unit



**11** The anchor clips are designed with four slotted segments. Two slots should be installed under one tile and the remaining two under the adjacent tile



**12** Place anchor clips at each corner of the unit and fasten to the substrate using the supplied hardware

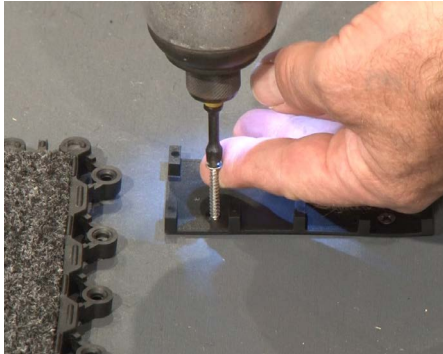


# CS™ Entrance Flooring

Installation Instructions  
Helix® Z1/Z2 with Tapered Angle Frame

View the installation video for this model at  
[www.c-sgroup.com/entrance-flooring/videos](http://www.c-sgroup.com/entrance-flooring/videos)

## Installation Instructions (continued)



**13** Remove the Helix tiles to access the remaining two screw holes and fasten



**14** The remaining border spaces in the recess will need to be filled with Z1 tiles. Measure the remaining opening and transfer the measurements to the tile. Cut with a utility knife and square



**15** Important step: tiles should be installed in alignment with the adjacent tiles and will only require one edge to be cut. Be sure to cut on the opposite side of the required male or female connection



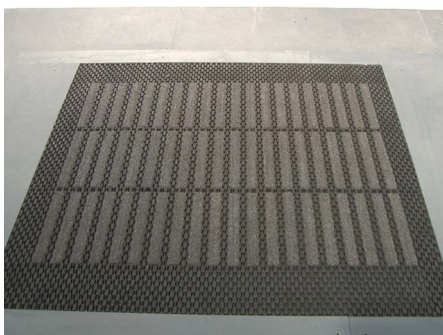
**16** Use a rubber mallet to secure the tiles together



**16** Continue cutting and installing Helix Z1 tiles on all remaining sides



**17** Only corner tiles will need to be cut on two edges



**18** Vacuum the surface to remove any construction debris or dust. Use a damp mop on any exposed Z1 surfaces if necessary. If construction is ongoing, cover the unit with plywood sheathing.



**19** Care & maintenance: Helix can be rolled back for scheduled cleaning to remove the dirt underneath the unit

To view details, specs and product info visit [www.c-sgroup.com/efs](http://www.c-sgroup.com/efs).  
For technical and design assistance call 800.233.8493