

General Information

Open the pack list on the crate's exterior. Locate the shop drawings and installation instruction inside the box. Review contents and make sure all parts are present. For a rectangular installation, the pack list will include the number of modules and frame pieces. For odd-shaped installations, a drawing will be supplied identifying the module layout in numbered sequence.

If you discover that material is missing or defective, contact our customer service department immediately:
800.233.8493

Important Notes - Do Not Overlook

Prior to installation, ensure that the material is stored indoors and has acclimated to the environment's temperature for 24 hours.

Assess the site condition prior to installation ensuring the recess is:

- Free of debris and moisture
- The correct depth throughout
- Smooth and flat

High spots should be ground down. Low spots should be filled with a self-leveling grout. The side walls of the recess should also be checked for plumb and defects as this could affect the frame installation (if applicable). If these conditions have been met, you can begin the installation.

Prior to Final Installation

- Dry fit all materials to ensure proper panel spacing and overall fit.
- Refer to the shop drawings for any required special/custom details or modifications.

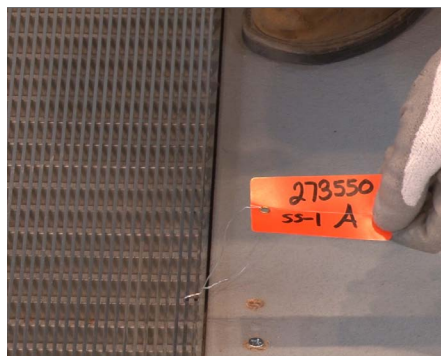
Tools Required

You will need a level, rubber mallet, a 5/32" bit, a 1/8" bit, a 3/8" bit, flathead screwdriver, #2 Phillips-head screwdriver, tape measure, carpenter's pencil or marker, shop vacuum, PPE (gloves, glasses, ear protection, etc.) and a trowel.

Installation Instructions



1 Dry fit all grid modules into the area per the supplied shop drawings.

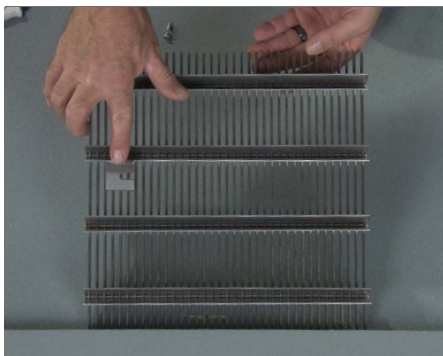


2 Each module is tagged to identify a specific location per drawing.



3 Adjust each module to ensure consistent spacing and alignment.

Installation Instructions (continued)



4 GridLine has a welded tab lockdown for securing the grid to the recess.



5 To begin locking down the grid, make sure the grid modules are aligned and transfer the mark for the anchor to the substrate using a 1/8" drill bit or a center punch tool. Repeat for each lockdown location.



6 Remove the grid panel and begin drilling the lockdown holes using a masonry bit. Drill a 3/8" hole, 5/8" deep.



7 The lead shield and setting tool are shown here. The shield's cone installs into the hole first.



8 Insert the lead shield with the cone portion going into the hole first.



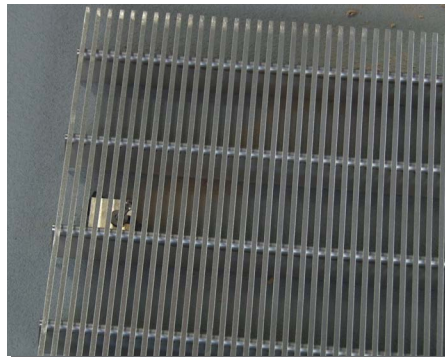
9 Use the setting tool to lock the shield.



10 Insert the mounting (or fastening screw) into the welded tab lockdown. Use a piece of electrical tape to hold the screw in place.



11 Repeat for each lockdown location.



12 To finish the grid panel installation, flip the grid over and align all screws into the lead shields.

Installation Instructions (continued)



13 Beginning in the center of the grid module and working your way out to the edges, **start** the screws using 1/8" Allen wrench.



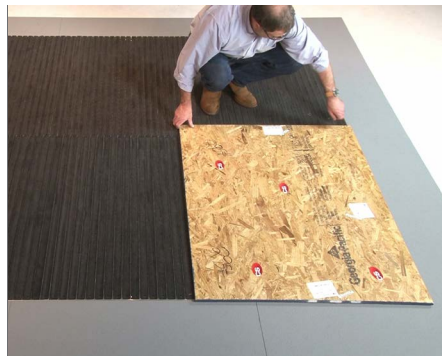
14 Go back to the center and **lightly draw down** the screws, working your way out to the edges.



15 Go back to the center and **tighten** the screws, working your way out to the edge. Repeat this process for the remaining modules.



16 Repeat each step for all remaining modules.



17 If building construction is to continue, protect the grid with plywood sheathing.



18 Care & Maintenance: Once the installation is complete, use denatured alcohol to clean with a mop.