

FWF & FWFC 100-200

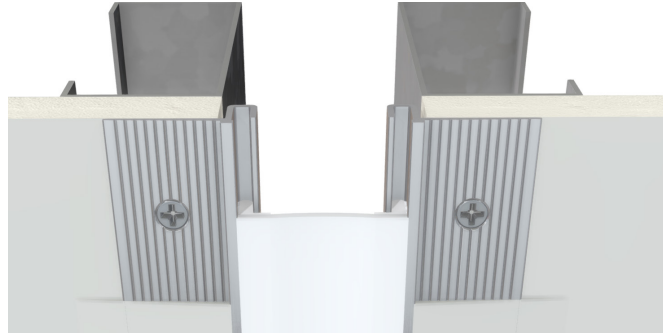
TECHNICAL DATA:

Aluminum

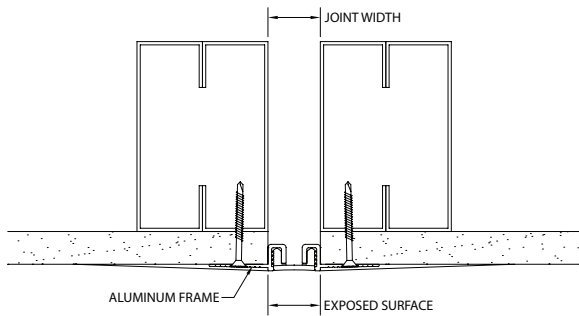
- Extrusion – CS uses multiple alloys & tempers which are established to be the most appropriate for the given use of individual parts. Will be one of the following: (6063-T5, T6, T52) (6061-T5, T6, T51) (6105-T5, T6) (6005-T5) (6005A-T5, T61), ASTM B221
- Aluminum in contact with concrete/masonry will have a 2 mil heavy metal free high solids primer

Seal

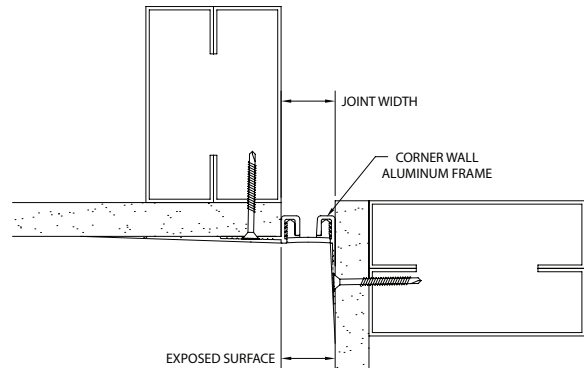
- Dual Durometer 65 Shore-A, 90 Shore-A, ASTM D2000
- Available in 5 colors.



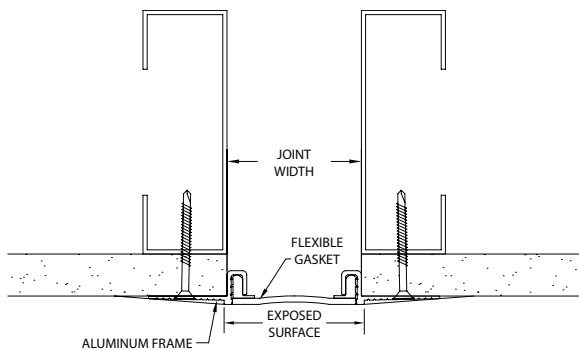
| MODEL | JOINT WIDTH | MINIMUM OPENING | MAXIMUM OPENING | EXPOSED SURFACE | BLOCKOUT WIDTH | BLOCKOUT HEIGHT |
|----------|--------------|-----------------|-----------------|-----------------|----------------|-----------------|
| FWF-100 | 1.00" (25mm) | 0.75" (19mm) | 1.25" (32mm) | 1.06" (27mm) | N/A | N/A |
| FWF-200 | 2.00" (51mm) | 1.50" (38mm) | 2.50" (64mm) | 2.06" (52mm) | N/A | N/A |
| FWFC-100 | 1.00" (25mm) | 0.75" (19mm) | 1.25" (32mm) | 1.06" (27mm) | N/A | N/A |
| FWFC-200 | 2.00" (51mm) | 1.50" (38mm) | 2.50" (64mm) | 2.06" (52mm) | N/A | N/A |



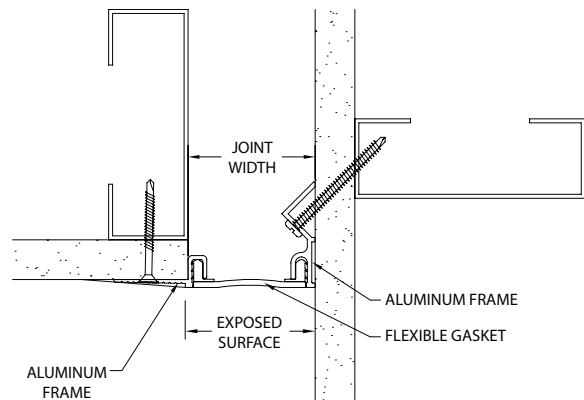
FWF-100



FWFC-100



FWF-200



FWFC-200