








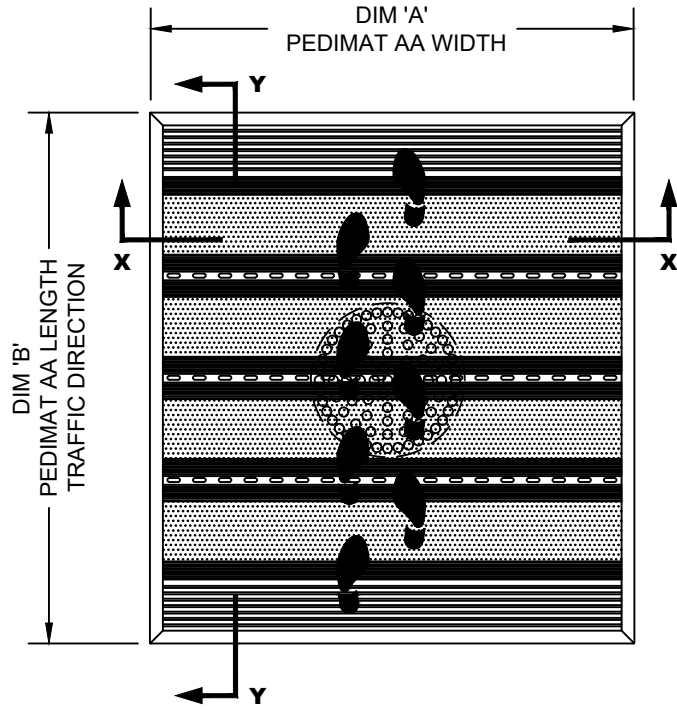
PEDIMAT AA WITH RECESSED LEVEL BASE FRAME

INSERT STYLE:      INSERT COLOR: PLEASE ADVISE      CATALOG NUMBER: M2      PART NUMBER:

NO.	REVISION	DATE	BY
NO.	F&F RELEASE	DATE	BY

- |   |   |  |  |  |  |  |
|---|---|--|--|--|--|--|
|  RECYCLED RUBBER<br>M2RR<br>19R005XXX |  EXTERIOR CARPET<br>M2EC<br>19C018XXX |  HEAVY-DUTY CARPET<br>M2HC<br>19C010XXX<br>19C022XXX |  RUBBER<br>M2V<br>19V022501<br>#8501 BLACK |  VINYL ABRASIVE<br>M2VA<br>19A007XXX<br>19M001XXX |  SERRATED ALUM. INSERT<br>M2SAI<br>19A001001 |  Poured ABRASIVE INSERT<br>M2PA<br>19A005XXX |
|---|---|--|--|--|--|--|

PEDIMAT AA INSERT STYLES



TYPICAL PLAN VIEW

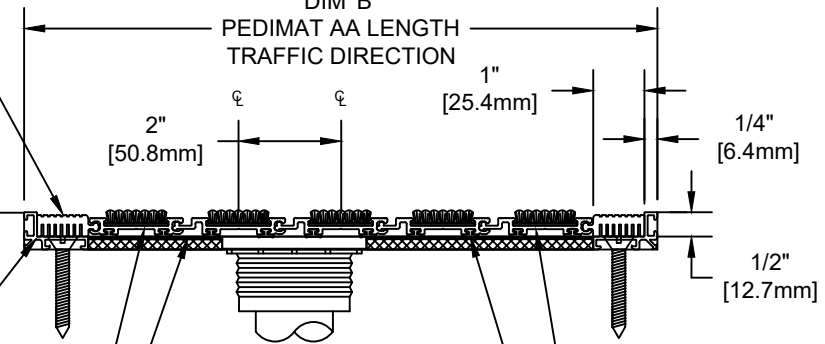
SQUARE END VINYL  
1" (25.4mm) WIDE (17V013XXX)  
2" (50.8mm) WIDE (17V014XXX)

ALUMINUM LEVEL  
BASE FRAME (17A003XXX)

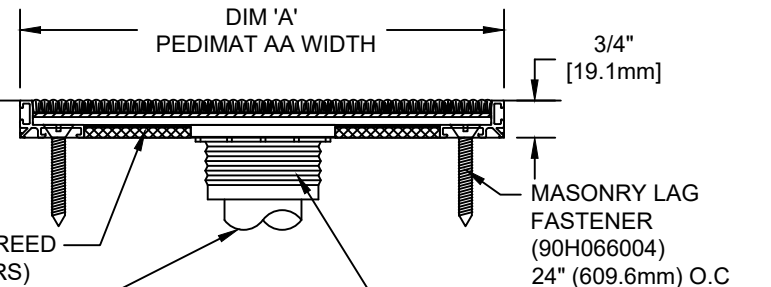
FEMALE PEDIMAT AA  
RAIL (17A002XXX)  
16 GA ALUMINUM PAN

DIM 'B'

PEDIMAT AA LENGTH  
TRAFFIC DIRECTION



SECTION Y-Y



SECTION X-X

NOTES:

\*ALL SURFACES IN CONTACT WITH MASONRY ARE TO RECEIVE A COAT OF ZINC CHROMATE PRIMER

\*PLEASE VERIFY TRAFFIC DIRECTION

\*PEDIMAT AA SHALL BE ABLE TO SUPPORT A 350 LB. ROLLING LOAD. LARGER LOADING MAY BE ACCOMMODATED. CONTACT C/S SALES WITH SPECIFIC LOADING REQUIREMENTS.

\*MAX. SINGLE GRID SIZE NOT TO EXCEED 12'-0" (3.66M) IN WIDTH (DIM "A") OR 100 SQUARE FEET

\*ADDITIONAL SPECIFICATIONS ARE CONTAINED IN THE LATEST C/S CATALOG OR AT C-SGROUP.COM AND ARE CONSIDERED PART OF THIS TRANSMITTAL.

**CS Construction Specialties**  
6696 Route 405 Highway, Muncy PA 17756  
(800) 233-8493 • Fax (570) 546-4692 • www.c-sgroup.com

QTY	MARK #	LOCATION	MODEL	DIM 'A' WIDTH	DIM 'B' LENGTH	FINISH	NOTES

PROJECT:		
LOCATION:		
CONTRACTOR:		
AGENT:		SHT:
DRG. BY:	DATE:	JOB NO.:

PLEASE VERIFY ALL