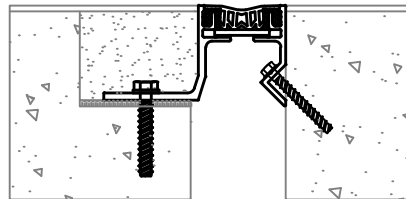
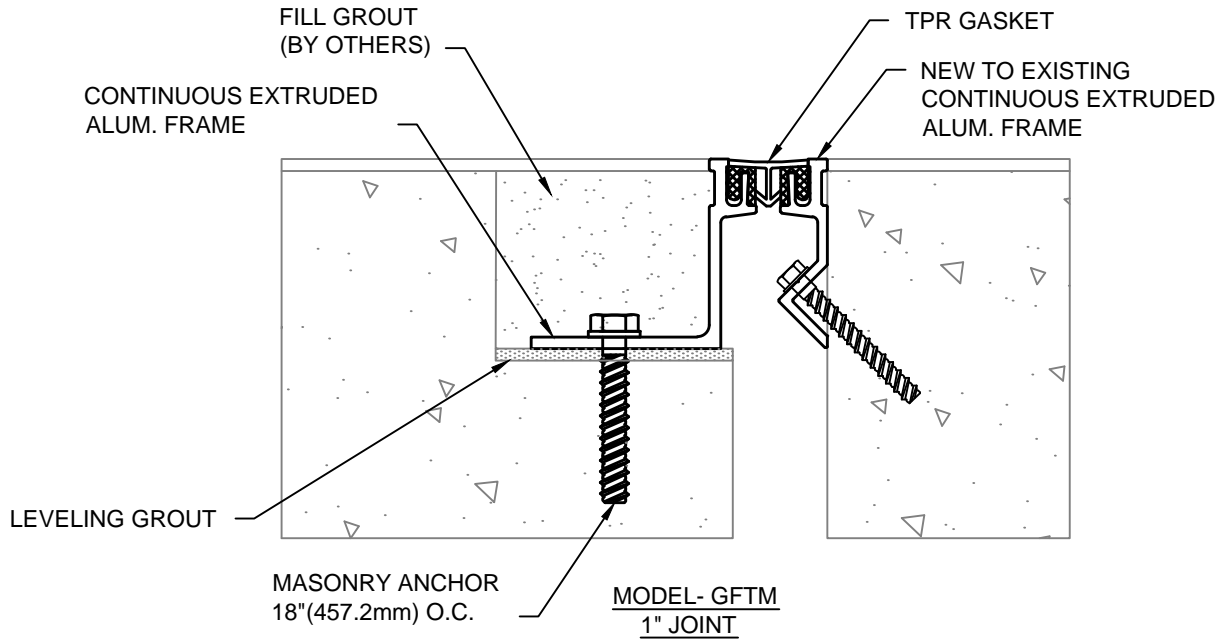


MODEL GFTM INSTALLATION INSTRUCTIONS



IMPORTANT INFORMATION

MODEL- GFTM
2" JOINT

Prior to the commencement of Installation, all materials **MUST** be inspected for Damage. Any damage must be reported to CONSTRUCTION SPECIALTIES, INC., as soon as possible, so that replacement materials may be furnished without delay.

All work must be completed as per Architect's Approved "Shop Drawings", and in accordance with these Installation Instructions. When installation is complete, all materials must be protected from damage until the Architect's FINAL INSPECTION.

All materials should be arranged in the order that they are to be installed. All hardware required for each portion of the work should be placed with the appropriate materials.

Please review all Approved Shop Drawings and this Document to familiarize yourself with all the details and components of this assembly.

IMPORTANT:
READ THROUGH ALL INSTRUCTIONS PRIOR TO STARTING INSTALLATION

7/30/14



Construction Specialties™

6696 Route 405 Highway, Muncy PA 17756
(800) 233-8493 • Fax (570) 546-5169 •
www.c-sgroup.com

This document is the property of Construction Specialties, Inc. and contains CONFIDENTIAL PROPRIETARY INFORMATION that is not to be disclosed to third parties and is not to be used without approval in writing from Construction Specialties, Inc.

Notes:

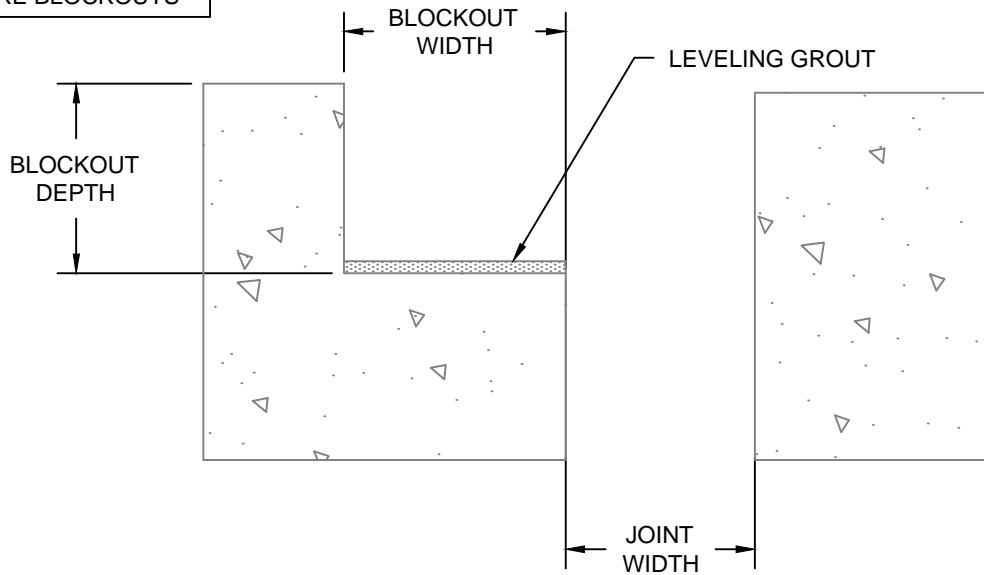
Before beginning installation, review the architectural drawings and approved Construction Specialties Inc. shop drawings to familiarize yourself with the appropriate joint cover models and locations.

Check all of the joint cover components to confirm that the correct joint cover model and size have been received. Also, check for materials that may have been damaged during shipping. Report all incorrect and/or damaged components to C/S at 800-233-8493.

Read through all the steps of these instructions prior to beginning work.

STEP 1

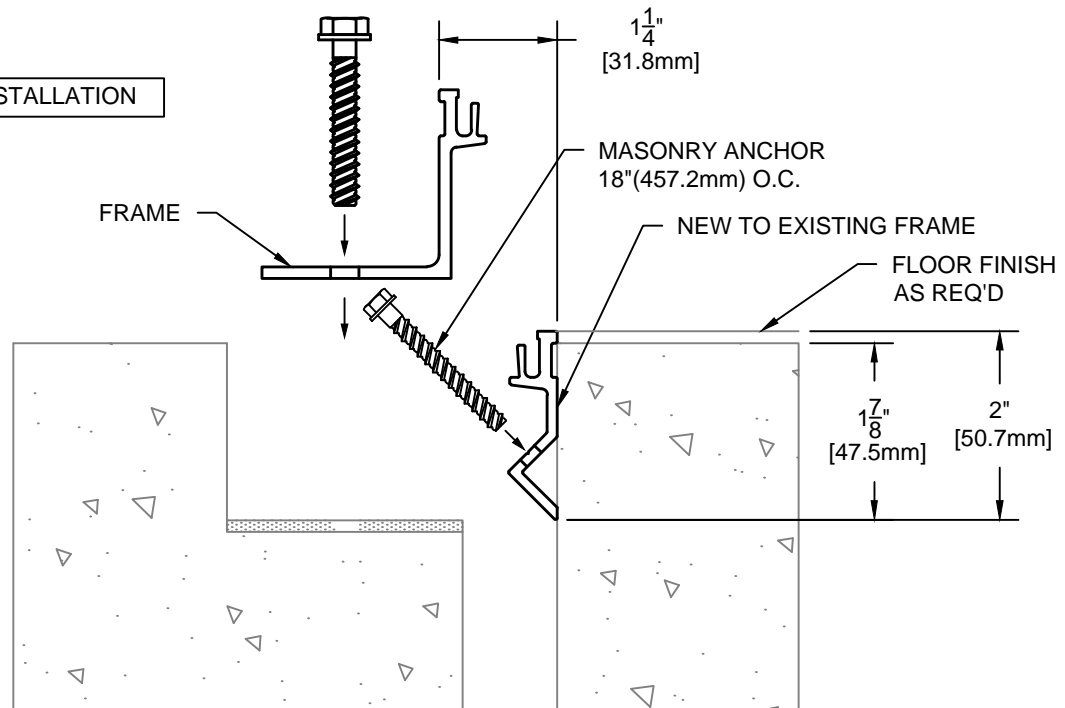
PREPARE BLOCKOUTS



- 1.1) The blockouts must be prepared to receive the joint cover.
 - The blockout width will vary with model as noted on the C/S shop drawings.
 - The blockout depth will vary (1" to 3") as noted on the C/S shop drawings. Depth may be adjusted as needed to accommodate a floor finish material when required and as indicated on the architectural drawings and/or C/S shop drawings.
 - It is recommended that the blockout be formed a minimum of 1/8" deeper to allow the blockouts to be leveled for installation of the joint cover.
 - Apply a high-strength leveling grout to the base of the blockouts to provide a continuous, solid, flat and level base for the joint cover. (Note: The blockouts must be level across the width of the joint.)

STEP 2

1" JOINT - FRAME INSTALLATION



MODEL- GFTM-1"

Notes:

- If a C/S Fire Barrier is to be installed in the joint, please review the Fire Barrier Installation Instructions supplied, and if required install the Fire Barrier **BEFORE** installation of C/S Seismic Expansion Joint Aluminum Frames.
- If a Waterstop is to be installed in the joint, please review the Waterstop Installation Instructions supplied, and if required install the Waterstop **BEFORE** installation of C/S Seismic Expansion Joint Aluminum Frames.

New to Existing Frame:

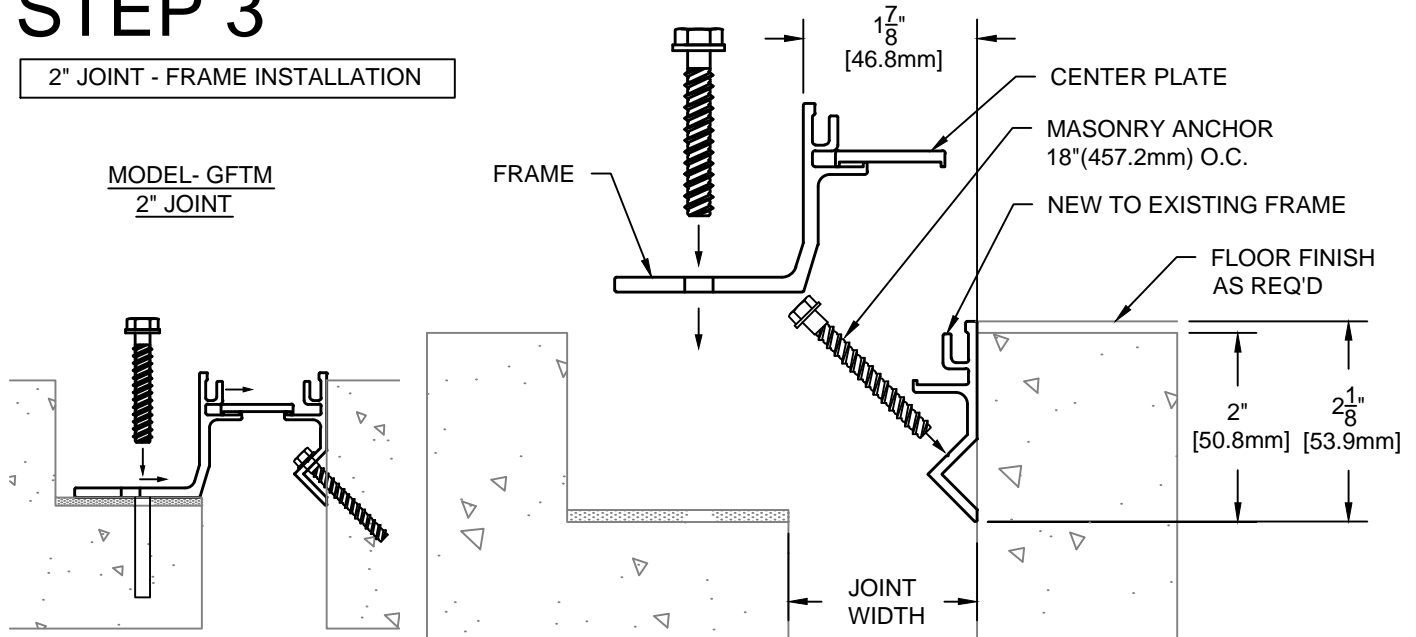
- 2.1) Begin installation of the New to Existing Frame by placing a length of the New to Existing Frame beside the breakout. Cut the New to Existing Frame to length as needed. Note the orientation of the New to Existing Frame in detail above.
- 2.2) Locate the Frame by measuring 1-7/8" down from the top of the slab or deduct as appropriate for req'd. floor finish. Mark a line on the slab's surface.
- 2.3) Align the bottom of the New to Existing Frame with the line on the slab's surface. Using the New to Existing Frame as a template, mark the locations of the anchor bolts.
- 2.4) Remove the New to Existing Frame and drill the holes for the anchor bolts. The holes are to be drilled with the appropriate size and type of drill bit as indicated on C/S Shop Drawings or by the manufacturer of the C/S supplied anchor bolts. Note: Extra care must be taken when drilling the slab at an angle to insure that the holes are at the appropriate level.
- 2.5) Reposition and attach the New to Existing Frame to the slab with the C/S supplied anchor bolts following the manufacturer's guidelines.
- 2.6) Repeat this installation procedure for any additional lengths of New to Existing Frame.

Frame:

- 2.1a) Begin installation of the Frame by placing a length of the Frame into the breakout. Cut the Frame to length as needed. Note the orientation of the Frame in detail above.
- 2.2a) Locate the Frame 1-1/4" from the New to Existing Frame as shown above. Using the Frame as a template, mark the locations of the anchor bolts.
- 2.3a) Remove the Frame and drill the holes for the anchor bolts. The holes are to be drilled with the appropriate size and type of drill bit as indicated on the C/S Shop Drawings or by the manufacturer of the C/S supplied anchor bolts.
- 2.4a) Reposition and attach the Frame to the slab with the C/S supplied anchor bolts following the manufacturer's guidelines.
- 2.5a) Repeat this installation procedure for any additional lengths of Frame.

STEP 3

2" JOINT - FRAME INSTALLATION



Notes:

- If a C/S Fire Barrier is to be installed in the joint, please review the Fire Barrier Installation Instructions supplied, and if required install the Fire Barrier **BEFORE** installation of C/S Seismic Expansion Joint Aluminum Frames.
- If a Waterstop is to be installed in the joint, please review the Waterstop Installation Instructions supplied, and if required install the Waterstop **BEFORE** installation of C/S Seismic Expansion Joint Aluminum Frames.

New to Existing Frame:

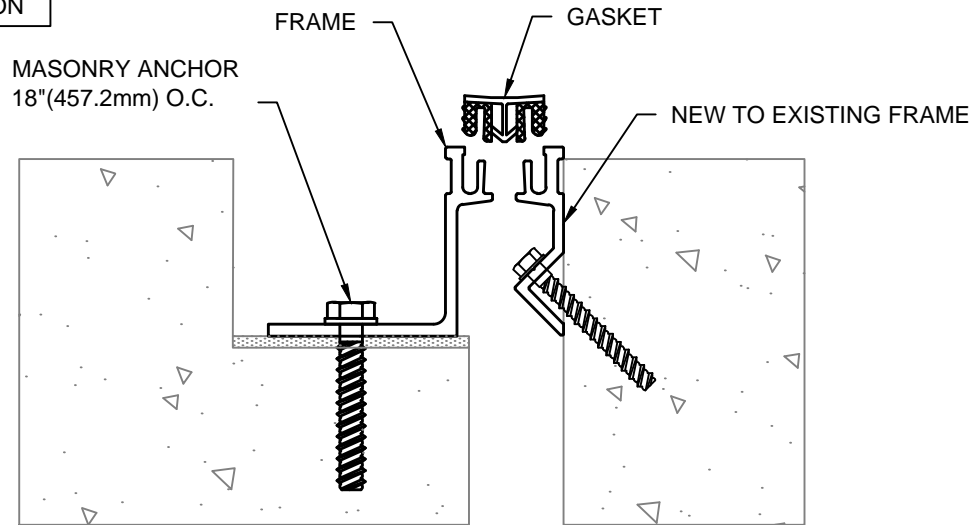
- 3.1) Begin installation of the New to Existing Frame by placing a length of the New to Existing Frame beside the blockout. Cut the New to Existing Frame to length as needed. Note the orientation of the New to Existing Frame in detail above.
- 3.2) Locate the Frame by measuring 2" down from the top of the slab or deduct as appropriate for the req'd. floor finish. Mark a line on the slab's surface.
- 3.3) Align the bottom of the New to Existing Frame with the line on the slab's surface. Using the New to Existing Frame as a template, mark the locations of the anchor bolts.
- 3.4) Remove the New to Existing Frame and drill the holes for the anchor bolts. The holes are to be drilled with the appropriate size and type of drill bit as indicated on the C/S Shop Drawings or by the manufacturer of the C/S supplied anchor bolts. Note: Extra care must be taken when drilling the slab at an angle that the holes are at the appropriate level.
- 3.5) Reposition and attach the New to Existing Frame to the slab with the C/S supplied anchor bolts following the manufacturer's guidelines.
- 3.6) Repeat this installation procedure for any additional lengths of New to Existing Frame.

Frame:

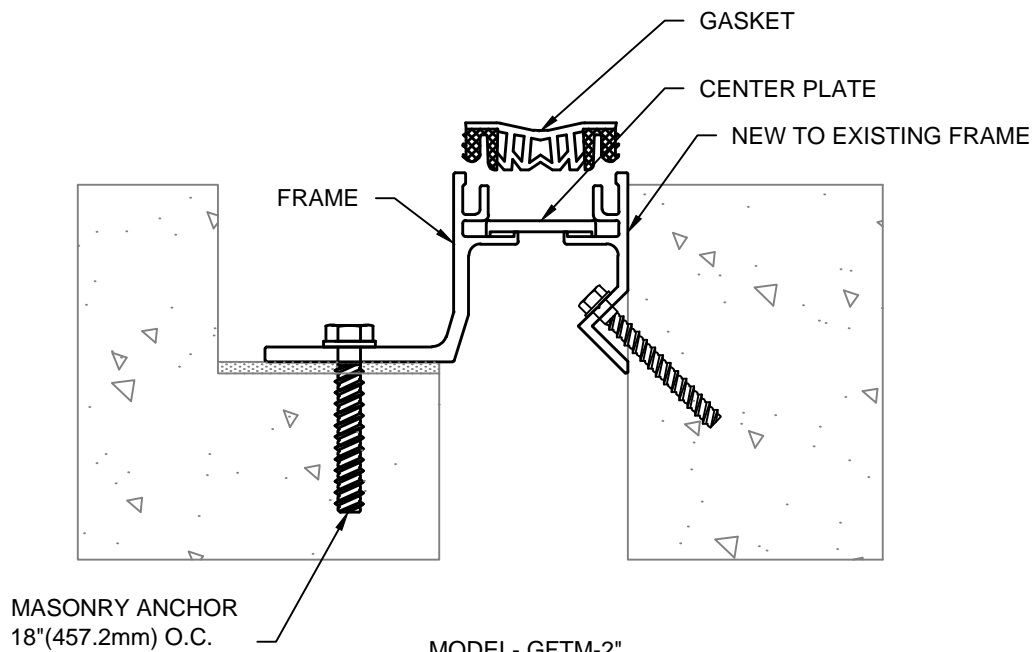
- 3.1a) Begin installation of the Frame by placing a length of the Frame into the blockout. Cut the Frame to length as needed. Note the orientation of the Frame in detail above.
- 3.2a) Locate the Frame 1-7/8" from the New to Existing Frame. Using the Frame as a template, mark the locations of the anchor bolts.
- 3.3a) Remove the Frame and drill the holes for the anchor bolts. The holes are to be drilled with the appropriate size and type of drill bit as indicated on the C/S Shop Drawings or by the manufacturer of the C/S supplied anchor bolts.
- 3.4a) Reposition the Frame (Note: Make sure that the Center Plate is placed in the Frame before the Frame is installed. Then slide the Center Plate into position on the New to Existing Frame). Attach the Frame to the slab with the C/S supplied anchor bolts following the manufacturer's guidelines.
- 3.5a) Repeat this installation procedure for any additional lengths of Frame.

STEP 4

GASKET INSTALLATION



MODEL- GFTM-1"



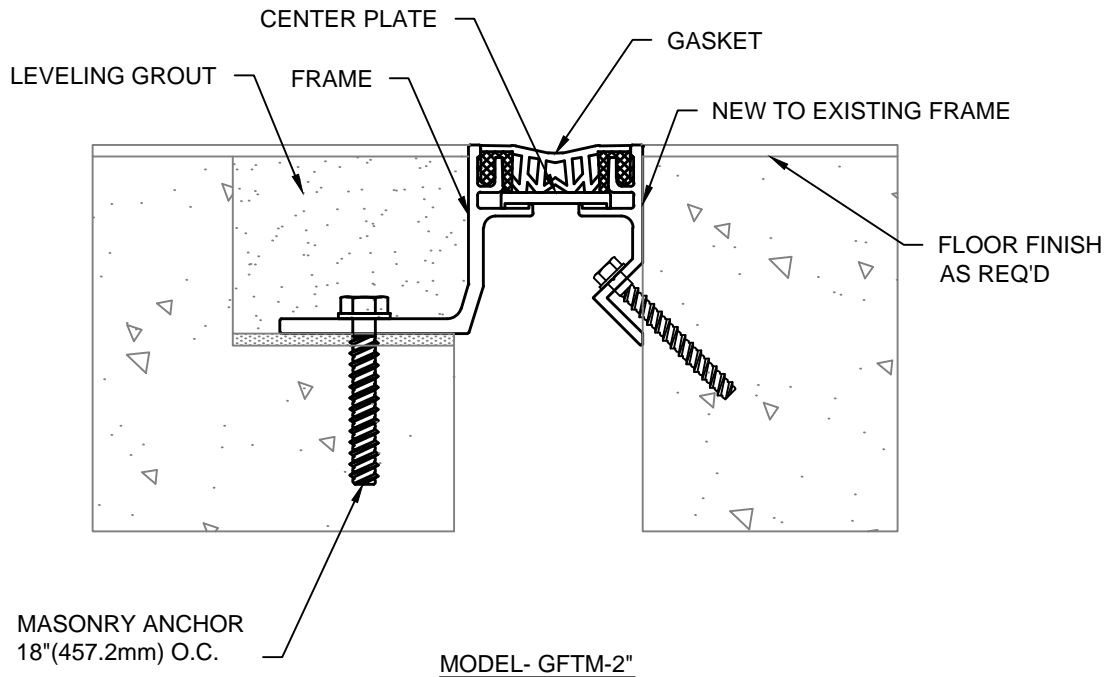
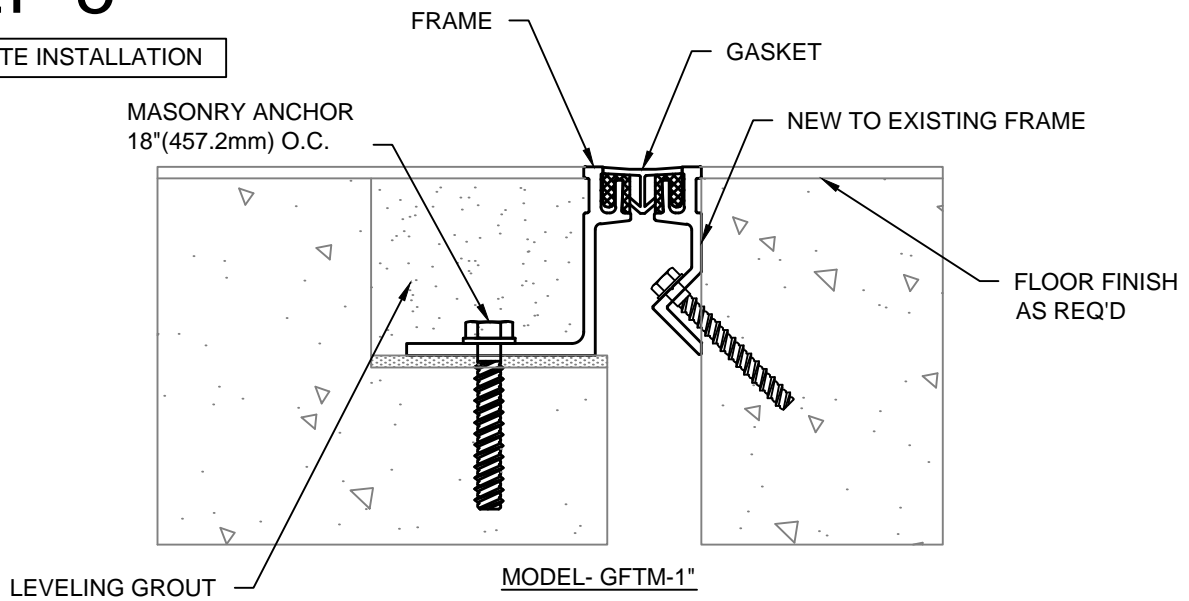
MODEL- GFTM-2"

- 4.1) Begin installation of Gasket by placing a length of the Gasket over the joint and cutting it to the req'd length. It may be necessary to drive the gasket in place using a rubber mallet and a wood block. Lubricating the push in areas by spraying them with a light mist of water will also ease the installation. When gaskets are properly installed, they should be flush with the top surface of the Center Plate and Frames.

Tip: If you spray the push in arrow with soapy water, the Gasket slides in much easier.

STEP 5

COMPLETE INSTALLATION



- 5.1) Protect the top surface of the Gasket and Frame with masking tape and complete installation by filling the blockout area with non-shrink grout and apply floor finish as req'd.
- 5.2) When installation of the C/S Floor Expansion Joint Cover has been completed, remove the masking tape, all residue and foreign matter from the area and joint cover.
- 5.3) Clean the C/S Joint Cover and adjoining surfaces with proper cleaner.
- 5.4) Protect the Joint Cover until Architect's final inspection.