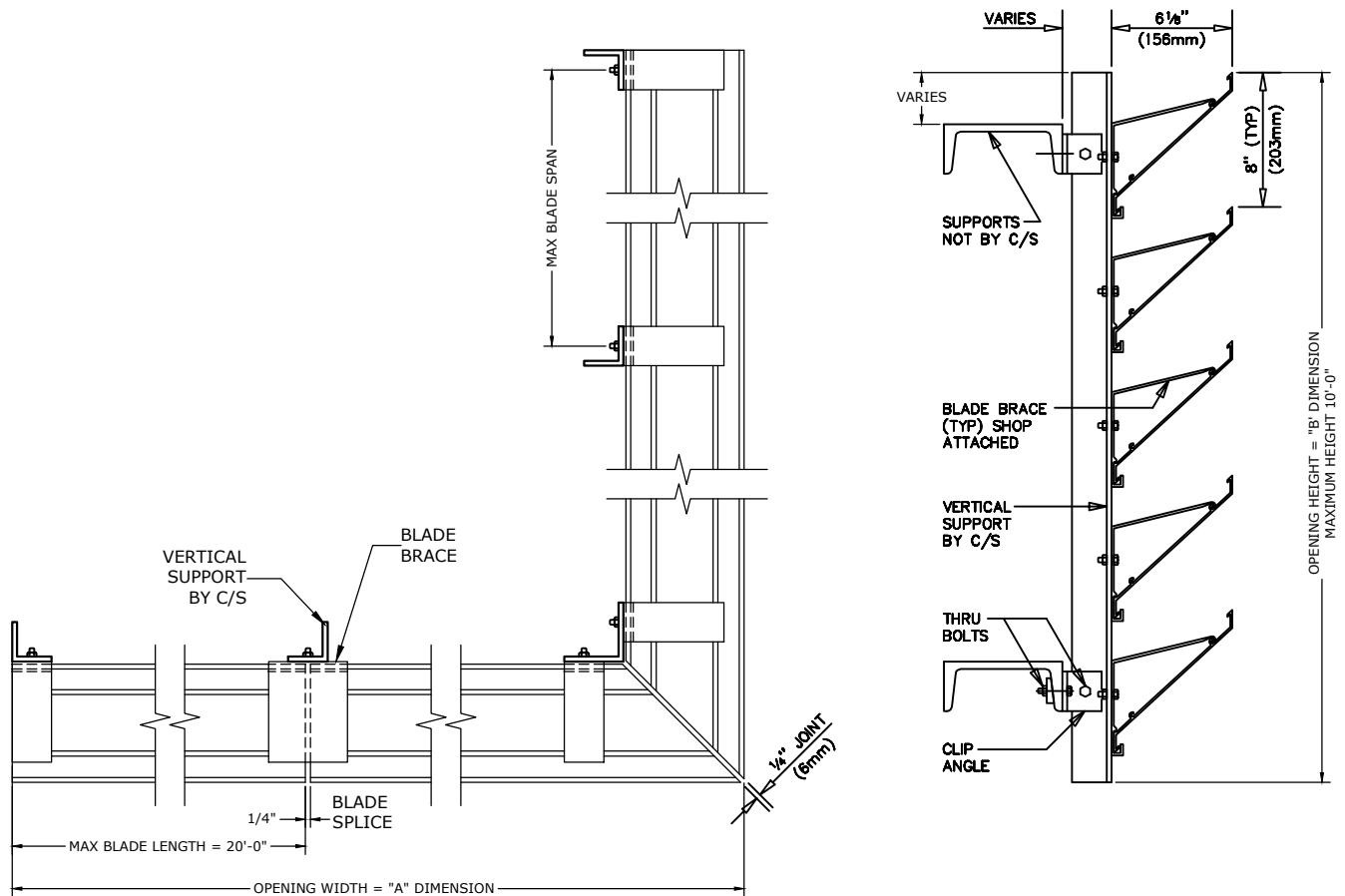
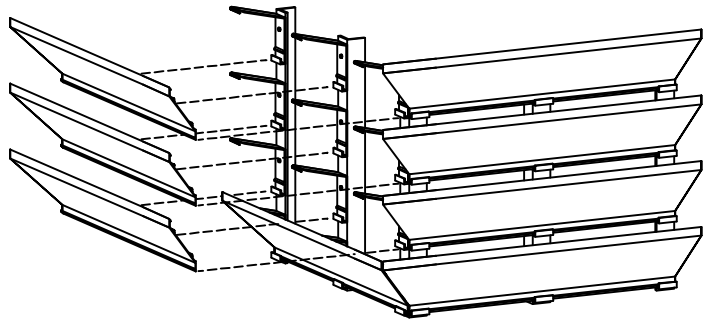


CS VERT-A-CADE MODEL VAC-300



FINISHES

- ☐ STANDARD MILL
- ☐ FLUOROPOLYMER POWDER COAT
(NOT AVAILABLE IN 600XL OR 700)
- ☐ KYNAR (500),(600XL)or(700)
 - ☐ (1) OF C/S STD. COLORS
 - ☐ CUSTOM COLOR, C/S REQUIRES A COLOR CHIP FOR MATCHING
- ☐ BRONZE ANODIC (DARK OR MED.)
- ☐ CLEAR ANODIZE
- ☐ OTHER _____



NOTES:

MAXIMUM HEIGHT = 10'-0"
VERTICAL SUPPORTS AND HORIZONTAL BLADES SHIP LOOSE FOR
FIELD ASSEMBLY BY INSTALLER

UNSUPPORTED BLADE LENGTH= _____ @ _____ PSF.

MARK	QTY.	"A" DIM.	"B" DIM.	# OF VERTICAL SUPPORTS	VERTICAL SUPPORT SPACING	# OF BLADE SPLICES	VERTICAL SUPPORT SIZE	REMARKS

Construction Specialties, Inc.
3 Werner Way
Lebanon, New Jersey 08833
(800) 233-8493

PROJECT:

CUSTOMER:

ARCH'T:

AGENT:

DRAWN
BY:

DATE:

DWG.
NO:

SHEET OF