

# SGW & SGWC

## TECHNICAL DATA:

### Aluminum

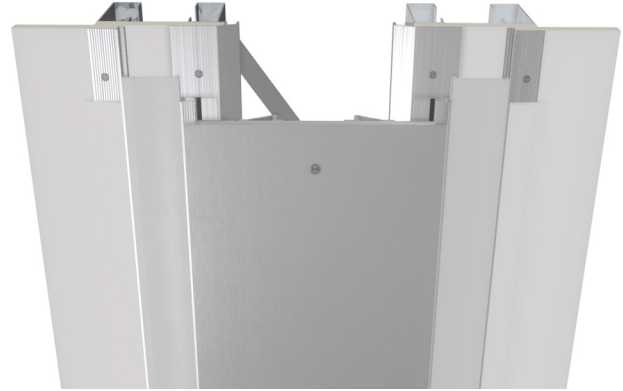
- Extrusion – CS uses multiple alloys & tempers which are established to be the most appropriate for the given use of individual parts. Will be one of the following: (6063-T5, T6, T52) (6061-T5, T6, T51) (6105-T5, T6) (6005-T5) (6005A-T5, T61), ASTM B221
- Sheet – 6061-T6, 3003-H14, 5005-H34, ASTM B209
- Aluminum in contact with concrete/masonry will have a 2 mil heavy metal free high solids primer

### Seal

- Dual Durometer 65 Shore A, 90 Shore A, ASTM D2000
- Available in 5 colors.

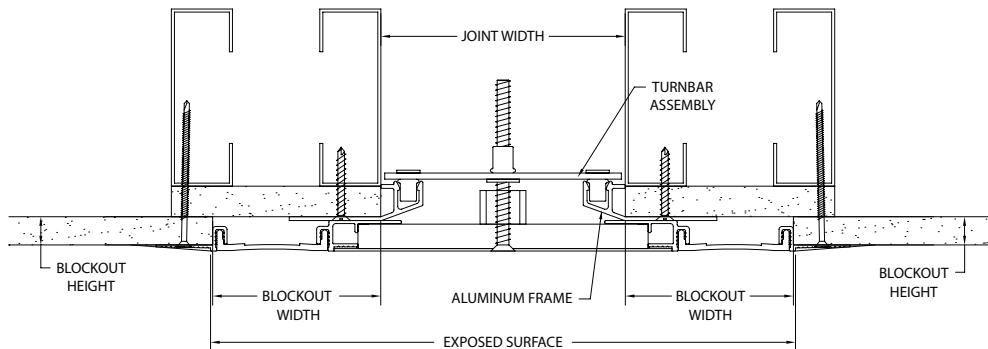
### Turnbar

- Material – C1075 Blue Temper Spring Steel
- Hardness – RC 44-47
- Finish – “A” Coating (Corrosion Protection)



MODEL	JOINT WIDTH	MINIMUM OPENING	MAXIMUM OPENING	EXPOSED SURFACE	BLOCKOUT WIDTH	BLOCKOUT HEIGHT
SGW-500	5.00" (127mm)	2.75" (70mm)	8.75" (222mm)	12.00" (305mm)	3.50" (89mm)	0.63" (16mm)
SGW-600	6.00" (152mm)	2.75" (70mm)	9.25" (235mm)	13.00" (330mm)	3.50" (89mm)	0.63" (16mm)
SGW-700	7.00" (178mm)	2.75" (70mm)	11.75" (298mm)	15.00" (381mm)	4.00" (102mm)	0.63" (16mm)
SGW-800	8.00" (203mm)	2.75" (70mm)	12.75" (324mm)	16.00" (406mm)	4.00" (102mm)	0.63" (16mm)
SGW-900	9.00" (229mm)	2.75" (70mm)	14.13" (359mm)	18.00" (457mm)	4.50" (114mm)	0.63" (16mm)
SGW-1000	10.00" (254mm)	2.75" (70mm)	15.75" (400mm)	19.00" (483mm)	4.50" (114mm)	0.63" (16mm)
SGW-1100	11.00" (279mm)	2.75" (70mm)	17.75" (451mm)	21.00" (533mm)	5.00" (127mm)	0.63" (16mm)
SGW-1200	12.00" (305mm)	2.75" (70mm)	18.75" (476mm)	22.00" (559mm)	5.00" (127mm)	0.63" (16mm)
SGW-1300	13.00" (330mm)	2.75" (70mm)	20.75" (527mm)	24.00" (610mm)	5.50" (140mm)	0.63" (16mm)
SGW-1400	14.00" (356mm)	2.75" (70mm)	21.75" (552mm)	25.00" (635mm)	5.50" (140mm)	0.63" (16mm)
SGW-1500	15.00" (381mm)	2.75" (70mm)	22.75" (578mm)	27.00" (686mm)	6.00" (152mm)	0.63" (16mm)
SGW-1600	16.00" (406mm)	2.75" (70mm)	24.75" (629mm)	28.00" (711mm)	6.00" (152mm)	0.63" (16mm)

Call factory for joints larger than 16"



SGW

# SGW & SGWC

MODEL	JOINT WIDTH	MINIMUM OPENING	MAXIMUM OPENING	EXPOSED SURFACE	BLOCKOUT WIDTH	BLOCKOUT HEIGHT
SGWC-500	5.00" (127mm)	3.75" (95mm)	6.75" (171mm)	8.50" (216mm)	3.50" (89mm)	0.63" (16mm)
SGWC-600	6.00" (152mm)	4.25" (108mm)	7.50" (191mm)	9.50" (241mm)	3.50" (89mm)	0.63" (16mm)
SGWC-700	7.00" (178mm)	5.00" (127mm)	9.25" (235mm)	11.00" (279mm)	4.00" (102mm)	0.63" (16mm)
SGWC-800	8.00" (203mm)	5.50" (140mm)	10.25" (260mm)	12.00" (305mm)	4.00" (102mm)	0.63" (16mm)
SGWC-900	9.00" (229mm)	6.00" (152mm)	11.50" (292mm)	13.50" (343mm)	4.50" (114mm)	0.63" (16mm)
SGWC-1000	10.00" (254mm)	6.50" (165mm)	12.75" (324mm)	14.50" (368mm)	4.50" (114mm)	0.63" (16mm)
SGWC-1100	11.00" (279mm)	7.00" (178mm)	14.25" (362mm)	16.00" (406mm)	5.00" (127mm)	0.63" (16mm)
SGWC-1200	12.00" (305mm)	7.50" (191mm)	15.25" (387mm)	17.00" (432mm)	5.00" (127mm)	0.63" (16mm)
SGWC-1300	13.00" (330mm)	8.00" (203mm)	16.75" (425mm)	18.50" (470mm)	5.50" (140mm)	0.63" (16mm)
SGWC-1400	14.00" (356mm)	8.50" (216mm)	17.75" (451mm)	19.50" (495mm)	5.50" (140mm)	0.63" (16mm)
SGWC-1500	15.00" (381mm)	9.00" (229mm)	18.75" (476mm)	21.00" (533mm)	6.00" (152mm)	0.63" (16mm)
SGWC-1600	16.00" (406mm)	9.50" (241mm)	20.25" (514mm)	22.00" (559mm)	6.00" (152mm)	0.63" (16mm)

Call factory for joints larger than 16"

