

Blade Options - Traditional and Twisted



Traditional blades can be used in unique ways but our twisted blades add a whole new dimension of energy to a building. Twisted blades are perfect for design enthusiasts looking to add excitement and the illusion of movement to your project.

Product Details

- Extruded Aluminum (Alloy 6063-T6)
- Available options:
 - Airfoil or rectangle tube blades
 - Twisted blades
 - Lighted blades
- Airfoil and rectangle tube blade sizes 4" - 24" (other sizes available upon request)
- Twisted blade sizes and twist rate
 - Airfoil: 12" - 5.625° per foot
 - Rectangular Tube: 2" x 12" - 4.375° per foot

Warranty

- 1-year Material Warranty
- 20-year Finish Warranty (excludes anodized)
- 10-year Finish Warranty Wood Grain
- 10-year Finish Warranty Facades by Design

Finish Options



Kynar &
Powder Coat



Pearlescent
& Metallic



Wood Grain
Patterns



Facades by
Design



Custom
Color

See all finish options online at c-sgroup.com.

Blade Options

BLADE PROFILE	WIDTH	DEPTH	MAX LENGTH*
XL One-Piece Airfoil	18" - 24" (457.2mm - 609.6mm)	4" - 4 1/2" (101.6mm - 114.3mm)	20' (6.10m)
Two-Piece Airfoil	14" - 24" (355.6mm - 609.6mm)	2 3/8" - 4 1/2" (60.3mm - 114.3mm)	14' (4.27m)
One-Piece Airfoil	3" - 12" (76.2mm - 304.8mm)	1" - 2" (25.4mm - 50.8mm)	20' (6.10m)
Long-Span Airfoil	6" - 12" (152.4mm - 304.8mm)	2" - 3" (50.8mm - 76.2mm)	20' (6.10m)
Rectangle**	6" - 20" (152.4mm - 508mm)	2" - 2 1/2" (50.8mm - 63.5mm)	14' - 20' (4.27m - 6.10m)

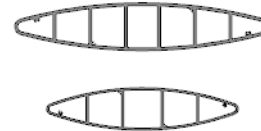
* Max length will vary based on wind load, connection type, shop limitation, finishing, and shipping restrictions

** 20" Rectangle is a single-piece extrusion

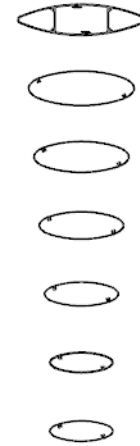
TWISTED PROFILE	BLADE SIZE	MAXIMUM TWIST RATE
Airfoil	12" (304.8mm)	5.625° per foot
Rectangular Tube	2" x 12" (50.8mm x 304.8mm)	4.375° per foot

For information on LED lighting see the Lighted Blade Component card.

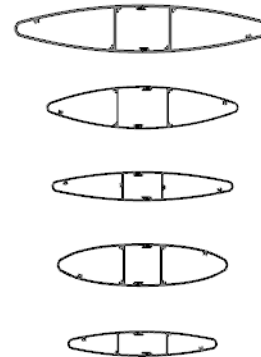
XL One-Piece Airfoil Blades



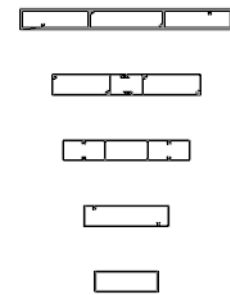
Long Span Airfoil Blades



Two-Piece Airfoil Blades



Rectangle Tube Blades



One-Piece Airfoil Blades

