

**Acrovyn by Design® Tapestry™ Collection | Coastal**



The Acrovyn by Design® Tapestry™ Collection brings authenticity to design by utilizing textiles with artisan charm that embody tranquility, harmony, and balance. This collection evokes a sense of connection to nature and the experiences within.

Coastal pattern, inspired by ripples in water, fuses the depth of woven fibers with industry-proven Acrovyn® durability, cleanability, and impact protection in a uniquely engineered composite that traditional wall coverings and fabrics can't match. The pattern runs vertically with natural variation.

Supplied in 4' x 8' sheets in .040" thickness or can be specified for our wall panel products. Tapestry™ is designed to coordinate with Acrovyn® solid colors, woodgrains, Acrovyn by Design patterns, and aluminum trims. For more information or to view additional patterns, visit [www.acrovyn.com/tapestry](http://www.acrovyn.com/tapestry).



**Acrovyn by Design® Tapestry™ Collection | Coastal**



Fete en Blanc



Isle of Sand



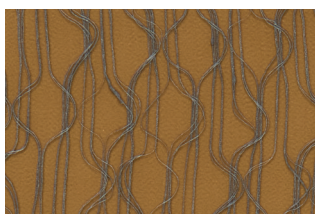
Whispering Dove



Passing Clouds



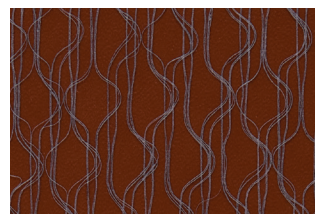
Champagne Brunch



Harvest Gold



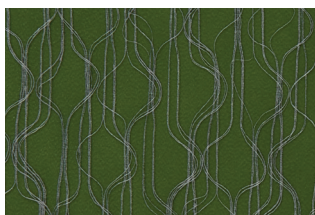
Blushing Moon



Copper Horizon



Cucumber Mist



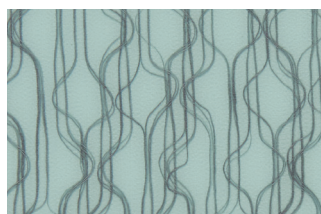
Baja Basil



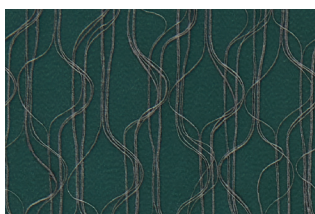
Skipping Pebbles



Pebbled Beach



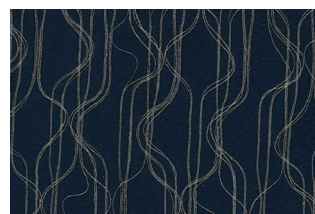
Sea Glass



Waters Edge



Raindrop Dance



Eve of Indigo



Pattern Orientation  
*Pattern enlarged to show detail.*

Pattern runs parallel to the long edge of the sheet.