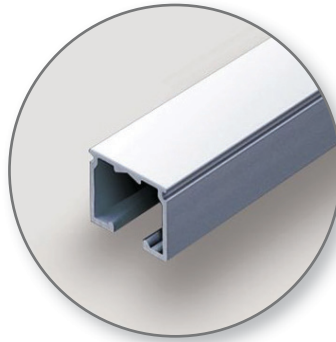


Narrowline Track



Learn More →



Our Narrowline 6062 model is a standard dual-channel extruded aluminum cubicle track. Regardless of application, CS tracks are built to last.

Advantages

- Manufactured from high-quality extruded aluminum 6063-T5
- Can be straight or radiused
- Surface or suspended mount from grid or hard surface ceiling
- Modern, more subtle appearance
- Smooth, snag-free operation for easy use
- Customizable to meet endless project requirements

Applications

- Patient rooms
- Emergency rooms
- Isolation areas
- Clinical areas

Warranty

- One-Year Manufacturer's Warranty

Product Details

- 29/32" (23.02mm) wide x 11/16" (17.5mm) high .060" (1.52mm) thickness
- Continuous radius bends available in 36" (914.4mm) & up
- Suspended track mount available up to 20' (6.09m) high
- Radius bends of 12" (304.8mm), 18" (457.2mm), 24" (609.6mm), and 30" (762mm) available

Finish Options



Anodized Aluminum White Powder Coat

Custom powder coat options available.

Please refer to *Privacy Curtains + Track Accessories product sheet* for full list of options.

