

PediTred®

Installation Instructions

PediTred® LP G3 with Level Base Frame

General Information

Open the pack list on the crate's exterior. Locate the shop drawings and installation instruction inside the box. Review contents and make sure all parts are present. For a rectangular installation, the pack list will include the number of modules and frame pieces. For odd-shaped installations, a drawing will be supplied identifying the module layout in numbered sequence.

If you discover that material is missing or defective, contact our customer service department immediately: **800.233.8493**

Important Notes – Do Not Overlook

Prior to installation, ensure that the material is stored indoors and has acclimated to the environment's temperature for 24 hours.

Assess the site condition prior to installation ensuring the recess is:

- Free of debris and moisture
- The correct depth throughout
- Smooth and flat

High spots should be ground down. Low spots should be filled with a self-leveling grout. The side walls of the recess should also be checked for plumb and defects as this could affect the frame installation (if applicable). If these conditions have been met, you can begin the installation.

Tools Required

- Level
- Rubber mallet
- Masonary drill bit: 5/32"
- Flathead screwdriver
- #2 Phillips-head screwdriver
- Tape measure
- Carpenter's pencil or marker
- Utility knife
- Shop vacuum
- PPE (gloves, glasses, ear protection, etc.)
- Trowel

Installation Instructions



1. Start by dry fitting all frame pieces within the area and use a tape measure to ensure a proper fit. For odd-shaped layouts, match frame tags to the drawing on the pack list.



2. Using a straight edge, ensure the top frame edge is flush with the surrounding floor surface. Shim frame every 24" if necessary to achieve required height.

PediTred® LP G3 with Level Base Frame



3. Using the 5/32" masonry bit, drill into the concrete 24" on center. Fasten the frame with the supplied masonry anchors using a #2 Phillips-head screwdriver.



4. To make the subfloor level with the bottom frame leg, use nonshrink grout and trowel flush with the top of the bottom leg of the level base frame.



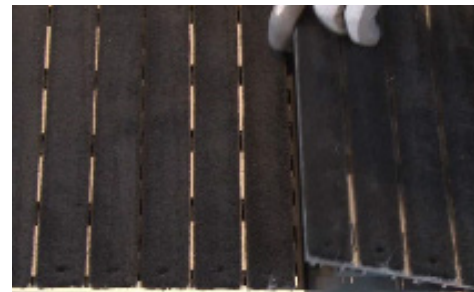
5. The recess should be smooth and flat when complete.



6. Use a rag to clean the excess grouting from the top of the frame leg. **Allow 24 hours for the grout to dry** before continuing with the installation.



7. Place modules in proper place as shown on the shop drawings.

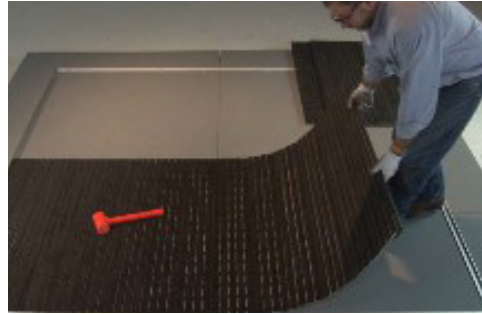


8. Join modules together by placing the aluminum foot into the black connector.

PediTred® LP G3 with Level Base Frame



9. Use a rubber mallet to join the foot into the connector.



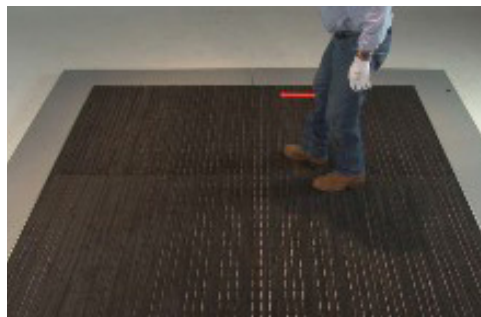
10. Continue to install the remaining modules.



11. The end trim is shipped oversized to allow for contraction. Cut the end trim flush to the adjacent rail using a utility knife.



12. For proper fit, the end trim can be cut in any of the grooves that are spaced 1/8" apart using a sharp utility knife. Score several times to cut.



13. Make final adjustments for rail alignment.



14. **Care & Maintenance:** Clean the unit with a vacuum.

PediTred® LP G3 with Level Base Frame



15. If construction is to continue in the building, protect the unit with plywood sheathing.



16. **Care & Maintenance:** to properly clean underneath the grid and avoid rail damage, roll back the grid edge to the 12th rail. Continue to roll back the grid holding that diameter.