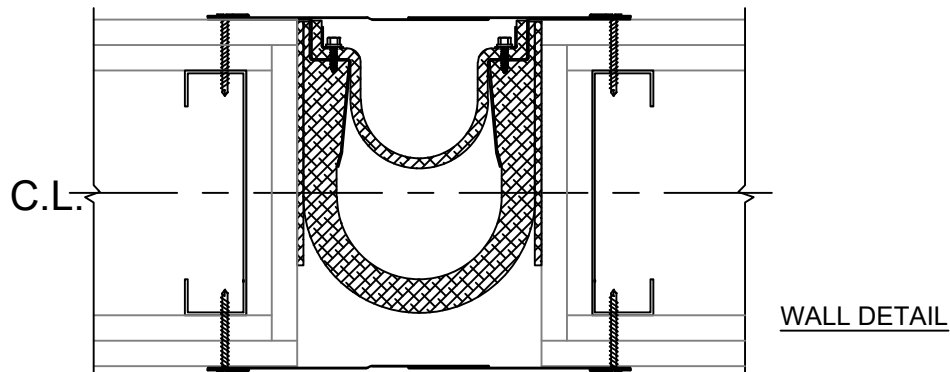
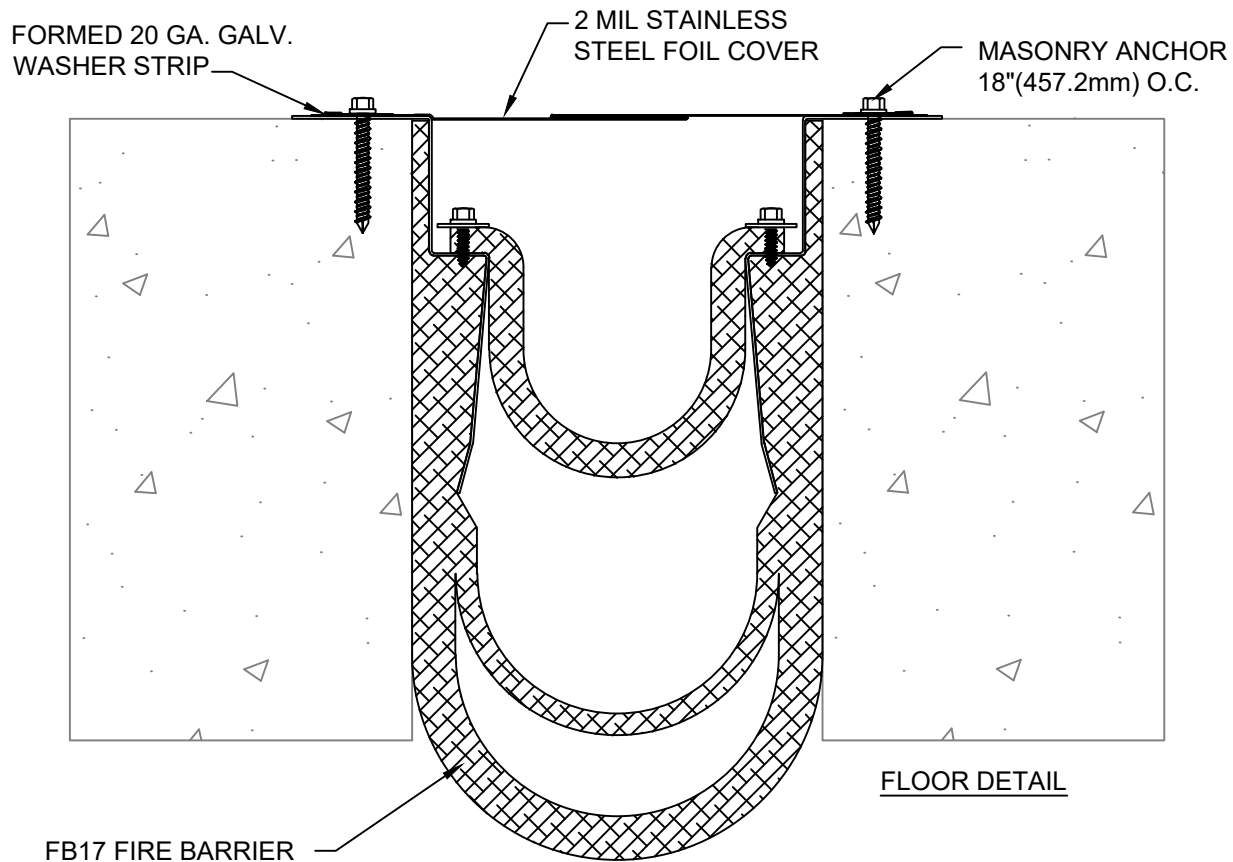


SSF WITH FB17 FIRE BARRIER INSTALLATION INSTRUCTIONS



IMPORTANT INFORMATION

Prior to the commencement of Installation, all materials **MUST** be inspected for Damage. Any damage must be reported to CONSTRUCTION SPECIALTIES, INC., as soon as possible, so that replacement materials may be furnished without delay.

All work must be completed as per Architect's Approved "Shop Drawings", and in accordance with these Installation Instructions. When installation is complete, all materials must be protected from damage until the Architect's FINAL INSPECTION.

All materials should be arranged in the order that they are to be installed. All hardware required for each portion of the work should be placed with the appropriate materials.

Please review all Approved Shop Drawings and this Document to familiarize yourself with all the details and components of this assembly.

IMPORTANT:

READ THROUGH ALL INSTRUCTIONS PRIOR TO STARTING INSTALLATION

3/12/19



Construction Specialties™

6696 Route 405 Highway, Muncy PA 17756

Doc# 3002283-8493, Fax (570) 546-5169, www.c-sgroup.com

Issue Date: 03/12/19

This document is the property of Construction Specialties, Inc. and contains CONFIDENTIAL PROPRIETARY INFORMATION that is not to be disclosed to third parties and is not to be used without approval in writing from Construction Specialties, Inc.

Rev Date: N/A

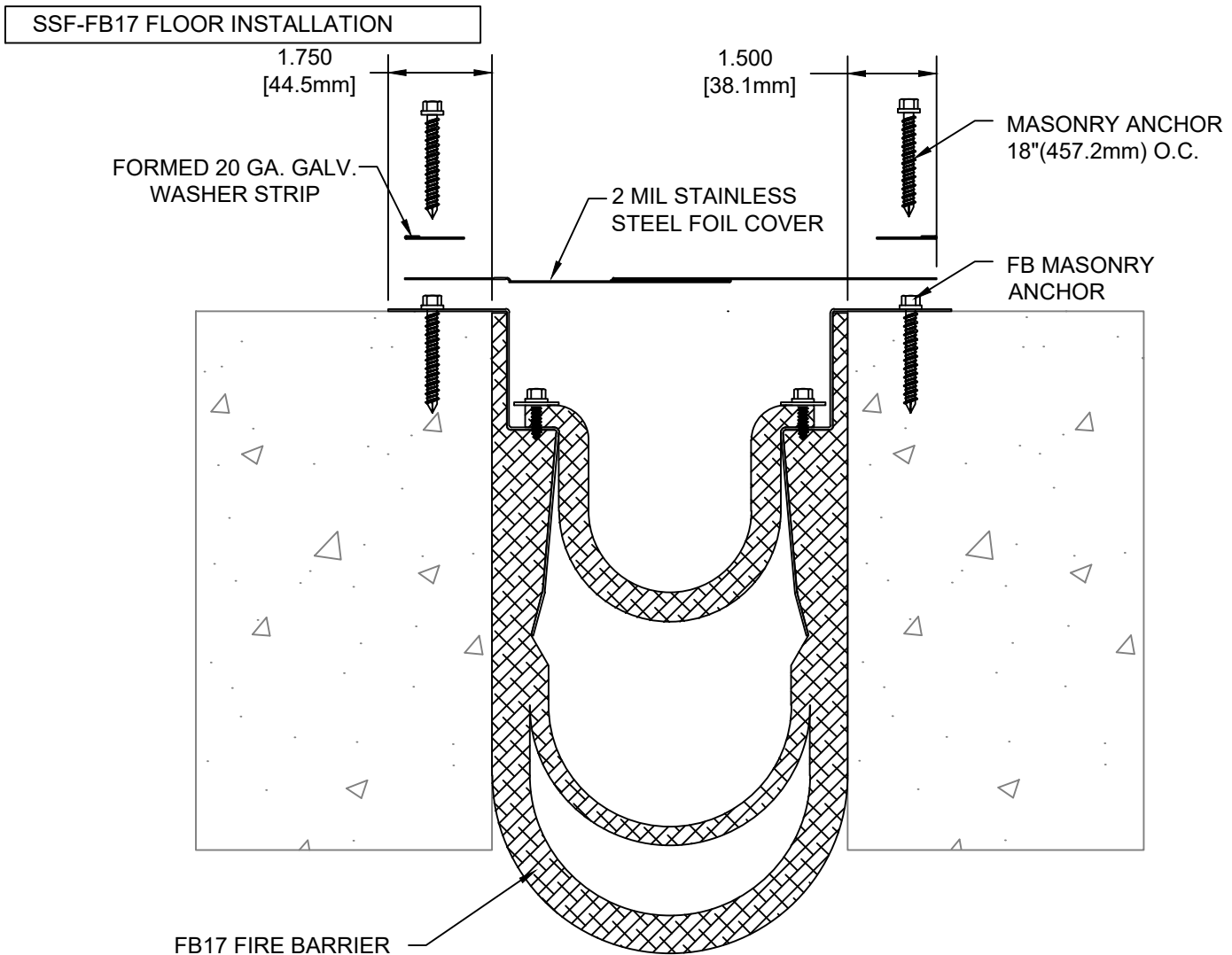
Notes:

Before beginning installation, review the architectural drawings and approved Construction Specialties Inc. shop drawings to familiarize yourself with the joint cover models and locations.

Check all of the joint cover components to confirm that the correct joint cover model and size have been received. Also, check for materials that may have been damaged during shipping. Report all incorrect and/or damaged components to C/S at 800-233-8493.

Read through all the steps of these instructions prior to beginning work.

STEP 1



Step 1:

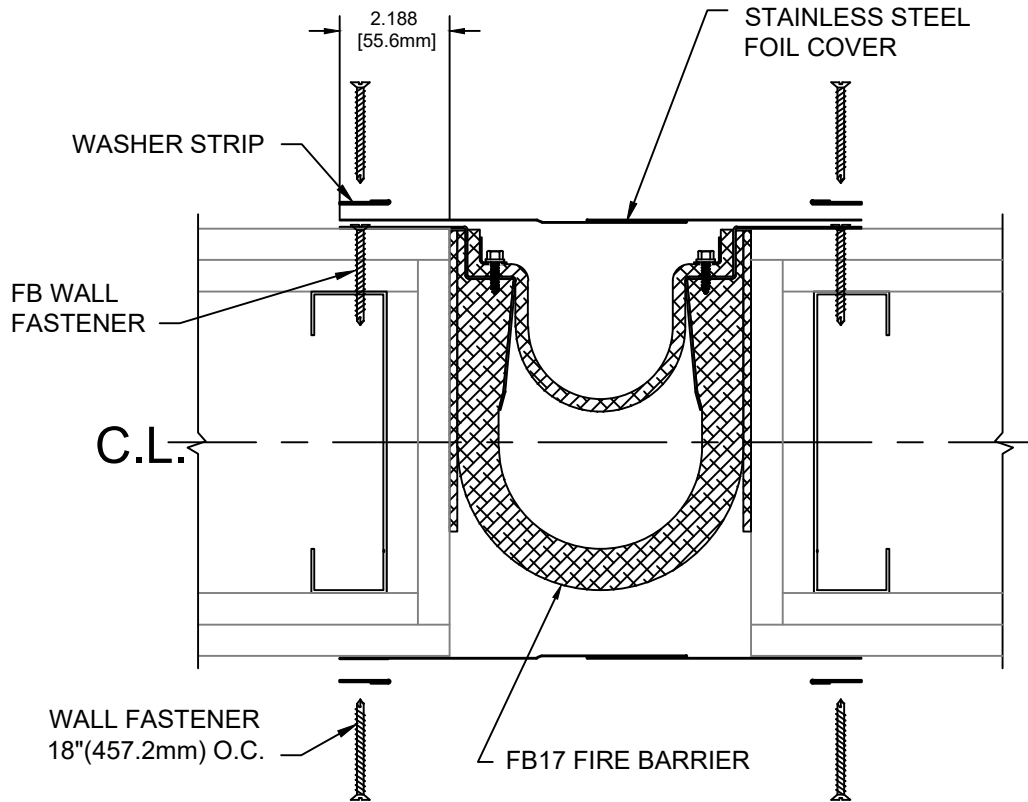
- 1.1) Begin installation of Stainless Steel Foil Cover by placing a length of the Cover over the joint. Cut the Stainless Steel Foil Cover to length as needed.
- 1.2) Reposition Stainless Steel Foil Cover over the joint and align one edge of the Stainless Steel Foil Cover 1 1/2" from the edge of the joint (the edge of the Stainless Steel Foil Cover and the edge of the joint should be parallel).
- 1.3) Attach the Stainless Steel Foil Cover and Washer Strip using the CS supplied masonry anchor per manufacturer's guidelines. Position the Washer Strip over the installed fasteners of the fire barrier. Stagger and drill the masonry anchor holes of the Washer Strip between the already installed fire barrier fasteners, 18" max. o.c.

Note: Do not align the edge of the Stainless Steel Foil with the edge of the FB17 Flange.

- 1.4) Repeat this installation procedure for opposite side of the joint and for any additional lengths of Stainless Steel Foil

STEP 2

SSF-FB17 WALL INSTALLATION



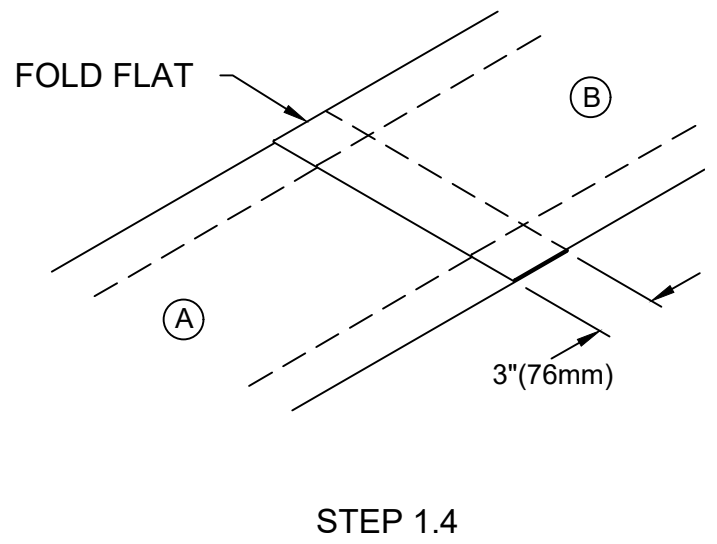
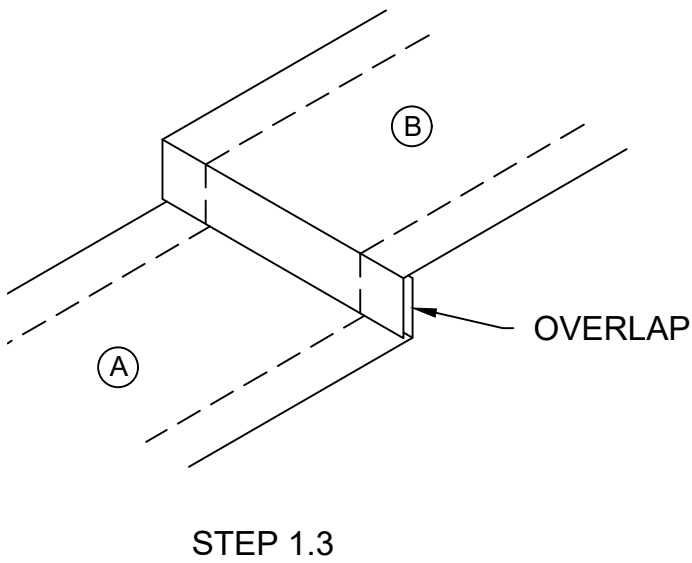
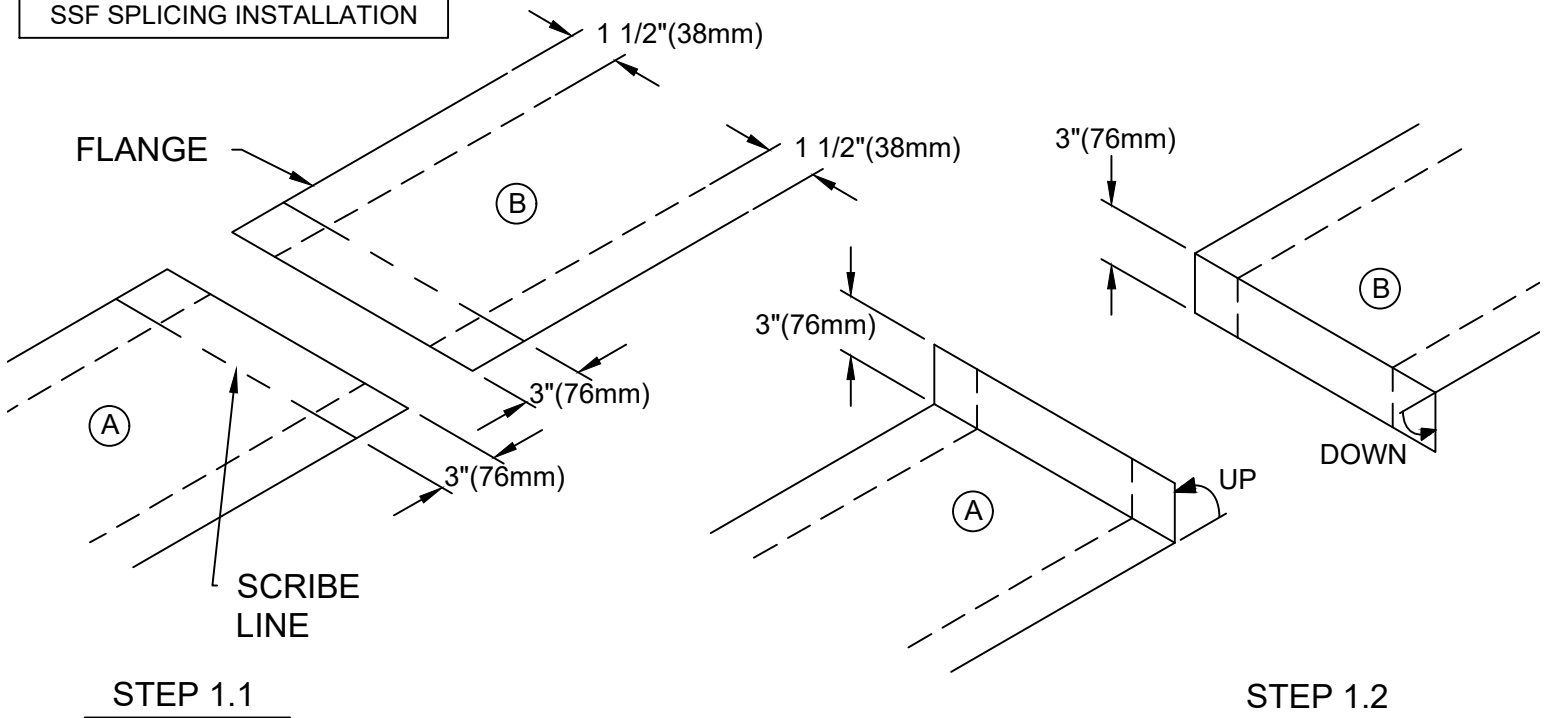
Step 2:

Note: The Stainless Steel Foil Cover is to be installed at wall joint applications extending from the finished ceiling (where the architectural joint cover ends) to the underside of the deck above.

- 2.1) Begin installation of Stainless Steel Foil Cover by placing a length of the Cover over the joint. Cut the Stainless Steel Foil Cover to length as needed.
- 2.2) Measure 2 3/16" from edge of joint and align edge of Stainless Steel Foil Cover with the surface mounted wall fire barrier galvanized flange edge. Fire Barrier with Low Profile Flanges measure 2 3/16" over from joint edge and snap a chalk line parallel to the joint edge.
- 2.3) Position the Stainless Steel Foil Cover over the joint and align one edge of the Stainless Steel Foil Cover with the galvanized flange edge or chalk line. Masking tape can be used to temporarily hold the Foil in position.
- 2.4) Install the Stainless Steel Foil Cover and Washer Strip using the supplied wall fasteners at 18" O.C. per manufacturer's guidelines. Position the supplied washer strips over the installed fasteners of the fire barrier. Stagger and drill the fastener holes of the Washer Strip between the already installed fire barrier fasteners.
- 2.4) Repeat this installation procedure for opposite side of the joint and for all additional lengths of Stainless Steel Foil Cover.

SPLICING STAINLESS STEEL FOIL COVER

SSF SPLICING INSTALLATION



Splicing Stainless Steel Foil Cover:

Note: When longer lengths of Stainless Steel Foil Cover is required, lengths may be spliced together as instructed. To create a Field Splice, the two lengths of Stainless Steel Foil it may be best to leave extra and trim to the run length after the splice is created.

- 1.1) Position the ends of the two lengths of Stainless Steel Foil to be spliced near each other. Measure in 3" (76mm) from the end and scribe a folding line on the surface of each piece.
- 1.2) Using a straight edge as a guide, fold the end of length "A" up at 90° and the end of length of "B" down at 90°.
- 1.3) Place piece "B" over piece "A" so the folded, 3" (76mm) lengths overlap.
- 1.4) Fold the overlapping 3" (76mm) legs of both pieces flat so that they interlock to form an overlapping splice