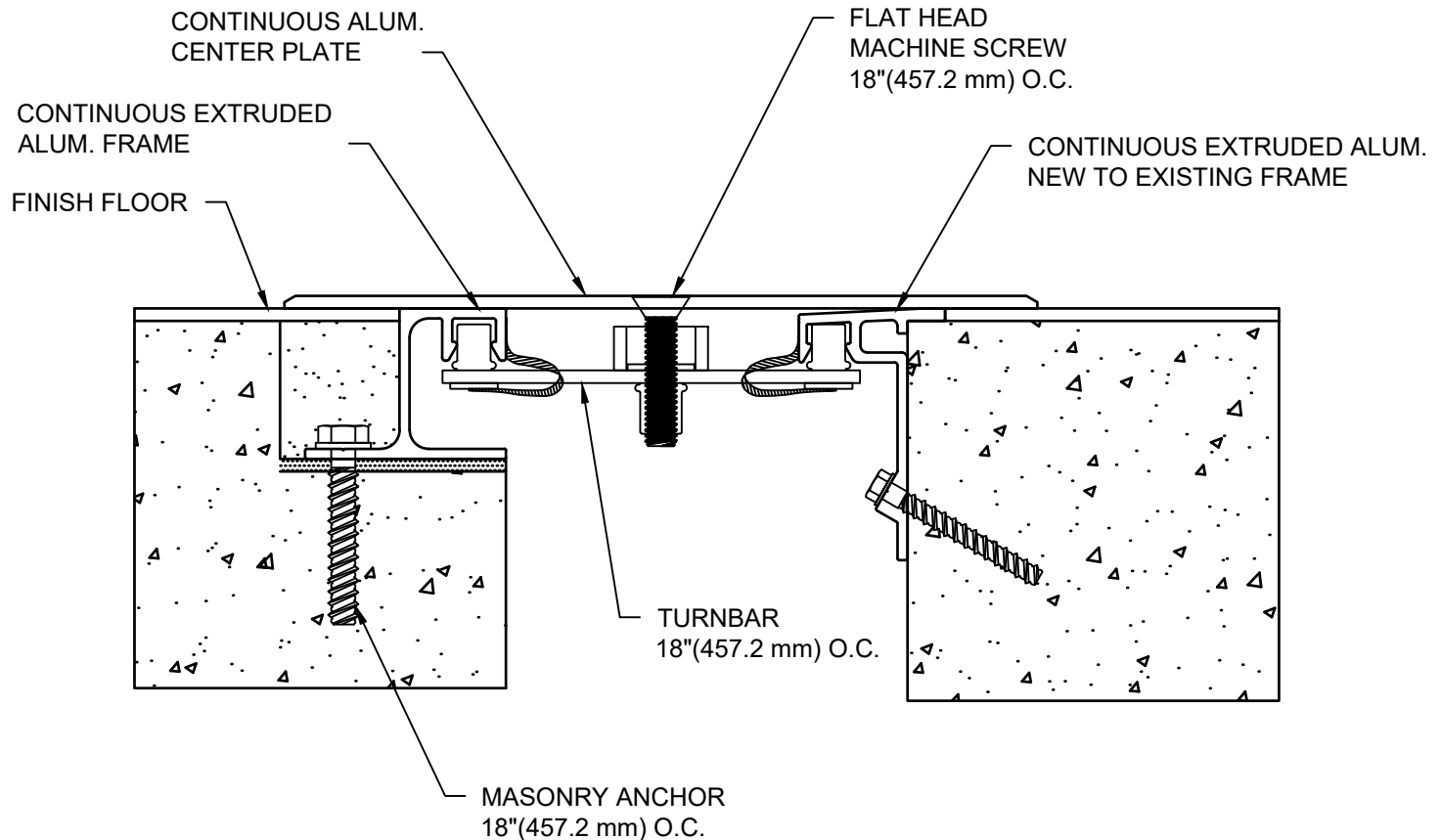


# MODEL SJPM-100 THRU 300 INSTALLATION INSTRUCTIONS



## IMPORTANT INFORMATION

Prior to the commencement of Installation, all materials **MUST** be inspected for Damage. Any damage must be reported to CONSTRUCTION SPECIALTIES, INC., as soon as possible, so that replacement materials may be furnished without delay.

All work must be completed as per Architect's Approved "Shop Drawings", and in accordance with these Installation Instructions. When installation is complete, all materials must be protected from damage until the Architect's FINAL INSPECTION.

All materials should be arranged in the order that they are to be installed. All hardware required for each portion of the work should be placed with the appropriate materials.

Please review all Approved Shop Drawings and this Document to familiarize yourself with all the details and components of this assembly.

## IMPORTANT:

**READ THROUGH ALL INSTRUCTIONS PRIOR TO STARTING INSTALLATION**

4/2/25



**Construction Specialties™**

6696 Route 405 Highway, Muncy PA 17756  
(800) 233-8493 • Fax (570) 546-5169 • [www.CSgroup.com](http://www.CSgroup.com)

This document is the property of Construction Specialties, Inc. and contains CONFIDENTIAL PROPRIETARY INFORMATION that is not to be disclosed to third parties and is not to be used without approval in writing from Construction Specialties, Inc.

### Notes

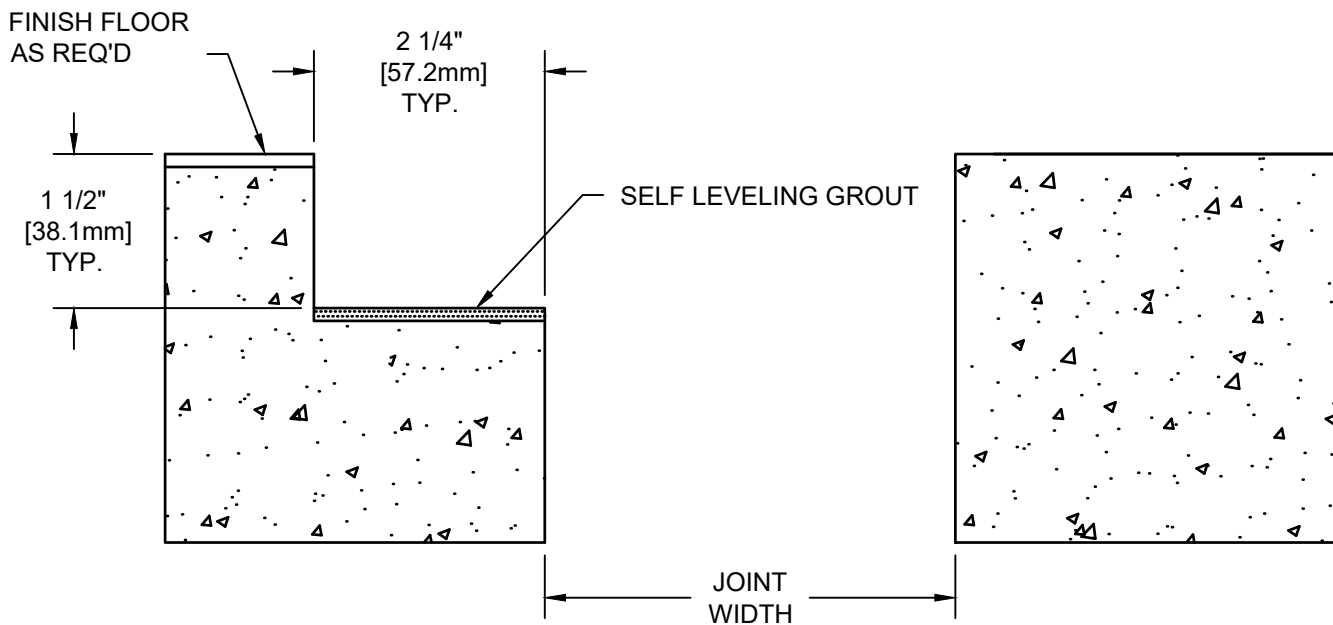
Before beginning installation, review the architectural drawings and approved Construction Specialties Inc. shop drawings to familiarize yourself with the appropriate joint cover models and locations.

Check all of the joint cover components to confirm that the correct joint cover model and size have been received. Also, check for materials that may have been damaged during shipping. Report all incorrect and/or damaged components to CS at 800-233-8493.

Read through all the steps of these instructions prior to beginning work.

# STEP 1

## PREPARE BLOCKOUTS

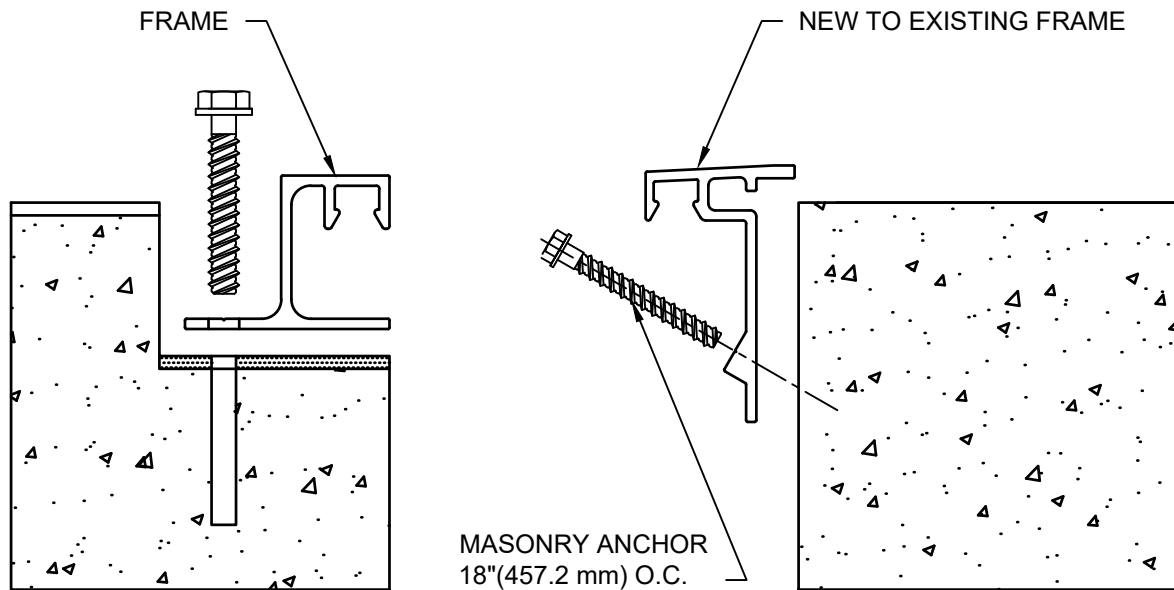


1.1) The blockouts must be prepared to receive the joint cover.

- For Model SJP-M the blockout depth will typically be 1-1/2"(38.1mm). However, the depth may be adjusted as needed to accommodate a floor finish material when required and as indicated on the architectural drawings and/or CS shop drawings.
- It is recommended that the blockout be formed a minimum of 1/8" deeper to allow the blockouts to be leveled for installation of the joint cover.
- Apply a self leveling grout to the base of the blockouts to provide a continuous, solid, flat and level base for the joint cover. (Note: The blockouts must be level across the width of the joint.)

# STEP 2

## BASE FRAME INSTALLATION



### Note:

If a CS Fire Barrier is to be installed in the joint, please review the Fire Barrier Installation Instructions supplied, and if required install the Fire Barrier **BEFORE** installation of CS Seismic Expansion Joint aluminum frames. If a Vapor Barrier is to be installed in the joint, please review the Vapor Barrier Installation Instructions supplied, and if required install the Vapor Barrier **BEFORE** installation of CS Seismic Expansion Joint Aluminum Frames.

- 2.1) Begin installation of the New to Existing (N-E) Frame by placing a length of the N-E Frame on the corner of the floor slab as shown above. The N-E Frame is to sit level, flat and parallel to the edge of the joint.
- 2.2) Using the N-E Frame as a template, mark the locations of the anchor bolts.
- 2.3) Remove the N-E Frame and drill the holes for the anchor bolts. Note: The holes are to be drilled with the appropriate size and type of drill bit as indicated by the manufacturer of the anchor bolts.
- 2.4) Reposition and anchor the N-E Frame to the slab with the CS supplied anchor bolts following the manufacturer's guidelines.
- 2.5) Repeat for additional lengths of N-E Frame as needed.
- 2.6) Begin installation of the Frame by placing a length of Frame into the blockout. Cut the Frame to length as needed. The Frame is to sit level, flat and parallel to the edge of the joint. The Frame should not overhang the edge of the slab or sit above the top surface of the slab.
- 2.7) Using the Frame as a template, mark the locations in the blockout for the anchor bolts. Remove the Frame and drill the holes for the anchor bolts. The holes are to be drilled with the appropriate size and type of drill bit as indicated by the manufacturer of the anchor bolts, as supplied by CS.
- 2.8) Reposition the Frame and anchor the Frame to the slab with the CS supplied anchor bolts following the manufacturer's guidelines.
- 2.9) Repeat the installation procedures for any additional lengths of Frame.
- 2.10) Apply grout in blockout of the expansion joint using an epoxy cement grout. The grout must be poured level with the blockout.

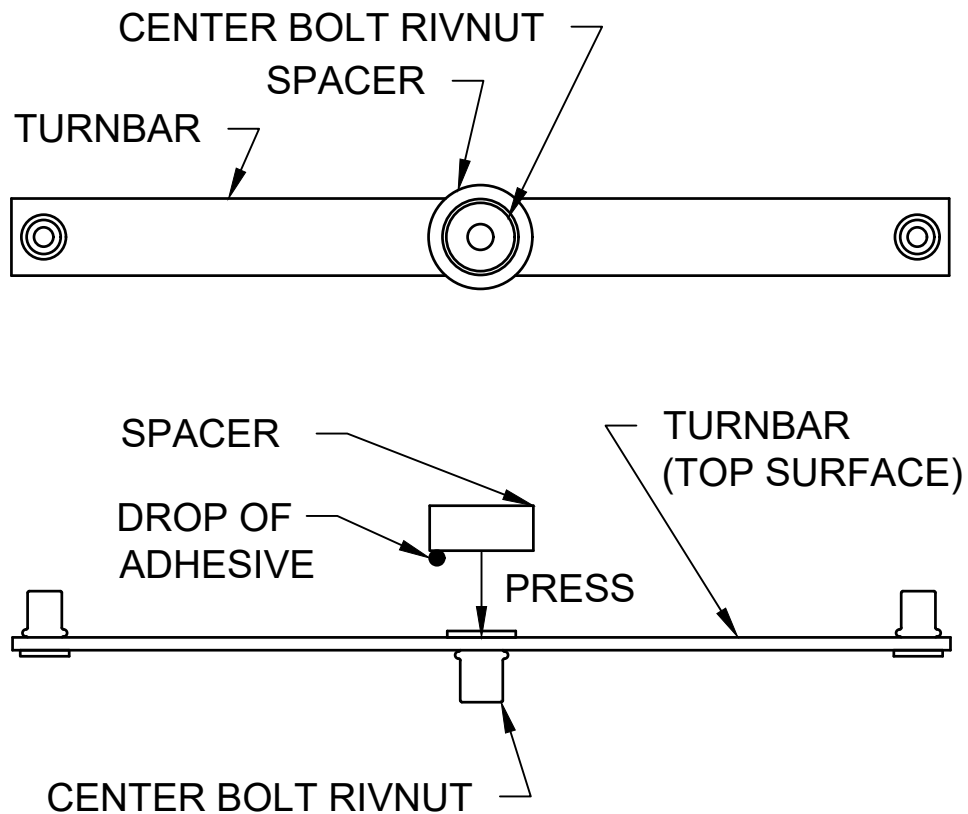
# STEP 3

## CENTER PLATE LENGTH

- 3.1) Prepare the Center Plate for installation by first cutting the plate to length as needed.

# STEP 4

## SPACER INSTALLATION

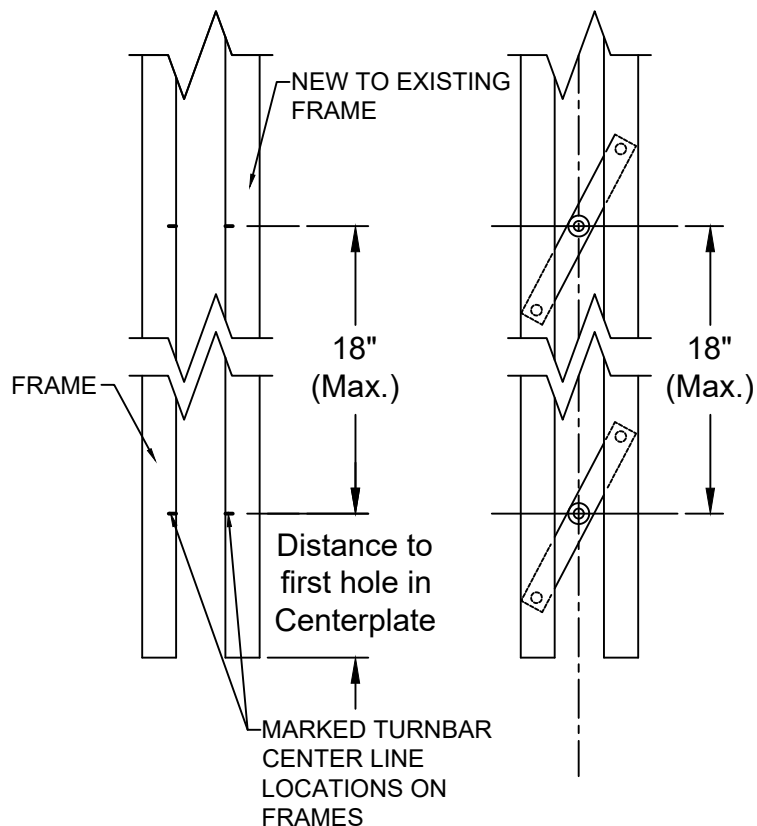
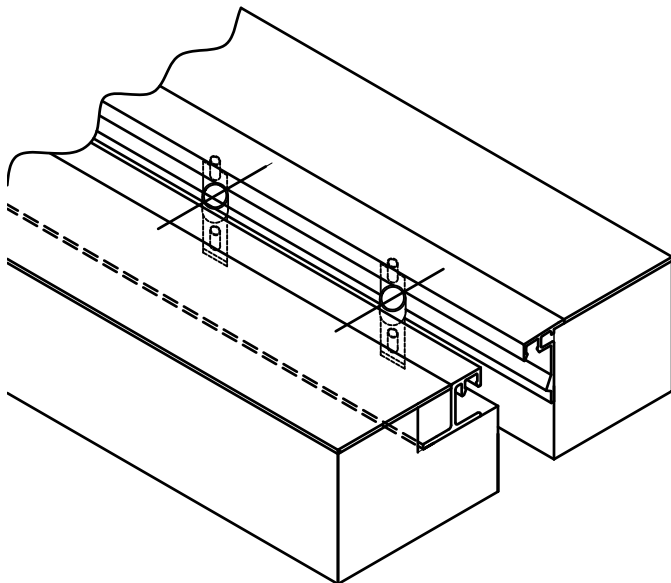


Note: A Spacer must be placed between the Turnbar and the underside (or backside) of the Cover Plate. The Spacer is used to prevent excess bowing of the Turnbars when the center bolt is tightened. (Some bowing of the Turnbars is required to apply the holding force on the Cover Plate.)

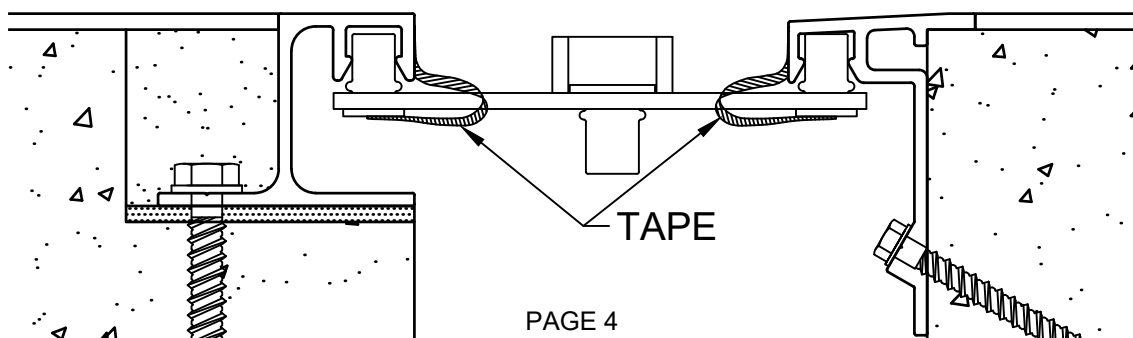
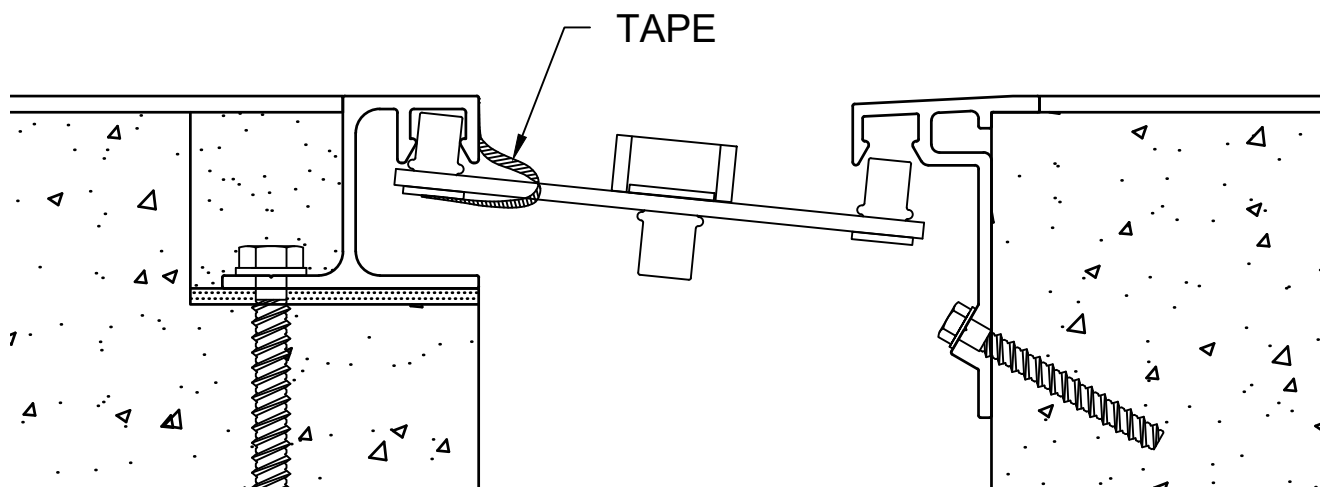
- 4.1) Place a small drop of "super glue" adhesive (not supplied) onto one end of the Spacer.
- 4.2) Position the end of the Spacer with the adhesive against the top surface of the Turnbar, centered over the flat head portion of the Center Bolt Rivnut (see details above).
- 4.3) Press firmly for a few seconds until the Spacer is bonded to the Turnbar.

# STEP 5

## TURNBAR INSTALLATION

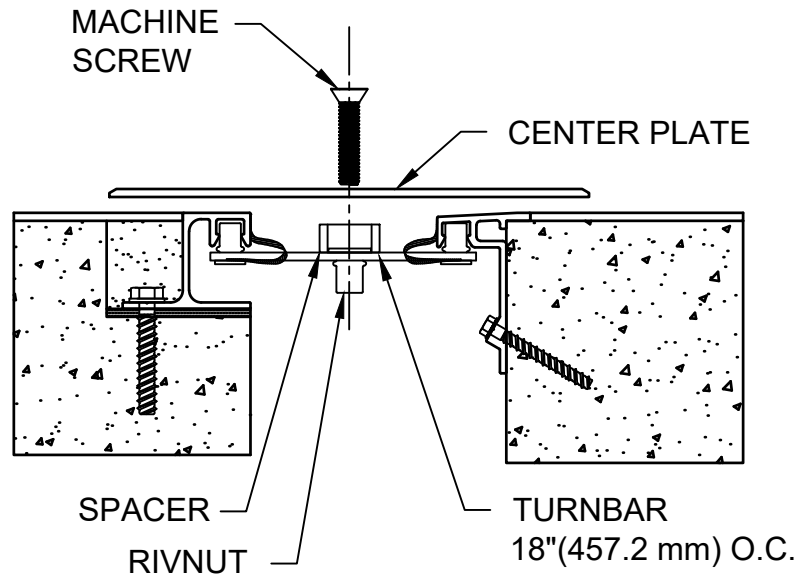


- 5.1) Using the center plate drilled hole locations, measure and mark the Turnbar Centerline locations, on each side of the frame. A maximum of 18" o.c. between turnbar centerlines.
- 5.2) Place Turnbar pivot pins at each end into the pivot pin receivers of the frame and align Turnbar centerline with the marked locations on the frame. (Note the orientation of the Turnbar in the detail above. Install Turnbar when tightened will rotate in a clock wise motion.) Tape Turnbar in place by attaching tape from the underside of turnbar up and around to the face of the frame. ( See details below) Remove any tape ends that extend above the frame.
- 5.3) Repeat the above step taping each end of the Turnbar to the frame to hold in place at each Turnbar centerline location on the frames.



# STEP 6

## CENTER PLATE INSTALLATION

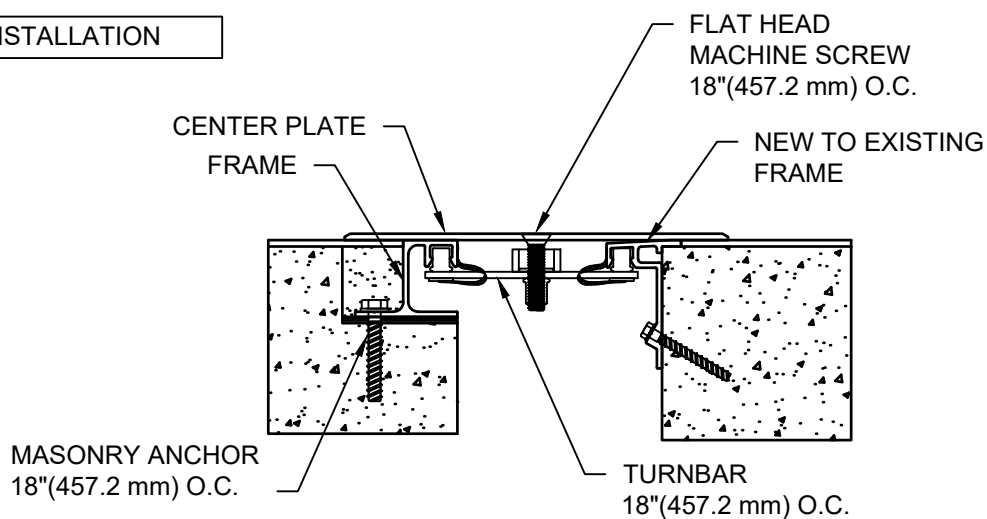


Note: Install floor finish prior to installation of Center Plate.

- 6.1) Place the Center Plate over the joint and align the drilled holes with the Turnbar centerlines. Place machine screw into each hole locations tighten only enough to catch the Turnbars. Repeat until all machine screws are in place, then progressively tighten all machine screws until the Center Plate is securely fastened.

# STEP 7

## COMPLETE INSTALLATION



- 7.1) When installation of the Joint Cover has been completed, remove all residue and foreign matter from the area and joint cover.
- 7.2) Clean the CS Joint Cover and adjoining surfaces with proper cleaner.
- 7.3) Protect the Joint Cover until the Architect's final inspection.