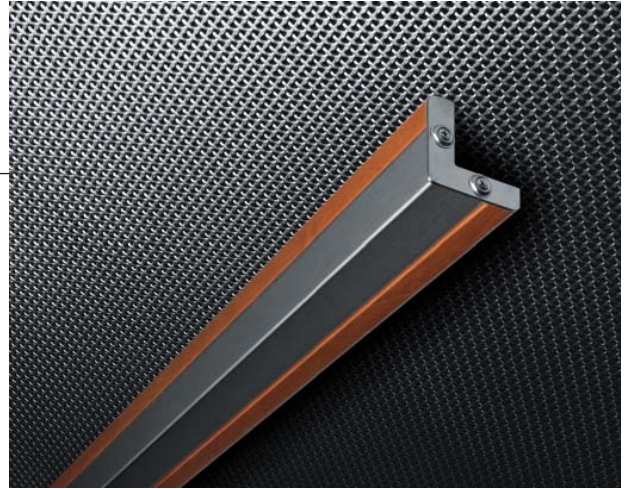


SMWS-20 and SMWS-20M

Product Data

A surface mounted Renaissance™ wood corner guard featuring 2 3/4" legs and a stainless steel accent.



Real Wood	Real Metal	Powder Coat
-----------	------------	-------------

Technical Data:

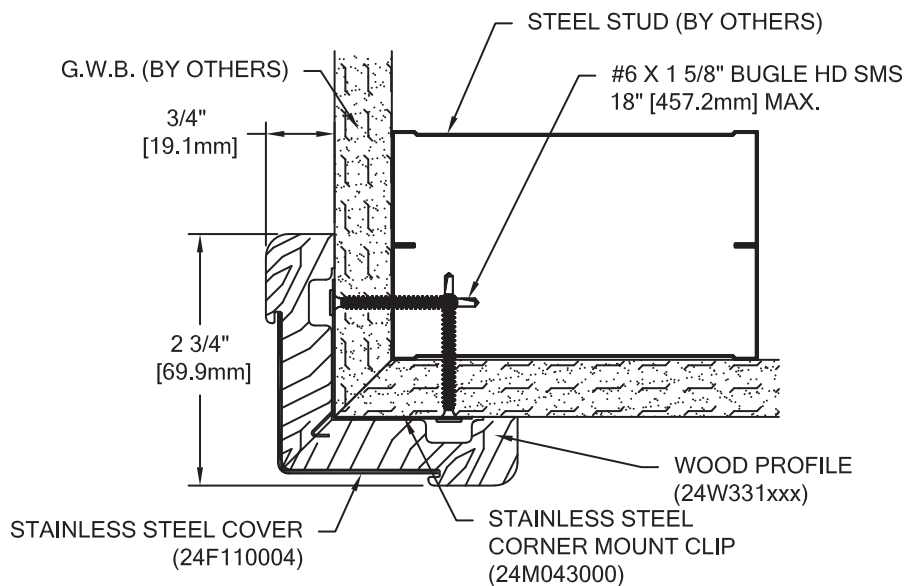
- 2 3/4" (69.9mm) leg
- 3/4" (19.1mm) wall offset
- 1 3/4" x 1 3/4" (44.5mm x 44.5mm) recessed stainless steel accent with 1/8" (2.8mm) radius
- Supplied to field verified dimensions only with factory-finished stainless steel end caps with black inserts
- Maximum 10' (6.1m) length
- 1" (25.4mm) wide stainless steel mounting clips

Features:

- Tested in accordance with ASTM E84 Class A/1 fire characteristics
- CA 01350 protocol for low VOC
- 5 year product warranty
- Factory-finished wood corner guard
- Low VOC water based wood finishes

Options:

- SMWS-20M - 2 3/4" (69.9mm) leg - odd angles available between 45-179 degrees (135 degree only for metal cap)
- Custom wood finishes
- FSC certified wood
- SMWS-20W - factory-finished wood ends
- SMWS-20WM - powder coat finishes available



Similar Models:

- SMWS-10 - 2 3/4" (69.9mm) leg; 31/32" (24.5mm) radius bullnose stainless steel accent

SUGGESTED SPECIFICATIONS SECTION 10 26 00

CS Acrovyn Models SMWS-20 and SMWS-20M

Part 1 - General

1.01 Summary

A. This section includes the following types of wall protection systems:

1. Corner Guards

B. Related sections: The following sections contain requirements related to this section:

1. Handrails, Bumper Guards, Crash Rails, Accent Rails, Wall Covering, Wall Panels, Door Protection; refer to section 10 26 00 "Wall and Door Protection"
2. Blocking in walls for fasteners; refer to section 09 22 00 "Supports for Plaster and Gypsum Board"

1.02 References

- A. National codes (IBC, UBC, SBCCI and BOCA)
- B. American Society for Testing and Materials (ASTM)
- C. California 01350 specification

1.03 Submittals

General: Submit the following in accordance with conditions of contract and Division 1 specification section 01 33 00 "Submittal Procedures":

- A. Product data and detailed specifications for each system component and installation accessory required, including installation methods for each type of substrate.
- B. Shop drawings showing locations, extent and installation details of corner guards. Show methods of attachment to adjoining construction.
- C. Samples for verification purposes: Submit the following samples, as proposed for this work, for verification of color, finish and alignment:
 1. 12" (304.8mm) long sample of each model specified.
- D. Maintenance data for wall protection system components for inclusion in the operating and maintenance manuals specified in Division 1.

1.04 Quality Assurance

- A. Installer qualifications: Engage an installer who has no less than 3 years experience in installation of systems similar in complexity to those required for this project.
- B. Manufacturer's qualifications: Not less than 5 years experience in the production of specified products and a record of successful in-service performance.
- C. Code compliance: Assemblies should conform to all applicable codes including IBC, UBC, SBCCI, BOCA and CA 01350.
- D. Single source responsibility: Provide all components of the wall protection system manufactured by the same company to ensure compatibility of color, texture and physical properties.

1.05 Delivery, Storage and Handling

- A. Deliver materials to the project site in unopened original factory packaging clearly labeled to show manufacturer.
- B. Store materials in original, undamaged packaging in a cool, dry place out of direct sunlight and exposure to the elements. A minimum room temperature of 40°F (4°C) and a maximum of 100°F (38°C) should be maintained.
- C. Material must be stored flat.

1.06 Project Conditions

- A. Materials must be acclimated in an environment of 65°-75°F (18°-24°C) for at least 24 hours prior to beginning the installation.
- B. Installation areas must be enclosed and weatherproofed before installation commences.

Part 2 - Products

2.01 Manufacturers

A. Interior surface protection products specified herein and included on the submittal drawings shall be manufactured by Construction Specialties, Inc.

2.02 Materials

- A. Solid Wood Components: Shall be manufactured from plain sawn, FAS grade hardwood, kiln dried to a moisture content of 6% to 10%.
- B. Stainless steel components shall be fabricated from type 304 stainless steel with a #4 satin finish.
- C. Fasteners: All necessary fasteners to be supplied by the manufacturer.

2.03 Corner Guards

- A. Wood/Stainless Steel Corner Guards to be CS Acrovyn: Surface mounted assembly consisting of wood corner guard with stainless steel facing. All hardware shall be appropriate for wall construction.
 1. Model SMWS-20 90° wood corner guard with 2 3/4" (69.9mm) legs and recessed stainless steel cover. Furnished cut-to-size only with standard stainless steel end caps or optional wood end caps; both factory installed with Black horizontal reveals to allow for proper expansion and contraction of materials. Specify SMWS-20M for odd degree corners; stainless steel cap available for 135° corners only. Select from one of Renaissance™ wood species and finishes. FSC certified wood can be specified. Custom woods and finishes available. Optional powder coat finish available for stainless steel components; select from standard powder coat finishes.

2.04 Fabrication

- A. General: Fabricate wall protection systems to comply with requirements indicated for design, dimensions, detail, finish and member sizes. All based upon required field verified dimensions.
- B. Fabricate components with wood joints lightly chamfered.
- C. Provide surfaces free of chipping, dents and other imperfections.

2.05 Finishes

- A. All wood components shall be factory finished. Wood components to be final coated with water base, high solids, clear lacquer using a two coat process. Finish shall be in accordance with specified AWI finish system. Coverage shall be a minimum of 3-5 mils. Gloss shall be measured on 60° gloss meter as per ASTM D523.
- B. General: Comply with NAAMM "Metal Finishes Manual" for recommendations relative to applications and designations of finishes.

Part 3 - Execution

3.01 Examination

A. Verification of conditions: Examine areas and conditions under which work is to be performed and identify conditions detrimental to proper or timely completion.

1. Do not proceed until unsatisfactory conditions have been corrected.

3.02 Preparation

- A. Surface preparation: Prior to installation, clean substrate to remove dirt, debris and loose particles. Perform additional preparation procedures as required by manufacturer's instructions.
- B. Protection: Take all necessary steps to prevent damage to material during installation as required in manufacturer's installation instructions.

3.03 Installation

- A. Install the work of this section in strict accordance with the manufacturer's recommendations and the required field verified dimensions.
- B. Use only approved mounting hardware, and locating all components firmly into position, level and plumb.
- C. Temperature at the time of installation must be between 65°-75°F (18°-24°C) and be maintained for at least 48 hours after the installation.

3.04 Cleaning

- A. General: Immediately upon completion of installation, clean rails and accessories in accordance with manufacturer's recommended cleaning method.
- B. Remove surplus materials, rubbish and debris resulting from installation as work progresses and upon completion of work.

3.05 Protection

- A. Protect installed materials to prevent damage by other trades. Use materials that may be easily removed without leaving residue or permanent stains.