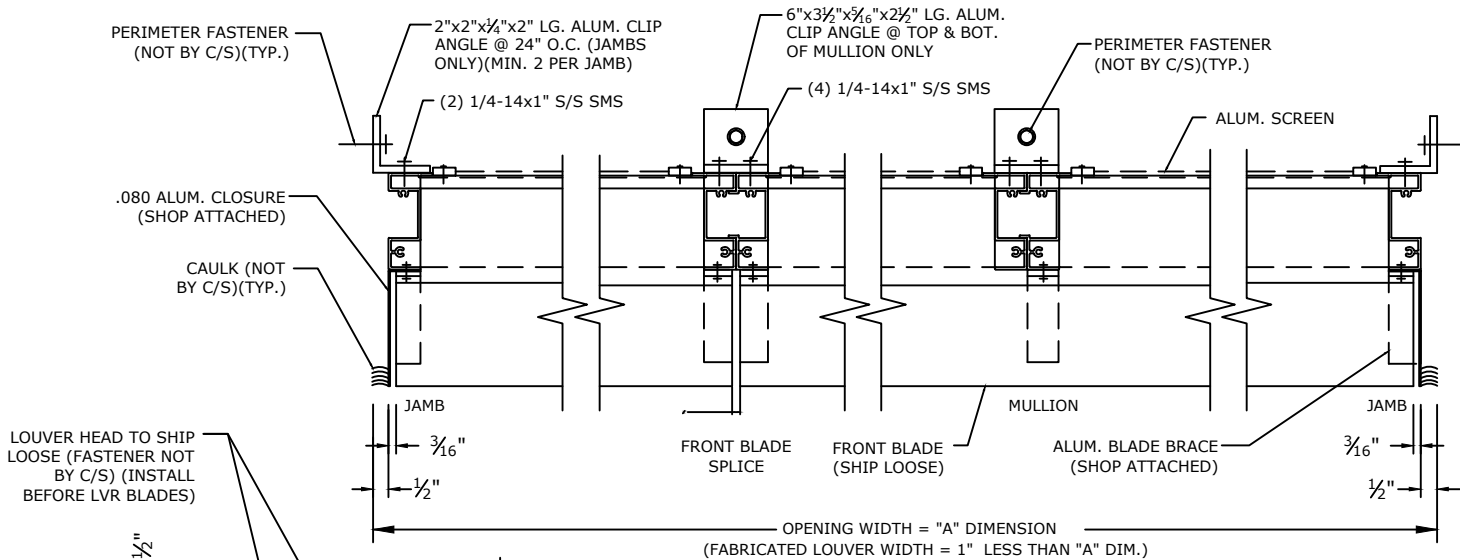
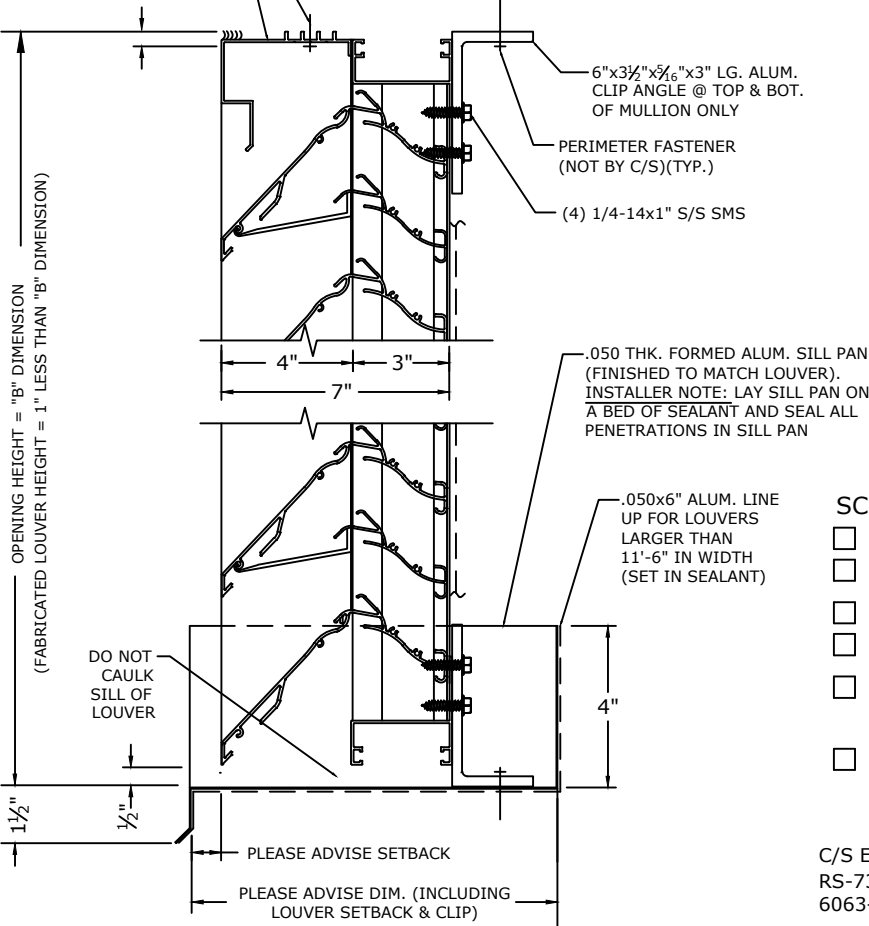


STORM RESISTANT LOUVERS MODEL RS-7305



PLAN VIEW
NTS



VERTICAL SECTION (NTS)

SCREENS

- ☐ SCREEN NOT REQUIRED
- ☐ SCREEN REQUIRED
- ☐ INTERIOR MOUNTED
- ☐ EXTERIOR MOUNTED
- ☐ BIRDSCREEN: 1/2" MESH .063 DIA. ALUM. WIRE (MILL FINISH)
- ☐ INSECT SCREEN: 18x16 ALUM. MESH (MILL FINISH)

FINISHES

- ☐ STANDARD MILL
- ☐ FLUOROPOLYMER POWDER COAT (NOT AVAILABLE IN 600XL OR 700)
- ☐ KYNAR (500),(600XL)or(700)
- ☐ (1) OF C/S STD. COLORS
- ☐ CUSTOM COLOR, C/S REQUIRES A COLOR CHIP FOR MATCHING
- ☐ BRONZE ANODIC (DARK OR MED.)
- ☐ CLEAR ANODIZE
- ☐ OTHER _____

C/S EXTRUDED ALUMINUM STORM RESISTANT LOUVER MODEL RS-7305. FRAMES AND BLADES TO BE FABRICATED FROM 6063-T6 ALLOY. ALL FASTENERS TO BE STAINLESS STEEL.

UNSUPPORTED FRONT BLADE LENGTH = @ PSF.

MARK	QTY.	"A" DIM.	"B" DIM.	NUMBER OF MULLIONS	LOUVER LOCATION	REMARKS
						CKD. BY:
Construction Specialties, Inc. 49 Meeker Avenue Cranford, New Jersey 07016 (908) 272-5200 Fax (908) 272-6038				PROJECT:	DRAWN BY:	
				CUSTOMER:	DATE:	
				ARCH'T:	DWG. NO:	
				AGENT:	SHEET OF	