

General Information

Open the pack list on the crate's exterior. Locate the shop drawings and installation instruction inside the box. Review contents and make sure all parts are present. For a rectangular installation, the pack list will include the number of modules and frame pieces. For odd-shaped installations, a drawing will be supplied identifying the module layout in numbered sequence.

If you discover that material is missing or defective, contact our customer service department immediately:
800.233.8493

Important Notes - Do Not Overlook

Prior to installation, ensure that the material is stored indoors and has acclimated to the environment's temperature for 24 hours.

Assess the site condition prior to installation ensuring the recess is:

- Free of debris and moisture
- The correct depth throughout
- Smooth and flat

High spots should be ground down. Low spots should be filled with a self-leveling grout. The side walls of the recess should also be checked for plumb and defects as this could affect the frame installation (if applicable). If these conditions have been met, you can begin the installation.

Tools Required

You will need a tape measure, drill, impact driver, 5/32" drill bit and fastener, 1/2" wrenches/sockets, lift key tool, caulk gun (for drain pan installation only) and a Phillips fastener.

Installation Instructions



1 Dry fit all frame pieces within the area and use a tape measure to ensure a proper fit. For odd-shaped layouts, match frame tags to the drawing on the pack list.



2 Using a straight edge, ensure the top frame edge is flush with the surrounding floor surface. Shim frame every 24" if necessary to achieve required height.



3 Begin by assembling the perimeter frame and internal support framing members. Rectangular unit frame pieces are marked with dimensional lengths and are installed per the shop drawings. Odd-shaped frame pieces are numbered. Their locations align with the numbered sides on the shop drawings.

Installation Instructions (continued)



4 The perimeter ledge frame has three hole locations at each frame end. The adjacent frame pieces line up with the holes and can be fastened together using the supplied hardware and a socket wrench system.



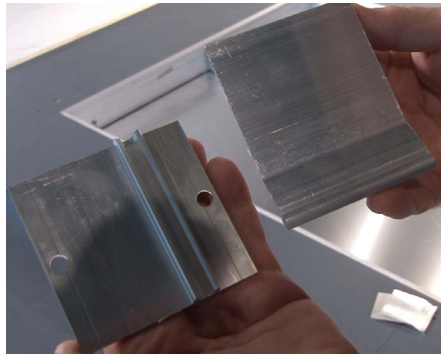
5 Repeat this process at all perimeter frame corners.



6 Install the intermediary supports, located inside the perimeter support assembly. These frames are fastened to the perimeter ledge frame using the three pre-drilled hole locations.



7 Use the same hardware as the perimeter frame. Use socket/wrench tools to secure the fasteners.



8 Shown: support clips



9 Support clips come in two pieces - one for vertical fastening to the support and one for horizontal fastening to the floor. Assemble these male and female pieces as shown.



10 To keep intermediary supports from rocking, start at the supports edge and install support clips every 24" along the support, alternating the clip location on each side of the support.



11 Place one support clip side on the floor and the other directly against the support. Use a marker to trace the support's top edge onto the clip.



12 Use a jigsaw to cut along the transferred marker line to achieve the correct support clip height.

To view details, specs and product info visit www.c-sgroup.com/efs.

For technical and design assistance call 800.233.8493

Installation Instructions (continued)



13 Use a drill to create a hole in the vertical portion of the support and the support bar behind it.



14 Use the supplied bolt, washer and nut hardware with a socket/wrench tool to fasten the vertical portion of the support clip to the support bar.



15 Using a 5/32" drill, locate the pre-drilled hole on the horizontal portion of the support clip and drill into the floor.



16 Use a driver to install the fastening hardware and secure the support clip to the floor. Clips should be installed alternating on each side of the support.



17 Repeat these steps at each clip location every 24" along the support frame.



18 Complete the perimeter frame installation. Use a drill to create a hole on the vertical side of the perimeter frame. These holes should be created every 24".



19 Fasten the perimeter frame to the perimeter concrete using the supplied hardware and a driver.



20 Grid modules can now be installed. Each grid module is labeled per the shop drawings to identify location.



21 Modules will have spacer clips attached to one side. Spacer clips should face toward adjacent modules.

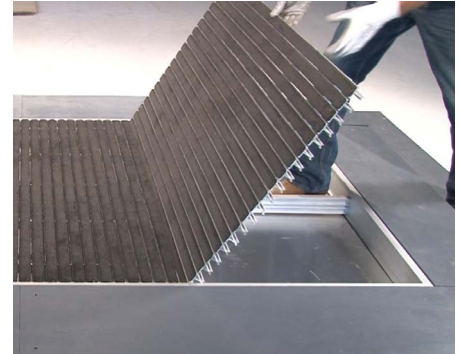
Installation Instructions (continued)



22 Place modules in the correct locations per the shop drawings.



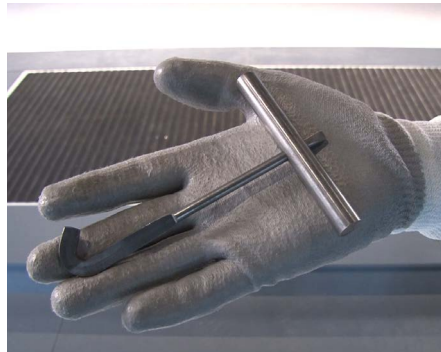
23 Make sure the attached locator clip is seated below the corresponding Pedigrid panel.



24 Complete installing all Pedigrid panels and make final adjustments for rail alignment.



25 Clean the unit with a vacuum. If construction is to continue in the building, cover the unit with plywood sheathing.



26 Shown: lift key tool



27 Use the lift key tool to remove the panels for access to clean beneath the system.