

108 BLACK



232 WHITE



AVAILABLE COLORS:

*** CUSTOM COLORS ARE AVAILABLE AT AN ADDITIONAL CHARGE, SUBJECT TO MINIMUM QUANTITIES. ***

270 GREIGE



136 GRAY

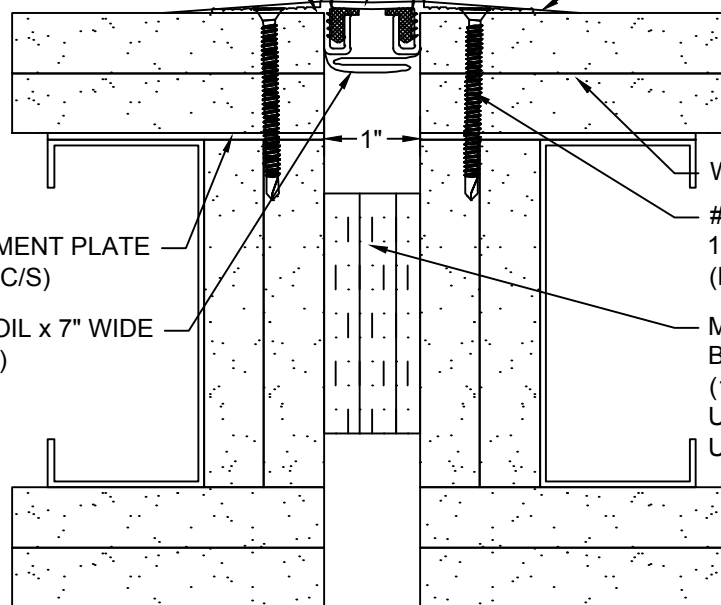


RFX INSULATION BLOCK TO BE CENTERED IN WALL DEPTH EXCEPT WHEN INSTALLED IN CHASE APPLICATION WHERE INSULATION BLOCK TO BE RECESSED 1".

CONTINUOUS EXTRUDED ALUMINUM FRAME (12A226008)

CONTINUOUS EXTRUDED FLEXIBLE GASKET (12V087xxx)

FRAME CONCEALED BY FEATHERED JOINT COMPOUND (NOT BY C/S)



WALL (NOT BY C/S)

ATTACHMENT PLATE (NOT BY C/S)

#8x2" TEK SCREW 18" O.C. (90H091002) (FIN: PLATED)

2 MIL S/S FOIL x 7" WIDE (12M214000)

MODEL RFX-1W FIRE BARRIER 2-HOUR (12M001010)
UL# WW-D-0048 (G.W.B.)
UL# WW-D-0049 (C.M.U.)

Model: FWF-100 W/ FB



Construction Specialties
www.c-sgroup.com

6696 Route 405 Highway, Muncy, PA 17756
Phone: (800) 233-8493 / Fax: (570) 546-8022

895 Lakefront Promenade, Mississauga, Ontario L5E 2C2 Canada
Phone: (888) 895-8955 / Fax: (905) 274-6241



DISCLAIMER:

This document is the property of Construction Specialties, Inc. and contains confidential proprietary information that is not to be disclosed to third parties and is not to be used without approval in writing from Construction Specialties, Inc.

PROJECT:	SCALE: 1:2
CUSTOMER:	DATE:
LOCATION:	JOB NO.:
DRAWN BY:	SHEET NO.: