

ATTENTION

Please read these instructions thoroughly prior to beginning the **STAINLESS-STEEL WALL COVERING** installation.

This instruction sheet is intended to provide a specific guide to follow for the installation of the **STAINLESS-STEEL WALL COVERING**. Contained within is the technical information and installation techniques required to complete an efficient, neat, and long-lasting installation.

TOOLS AND EQUIPMENT

SUPPLIED BY CONTRACTOR

Chalk line 6' – 0" level (or larger)
Straight edge Drop cloth
Masking tape Tape Measure
Paint tray & Roller
Saw or grinder with acceptable blade for cutting
Stainless-steel sheet and/or trims

SUPPLIED BY CONSTRUCTION SPECIALTIES (CS)

Stainless-steel sheet
Stainless-steel trim (Optional)
Fastbond 30 (coverage: 340 sq ft / gal) (5 gal – 90M016001,
1 gal – 90M014001, 1 qt – 90M015001)
Clear caulk (Optional)

INSTALLATION INSTRUCTIONS

STEP 1: WALL PREPARATION

NOTE: Bottom of sheet should be installed no less than 1" (25.4mm) recommended above finish floor for field variation.

Full height installation – Establish a plumb line to be located at the edge of the first sheet. This will serve as a starting point for the wall covering to be installed on that wall and will ensure the following sheets to be installed plumb. Establish a plumb line at the beginning of each new installation of wall covering.

Wainscot installation – Establish a level line at the specified height for the entire length of the run. Install the wall covering by aligning the top edge with this line. A level line should be established for each new installation.

STEP 2: SHEET PREPARATION AND HANDLING

Careless handling of the stainless-steel wall covering could result in damage and unrepairable "kink" marks. Damage is less likely to occur when using two people to move and position the sheets.

Prepare the first sheet by making any necessary cutouts or scribe the edge to fit the inside/outside corner if applicable. Stainless-steel sheets can be installed with butted joints. When installing sheets at a butted joint, make sure that the sheets are flush and do not overlap with one another.

NOTE: Allow a 1/16" gap around door and window frames, and baseboards. Use a straight edge to ensure neat cutouts.

NOTE: When cutting stainless steel sheet, we recommend the use of a saw or grinder that has an acceptable blade for cutting the stainless-steel sheet that will not alter the finish or look of the sheet at the cutout location.

STEP 3: STARTING PROCEDURES

The installation surface must be thoroughly cleaned, free of dirt, grease, wax, oil, and loose paint.

Mask area directly adjacent to the perimeter of the stainless-steel sheet to avoid over spreading of the contact adhesive. Masking tape may also be utilized as a positioning guide during installation of the sheet.

STEP 4: SHEET INSTALLATION

Align the edge of the wall covering with the plumb or level line established in step 1.

Apply the Fastbond 30 to the wall and stainless-steel sheet, in accordance with the adhesive instructions.

Once the Fastbond 30 has dried, position the sheet on the wall using the masking tape as a guide. Pressure roll the materials to set the Fastbond 30.

STEP 5: TRIM APPLICATION (Optional)

If trims were not supplied, skip this step.

Be sure to reference the trim offset measurements indicated on page 3. After the central fasteners are secured, install the trim using the perimeter holes. This step requires fastening through the trim for prop attachment.

Wainscot Trim Installation: Wainscot trim is installed similarly to vertical trim. If it needs to be notched to accept vertical trim intersections, complete the notching before installing the wainscot trim. See notching trims information below for reference.

Installing Trim to Sheet Edges: Install the trim onto the sheet edges. Place the sheet onto the wall as outlined in Step 4. After the central fasteners are secured, install the trim using the perimeter holes. Aligning the stainless-steel sheet carefully with the edge of the previously installed sheet. Ensure the trim overlaps both sheets.

Inside and Outside Corner Trim Installation: When using full-length corner trims with wainscot, notch the corners where they intersect with the wainscot, using the same technique as the for notching the wainscot trim.

Notching Vertical Trims at Wainscot Intersections: All stainless-steel vertical trims, including inside and outside corners, must be notched at the back where it intersects with stainless-steel wainscot trim. Refer to the rabbet detail on page 3.

To properly notch:

Identify where the vertical trim will intersect with the wainscot.

- Mark this location on the wainscot trim.
- Notch out the back leg of the wainscot trim accordingly.
- Refer to the Trim Notch Detail at the bottom of page 3 for visual guidance.

After cutting or notching stainless-steel trims, deburr all cut edges using a fine file to ensure a smooth, safe finish.

⚠ IMPORTANT: Do not install trim tightly against the sheet edge. Allow a small tolerance to accommodate thermal expansion and contraction. Reference the trim offset measurements indicated on page 3.

NOTE: When required, install the vertical trim after the first sheet is in place but before the smoothing operation. Attach the trim to the edge of the abutting sheet and align with the edge of the previously installed sheet, making sure that the trim overlaps both installed sheets. **DO NOT INSTALL THE TRIM TIGHT AGAINST THE SHEET EDGE—ALLOW TOLERANCE TO ACCOMMODATE THERMAL MOVEMENT.** Use a roller to ensure the trim contacts the adhesive and wall surface.

Note: Trims can be mitered in the corners if picture framing or if vertical and horizontal are intersecting.

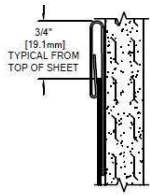
STEP 6: CLEAR CAULK APPLICATION (Optional)

If caulk was not supplied, skip this step.

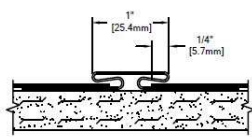
Reference typical caulking instructions.

STEP 7: CLEAN UP

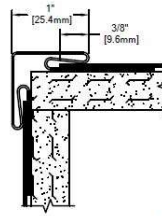
Upon completion of the installation, remove all protective materials (masking tape, protective film). Once the inspection and cleanup have been completed, the cover plates and other wall-mounted items can be installed



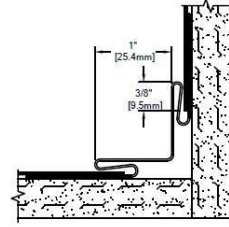
WAINSCOT TRIM
(80S258001)



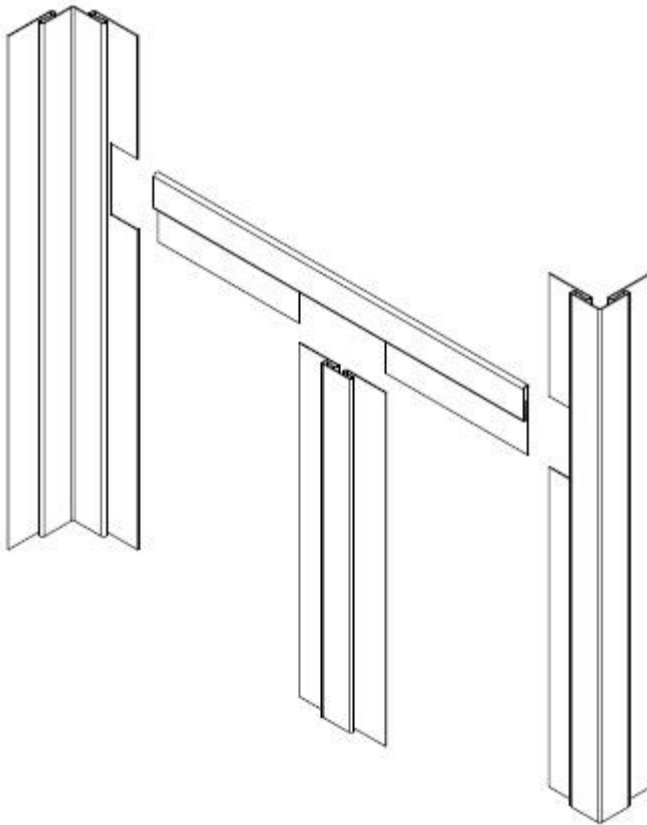
JOINT TRIM
(80S259001)



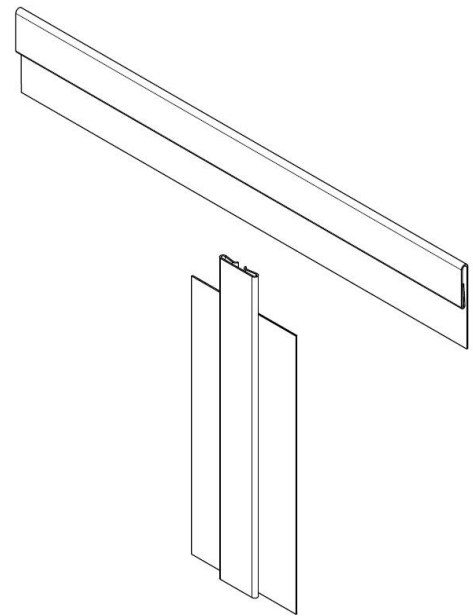
OUTSIDE CORNER TRIM
(80S267001)



INSIDE CORNER TRIM
(80S265001)



Trim Notch
Installation
Detail



Rabbet Detail
Metal vertical trim shown.
Metal inside / outside corner
trims also to be rabbeted

FOR ADHESIVE INSTALLATION			
WALL CONDITION	SPECIFIED ADHESIVE	QUANTITY	CS PART NUMBER
Gypsum Wall	Fastbond 30 Adhesive (coverage: 340 sq ft / gal)	5 GALLON	90M016001
		1 GALLON	90M014001
		1 QUART	90M015001

Hughesville, PA | 800.233.8493 | 570.546.5941
Mississauga, ON | 888.895.8955 | 905.274.3611

www.c-sgroup.com
IWPTechSupport@c-sgroup.com