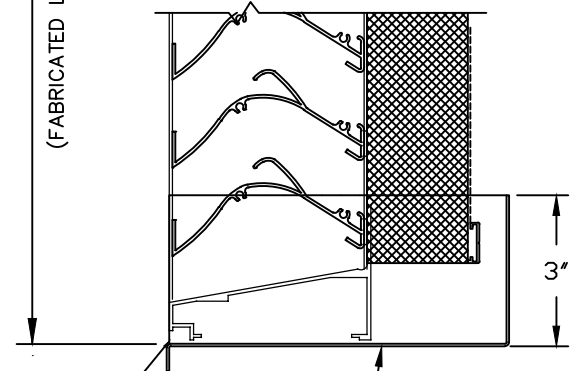
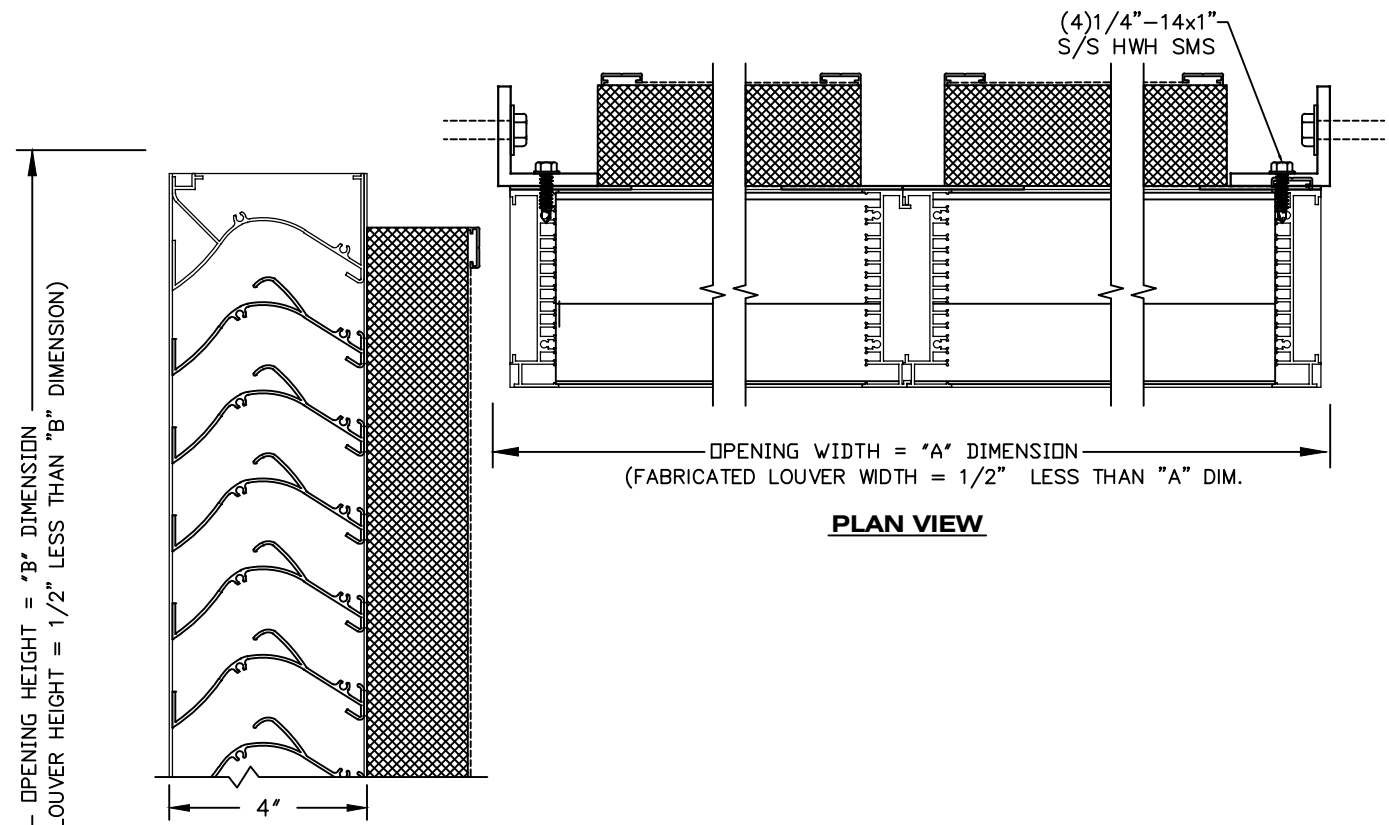


# STORM RESISTANT LOUVERS – MODEL RS-4700



### SCREENS

- SCREEN NOT REQUIRED
- SCREEN REQUIRED
- INTERIOR MOUNTED
- EXTERIOR MOUNTED
- BIRDSCREEN-5/8" EXP. ALUM. MESH IN ALUMINUM FRAME. (MILL FINISH)
- INSECT SCREEN (18x16 MESH)

### FINISHES

- STANDARD MILL
- FLUOROPOLYMER POWDER COAT
  - (1) OF CS STD. COLORS
  - CUSTOM COLOR, CS REQUIRES A COLOR CHIP FOR MATCHING
- ARCHITECTURAL CLASS 1 (DK. OR MED.) BRONZE ANODIC COATING
- 204-R1 CLEAR ANODIZE
- OTHER \_\_\_\_\_

DO NOT CAULK SILL OF LOUVER

**SECTION VIEW**

.050" FORMED ALUM. SILL PAN SET IN A BED OF SEALANT (FINISH TO MATCH LOUVER)

CS EXTRUDED ALUM STORM RESISTANT LOUVER MODEL RS-4700. FRAMES TO BE FABRICATED FROM 6063-T6 ALLOY, WITH REINFORCING BOSSES AND A NOMINAL .063" MATERIAL THICKNESS. ALL FASTENERS TO BE STAINLESS STEEL.

WIND LOAD = PSF

MARK	QTY.	"A" DIM.	"B" DIM.	NUMBER OF MULLIONS	LOCATION	REMARKS

Construction Specialties, Inc.  
 3 Werner Way  
 Lebanon, New Jersey 08833  
 800-233-8493

PROJECT:  
 CUSTOMER:  
 ARCH'T:  
 AGENT:

DRAWN BY:      CKD. BY:  
 DATE:  
 DWG. NO:  
 SHEET 1 OF 1