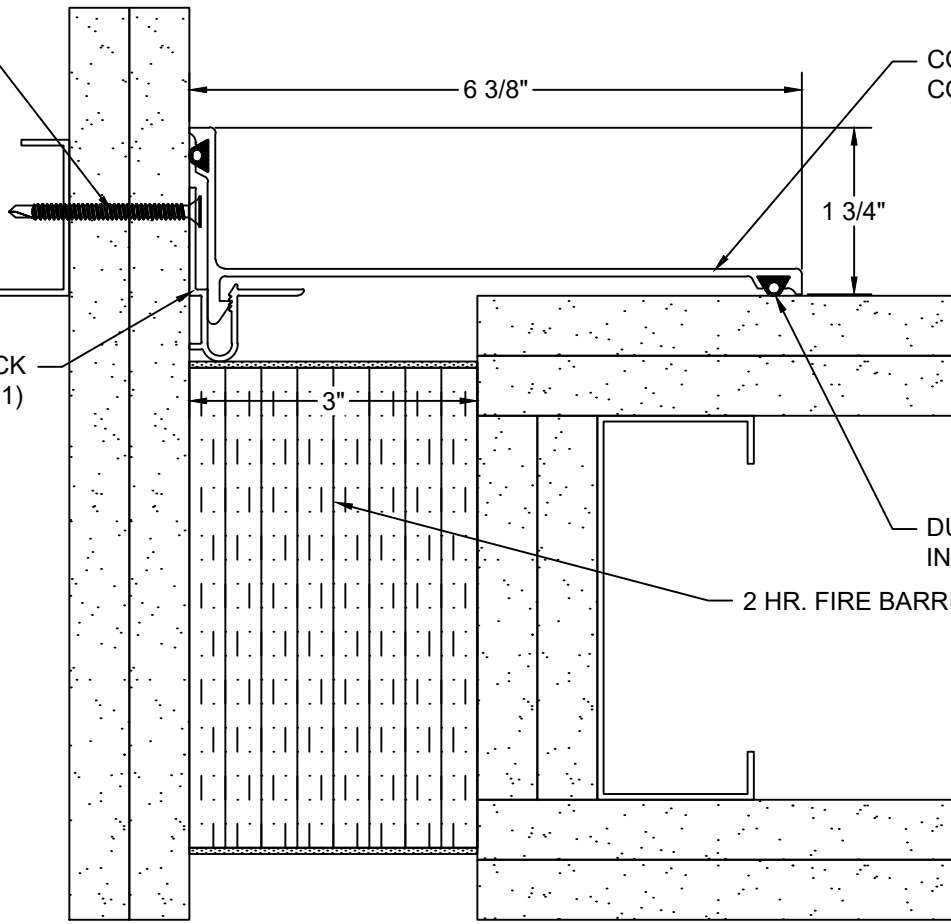


#8x2" TEK SCREW  
18" O.C. (90H091002)  
(FIN: PLATED)



2" WIDE ALUMINUM BACK  
CLIP 18" O.C. (90F011001)



6 3/8"

1 3/4"

3"

CONTINUOUS ALUMINUM  
COVER PLATE (12A551001)

DUROFLEX GASKET SHOP  
INSTALLED (12V029136)

2 HR. FIRE BARRIER

## Model: ASMC-300 W/ FB



**Construction Specialties®**

[www.c-sgroup.com](http://www.c-sgroup.com)

6696 Route 405 Highway, Muncy, PA 17756  
Phone: (800) 233-8493 / Fax: (570) 546-8022

895 Lakefront Promenade, Mississauga, Ontario L5E 2C2 Canada  
Phone: (888) 895-8955 / Fax: (905) 274-6241

© Copyright 2018 Construction Specialties, Inc.

PROJECT:	SCALE: NTS
CUSTOMER:	DATE:
LOCATION:	JOB NO.:
DRAWN BY:	SHEET NO.: