

The background image is a large, modern building with a glass facade and a courtyard with greenery. The building has a grey metal frame and large glass windows. The courtyard is paved with light-colored stone and has several circular planters with green shrubs. There are also some small trees and flowers in the courtyard. The sky is blue with white clouds. Several white-bordered inset images are placed over the main image, showing different architectural details: a close-up of a window, a close-up of the building's edge, a close-up of the courtyard wall, and a close-up of the courtyard plants.

ARCHITECTURAL PRODUCTS

For buildings
that thrive.



Construction Specialties®

Helping you build *big dreams.*

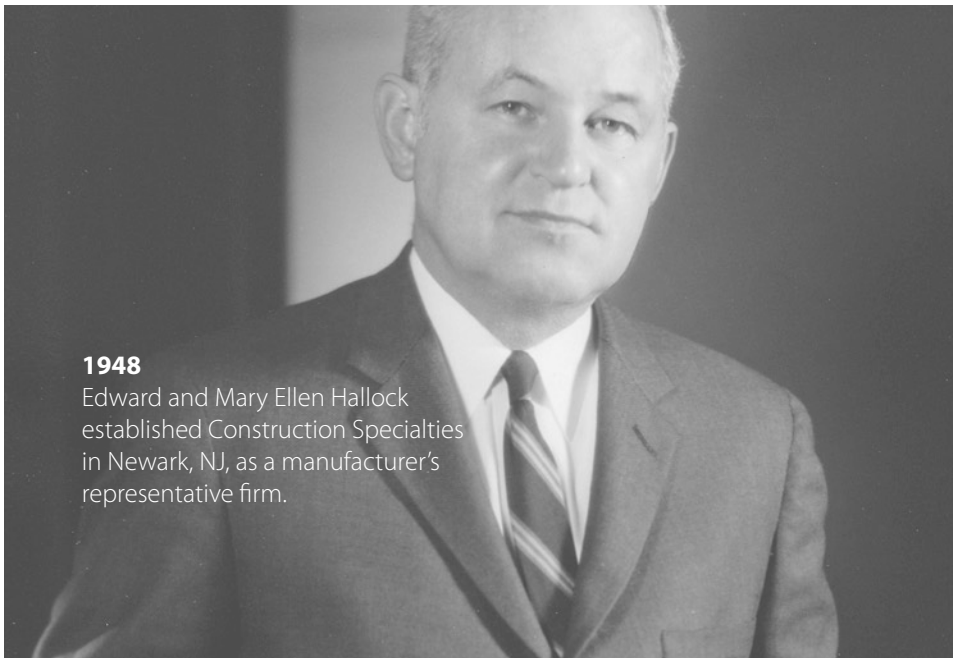
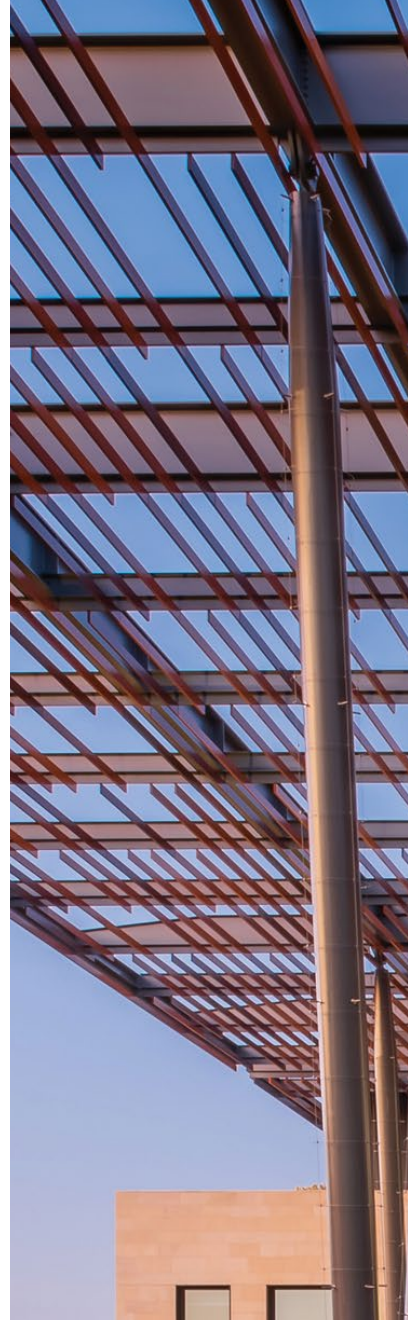
We start with a simple promise: offer the highest quality service, products, and expertise to help the building industry create amazing places. And since 1948, we've done that by taking a listen-first approach to discover what you really need. That has led us to create innovative solutions as far back as the very first extruded louver. Staying curious empowers us not only to solve problems but also to create opportunities to help you build better.





Leading *with excellence.*

We're always challenging ourselves to live up to your highest standards. So when you find that what's out there doesn't work for you, we strive to create what does. That means we're not just ready but willing to change our products to fit your project. It's an approach that's helped set the bar for the industry and can help you realize a world of possibilities.



1948

Edward and Mary Ellen Hallock established Construction Specialties in Newark, NJ, as a manufacturer's representative firm.

75+

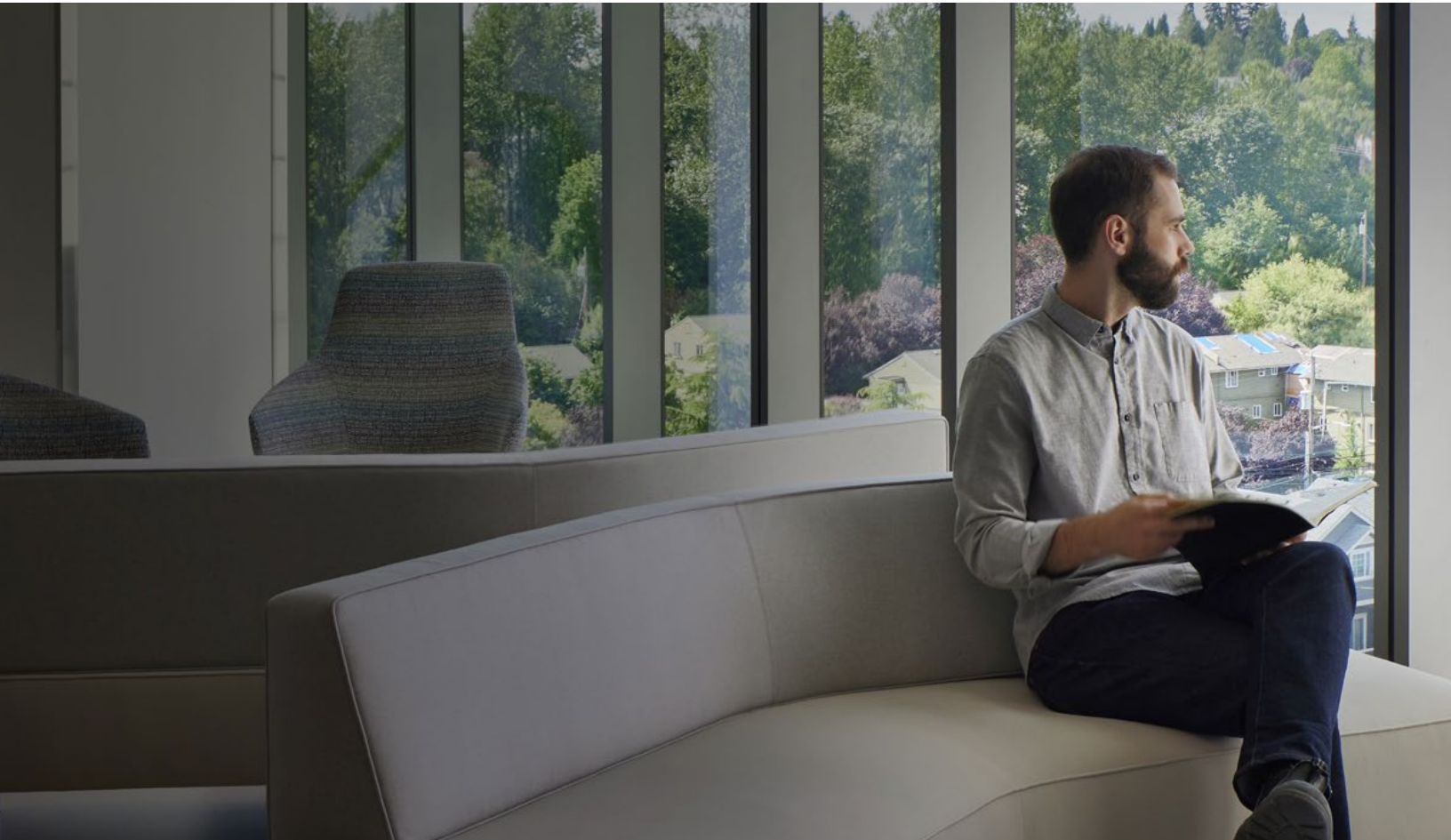
Years of excellence
in the architectural
products industry





LEADERS IN THE INDUSTRY

We manufacture the highest quality interior products for architects, designers, engineers, and contractors to create resilient spaces and elevate the building industry.



Pursuing *better.*

Taking responsibility for our impact.

We think in generations, not days. For us, a sustainable business practice is an action that, when repeated, improves more than it harms people and the environment.

This is why we have adopted, mindful MATERIALS' Common Materials Framework as a tool to assess our impact.



*Learn more



Human Health Minimizing the use of harmful substances.



Climate Health Reducing carbon emissions.



Ecosystem Health Stewarding natural resources.



Social Health Caring for the people we are connected to.



Circular Economy Designing out waste.

Solutions from *the outside in.*

A beautiful building is just the beginning. Our goal is to partner with you to transform your project into a vibrant space that positively impacts its occupants—whether that means protection from the elements, making a visual statement, or anything in between. Let's make it memorable together.

ARCHITECTURAL LOUVERS

SUN CONTROL SOLUTIONS

ARCHITECTURAL SCREENS

EXPANSION JOINT SOLUTIONS

ACROVYN® WALL PROTECTION

ACROVYN DOORS

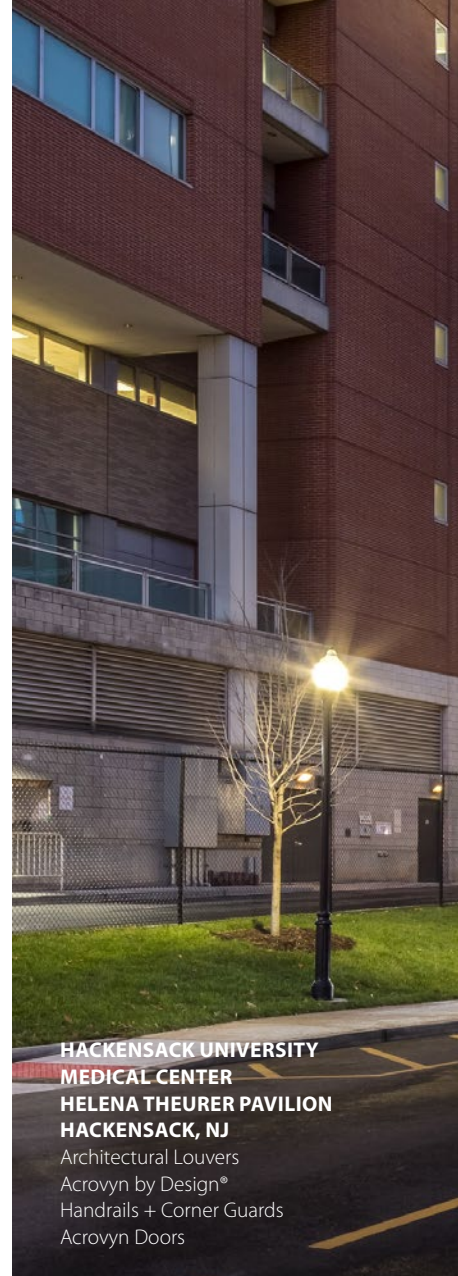
PRIVACY CURTAINS + TRACK

ENTRANCE FLOORING SOLUTIONS

ARCHITECTURAL ELEMENTS



*View our
Interior Products



**HACKENSACK UNIVERSITY
MEDICAL CENTER
HELENA THEURER PAVILION
HACKENSACK, NJ**

Architectural Louvers
Acrovyn by Design®
Handrails + Corner Guards
Acrovyn Doors





ARCHITECTURAL PRODUCTS

Architectural *Louvers*



Construction Specialties®

A louver *for every demand.*

Whether you want your louver to be an architectural focal point or blend right in, Construction Specialties can help you achieve your goals without ever having to sacrifice function. And with a variety of performance types and finishes, the options are truly endless.

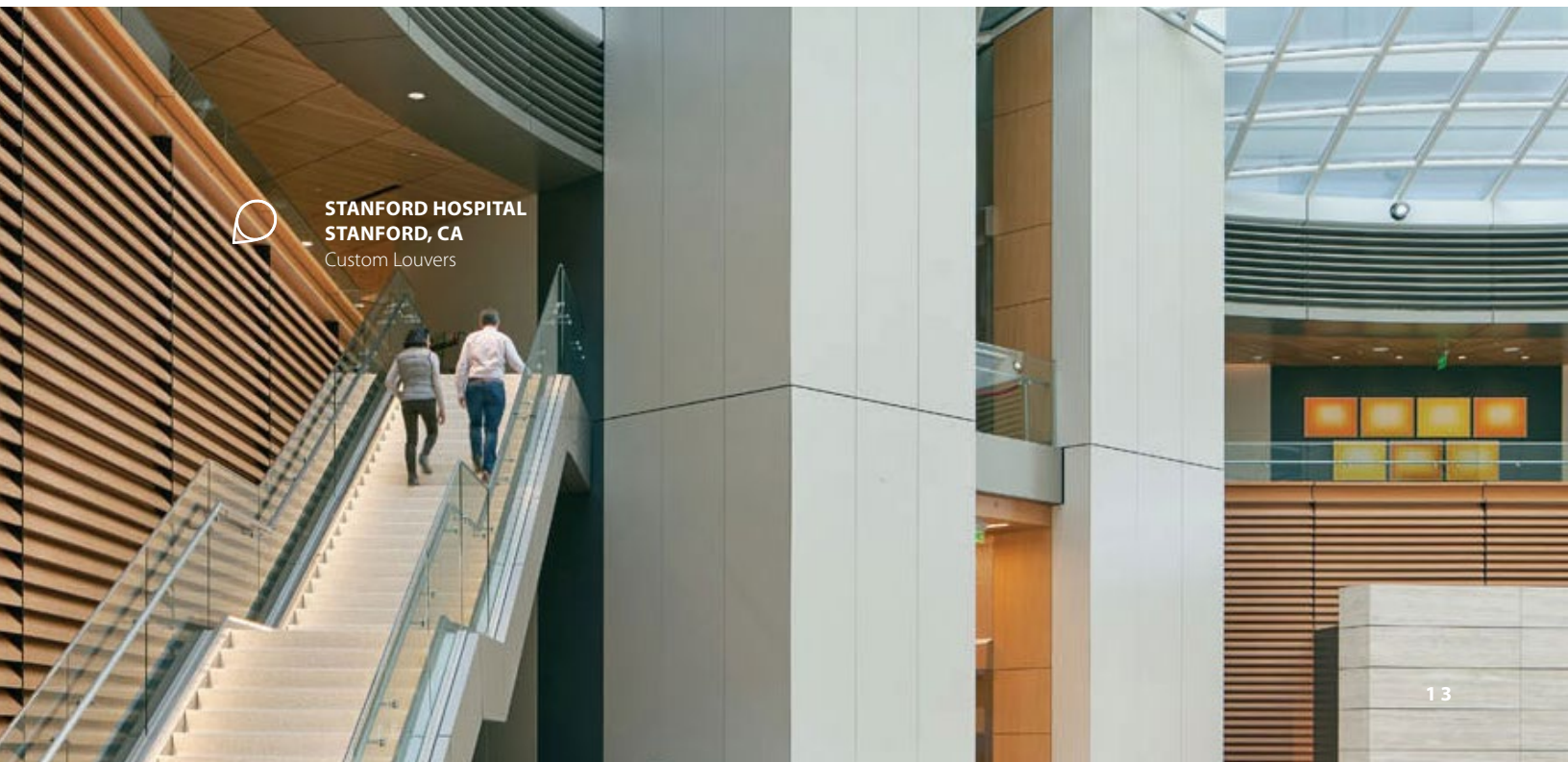
We view ventilation as an opportunity—not a restriction. So if we don't have exactly what you're looking for, we'll work with you to create the right louver that fits your project's specific needs.

STORM-RESISTANT	Up to 99.9% resistance to wind-driven rain
EXTREME-WEATHER	Withstands hurricane and tornado conditions
PERFORM	Fully concealed louver
BOLD LINE	Performance with exceptional aesthetics
TRADITIONAL	High free area, low pressure drop. Drainable and Non-drainable options.
BLAST RESISTANT	Capable of withstanding high blast loads
ACOUSTICAL	Functionally manage noise transfer
OPERABLE	Open or closed, you're in control
THINLINE	For use in tight spaces
FORMED METAL	Stands up to extreme conditions such as high temperatures.
LOUVERS+	Louvers of any size, shape, color, or innovate entirely new ideas.





STANFORD HOSPITAL
STANFORD, CA
Storm-resistant Louvers



STANFORD HOSPITAL
STANFORD, CA
Custom Louvers

Integrate *into any design.*

While some louvers are all about standing out—others are more about blending in. Whether you want your louver to be a major design element or simply disappear into the facade of your building, CS has options that will work beautifully. Turn mechanical challenges into architectural statements with unlimited colors, frame options, lighting, and custom designs.



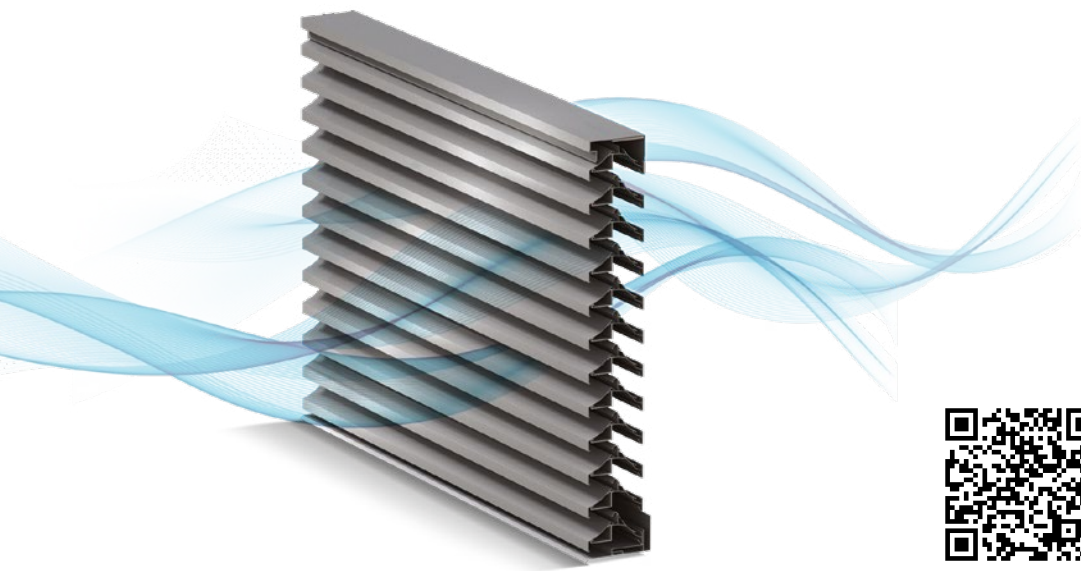
UBER OFFICE
SAN FRANCISCO, CA
Storm-Resistant
& Bold Line Louvers

412 WEST 15
NEW YORK, NY
Storm-Resistant Louvers



A broad spectrum *of protection.*

Louvers are essential to any successful building. They provide healthy air exchange, while ensuring unwanted elements, like rain, dirt, and animals remain outside. They also provide an extra architectural element to your building's exterior - giving you an opportunity to improve the look of any building while meeting mechanical requirements.



*See It In Action

AIR FLOW ISN'T A RESTRICTION. IT'S AN OPPORTUNITY.

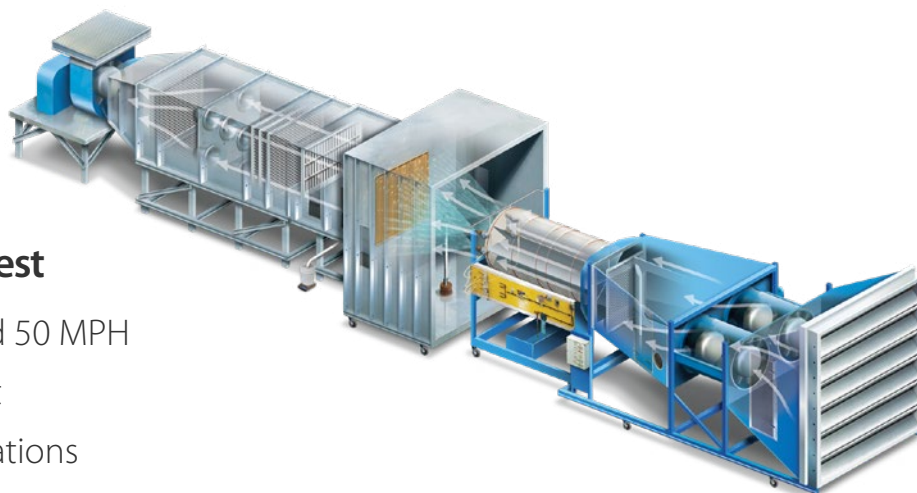
Architects can rely on our louvers to complement mechanical systems and simultaneously provide architectural interest.

ST REGIS
CHICAGO, IL
Storm-Resistant Louvers





LITTLE CAESARS ARENA
DETROIT, MI
Storm-Resistant Louvers
Custom Screen



We can simulate and test

- Wind speeds of 29.1 and 50 MPH
- Air-handling equipment
- Unusual product orientations



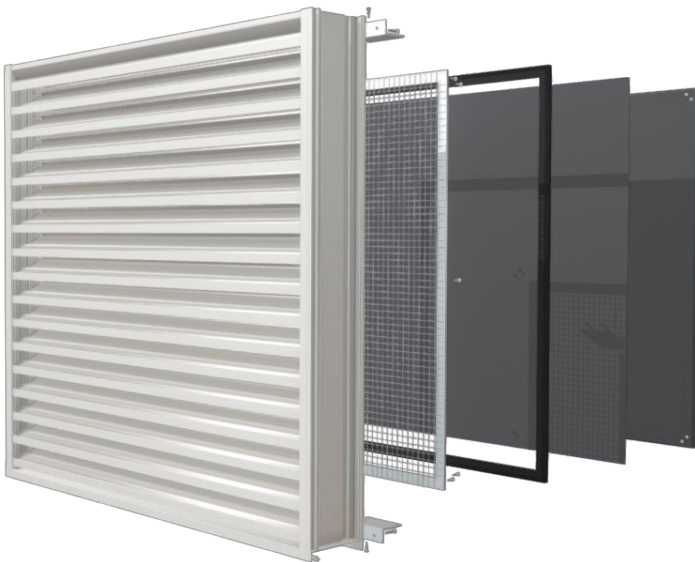
Tested for *any condition.*

Knowing how a louver will perform is critical to ensuring that it will stand up to real-life conditions on the job. We can verify how your solution will perform because we use our in-house test chamber to determine every single model's performance. By evaluating a louver's resistance to water penetration at incremental speeds, we can provide the peace of mind that it will deliver the air intake and water resistance performance you require.



High performance *blank-offs.*

Blank-offs are an excellent solution for architects and designers using louvers to continue a design element on their project. Blank-off panels are often selected as a simple way to mitigate air and water from coming through non-ducted areas. Any specified louver can have blank-offs applied with or without the ability to convert to active at a later time.



*See It In Action

TOGETHER IS BETTER

Our professionals look at every louver and blank-off project through a custom lens. Our team will work with you to engineer the best possible solution AND we'll test every system before it's installed to ensure its performance. It's never too early in the process to partner with us. Reach out today to speak with our team.



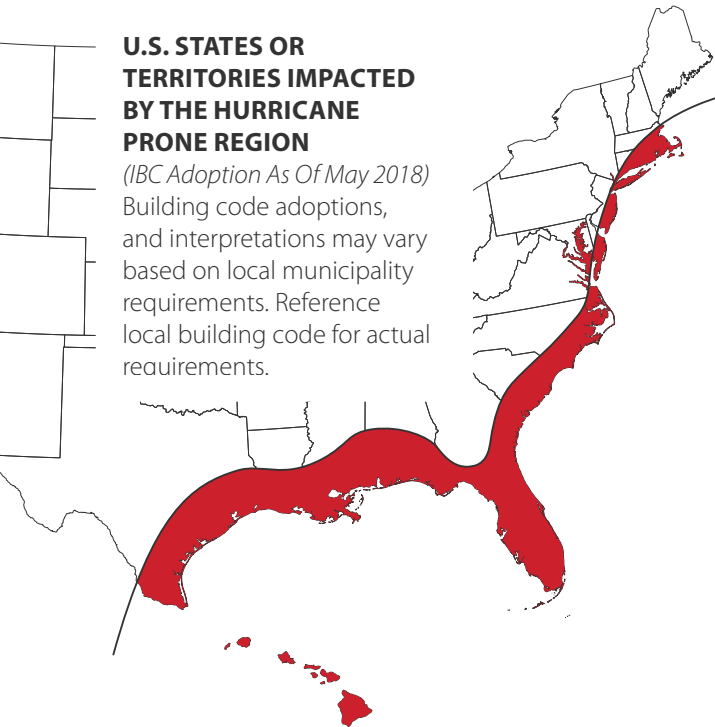
**PIEDMONT HOSPITAL
ATLANTA, GA**
Storm-Resistant Louvers

Verified for *peace of mind.*

The impact of proper airflow on health, safety, and efficiency is now more critical than ever. We take our part seriously, and that's why Construction Specialties has the largest selection of AMCA verified louvers on the market.

U.S. STATES OR TERRITORIES IMPACTED BY THE HURRICANE PRONE REGION

(IBC Adoption As Of May 2018)
Building code adoptions, and interpretations may vary based on local municipality requirements. Reference local building code for actual requirements.



We ensure the performance of our extreme weather louvers through third-party testing and certification, giving you confidence that they will withstand hurricane-force wind-driven rain and projectiles in coastal applications.

In addition to AMCA and Miami-Dade County standards, we also design in accordance with FEMA361, ICC 500, ASTM330, Florida Building Code, and Texas Department of Insurance.



AMCA

The Air Movement and Control Association is the primary certifying agent for all louvers. Below are three separate test standards governed by AMCA:

- AMCA 500-L
 - Pressure drop
 - Air Flow
 - Water penetration
 - Wind-driven rain
 - Wind-driven sand
- AMCA 540
 - Impact resistance
- AMCA 550
 - Hurricane velocity wind-driven rain

Miami-Dade County

Approved for use in hurricane zones, specifically in Miami-Dade and Broward Counties in Florida, these louvers must pass several tests designed to simulate severe weather conditions:

- Technical application standards 201, 202 & 203
- Standard wind loading
- Florida product approval

A FIRST FOR EXTREMES

The DCPL-3704 is the first Dade County Certified louver with a perforated sheet face.



We carry 60+ AMCA certified or listed models.

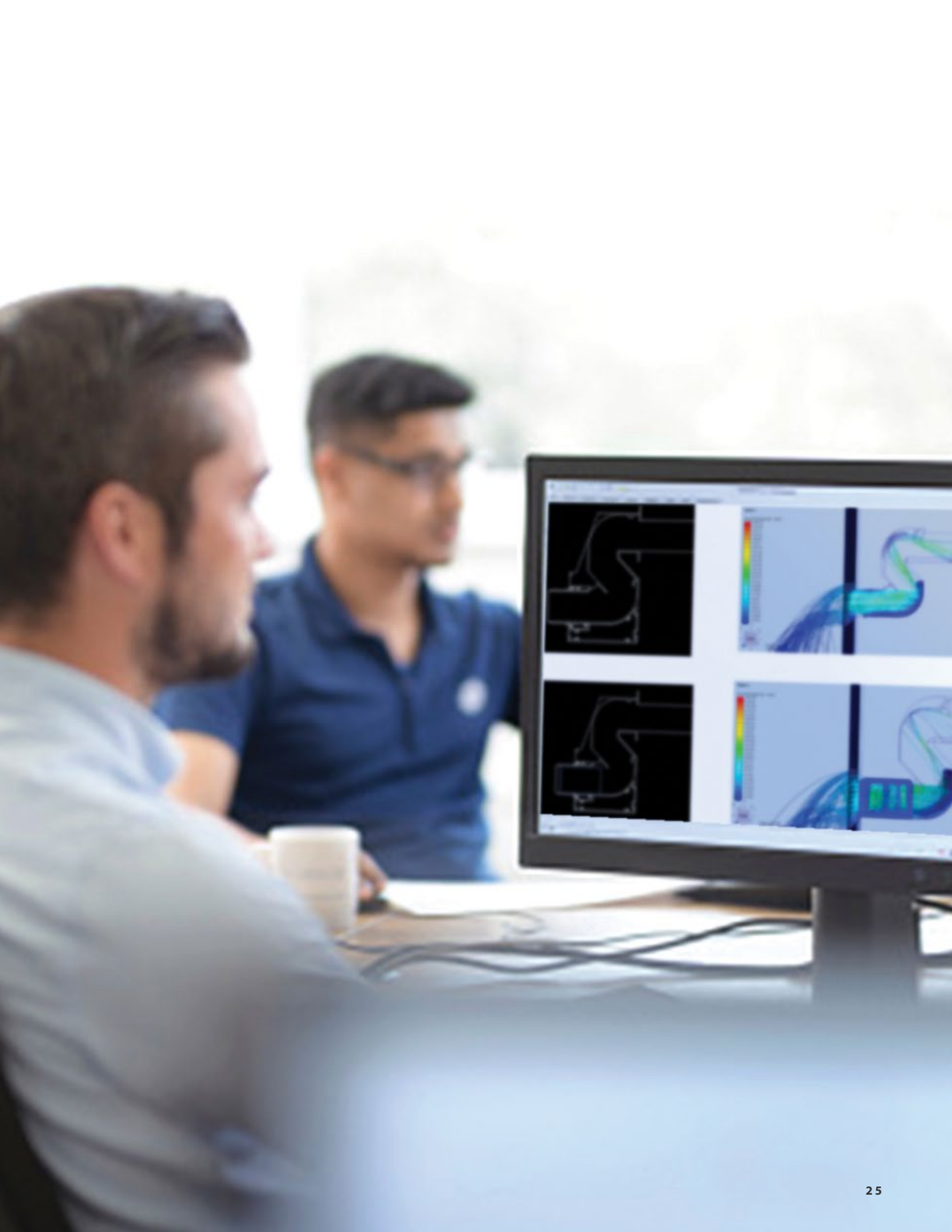
Everything *you need.*

No matter the challenge, we accept. If your design calls for an airflow or ventilation system with a one-of-a-kind look and function, we offer complete design-assistance to help you bring it to life.

In-house design services

- Structural
- Mechanical
- Computer modeling
- Custom detailing
- Comprehensive drawings
- Advanced test reporting
- Installation guidance
- Environmental Product Declarations (EPDs) for all models





ARCHITECTURAL LOUVERS

**UT SOUTHWESTERN
WILLIAM P CLEMENTS JR
UNIVERSITY HOSPITAL
DALLAS, TX**
Centria MetalWrap Louvers



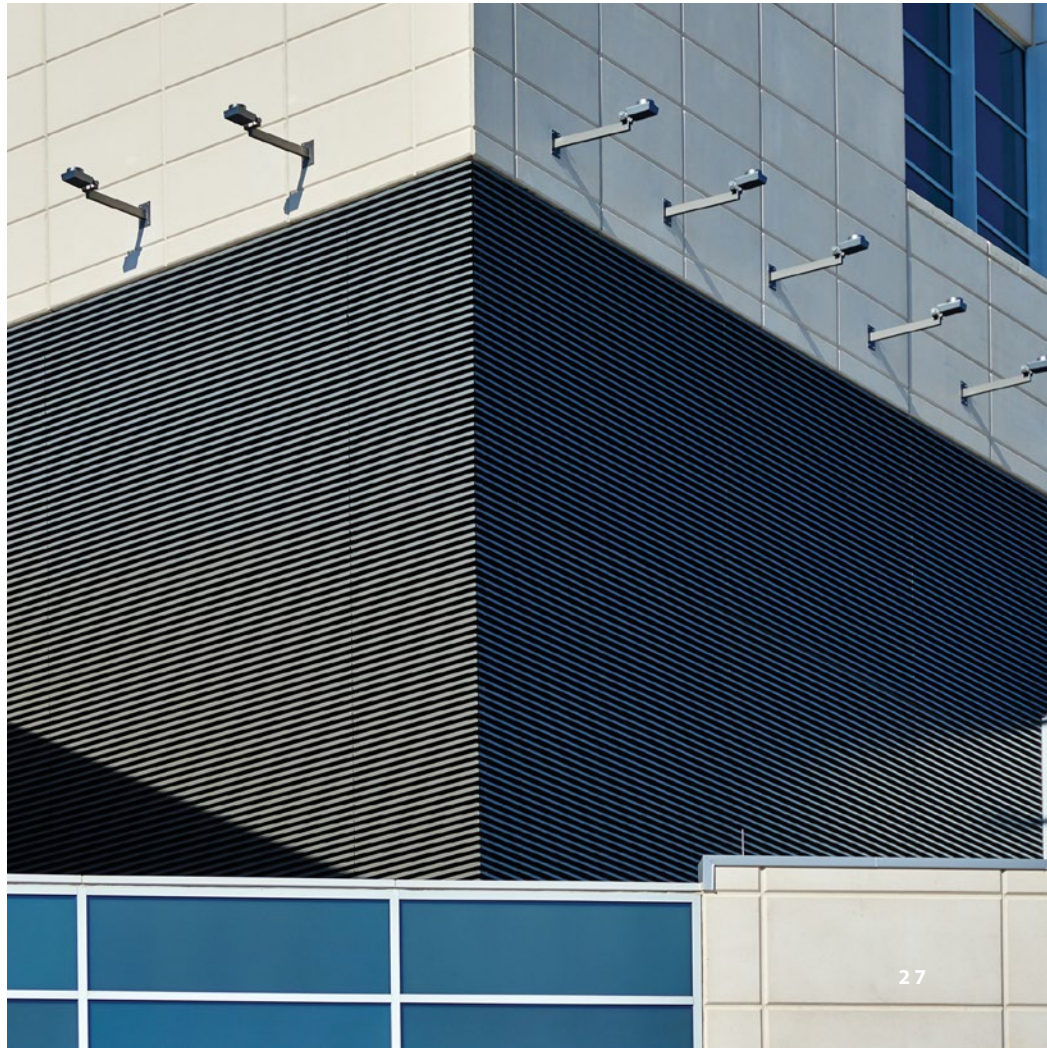
CASE STORY

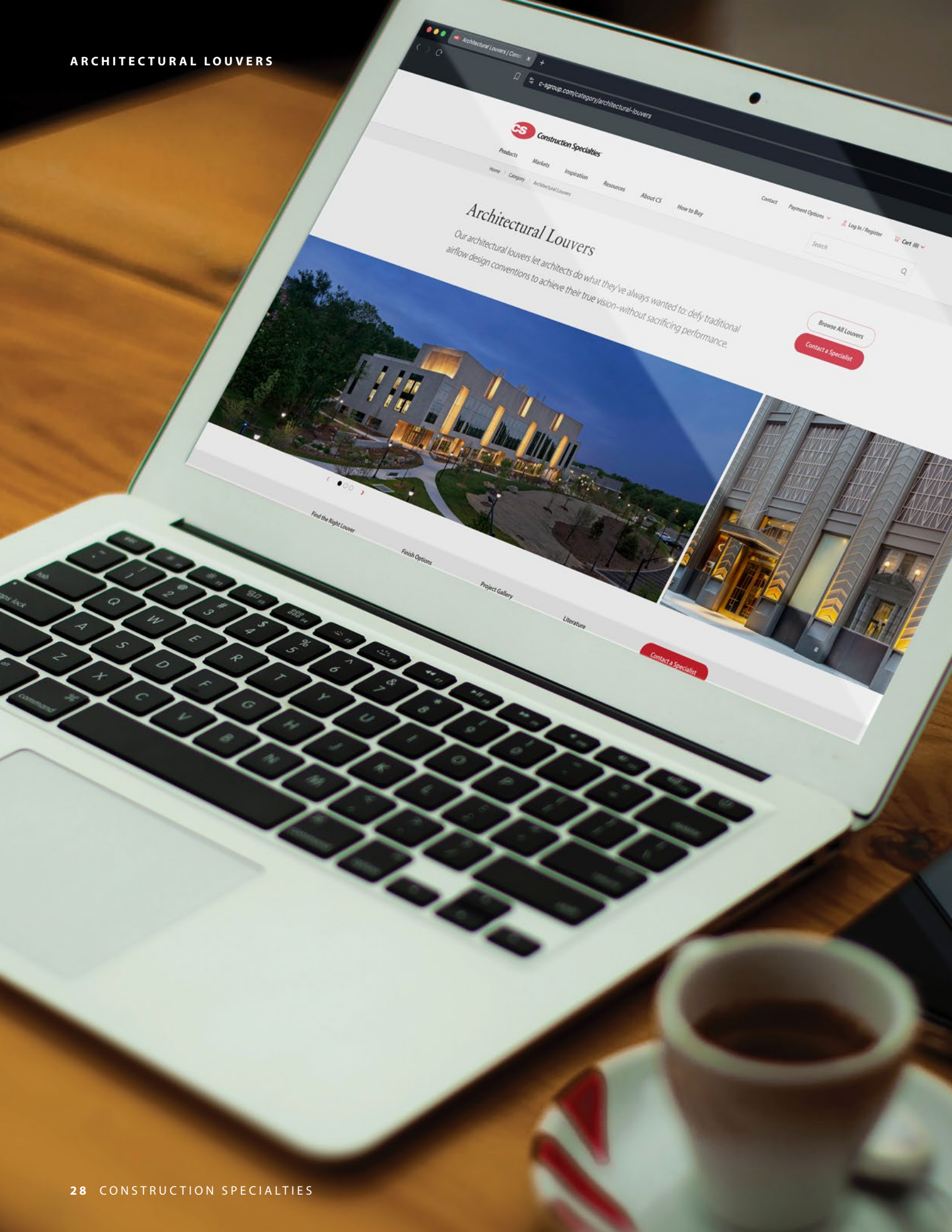
Future louver use *is wide open in Texas.*

While there are 40,000ft² of louvers on this large Texas hospital, only 14,000ft² are active. 23,000ft² are inactive to provide a continuous look, and 7,000ft² were made to be temporarily inactive. When CS partnered with CENTRIA to design the MetalWrap™ Series Louvers for this project, the temporarily inactive louvers were manufactured and installed so that they would have the ability to be converted into active louvers at a later time.



[*View The Full Story](#)





A vertical photograph on the left side of the page shows a tablet and a smartphone resting on a wooden desk. The tablet is at the top, displaying a website with a dark header and white content. The smartphone is at the bottom, showing a dark screen. A red vertical bar is positioned to the right of the tablet.

Need help *comparing?*

Browse our website to select the best solution for your project. Compare products, dimensions, performance, and more – all in one place. Not sure? Connect with a local representative for assistance.

Explore our model options for yourself.



*View Louver Selector

Tackle your challenges with a local expert.



*Find Your
Local Representative

ARCHITECTURAL PRODUCTS

Sun Control *Solutions*

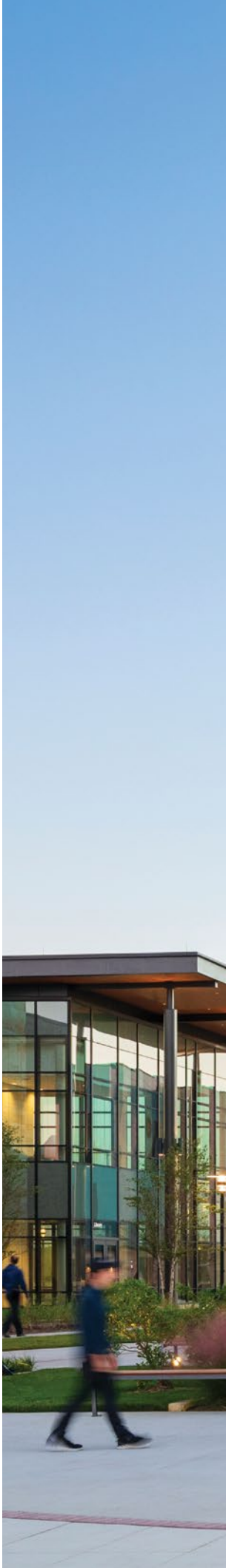


Construction Specialties®

Unique & *custom aesthetics.*

Whether designing a one-of-a-kind, custom exterior or simply dressing up a utilitarian structure, Sun Controls offer a unique aesthetic to building owners. Like artwork for your walls, they serve as an attractive, energy-efficient solution to creating a feeling or setting a mood. Whatever the need, Construction Specialties offers the perfect solution to architects looking to enhance and protect any facade from sunlight and glare.

CANTILEVERED	Supported via straight or curved outriggers.
SUSPENDED	Suspended horizontally via cables.
CASCADING	Mounted by suspension cables instead of outriggers; filters natural light without obstructing the view.
FRAMED	Supported and framed via flat plate outriggers.
FRAMELESS	Supported via bird mouth brackets.
SUN CONTROLS+	Jump into our BetterBuilt Studio to explore curving and twisting blades, LED lighting integration, bold finishes and more.





Campus Commons

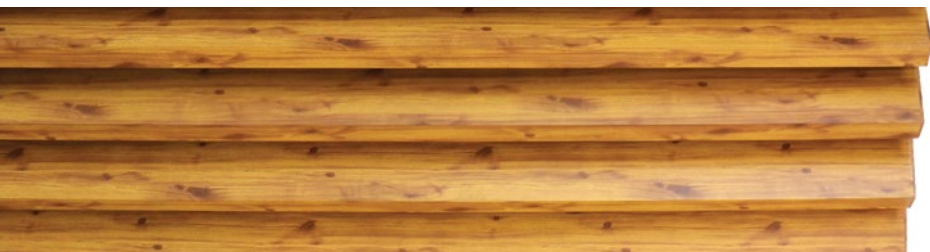
COLLIN COLLEGE
WYLIE CAMPUS
WYLIE, TX
Frameless Sunshades



STANFORD BASS
BIOLOGY
STANFORD, CA
Frameless Sunshades

GO AGAINST THE GRAIN

Our AAMA 2604-certified Woodgrain Powder Coat finishes come with a 10-year warranty. If you'd rather go against the grain and create your color, we'll custom color match a powder coat to your exact specifications.





Clothes for *your building.*

How can you create a fashionable, modern first impression on any facade and still manage to keep light out and reduce energy costs? The answer is simple—Sun Controls.

Choose from a variety of blades, screens, outriggers, fascias, or mounting options. Orient them horizontally or vertically and finish them with various powder-coat finishes for the ultimate in style and function!



Take control of *daylight and glare.*

Promote lower energy costs and reduced glare by allowing filtered light to enter interiors and occupants to see out. And in the case of parking garages, sun control systems can aid in code compliance by creating a barrier against headlight glare.

UNIVERSITY OF HAWAII AT MANOA
INFORMATION TECHNOLOGY CENTER
HONOLULU, HI
Framed Sunshades



DEPARTMENT OF
SANITATION OF NEW YORK,
STATION 125
NEW YORK CITY, NY
Framed Sunshades



DESIGN DETAILS CONTROLLED BY YOU

Once you've identified the series of sunshade your project calls for, you can go on to select blades, screens, perforated sheet, and all of the components that make your design unique.

Tackle your challenges
with a local expert.



*Find Your Local
Representative



Choose a *sunshade series.*

Sun Controls manage daylight, glare, heat gain, and energy usage while adding a “wow” factor to your facade.



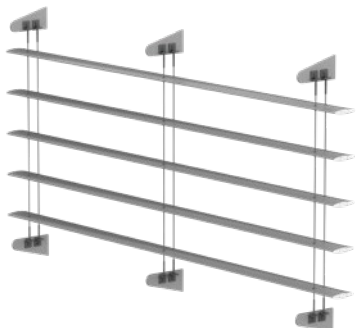
Cantilevered

Sometimes called "eyebrow" shades, these systems tie back into your project's structural support system for a clean visual, with either a straight or curved outrigger. Add lights for an extra pop of fun.



Suspended

Similar to cantilevered, these systems are connected to your building and supported with cables or rods for a more technical look. They also help carry loads from wind and snow.



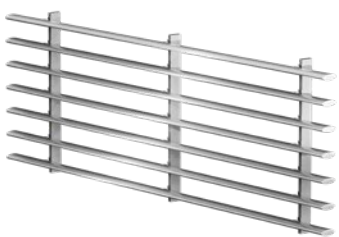
Cascading

Choose this installation for a stunning "floating blades" effect. Tension cables carry the blades for a minimal aesthetic.



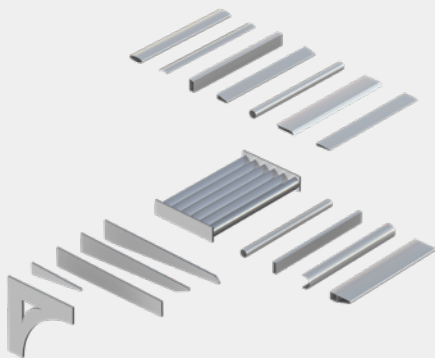
Framed

These systems have a boxier aesthetic. Combine blades, screens, and perforated sheet for nearly endless configuration options.



Frameless

Start here when looking for minimally supported blades and exposed ends to give a floating aesthetic.



Sun Controls+

Go beyond shading in our BetterBuilt Studio. Together, we will customize what we have or build what we don't. Mix and match parts and materials to suit your unique design needs.

Shade with *screens or blades.*

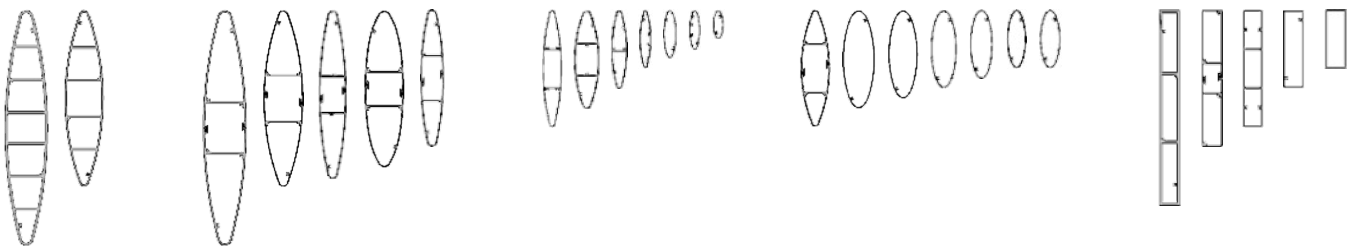
On the following pages, you'll learn about all the ways our Sun Control Solutions can be customized to wildly different effects. At the most basic level, though, they all begin with either blades or screens.





Blade options

Provided as individual blades or as pre-assembled panels. Available in vertical and horizontal orientation.



Screen options

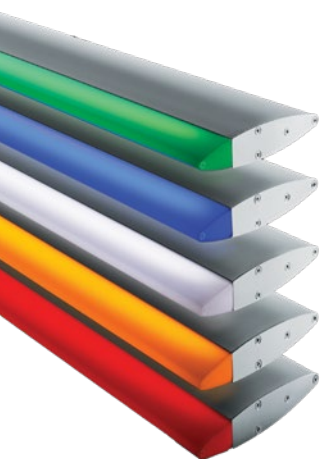
Express with pattern and color or provide a sight cutoff while enabling the flow of air and light.



Light up *the night sky.*

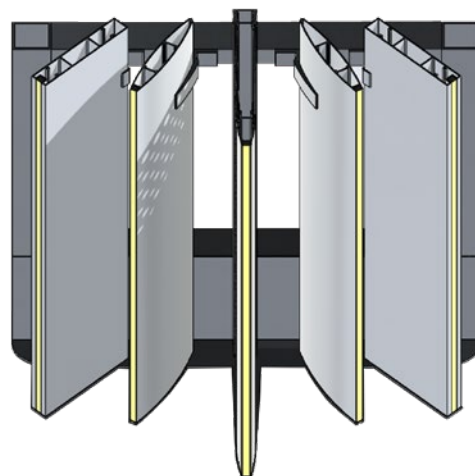
Our lighted blades function as a solar shading system during the day and illuminate at night to make an architectural statement.

**CHARLOTTE DOUGLAS
INTERNATIONAL AIRPORT
CHARLOTTE, NC**
Frameless with Lighted Blades



40,000-Hour Lifespan

Lighted blades have energy efficient LED lights that run along the front of the blades. The blades can be mounted vertically or horizontally.





Make your building *stand out.*

Facades by Design™ allows you the freedom to include graphics, photos, text, color, signage, and more to your facade. Make your building stand out by applying graphics to any of our architectural solutions.

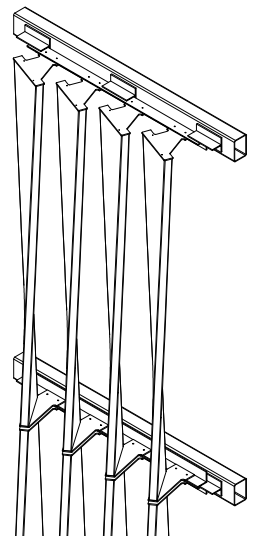
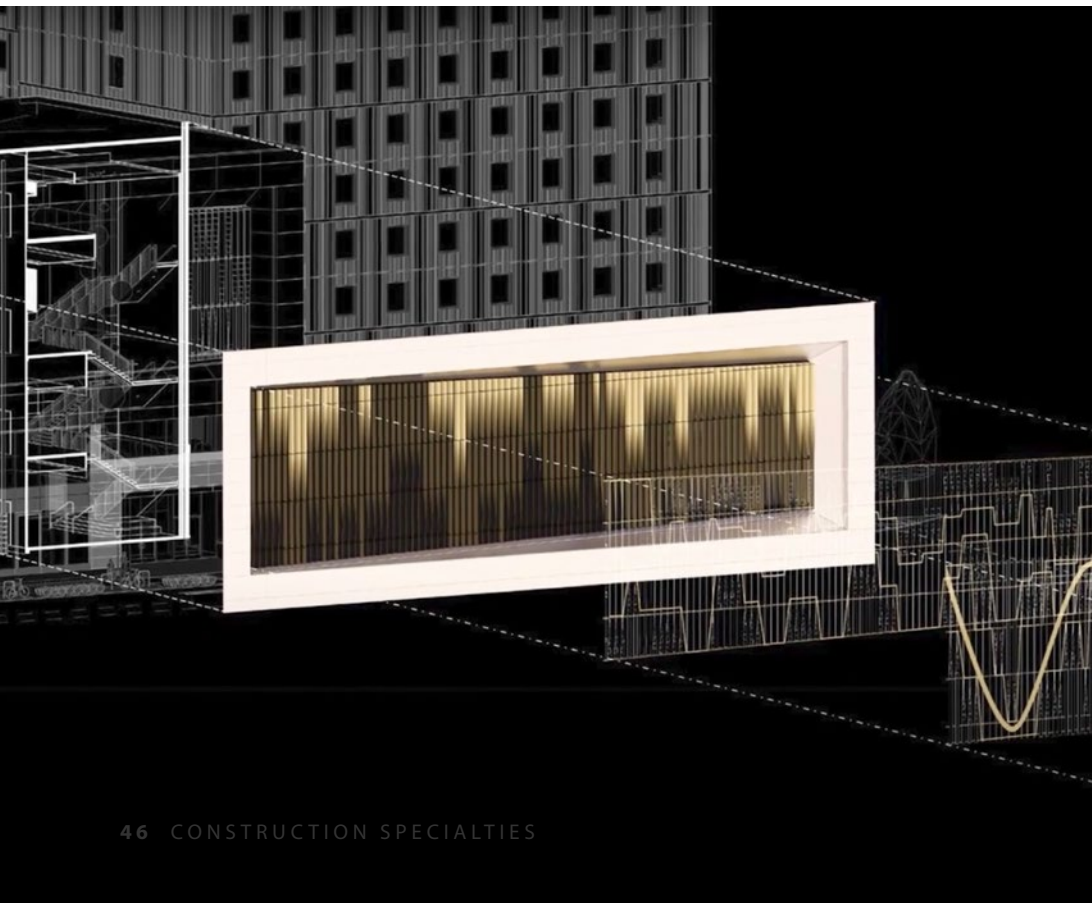




*Watch how to level up your exterior.

Go beyond *Sun Controls*

If “standard” isn’t in your wheelhouse, don’t worry. At CS, manufacturing the product is just the beginning. Our team of engineers can turn any rendering into an actual product solution with specification documents and custom details to match. We have a long history of considering every possibility, and your custom-designed sun shades will arrive ready to perform and will be perfectly calculated to load and wind requirements.

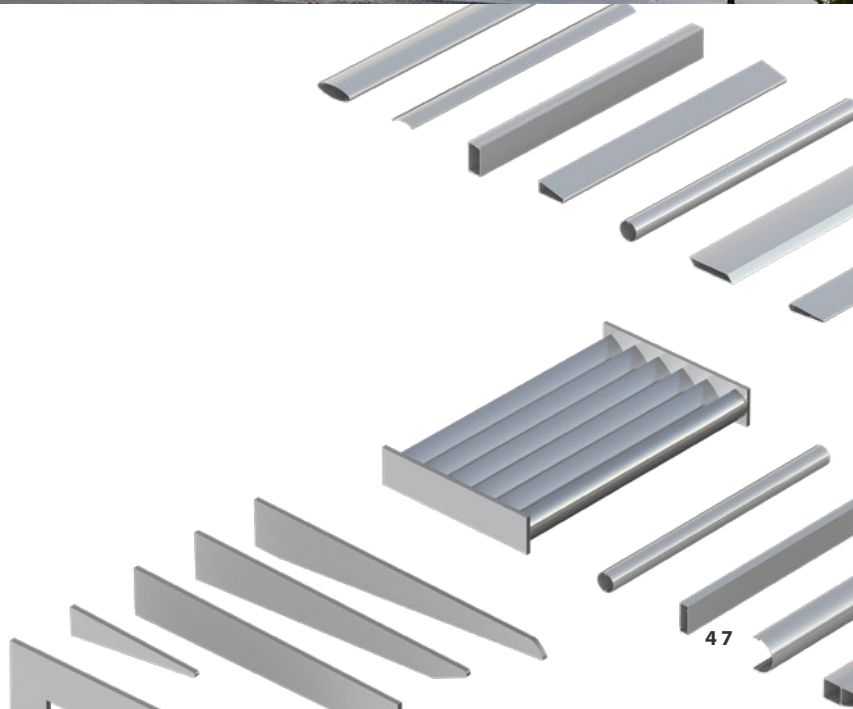




SAVANNAH
COLLEGE OF ART & DESIGN,
ATLANTA, GA
Twisted Frameless Sunshades

Achieve your vision

Construct a unique sun control system
that matches your design statement.



Perfectly integrates *into any facade.*

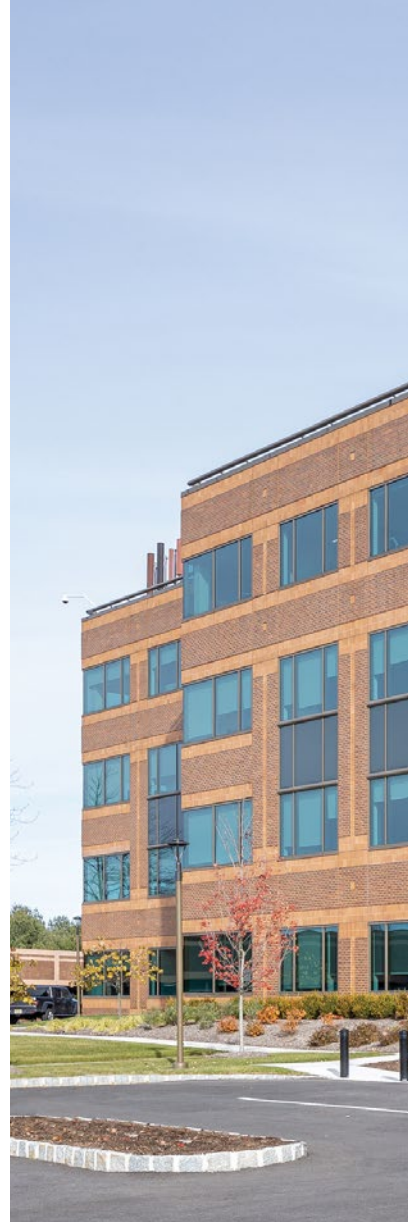
The applications for our sun controls are as limitless as your imagination. Our systems can mount to all structures and attach to any masonry or curtain wall. Mounting design specifications and hardware, including brackets, come standard with every CS daylight management system. Whether you're dressing up a substation or creating a canopy, bringing a parking garage up to code, or making a library more comfortable, our sun controls and accents are all you need.

Applications include

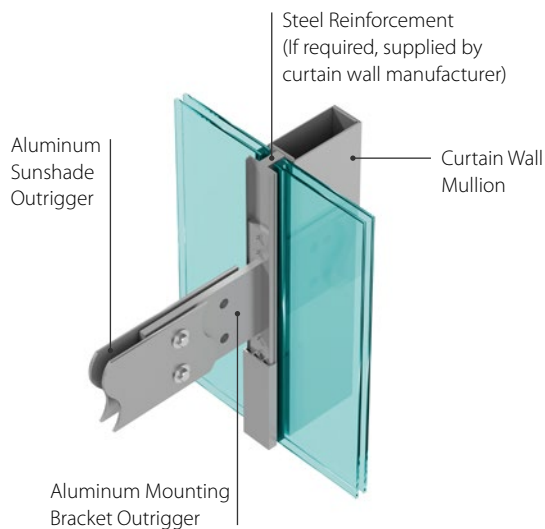
- Cantilevered
- Suspended
- Framed
- Frameless



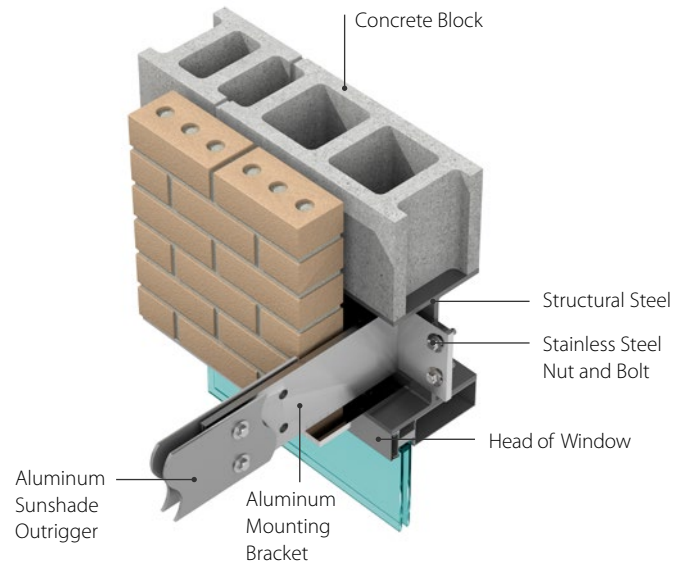
*Learn about our
Integrated Solutions
with Centria® Panels



On Curtain Wall



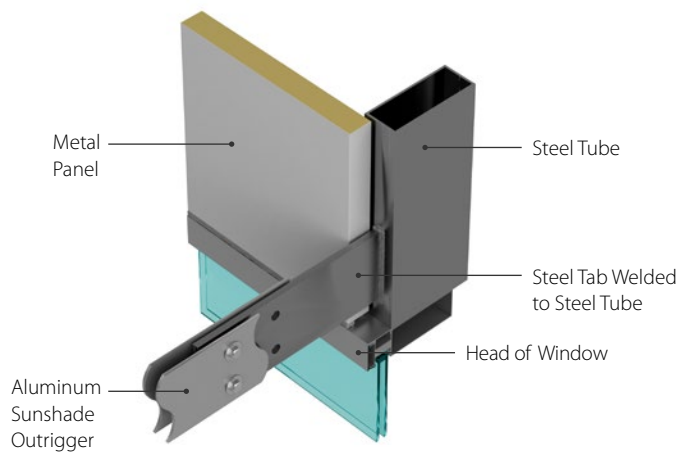
Bolted to Steel Behind Brick



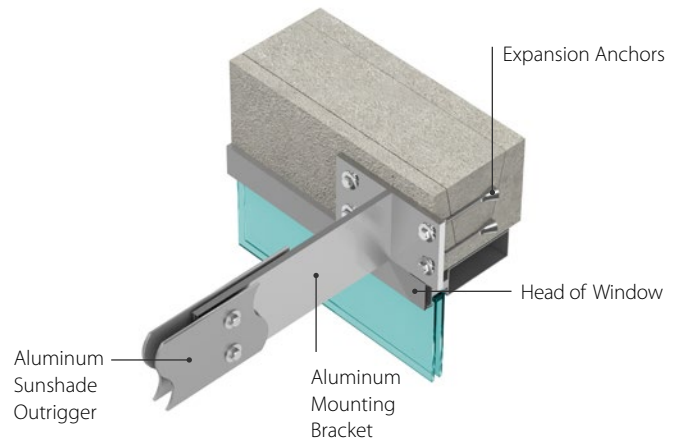
**CORPORATE OFFICE
WARREN, NJ**
Framed Sunshades



Steel Tab Welded to Steel Tube Behind Metal Panel



Bolted to Concrete Lintel



Beautiful facades *without headaches.*

Engineered solutions don't have to cause you to worry over structural loads or fastening requirements. When you work with CS early, we simplify the process from design through installation. We'll even work with the contractors on-site to ensure that your design perfectly integrates into any facade material and complies with codes.

Services & Support

- Design development
- Design assist
- Code review*
- Mockups
- Modeling
- Project management
- Signed and sealed drawings
- Engineering calculations

*DSA, OSHPD, Miami Dade Compliance, etc.





**UNIVERSITY MEDICAL
CENTER AT PRINCETON
PLAINSBORO, NJ**
Frameless Sunshades



CASE STORY

A clean look *for clean energy.*

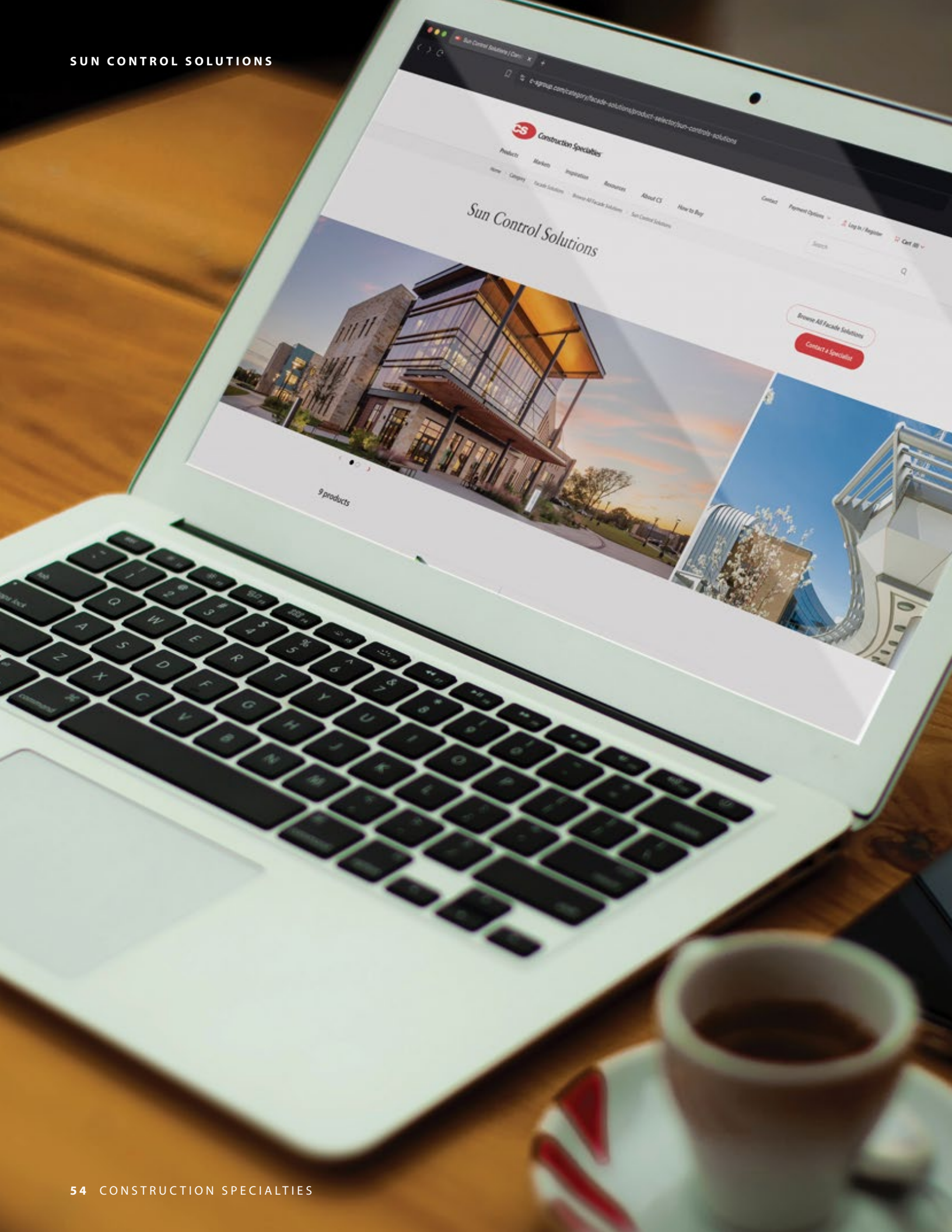
On the National Renewable Energy Laboratory's campus, Cantilevered Sunshades with lighted blades help a high-performance computing data center maintain world-class energy efficiency, operating at a power usage effectiveness (PUE) rating of 1.06 or better.



[*View The Full Story](#)

**NATIONAL RENEWABLE
ENERGY LABORATORY
GOLDEN, CO**
Cantilevered Sunshades





Need help *comparing?*

Discover the best solution for your project. Compare products, dimensions, performance, and more – all in one place. Not sure? Connect with a local representative for assistance.

Explore our model options for yourself.



*View Sun Control Solutions

Tackle your challenges with a local expert.



*Find Your Local Representative

ARCHITECTURAL PRODUCTS

Architectural *Screens*



Construction Specialties®

Added personality, *easy integration.*

There is no easier way to give your building character than by adding Architectural Screens by Construction Specialties. Both functional and aesthetically pleasing, decorative screens and vision barriers can change the entire personality of a building simply by adding depth and dimension to its facade.

ALUMATEX	A variety of decorative facade elements, perfect for completely concealing equipment or unsightly areas of the building
ECONOSCREEN®	An easy-to-install, roll-formed, aluminum blade screening choice for rooftop enclosures
VERT-A-CADE®	Use on or at ground level anywhere you need sight screening or a horizontal or vertical accent wall
BOLD LINE	Create dramatic and dimensional screenwalls utilizing different blade widths that add texture and enhance shadow lines
DECORATIVE SCREENS	A decorative element that allows air and light to pass through; often seen on building facades, parking garages, and rooftops

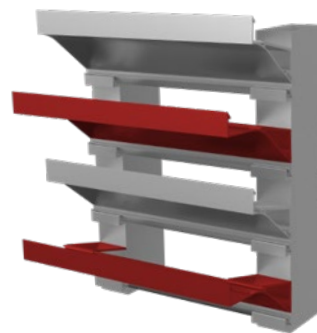




HUDSON LIGHTS PARKING
GARAGE FORT LEE, NJ
Vision Barrier Screens

Beauty from *every angle.*

Architectural Screens are beautiful and practical. Conceal mechanicals in plain sight with bold shapes and colors. Turn a parking garage into an urban sculpture. With 25 different patterns and unlimited color options, there's at least one solution that's sure to inspire you.



DON'T SETTLE FOR BORING

Talk to CS about your vision and we will help you make it a reality.



**TIMES UNION CENTER
ALBANY, NY**
Vert-A-Cade Vision Barrier

**150 NORTH RIVERSIDE
CHICAGO, IL**
Vert-A-Cade® Vision Barrier

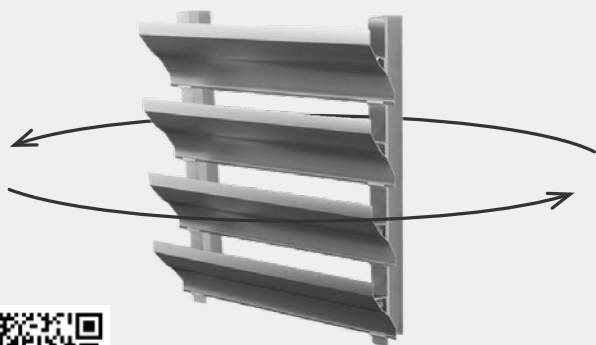


The form *has a function.*

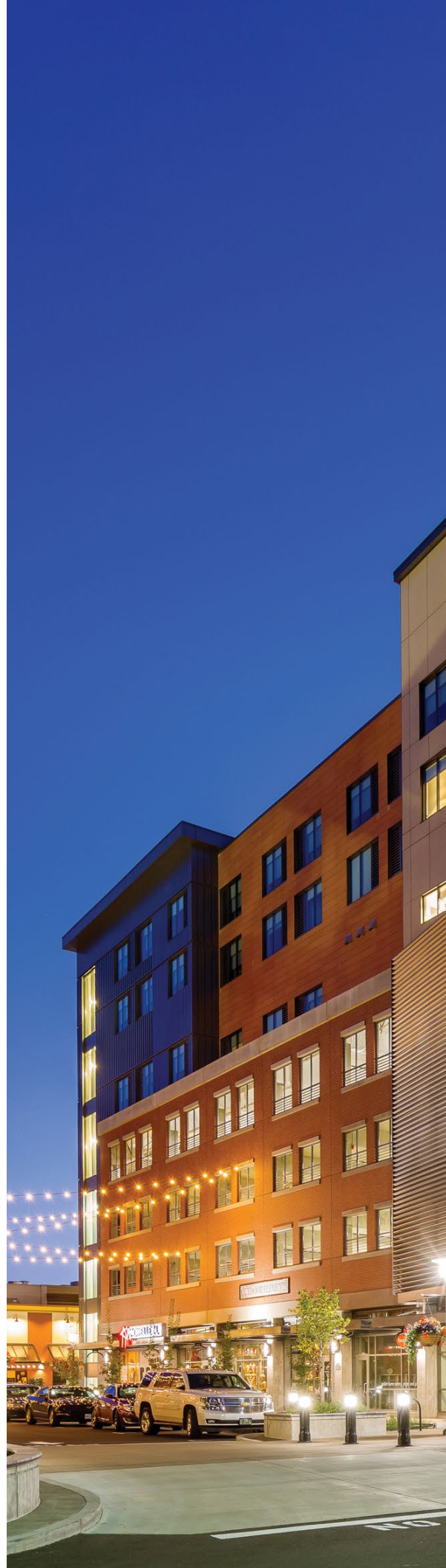
Beyond design considerations, it's important to consider the purpose of the screen or vision barrier. The material, the thickness, and the location will affect how much light and privacy is offered.

Key functions

- Blocks eyesores
- Light filtering
- Occupant privacy
- Sightline management
- Sight interruption or cut off



*Explore 3D Models





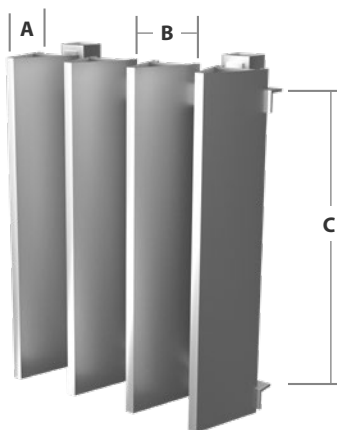
**HYATT EUGENE
EUGENE, OR**
Vert-A-Cade® Vision Barrier

INNY PACILLO PARKING
GARAGE AT ATWOOD
ANCHORAGE, AK
Vision Barrier Screens



In-house services

- Design assist
- Code certified engineering
- Wind load certified hardware



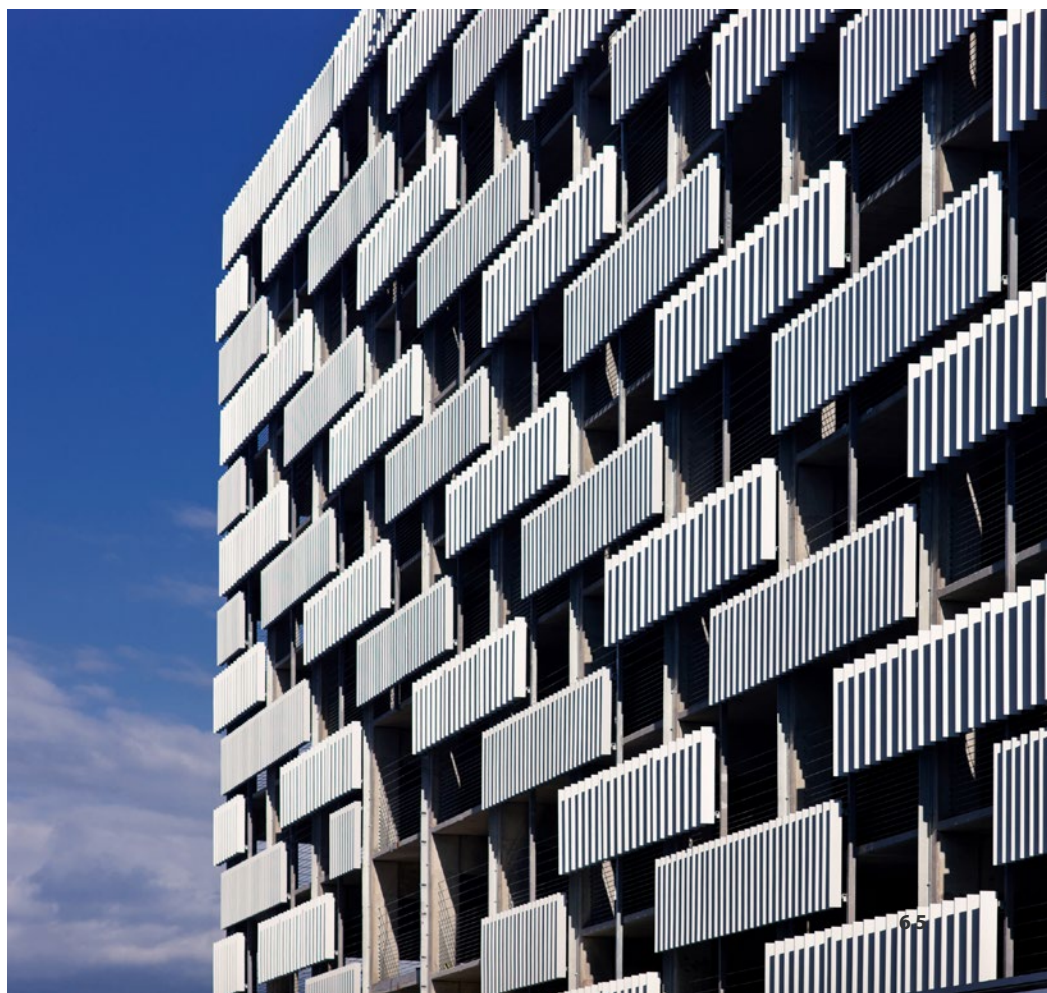
DIMENSIONS

- A:** Blade depth
B: Blade spacing
C: Blade span



Partnering to bring *your vision to life.*

If you can't find it in our catalog, don't worry. Our team of experts will help you execute nearly any concept with custom profiles, including blade spacing, orientation, and blade shape. Whether transforming an existing facade or starting from scratch, we'll help you with specifications, load calculations, measurements, and more. If you can design it, we can engineer it and help you turn the ordinary into the extraordinary.



COLLIN COLLEGE
WYLIE CAMPUS
WYLIE, TX
Bold Line Vision Barrier



Basic applications *don't have to be basic.*

From rooftops and equipment enclosures to parking garages—nothing transforms a facade better than adding the textures, shapes, and colors of architectural screens. They offer the practical solution of a decorative facade while still allowing for air and light to pass through, taking your space from eyesore to landmark.



Common applications

- Rooftops
- Parking garages
- Equipment enclosures
- Data centers
- Museums
- Hospitals
- Sports complexes



**ROSE HILL LUXURY APARTMENTS
NEW YORK, NY**

Myriad Continuous Decorative Screens
Vert-A-Cade® 8000 & 304
PL-5700 Louver
Custom Screens
Alumatex Tweed

CASE STORY

A building that *exudes classy vibes.*

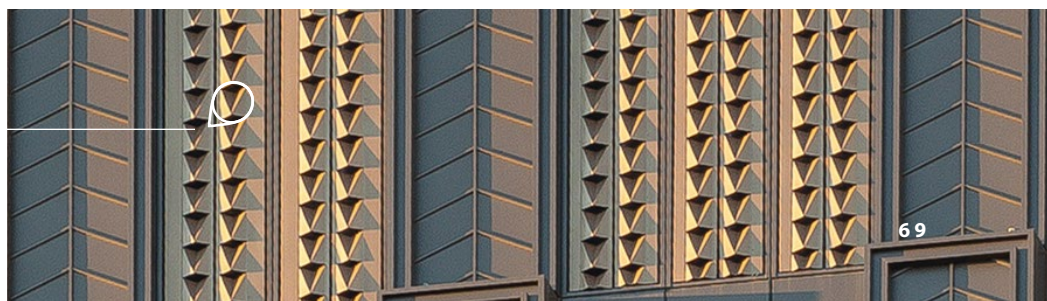
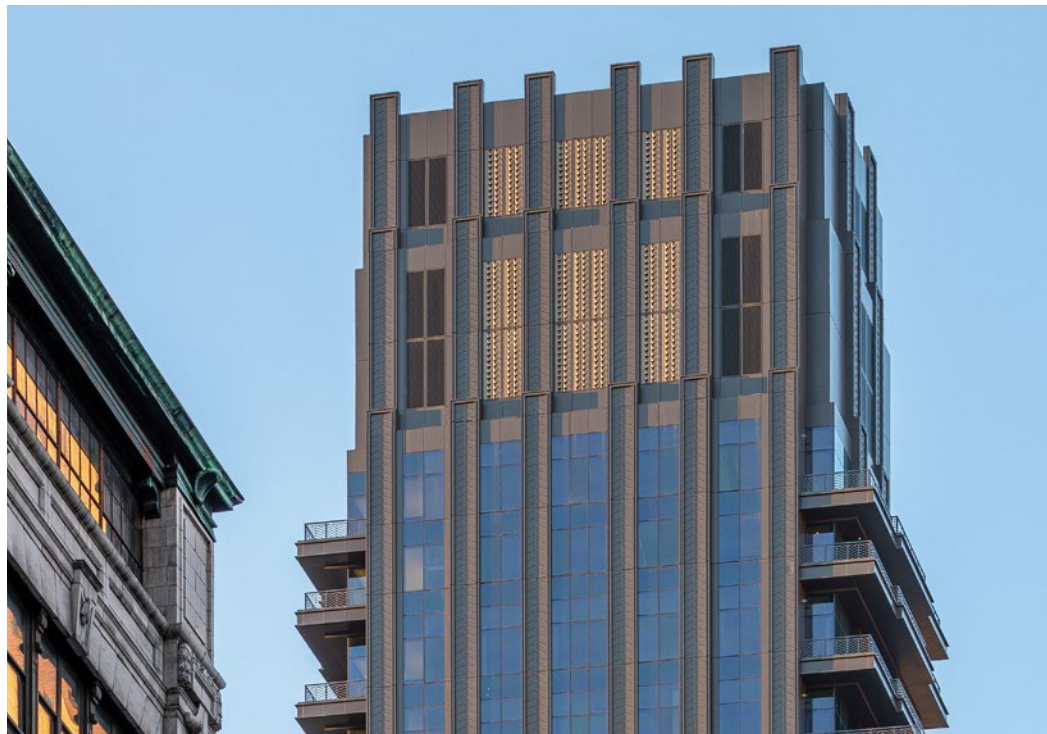
When the Rockefeller Group wanted to continue the legacy of creating iconic buildings in New York City, architects combined CS louvers with custom decorative screens to create elegance and glamour in this new residential building, Rose Hill. See how this project achieved its goal of creating a facade that is a modernized nod to old NYC.



[*View The Full Story](#)

PL-5700 LOUVER
INSTALLED BEHIND
CUSTOM SCREEN

ALUMATEX TWEED





A vertical photograph on the left side of the page shows a laptop and a smartphone resting on a wooden desk. The laptop screen displays a website with a search bar and a 'Cart' icon. The smartphone is a dark-colored model, possibly an iPhone, lying horizontally.

Need help *comparing?*

Browse our website to select the best solution for your project. Compare products, dimensions, performance, and more – all in one place. Not sure? Connect with a local representative for assistance.

Explore our model options for yourself.



*View Architectural
Screens Selector

Tackle your challenges with a local expert.



*Find Your
Local Representative

ARCHITECTURAL PRODUCTS

BetterBuiltStudio™



Construction Specialties®

BetterBuiltStudio™

Together, we will customize what we have
or build what we don't. Mix and match parts
and materials to suit your unique needs.

A program for those looking for a fresh take.



View The Brochure



In-house design services

Structural & Mechanical Engineering | Computer Modeling | Custom Detailing
Comprehensive Drawings | Custom Testing | Advanced Test Reporting | Installation Guidance
Sustainability Documentation | Code & Governance Navigation

ARCHITECTURAL PRODUCTS

Expansion *Joint Solutions*



Construction Specialties®

Cutting-edge *movement solutions.*

Construction Specialties has been solving complex structural movement challenges for over 45 years, applying our expertise in thermal, wind sway, settlement, and seismic building movement to help you design and build every kind of project type or scale.

Our expansion joint cover systems—whether typical or customized solutions—can answer any kind of floor, wall, ceiling, exterior, parking, or stadium need, meeting your project’s specific criteria with performance and style.

INTERIOR COVER SOLUTIONS	Floor Joint Systems
	Wall Joint Systems
	Ceiling Joint Systems
EXTERIOR COVER SOLUTIONS	Facade & Soffit Joint Systems
	Roof Joint Systems
	Exterior Floor & Traffic Grade Joint Systems
BARRIER SOLUTIONS	Fire Barrier Systems
	Vapor Barrier Systems
BASE ISOLATED SOLUTIONS	Moat Cover Systems
	Corridor Systems
	Seismic Rail Systems
	Roof Joint Systems
	Exterior Floor & Traffic Grade Joint Systems
	Wall Joint Systems





111 SOUTH MAIN
SALT LAKE CITY, UT
Wall & Floor
Joint Systems

Buildings move in *any number of ways.*

Thermal expansion and contraction, wind sway, settlement, or seismic activity all must be accounted for and managed in building design. Is the movement minimal or dramatic? How much might wind or thermal changes increase or offset each other? How close is a new structure to an existing one?

We know that these performance questions come first when choosing expansion joint systems, and we always recommend talking with our experts early in design to make the best choices. CS works closely with our clients to understand the severity and interdependence of each building movement factor, and the impact of current and projected climate and geological conditions to help you choose the right product.



*Scan here to see CS' resources for choosing expansion joint solutions based on building movement types.





ADOBE OFFICE
LEHI, UT
XLS with
Glass infill



**DE YOUNG MUSEUM
SAN FRANCISCO, CA**
Facade Joint System

D



Performance that looks *particularly good.*

When it comes to structural integrity, you can't sacrifice performance—and you don't have to sacrifice design aesthetics either.

From standard 1" systems to highly engineered seismic expansion joint solutions for sky bridges and base isolated structures, CS offers color and finish matches that integrate joint covers into your facade, floors, and many other applications. And we can design, test, and fabricate custom assemblies when what's on the shelf doesn't quite fit your aesthetic.



*View our
project gallery.

We don't just say "we can," *we make sure we do.*

At the start of your project, CS provides design assist services that help you assess needs and select or create joint cover solutions that perform and look the best. Our testing methods give architects and owners confidence in their choices.

The middle and end of the project are no less critical to long-term success. Our constant attention to project management catches and solves delivery or cost issues before they land on your doorstep. We work with GCs to modify attachment methods and provide training so installations go smoothly. It's all about making good on what we promise we can help you accomplish.







**CALIFORNIA MEMORIAL STADIUM
BERKELEY, CA**
Custom Seismic Treads & Risers



Rigorous, comprehensive *testing means confidence.*

At CS, we don't design sacrificial solutions. We look at your parameters and develop resilient systems that will last for the life of your project. We look ahead to the safety of your occupants, to ensure they are protected in any type of movement scenario. Our systems are designed and tested to enhance the performance of the floors, walls, and ceilings they are attached to.

Fire and wind tests offer peace of mind for occupant safety and building integrity; rolling load tests help to prove long term performance of parking solutions and other heavy duty applications subjected to repetitive vehicular traffic. And we help you stay on top of requirements through code reviews or regulatory coordination related to product materials, assembly, and installation.



CYCLE TABLE

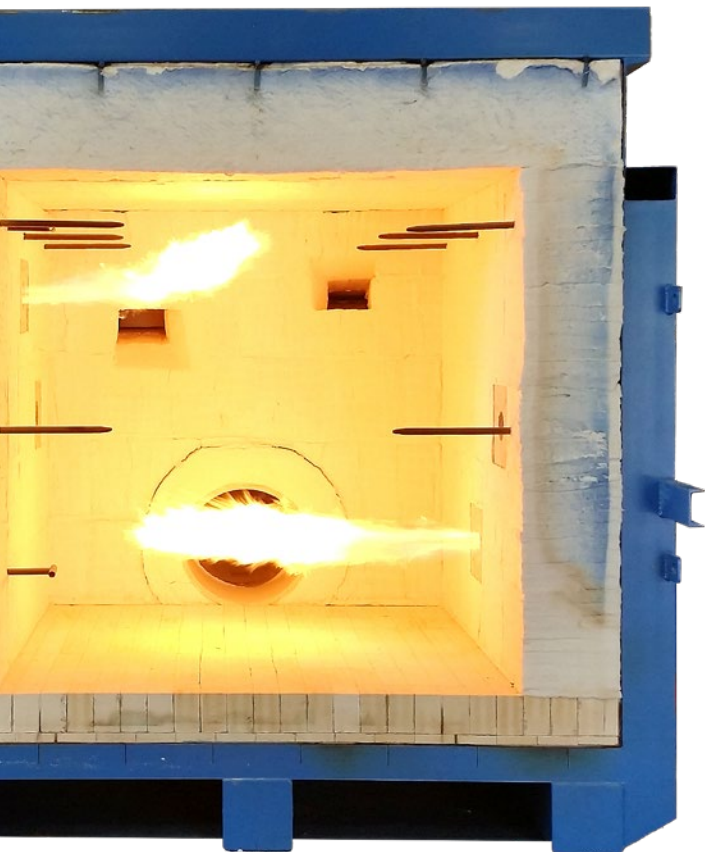
Services & Support

- Trade coordination
- Cycle testing
- Fire testing
- Rapid prototyping
- BIM modeling
- Field support

We're serious *about safety.*

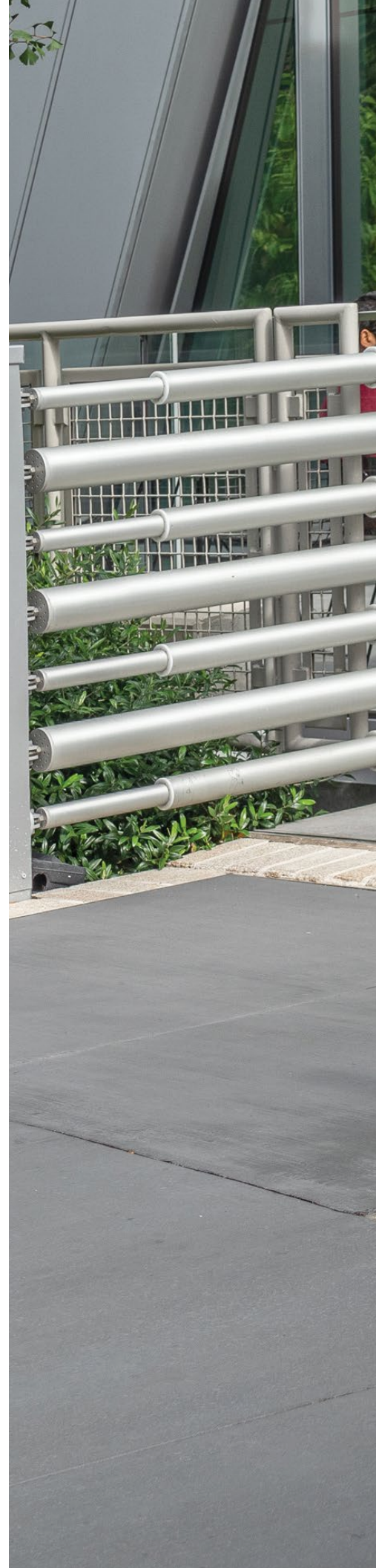
Expansion joint systems are life-safety products at heart. CS treats the selection and design process for covers, rails, stairs, and other components with the utmost seriousness, which means we have to think about worst-case scenarios and long term resilience.

Our design teams look at your parameters to develop solutions that will last through your project's lifetime, protecting your occupants through any type of movement scenario.



TEST FURNACE

CS utilizes our in house fire test furnace to develop cutting edge life safety products and verify complex job specific conditions with real world fire testing.



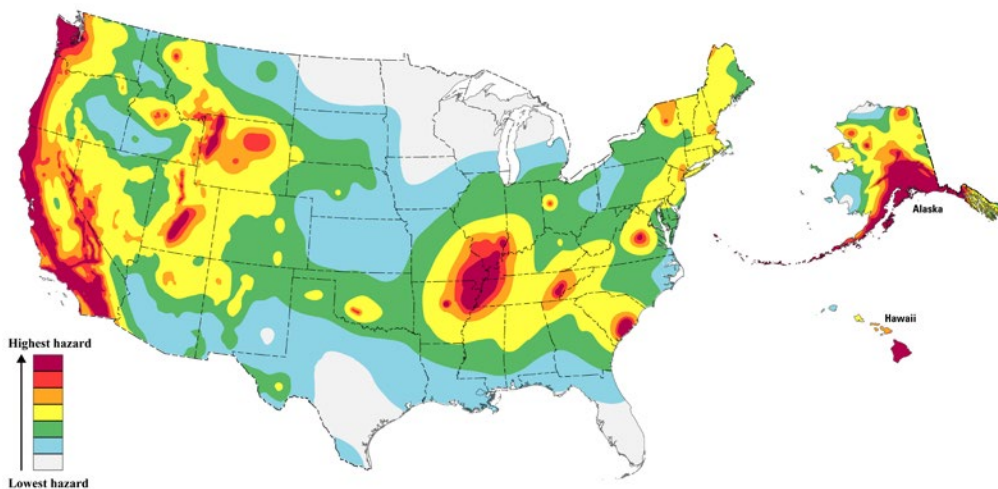


**SALESFORCE
TRANSIT CENTER
SAN FRANCISCO, CA**
Floor Joint System
& Seismic Rail

Managing movement *from coast to coast.*

Managing movement is a part of building design and construction across the U.S., with virtually no areas escaping the impact of seismic activity, weather, and climate change.

CS products not only span the variety of needs from region to region, but our national-level expertise working with different building codes and structural engineering requirements means we can help you solve complex issues for buildings from Atlanta to Boston to Chicago to LA.



USGS HEAT MAP

The U.S. Geological Service's 'heat map' illustrates the widespread nature of potential seismic impact across the country. Not every area looks like the fault-riddled West Coast, but most highly-populated areas have moderate risk, compounded by climate change-induced severe weather events.





**CITY CREEK CENTER
SALT LAKE CITY, UT**
Floor & Facade
Joint Systems



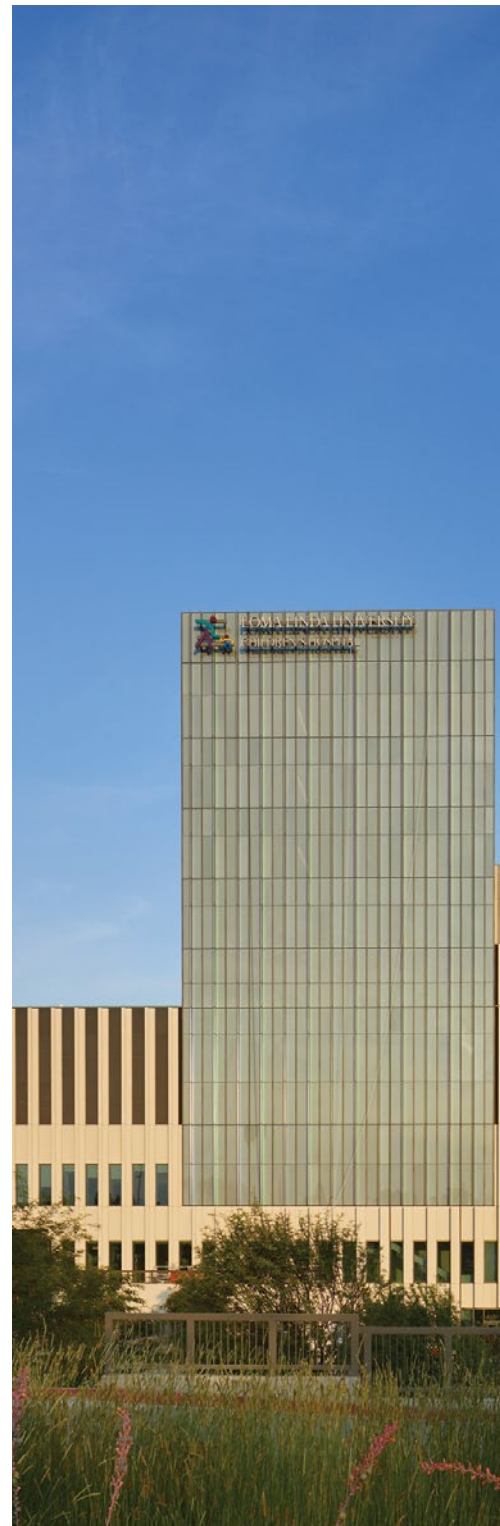
CASE STORY

Modern moats *keep people safe.*

The Loma Linda University Health system is a Level I trauma center in Southern California. When the inevitable earthquake strikes, Loma Linda will be ground zero for emergency services. The team created an unmatched engineering marvel—two healthcare buildings with a shared five-story podium that can move six inches vertically and 42 inches laterally without suffering structural damage. CS developed a system of expansion joint covers to integrate with the design and provide a stable walking surface all the way up to the building's edge.



*View the
full story.



"All of a hospital's systems need to be functional after an earthquake, it's not just about the structure."

—SIMON REES
SE, ARUP





A vertical photograph on the left side of the page shows a tablet and a smartphone resting on a wooden desk. The tablet is in the upper left, displaying a website with a search bar and navigation icons. The smartphone is in the lower left, showing a dark screen. The background is a warm, textured wooden surface.

Need help *comparing?*

Browse our website to select the best solution for your project. Compare products, dimensions, performance, and more – all in one place. Not sure? Connect with a local representative for assistance.

Explore our model options for yourself.



*View Expansion Joint Selector

Tackle your challenges with a local expert.



*Find Your Local Representative

People.
Buildings.
Better.



Construction Specialties®

c-sgroup.com | 800.233.8493



Front + Back Cover
**VASSAR BROTHERS
MEDICAL CENTER
POUGHKEEPSIE, NY**