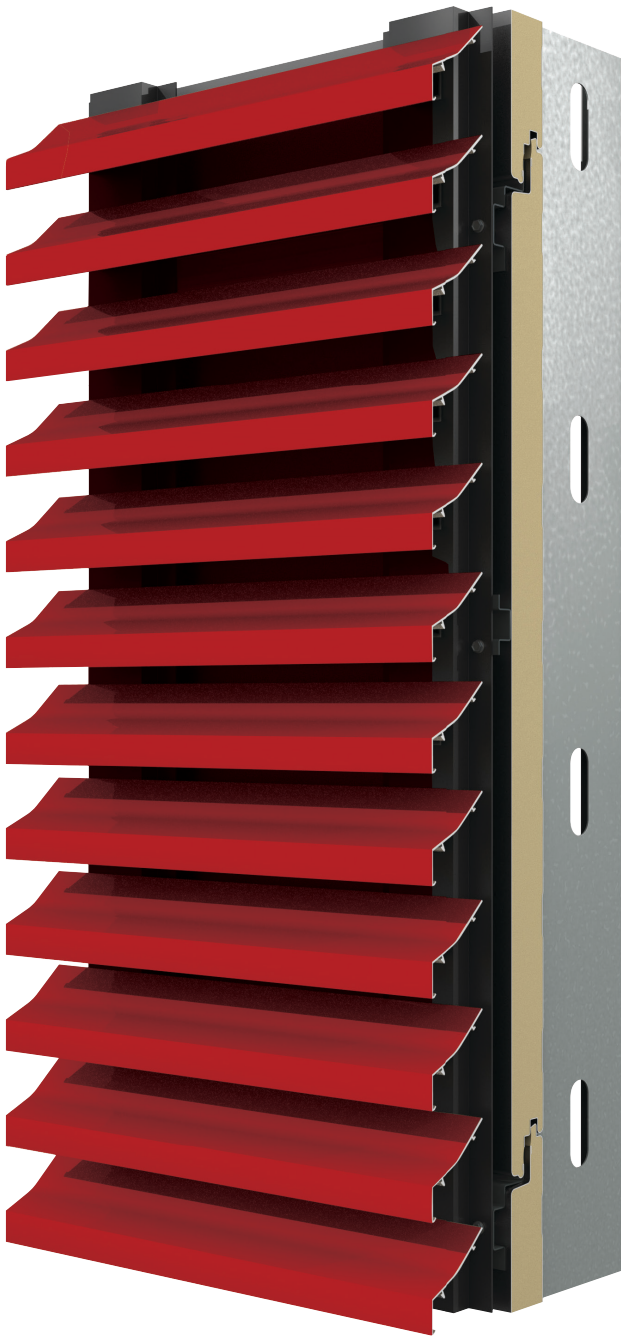


MetalWrap™ Series Louvers

CS Louvers & CENTRIA Wall Systems

Louvers with true wall performance in one system



.....

The integrated CS Louver MW-7315 is designed for large areas where the louvers are more than a performance requirement, they are an architectural feature.

CS' integrated Louver system utilizes Storm Resistant MW-7315 front blades over CENTRIA MetalWrap Series insulated back up panel system in the inactive louver area.

The MW-7315 is ideal for large runs of continuous louvers with a high percentage of inactive louvers.

Use in areas with conditioned/occupied space behind, where an insulated wall is required. Seamlessly transition between active and inactive louver to maintain a uniform appearance.

Two model options:

.....

MW-7315

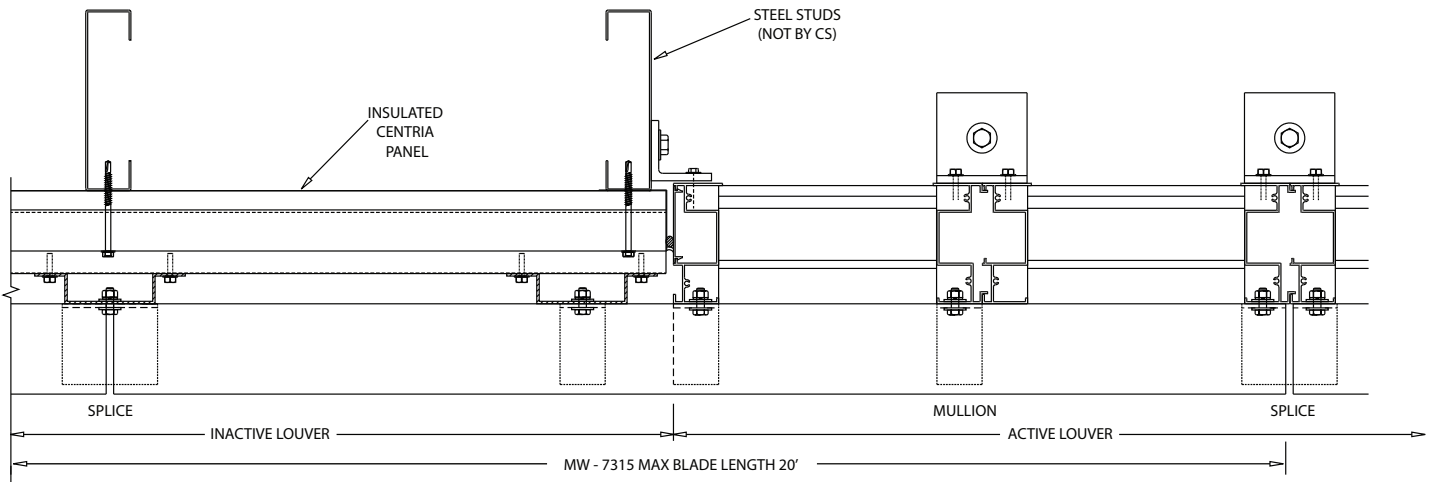
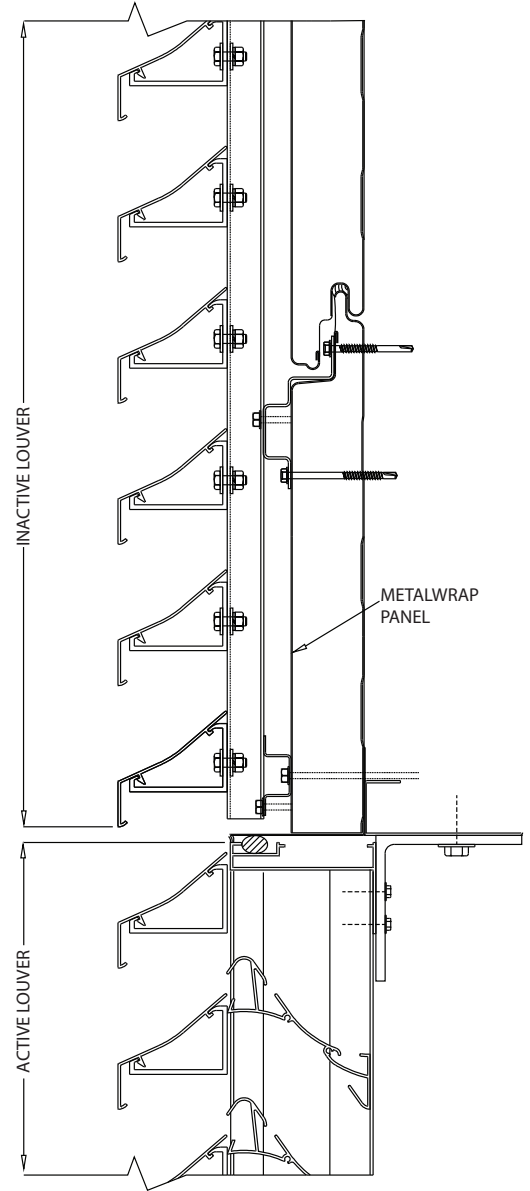
MW-9615



MW-7315

CS & CENTRIA
Integrated MW-7315 MetalWrap Series
Louver features and benefits:

- Tested wall system
- Provides water, vapor and air barrier
- High R-value - 2" and 3" thick panels
- Thermally broken
- Continuous front blades
- Blades ship loose in up to 20' lengths
- Inactive areas are visually indistinguishable from active areas
- CS Storm Resistant MW-7315 Louvers in active areas

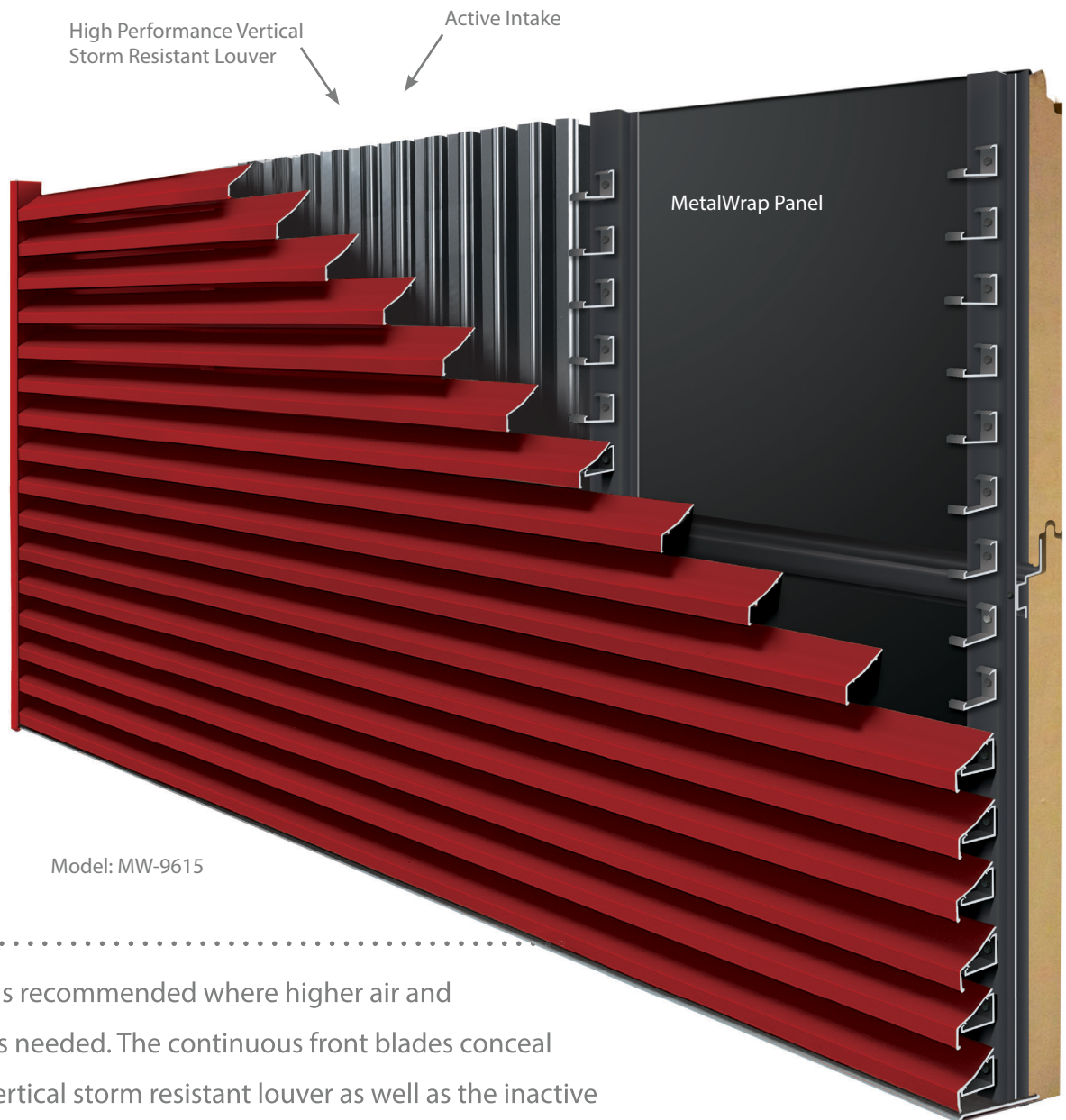


HORIZONTAL TRANSITION - CS METALWRAP SERIES LOUVER

New CS MW-9615

High Performance Louver & CENTRIA Wall Systems

Louvers with true wall performance in one system



Model CS MW-9615 is recommended where higher air and water performance is needed. The continuous front blades conceal a high performing vertical storm resistant louver as well as the inactive CENTRIA MetalWrap Series backup panel system.

The MW-9615 is ideal in areas where high performance active intake and exhaust louvers are necessary. Use CENTRIA MetalWrap panel in areas with conditioned/occupied space behind, where a sealed insulated wall is required. Continuous front blades up to 20' long provide a seamless appearance at both active and inactive louver areas.



For MetalWrap details refer to CENTRIA MetalWrap Series literature



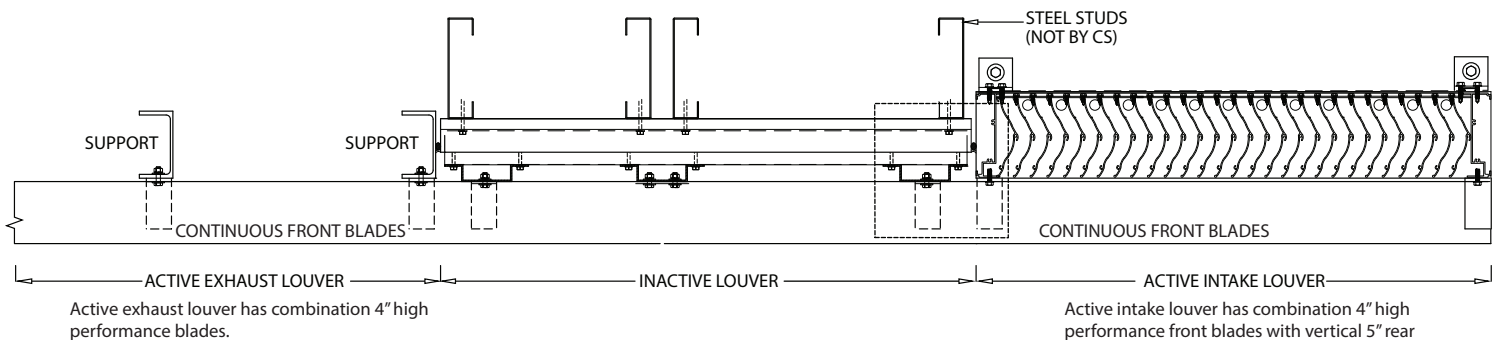
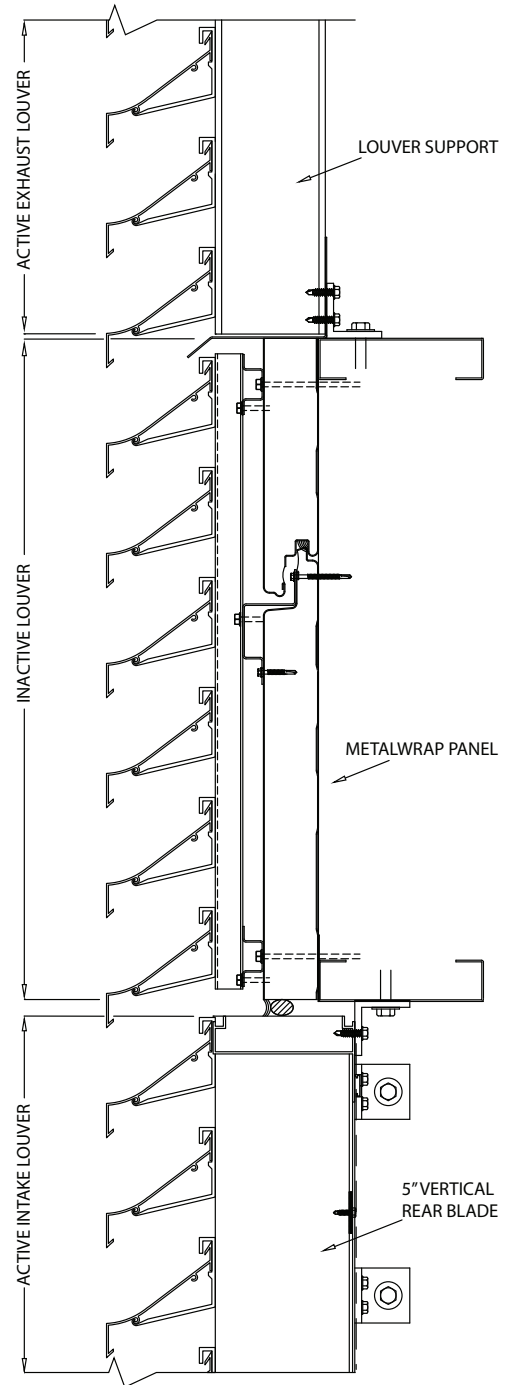
49 Meeker Ave, Cranford, NJ 07016-3198, 800-526-6930
www.c-sgroup.com [f](#) [t](#) [in](#) csinonline



MW-9615

CS & CENTRIA
Integrated MW-9615 MetalWrap Series
Louver features and benefits:

- Tested wall system
- Provides water, vapor and air barrier
- High R-value - 2" or 3" thick panels
- Thermally broken
- Continuous front blades
- Inactive areas are visually indistinguishable from active areas
- High performance CS Vertical Storm Resistant
- Louvers provide superior air and water performance in active areas



HORIZONTAL TRANSITION - CS METALWRAP SERIES LOUVER