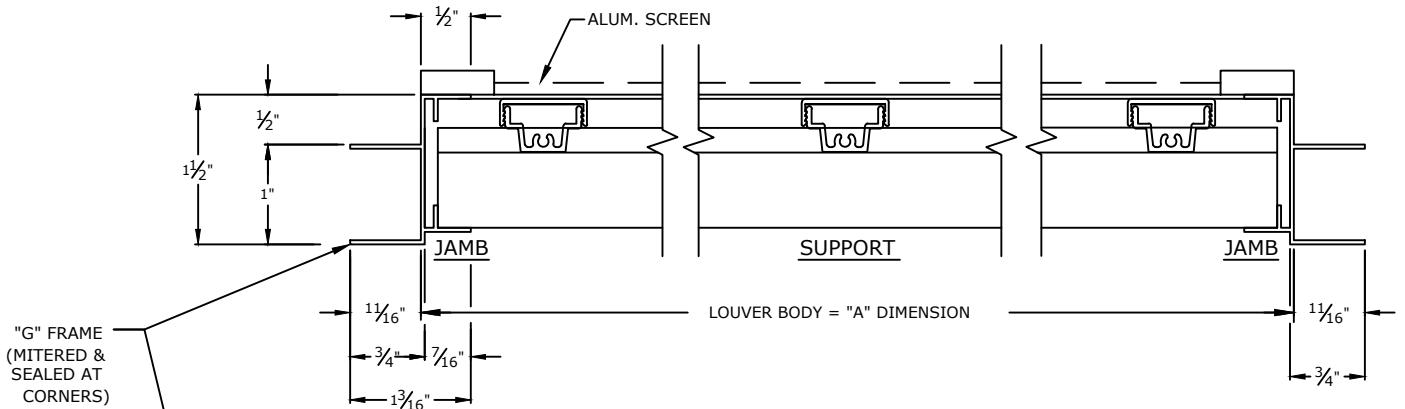
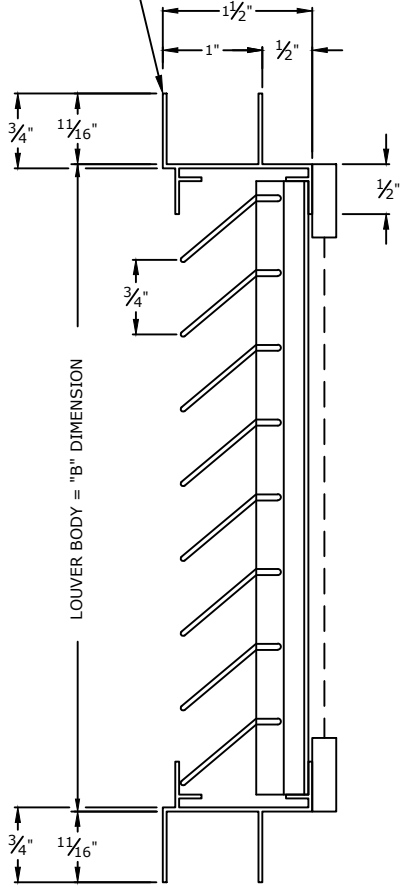


THINLINE LOUVER MODEL 1302G



PLAN VIEW
NTS



VERTICAL SECTION
NTS

SCREENS

- SCREEN NOT REQUIRED
- SCREEN REQUIRED
- INTERIOR MOUNTED
- EXTERIOR MOUNTED
- BIRDSCREEN: 1/2" MESH
.063 DIA. ALUM. WIRE
(MILL FINISH)
- INSECT SCREEN: 18x16
ALUM. MESH (MILL FINISH)

FINISHES

- STANDARD MILL
- FLUOROPOLYMER POWDER COAT
(NOT AVAILABLE IN 600XL OR 700)
- KYNAR (500),(600XL)or(700)
- (1) OF CS STD. COLORS
- CUSTOM COLOR, CS REQUIRES
A COLOR CHIP FOR MATCHING
- BRONZE ANODIC (DARK OR MED.)
- CLEAR ANODIZE
- OTHER _____

CS EXTRUDED ALUMINUM THINLINE LOUVER MODEL 1302G
TO BE 1 1/2" DEEP. BLADES AND FRAME TO BE FABRICATED
FROM 6063-T6 ALLOY. ALL FASTENERS TO BE STAINLESS STEEL.

UNSUPPORTED BLADE LENGTH = @ PSF.

MARK	QTY.	"A" DIM. (LOUVER BODY)	"B" DIM. (LOUVER BODY)	NUMBER OF SUPPORTS	LOUVER LOCATION	REMARKS	
Construction Specialties, Inc. 3 Werner Way Lebanon, New Jersey 08833 (800) 233-8493						CHECKED BY:	
						PROJECT:	DRAWN BY:
						CUSTOMER:	DATE:
						ARCH'T:	DWG. NO:
AGENT:						SHEET OF	