

ALS-M

TECHNICAL DATA:

Aluminum

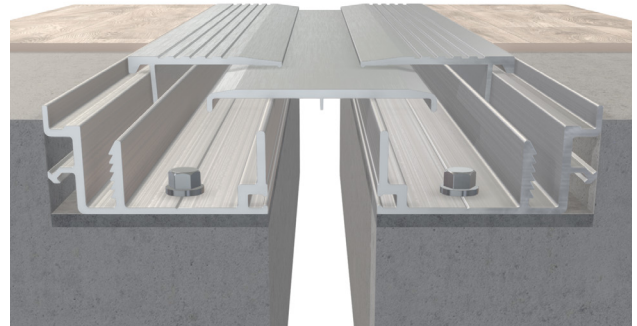
- Extrusion – CS uses multiple alloys & tempers which are established to be the most appropriate for the given use of individual parts. Will be one of the following: (6063-T5, T6, T52) (6061-T5, T6, T51) (6105-T5, T6) (6005-T5) (6005A-T5, T61), ASTM B221

Standard Loading

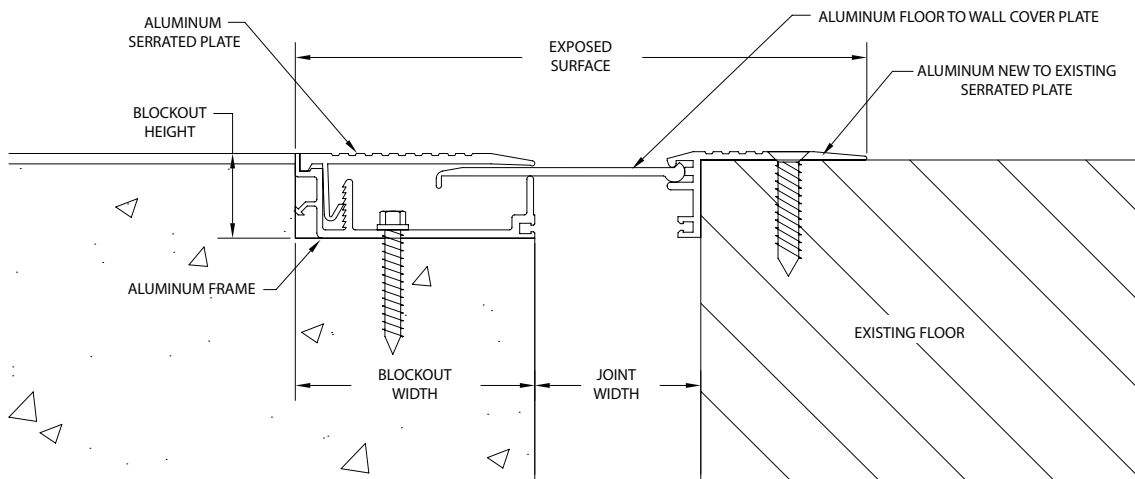
- 500 lbs.



Capable of Lateral Movement



MODEL	JOINT WIDTH	MINIMUM OPENING	MAXIMUM OPENING	EXPOSED SURFACE	BLOCKOUT WIDTH	BLOCKOUT HEIGHT
ALS-100M	1.00" (25mm)	0.50" (13mm)	1.63" (41mm)	5.00" (127mm)	2.00" (51mm)	1.00" (25mm)
ALS-200M	2.00" (51mm)	1.00" (25mm)	3.00" (76mm)	6.88" (175mm)	2.88" (73mm)	1.00" (25mm)
ALS-300M	3.00" (76mm)	1.75" (44mm)	4.75" (121mm)	8.88" (226mm)	3.88" (99mm)	1.00" (25mm)
ALS-400M	4.00" (102mm)	2.50" (64mm)	5.50" (140mm)	9.88" (251mm)	3.88" (99mm)	1.00" (25mm)



ALS-M