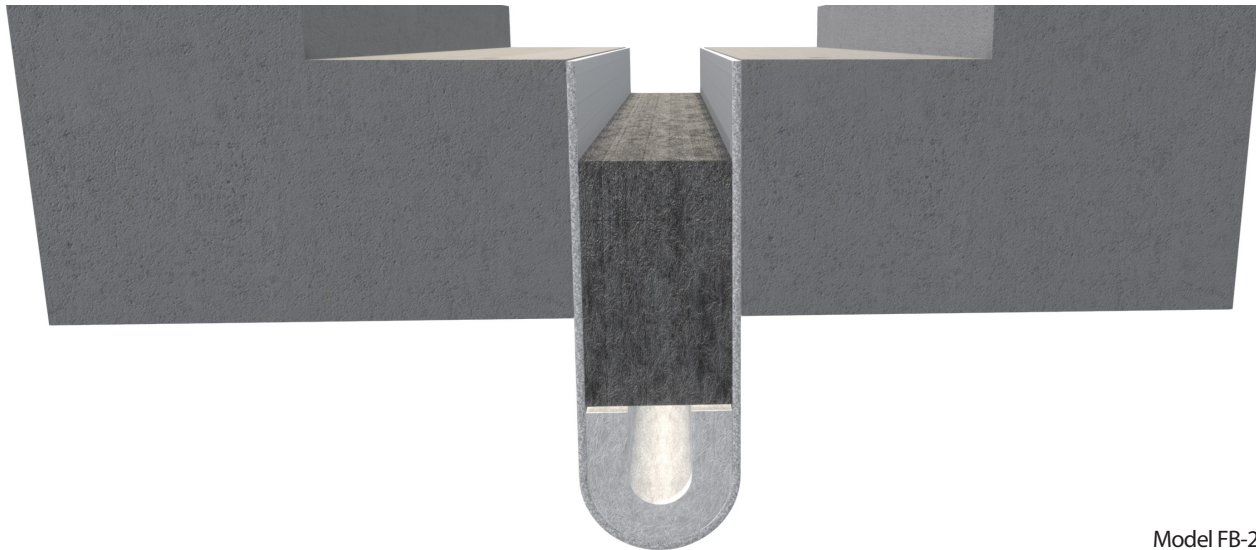


FB-22 Series



Model FB-22

This fire barrier is designed for 1" - 4" floor expansion joints. Our third-party listing ensures a 2-hour rating for 1" - 4" joints and up to 3-hour rating for 1" - 2" joints. This blanket type fire barrier accommodates dynamic movement without degradation of the material. FB-22 does not have any mechanical fasteners and ships in longer stock lengths to minimize splicing and cut back on installation time.

Advantages

- Tested and listed by a third party for 2 or 3-hour floor applications (model specific)
- Minimizes smoke passage
- No mechanical fasteners required
- Quick and easy installation
- Simple splicing
- Transitions easily to FB-24 wall fire barrier for a full system solution



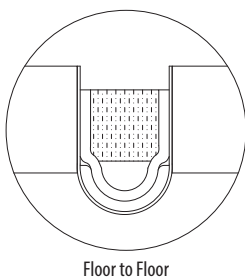
View 3D Model →

FB-22 Series

Product Details

- For 1" - 4" (25.4mm - 101.6mm) nominal floor joints
- 25' (7.62m) stock length

Model Details



Certifications

- Performance Standards: UL-2079, ASTM E1399
- Code Compliance: UBC, SBC, BOCA, IBC

RATING	MAX OPEN	APPLICATION	FB-22 LISTING NUMBER
2HR/3HR	1 ½" - 3"	Floor	CSI/EJCA 120-04
			CSI/EJCA 180-02
2HR	4 ½" - 6"	Floor	CSI/EJCA 120-04

Warranty

- Standard Five-year Warranty



Learn More

