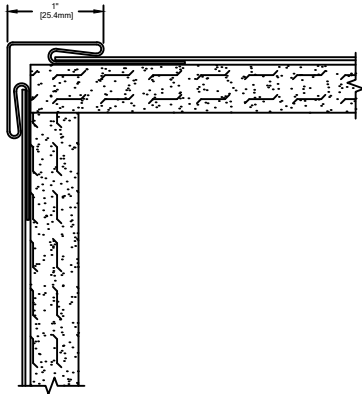


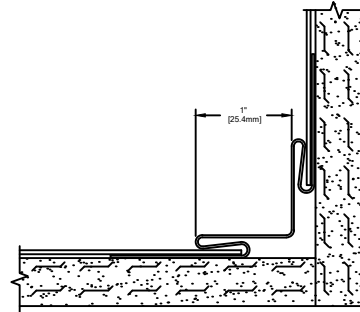
**NOTES:**

1. STAINLESS STEEL SHEET TRIMS ARE 10'-0" STOCK LENGTH.
2. FIELD TRIM AS REQUIRED.
3. FINISH TO BE #4 BRUSHED.
4. MAT'L TO BE 24GA 304 STAINLESS STEEL
5. GAP WILL ACCOMMODATE 11GA-26GA STAINLESS STEEL SHEET



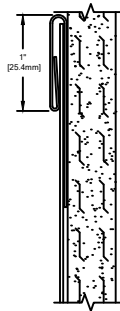
OUTSIDE CORNER TRIM  
(80S267001)

NO. REQ'D: @ 10' \_\_\_\_\_



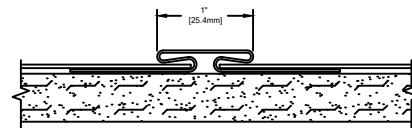
INSIDE CORNER TRIM  
(80S265001)

NO. REQ'D: @ 10' \_\_\_\_\_



WAINSCOT TRIM  
(80S258001)

NO. REQ'D: @ 10' \_\_\_\_\_



JOINT TRIM  
(80S259001)

NO. REQ'D: @ 10' \_\_\_\_\_



**Construction Specialties™**

Hughesville, PA | 800.233.8493 | 570.546.5941  
Mississauga, ON | 888.895.8955 | 905.274.3611  
[www.c-sgroup.com](http://www.c-sgroup.com)

© Copyright 2022 Construction Specialties, Inc.

PROJECT:

JOB NO.:

CUSTOMER:

REP:

DRAWN BY:

REVISION:

F&F:

DATE:

SHEET NO: