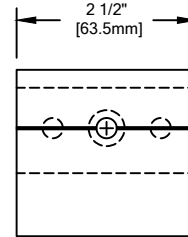
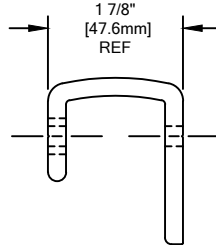
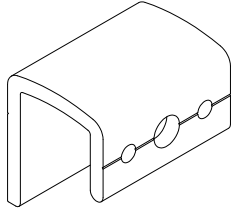


RAIL: ALUMINUM RAIL 10'-0" LONG PART# 24A241000	BRACKETS: ALUMINUM MOUNTING BRACKET BRACKET PART #24F180003 NO. BRACKETS REQUIRED:	BRACKETS: EXTRUSION PART #: 24A239000	BRACKET HARDWARE: 1/4-20 x 3/4" HEX HD MS (90H959002) 1/4-20 HEX NUT (90H001001) 1/4" FLAT WASHER (90H012003)	WALL MOUNT HARDWARE: 1/4-20 x 3" ROUND HEAD BOLT (90H968002)
QTY:	QTY:	QTY:	QTY:	QTY:

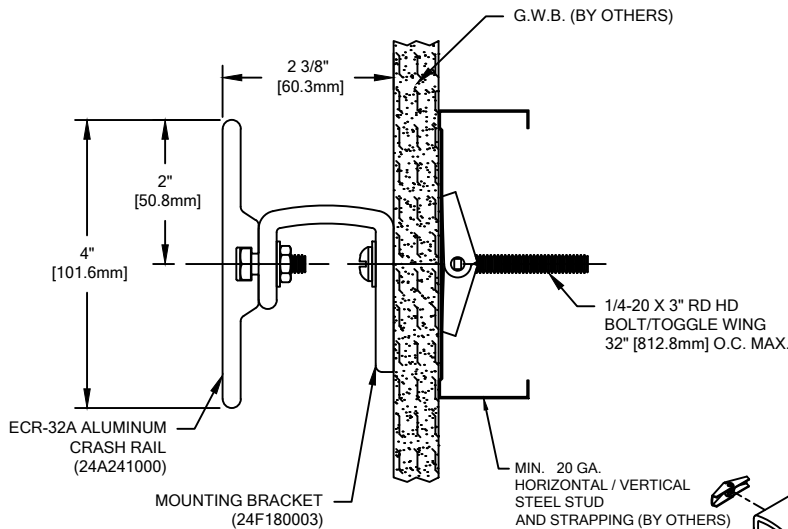


**CONTRACTOR NOTES:**

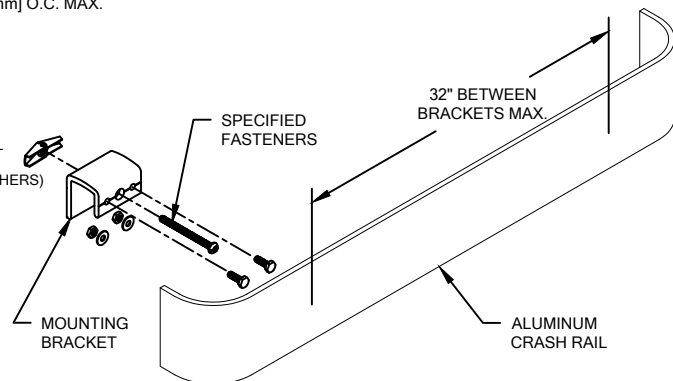
1. ALL DIMENSIONS MUST BE FIELD VERIFIED TO A 1/16" TOLERANCE.
2. DIMENSIONS TO BE OBTAINED AT THE ELEVATION OF MATERIAL LOCATION. ALSO, MOUNTING CONDITION TO BE VERIFIED. FABRICATION CANNOT BEGIN WITHOUT THIS INFO.
3. SOME DIMENSIONS SMALLER THAN 16" MAY BE TOO SMALL TO FABRICATE.


**NOTES:**

1. ALL RAIL TO BE SUPPLIED PREFABRICATED TO REQUIRED LENGTH. ALL END CAPS TO BE FACTORY FORMED TO SUIT FIELD CONDITIONS.
2. INSIDE AND OUTSIDE CORNERS ARE NOT AVAILABLE FOR ECR-32ANE.
3. HOLE SPACING TO BE DETERMINED BY UNIT LENGTH, SPACING NOT TO EXCEED 32" ON CENTER.
4. ALL MOUNTING HARDWARE TO BE SUPPLIED FOR FIELD ASSEMBLY AND INSTALLATION.
5. MATERIAL:  
CS ECR-32A CRASH RAIL SHALL BE MANUFACTURED FROM A 4" WIDE X 1/4" THICK ALUMINUM EXTRUSION, #4 SATIN FINISH DESIGNED FOR ELASTIC DEFORMATION UNDER IMPACT WITHOUT DAMAGING THE WALL TO WHICH IT HAS BEEN MOUNTED.
6. FINISH:  
THE ECR-32A CRASH RAIL SHALL BE FURNISHED WITH A 120 GRIT MECHANICAL & A 204RL1 CLEAR ANODIZE FINISH



**ECR-32A  
NON-EXPOSED FASTENERS**



 <p>Hughesville, PA   800.233.8493   570.546.5941 Mississauga, ON   888.895.8955   905.274.3611 <a href="http://www.c-sgroup.com">www.c-sgroup.com</a></p> <p>© Copyright 2018 Construction Specialties, Inc.</p>	<b>PROJECT:</b>	<b>REVISION:</b>
	<b>JOB NO.:</b>	<b>F&amp;F:</b>
	<b>CUSTOMER:</b>	
	<b>REP:</b>	<b>DATE:</b>
	<b>DRAWN BY:</b>	<b>SHEET NO:</b>