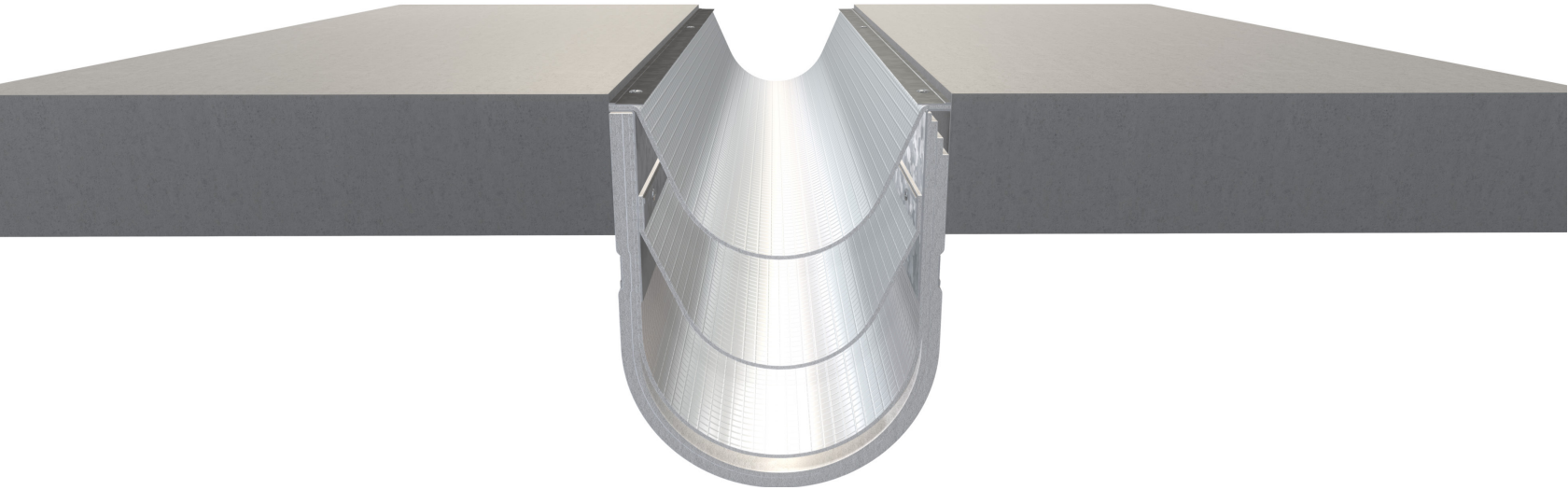


## FB-97 Series



Model FB-97

FB-97 fire barrier features a multi-layer design that can be installed with our applicable floor and wall cover systems up to 72" max open. It has been tested and proven to provide up to 2-hour fire endurance rating and minimizes smoke passage. The system also accommodates dynamic movement without degradation of the material.

### Advantages

- Provides up to 2-hour fire endurance rating
- Minimizes smoke passage
- Applicable for horizontal and vertical rated expansion joints for buildings and parking decks
- Accommodates dynamic movement without degradation of the material
- Optional lateral shear
- Optional chase wall applications



[View 3D Model](#) →

## FB-97 Series

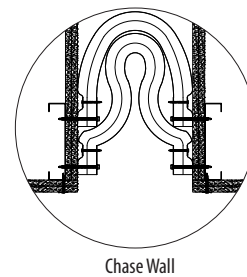
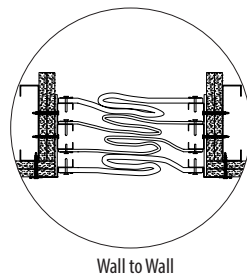
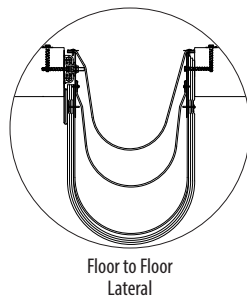
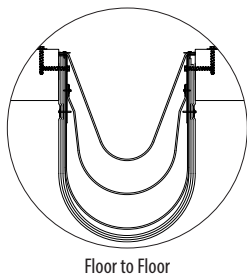
### Product Details

- Joint sizes range from 7" to 36" (177.8mm to 914.4mm)
- 10' (304.8cm) stock lengths

### Certifications

- Performance Standards: UL-2079, ASTM E-1966, ASTM E1399
- Code Compliance: UBC, SBC, BOCA, IBC

### Model Details



### Warranty

- Standard Five-Year Warranty

RATING	NOMINAL JOINT SIZE	APPLICATION	COMPRESSION	EXTENSION	FB-97 LISTING NUMBER
2HR	7" - 12"	Floor	50%	50%	FF-D-2003
		Lateral Floor	80%	95%	FF-D-2004
	13" - 24"	Floor	50%	50%	FF-D-3005
		Lateral Floor	80%	95%	FF-D-3006
	25" - 36"	Floor	50%	50%	FF-D-4001
		Lateral Floor	80%	95%	FF-D-4002
	7" - 12"	Gypsum Wall	80%	90%	WW-D-2007
		Concrete Wall	80%	90%	WW-D-2008
	13" - 24"	Gypsum Wall	80%	90%	WW-D-3007
		Concrete Wall	80%	90%	WW-D-3008
	25" - 28"	Gypsum Wall	80%	90%	WW-D-4001
		Concrete Wall	80%	90%	WW-D-4002
	12" - 17"	Chase Wall	50%	100%	WW-D-2010
	18" - 24"	Chase Wall	80%	100%	WW-D-3009
25" - 36"	Chase Wall	80%	100%	WW-D-4003	



Learn More →