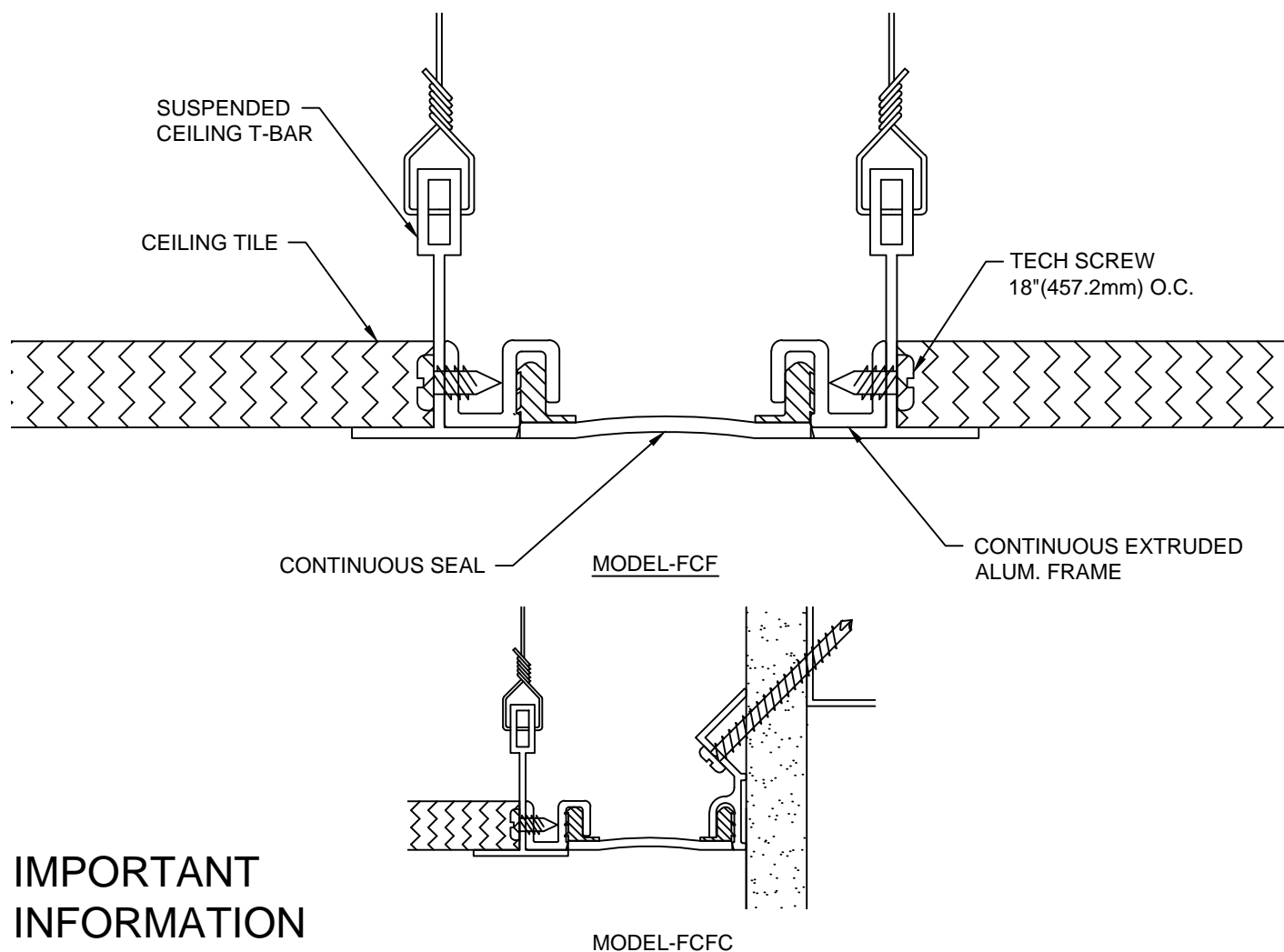


# MODEL FCF-100 THRU 200 INSTALLATION INSTRUCTIONS



## IMPORTANT INFORMATION

Prior to the commencement of Installation, all materials **MUST** be inspected for Damage. Any damage must be reported to CONSTRUCTION SPECIALTIES, INC., as soon as possible, so that replacement materials may be furnished without delay.

All work must be completed as per Architect's Approved "Shop Drawings", and in accordance with these Installation Instructions. When installation is complete, all materials must be protected from damage until the Architect's FINAL INSPECTION.

All materials should be arranged in the order that they are to be installed. All hardware required for each portion of the work should be placed with the appropriate materials.

Please review all Approved Shop Drawings and this Document to familiarize yourself with all the details and components of this assembly.

## IMPORTANT:

**READ THROUGH ALL INSTRUCTIONS PRIOR TO STARTING INSTALLATION**

9/4/13



**Construction Specialties™**

6696 Route 405 Highway, Muncy PA 17756  
(800) 233-8493 Fax (570) 546-5169 www.c-sgroup.com

This document is the property of Construction Specialties, Inc. and contains CONFIDENTIAL PROPRIETARY INFORMATION that is not to be disclosed to third parties and is not to be used without approval in writing from Construction Specialties, Inc.

Notes:

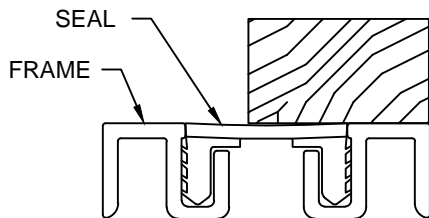
Before beginning installation, review the architectural drawings and approved Construction Specialties Inc. shop drawings to familiarize yourself with the joint cover models and locations.

Check all of the joint cover components to confirm that the correct joint cover model and size have been received. Also, check for materials that may have been damaged during shipping. Report all incorrect and/or damaged components to C/S at 800-233-8493.

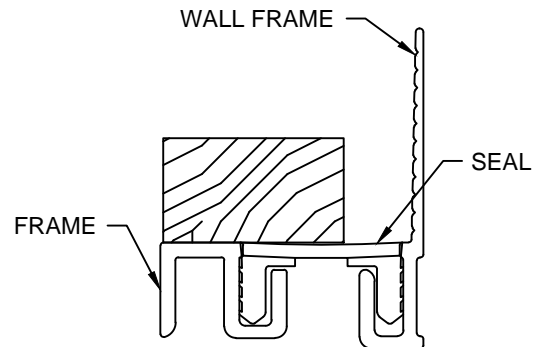
Read through all the steps of these instructions prior to beginning work.

# STEP 1

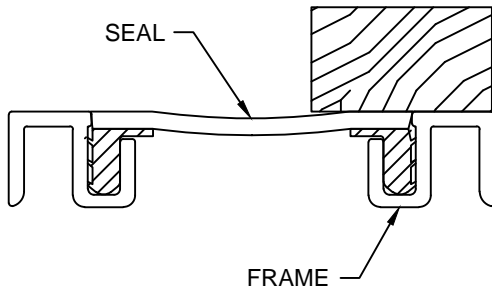
## SEAL INSTALLATION



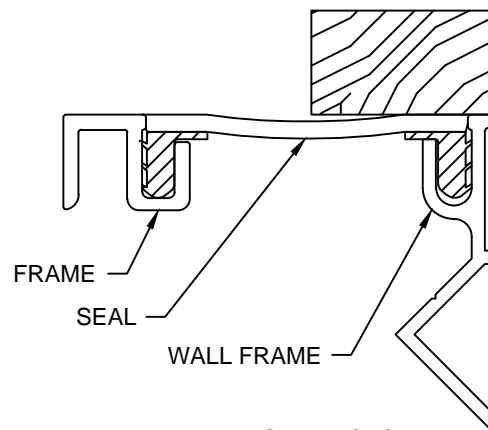
MODEL-FCF-100



MODEL-FCFC-100



MODEL-FCF-200



MODEL-FCFC-200

Note: Prior to installation, the Cover must be assembled.

- 1.1) Measure and cut two lengths of Frame to the required length (max. 20').
- 1.2) Insert Seal into Frames. If necessary, you may use a rubber mallet and a wood block to gently seat the seal flush with the surface of the retainer.

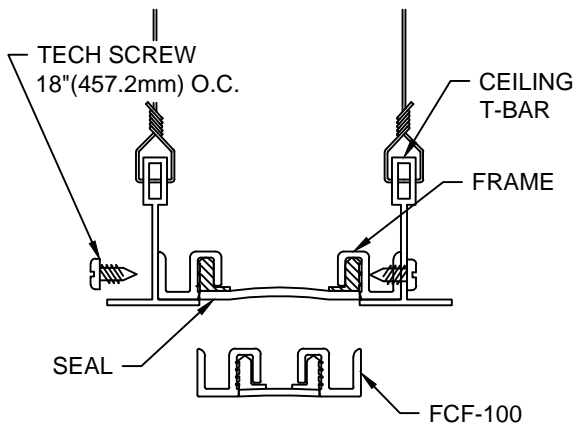
Tip: If you spray the push in arrows with soapy water, the Seals slide much easier.

Splicing ( If Required )

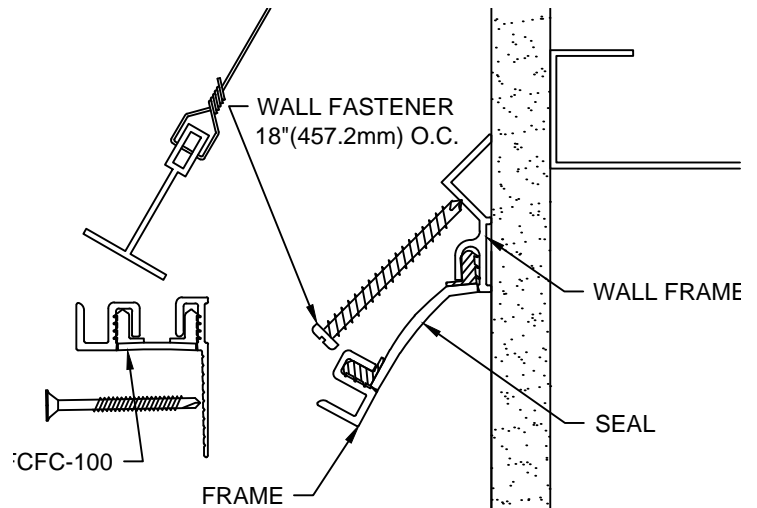
- 1.3) Wipe ends of seals to be bonded with alcohol (or similar) to remove all dirt, moisture, and oils that might affect the bond.
- 1.4) Apply "Super Glue" adhesive (Not Supplied) to the entire cut surface of the seal. **IMPORTANT: PLEASE OBSERVE THE SAFETY PRECAUTIONS ON THE ADHESIVE CONTAINER!**
- 1.5) Align and bring the ends of the seals together. Apply pressure against the ends of the seal until adhesive has set.

# STEP 2

## INSTALLATION



MODEL-FCF

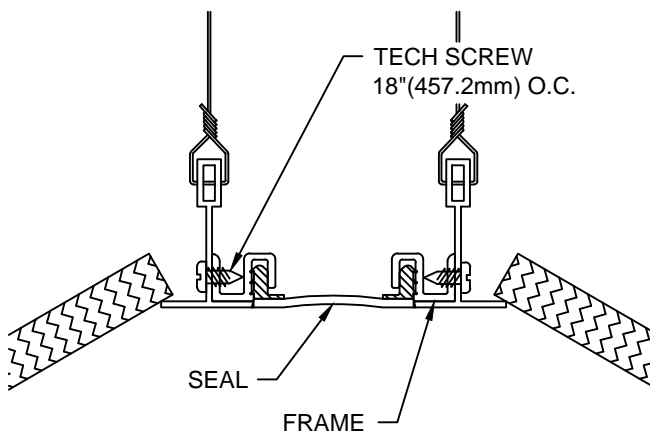


MODEL-FCFC

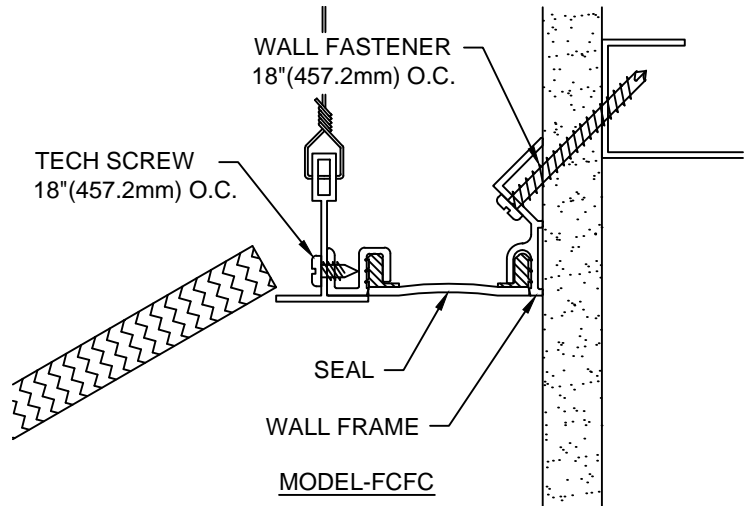
- 2.1) Prior to installing the ceiling tiles, place the Cover in between the Ceiling T-bars (see FCF detail above).
- 2.2) Fasten the Frames onto Ceiling T-bars using the C/S supplied screws.
- 2.3) Repeat this installation procedure for any additional lengths of Cover required.
- 2.4) Install ceiling tiles.

### Ceiling to Wall Application:

- 2.1w) Prior to installing the ceiling tiles, place the Cover in between the Ceiling T-bars and the wall.
- 2.2w) Move the ceiling track and the Seal out of the way. Fasten the Wall Frame into place using the C/S supplied wall fastener.  
Note: Depending on the wall construction, it may be necessary to pre-drill holes for the C/S supplied fasteners.
- 2.3w) Fasten the Frames onto ceiling track using the C/S supplied screws.
- 2.4w) Repeat this installation procedures for any additional lengths of Cover.
- 2.5w) Install ceiling tiles.



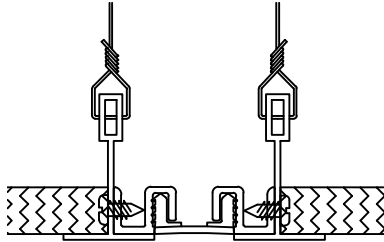
MODEL-FCF



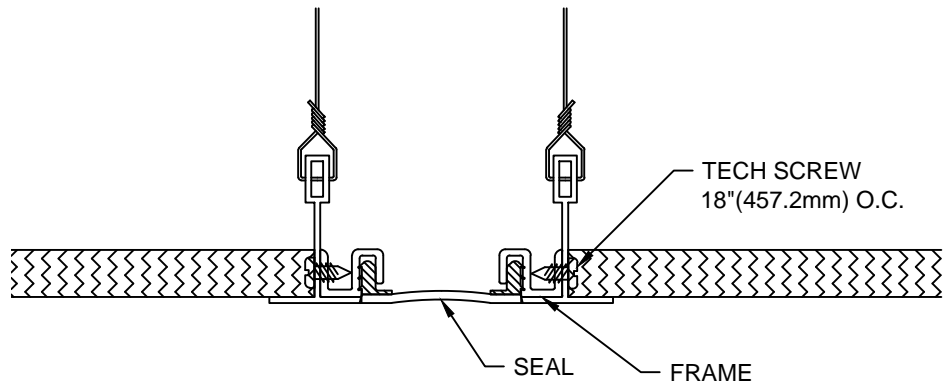
MODEL-FCFC

# STEP 3

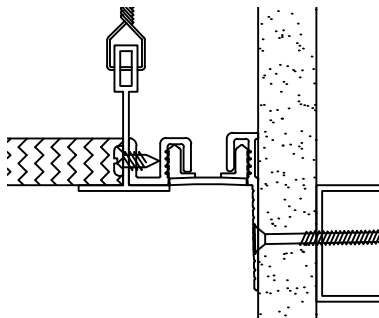
## COMPLETE INSTALLATION



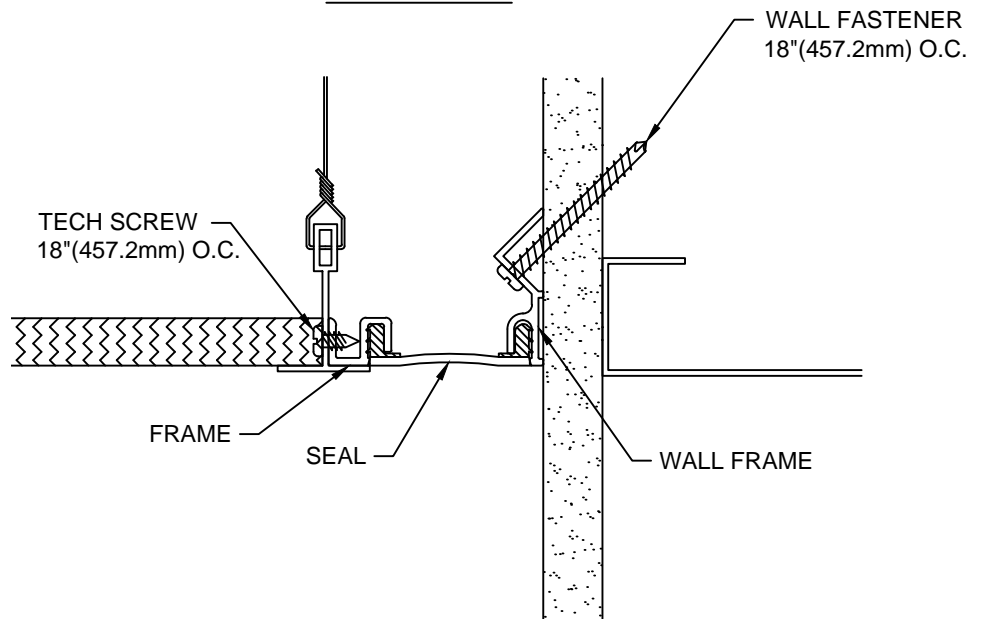
MODEL-FCF-100



MODEL-FCF-200



MODEL-FCFC-100



MODEL-FCFC-200

- 3.1) When installation of the C/S Expansion Joint Cover has been completed, remove all residue and foreign matter from the area and joint cover.
- 3.2) Clean the C/S Joint Cover and adjoining surfaces with proper cleaner.
- 3.3) Protect the Joint Cover until the Architect's final inspection.