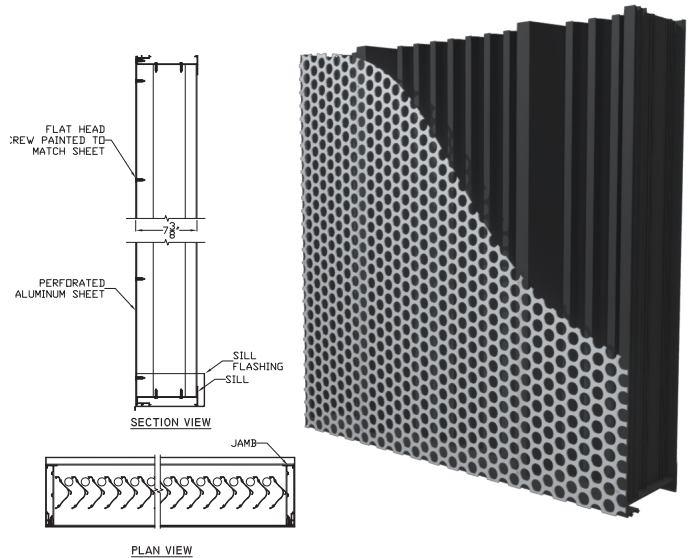


**Model PL-4605 - 1" (25.4mm) Hole Pattern
7.5" (190.5 mm) Perforated Vertical Storm Resistant Louver**

Material:

Material:	Louver 6063-T6 Alloy Perforated Sheet 3003 H14 aluminum
Nominal Thickness (heads, sills, jambs, & mullions):	0.10" (2.54 mm)
Nominal Blade Thickness:	0.060" (1.52 mm)
Additional Options (at additional cost):	Rear bird or Insect screen Continuous clip angles for attachment Sheet blank off, Insulated blank off Sill pans, Flange frames Integrated glazing frames



**Test Summary:
For a 4 Foot by 4 Foot Unit.**

Tested with mill finish and no rear bird or insect screen

- Free area = 8.52 ft² (0.79 m²)
- Percent free area = 53.2%
- Intake Pressure Drop at 1,000 FPM free area velocity = 0.27 in H₂O (67.3 Pa)
- To maintain a CLASS A (99%) effectiveness rating* with:
 - a 29.1 mph wind speed and rainfall rate of 3 in/hr
 - Max. intake core velocity 5.0 m/s (1016 FPM)
 - Max. intake free area velocity 8.92 m/s (1756 FPM)
 - a 50 mph wind speed and rainfall rate of 8 in/hr
 - Max. intake core velocity 5.0 m/s (998 FPM)
 - Max. intake free area velocity 8.76 m/s (1725 FPM)

Discharge Coefficient
Intake Cd = 0.35 (Class 2)

Wind Driven Rain Performance: Tested with 1m² core area, mill finish and no rear bird or insect screen*

The louver test was based on a 39.370" (1.0 m) x 39.370" (1.0 m) core area unit tested at a rainfall rate of 3" per hour (75 mm/hr) and with a wind directed to the face of the louver at a velocity of 29.1 mph (13 m/s) as well as a rainfall rate of 8" per hour (203 mm) and a wind velocity of 50 mph (23.3 m/s). The test data shall show the water penetration effectiveness rating at each corresponding ventilation rate.

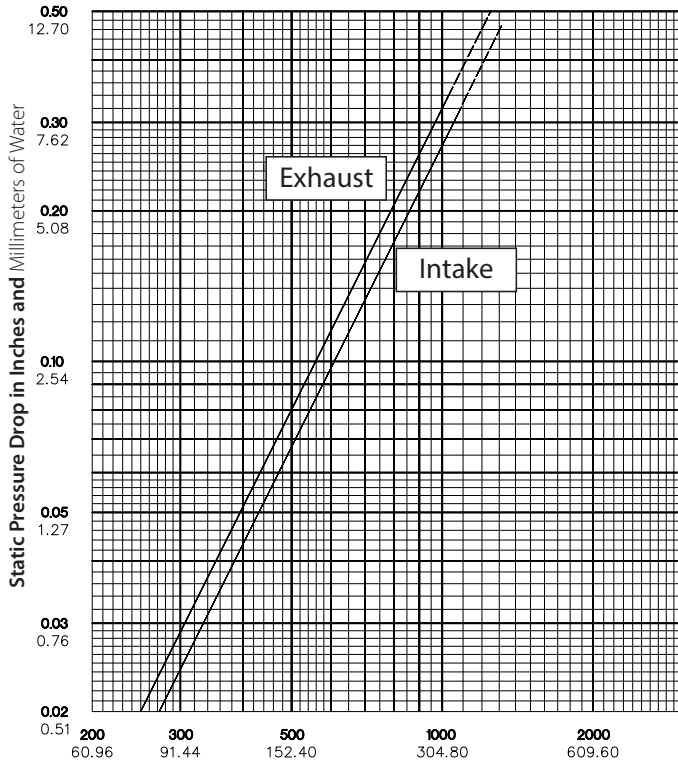
29.1 mph (13 m/s) & 3" (75 mm) rain per hour

Core Velocity Through Cal. Plate (m/s):	0.0	0.5	1.0	1.5	2.0	2.5	3.0	3.5	4.0	4.5	5.0
Core Velocity Through Louver (ft/min):	0	132	197	287	380	482	591	679	813	914	1016
Free Area Velocity (ft/min):	0	228	340	496	657	833	1021	1173	1405	1580	1756
Rating Effectiveness:	A	A	A	A	A	A	A	A	A	A	A
Effectiveness Ratio (%):									99.9	99.6	99.4

50 mph (22.3 m/s) & 8" (203 mm) rain per hour

Core Velocity Through Cal. Plate (m/s):	0.0	0.5	1.0	1.5	2.0	2.5	3.0	3.5	4.0	4.5	5.0
Core Velocity Through Louver (ft/min):	0	96	194	284	401	495	567	674	799	899	998
Free Area Velocity (ft/min):	0	166	335	491	693	855	980	1165	1380	1553	1725
Rating Effectiveness:	A	A	A	A	A	A	A	A	A	A	A
Effectiveness Ratio (%):									99.6	99.5	99.1
Effectiveness Rating:	A = 1 to 0.99			B = 0.989 to 0.95			C = 0.949 to 0.80			D = Below 0.80	

**Model PL-4605 - 1" (25.4mm) Hole Pattern
7.5" (190.5 mm) Perforated Vertical Storm Resistant Louver**



Air Velocity in Feet and Meters per Minute Through Free Area

Data corrected to standard air density.
48" x 48" (121.92cm x 121.92cm).

Free Area Table (Free area in **sq. feet** and sq. meters)

For additional sizes, please visit:

<https://www.c-sgroup.com/architectural-louvers/louvers-airflow-tool>

		Width in Inches and Meters							
		18	24	30	36	42	48	54	60
Height in Inches and Meters	18	0.46	0.61	0.76	0.91	1.07	1.22	1.37	1.52
	0.46	0.09	1.42	1.85	2.27	2.70	3.13	3.55	3.98
	24	0.61	0.12	0.18	0.23	0.28	0.34	0.39	0.44
	0.61	0.16	0.22	0.29	0.36	0.42	0.49	0.56	0.62
	30	0.76	0.16	0.22	0.29	0.36	0.42	0.49	0.56
	0.76	0.19	0.27	0.35	0.43	0.51	0.59	0.67	0.75
	36	0.91	0.19	0.27	0.35	0.43	0.51	0.59	0.67
	0.91	0.22	0.31	0.41	0.50	0.60	0.69	0.79	0.88
	42	1.07	0.22	0.31	0.41	0.50	0.60	0.69	0.79
	1.07	0.25	0.36	0.47	0.58	0.68	0.79	0.90	1.01
	48	1.22	0.25	0.36	0.47	0.58	0.68	0.79	0.90
	1.22	0.28	0.41	0.53	0.65	0.77	0.89	1.01	1.13
	54	1.37	0.28	0.41	0.53	0.65	0.77	0.89	1.01
	1.37	0.32	0.45	0.59	0.72	0.86	0.99	1.13	1.26
	60	1.52	0.32	0.45	0.59	0.72	0.86	0.99	1.13
	1.52	0.35	0.50	0.65	0.79	0.94	1.09	1.24	1.39
	66	1.68	0.35	0.50	0.65	0.79	0.94	1.09	1.24
	1.68	0.38	0.54	0.70	0.87	1.03	1.19	1.35	1.52
	72	1.83	0.38	0.54	0.70	0.87	1.03	1.19	1.35
	1.83	0.41	0.59	0.76	0.94	1.12	1.29	1.47	1.64
78	1.98	0.41	0.59	0.76	0.94	1.12	1.29	1.47	
1.98	0.44	0.63	0.82	1.01	1.20	1.39	1.58	1.77	
84	2.13	0.44	0.63	0.82	1.01	1.20	1.39	1.58	
2.13	0.47	0.68	0.88	1.09	1.29	1.49	1.70	1.90	
90	2.29	0.47	0.68	0.88	1.09	1.29	1.49	1.70	
2.29	0.51	0.72	0.94	1.16	1.38	1.59	1.81	2.03	
96	2.44	0.51	0.72	0.94	1.16	1.38	1.59	1.81	
2.44	0.54	0.77	1.00	1.23	1.46	1.69	1.92	2.15	
102	2.59	0.54	0.77	1.00	1.23	1.46	1.69	1.92	
2.59	0.57	0.81	1.06	1.30	1.55	1.79	2.04	2.28	
108	2.74	0.57	0.81	1.06	1.30	1.55	1.79	2.04	
2.74	0.60	0.86	1.12	1.38	1.63	1.89	2.15	2.41	
114	2.90	0.60	0.86	1.12	1.38	1.63	1.89	2.15	
2.90	0.63	0.91	1.18	1.45	1.72	1.99	2.26	2.54	
120	3.05	0.63	0.91	1.18	1.45	1.72	1.99	2.26	
3.05									

Upper Numerals English Units/Lower Numerals Metric Units