

**Construction Specialties, Inc.**

**Design No. CSI/EJCA 120-05**

**Wall Joint System**

**FB-24 Fire Barrier**

**UL 2079**

Rating: 2 Hour

L-Rating: < 3 SCFM/LF

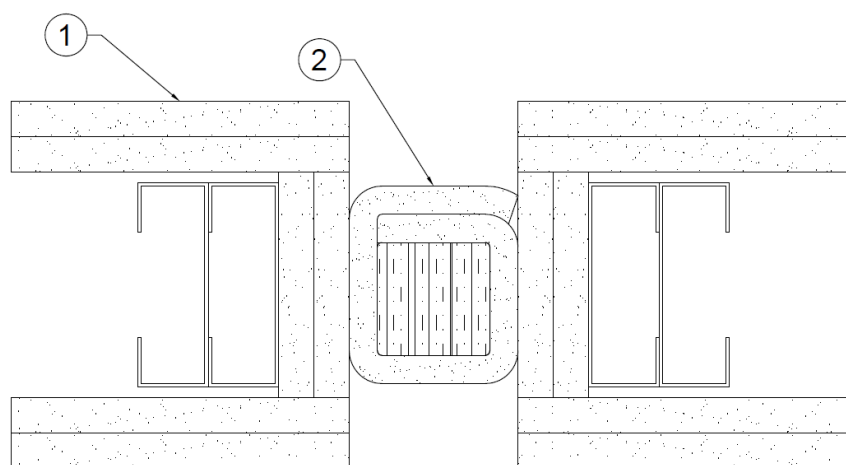
**CAN/ULC-S115**

F-Rating: 2 Hour

FT Rating: 2 Hour

**ASTM E1399/E1399M**

Cycling – Class IV  $\pm$  50% Horizontal Movement (See Table 1)



Nominal Joint Size	Max. Joint Width	Min. Joint Width.
1 in.	1-1/2 in.	1/2 in.
2 in.	3 in.	1 in.
3 in.	4-1/2 in.	1-1/2 in.
4 in.	6 in.	2 in.

**Table 1. Joint Widths.**

1. **SUPPORTING CONSTRUCTION:** A 2-hour fire resistance rated wall assembly meeting the min. construction requirements of one of the following options:

- A. **STEEL STUD WALL ASSEMBLY:** Install in accordance with the corresponding listed design. Use min. 25 GA steel studs spaced

max. 24 in. on center (oc) with 3-5/8 in. web and 1-1/4 in. flange. Apply two layers of 5/8 in. thick, Type X gypsum wallboard on each side of the wall assembly. Install double studs on both sides of the joint, and cover joint face with two layers of 5/8 in. thick, Type X gypsum wallboard.



B. **WOOD STUD WALL ASSEMBLY:** Install in accordance with the corresponding listed design. Use nominal 2 in. x 4 in. wood studs spaced max. 24 in. on center (oc) Apply two layers of 5/8 in. thick, Type X gypsum wallboard on each side of the wall assembly. Install double studs on both sides of the joint, and cover joint face with two layers of 5/8 in. thick, Type X gypsum wallboard.

C. **CONCRETE OR MASONRY WALL ASSEMBLY:** Install in accordance with corresponding listed design. Use a min. 2-hour fire resistance rated concrete or masonry wall assembly with a min. thickness of 6 in.

**2. CERTIFIED MANUFACTURER:** Construction Specialties, Inc.

**CERTIFIED PRODUCT:** FB-24 Fire Barrier

**CERTIFIED MODELS:** FB-241, FB-242, FB-243, and FB-244

**JOINT TREATMENT:** Fire barrier composed of insulation block wrapped in ceramic blanket. Install joint treatment in accordance with manufacturer's installation instructions.

A. The assembled fire barrier is inserted into the joint opening and Tremco Trempro 644 high temperature silicone is applied by inserting the tube nozzle approximately 1-1/2 in. down between the barrier and the substrate and applying a 3/8 in. equivalent

bead of sealant along the length of each side of the joint, per the manufacturer's installation instructions.

B. Splices in joint treatment should be implemented by butting factory supplied 45° ends together. Tremco Trempro 644 high temperature silicone is applied to one end (with 3/8 in. bead on perimeter and "X" pattern across face) prior to butting and tape applied after butting per manufacturer's installation instructions.

**3. JOINT COVER (Not Shown):** Min. 20 GA joint cover installed on both sides of joint formed of aluminum, bronze, stainless steel, or galvanized steel. Joint cover shall have a min. 2-1/4 in. overlap onto the supporting wall construction (Item 1) on each side. Joint covers anchored to wall in accordance with manufacturer's installation instructions, using min. #8 screws in stud wall assemblies and min. 3/16 in. diameter anchors in concrete or masonry wall assemblies, spaced min. 18 in. oc and fastened on both sides of the joint.

**CHASE WALL CONDITION (Not Shown):** In conditions where the linear opening is enclosed within a 2-hour fire resistance rated chase wall, the cover plate is only required on the side of the joint not enclosed within the chase wall. A joint cover consisting of a creased 2 mil stainless steel foil secured with 1 in. wide continuous galvanized steel washer strips along each side of the joint may be installed in lieu of the min. 20 GA joint cover.

*Consult the listing report on the Directory of Building Products (<https://bpdirectory.intertek.com>) for the edition of the standard(s) evaluated.*



*Compliance of the assembly described in this Design Listing with the referenced standard relies on verification that the assembly constructed in the field is consistent with that described herein. Intertek certified products may be verified by the approved Intertek label; other products must be verified by the Authority Having Jurisdiction as meeting the specifications stated herein.*