

GridLine® 2 G62



GridLine is a high-end, heavy-duty grid system that protects interior flooring and carpets by trapping incoming dirt and debris from pedestrian shoes. A sustainable option, designers and owners will love the high-tech appearance of the satin finish, and building owners will love the durability of stainless steel combined with easy maintenance. For a different aesthetic, choose G62 which features wider wire widths and spacing compared to our G6 model.

Advantages

- Exceptional traction and scraping action
- High-end, high-tech appearance
- Extremely durable
- Easy maintenance
- Sustainable
- Coordinates with surrounding stainless-steel accents

Building Segments

- Education
- Civic & Culture
- Corporate & Commercial
- Healthcare
- Retail & Hospitality
- Mixed Use
- Sports & Convention Centers
- Transportation

Applications

- Interior and exterior entries
- Vestibules



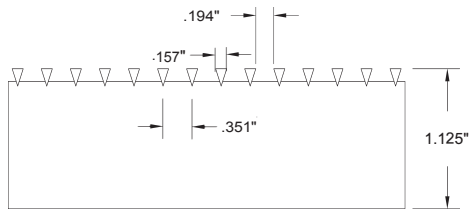
[View 3D Model](#) →

GridLine® 2 G62

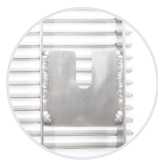
Product Details

- Product depths:
 - 5/8" (15.9mm)
 - 1 1/8" (28.6mm)
- Wire:
 - Width: .157" (4mm)
 - Spacing: .194" (4.9mm)
 - On-center Spacing: .351" (8.9mm)
- Alloy options:
 - Type 304
 - Type 316

Connection Details



Lockdown Options



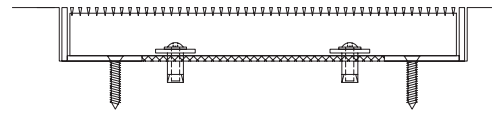
Welded tab

Warranty

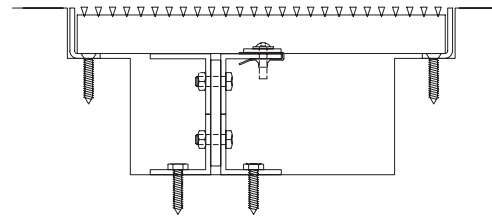
- Five-Year Product Warranty

Frame Options

- No Frame



Level base frame w/optional drain pan



Deep pit frame w/optional drain pan

Standard Finish



Satin #4

Optional Finishes

- Bead/sand blasted
- SlipNOT coated

See all frame and finish options online at c-sgroup.com.

Certifications/Testing

- Rolling Load Capacity: Standard 1,000 lb./wheel, Deep Pit Frame Applications is 300 lb./wheel
- ASTM D-2047-96 SCOF: 0.70 Wet
- LEED EQ credit 5
- Low VOC Emissions Certificate – Intertek Clean Air Gold (CDPH 01350 v1.2)



Learn More →