

# MODEL 2FB17UM-L LATERAL SLIDE FIRE BARRIER INSTALLATION INSTRUCTIONS (9" to 30" Max. Open)



## IMPORTANT INFORMATION

Prior to the commencement of Installation all materials **MUST** be inspected for Damage. Any damage must be reported to Construction Specialties as soon as possible, so that replacement materials may be furnished without delay.

All work must be completed as per Architect's Approved "Shop Drawings", and in accordance with these Installation Instructions. When installation is complete, all materials must be protected from damage until the Architect's FINAL INSPECTION.

All materials should be arranged in the order that they are to be installed. All hardware required for each portion of the work should be placed with the appropriate materials.

Please review all Approved Shop Drawings and this Document to familiarize yourself with all the details and components of this assembly.

### IMPORTANT:

**READ THROUGH ALL INSTRUCTIONS PRIOR TO STARTING INSTALLATION**

10/7/2022



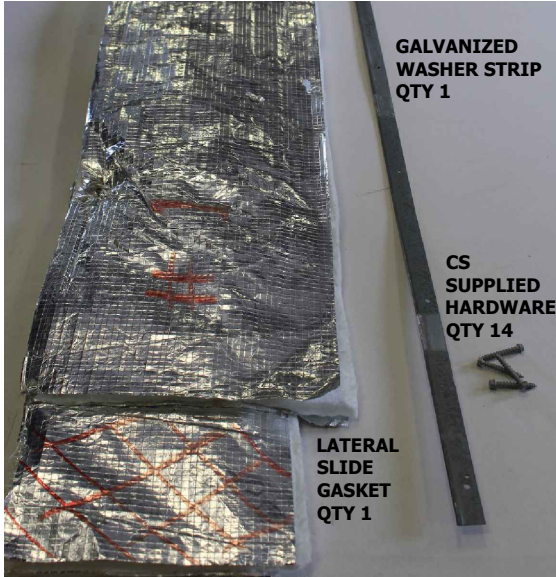
**Construction Specialties™**

6696 Route 405 Highway, Muncy PA 17756  
(800) 233-8493 • Fax (570) 546-5169 • www.c-sgroup.com

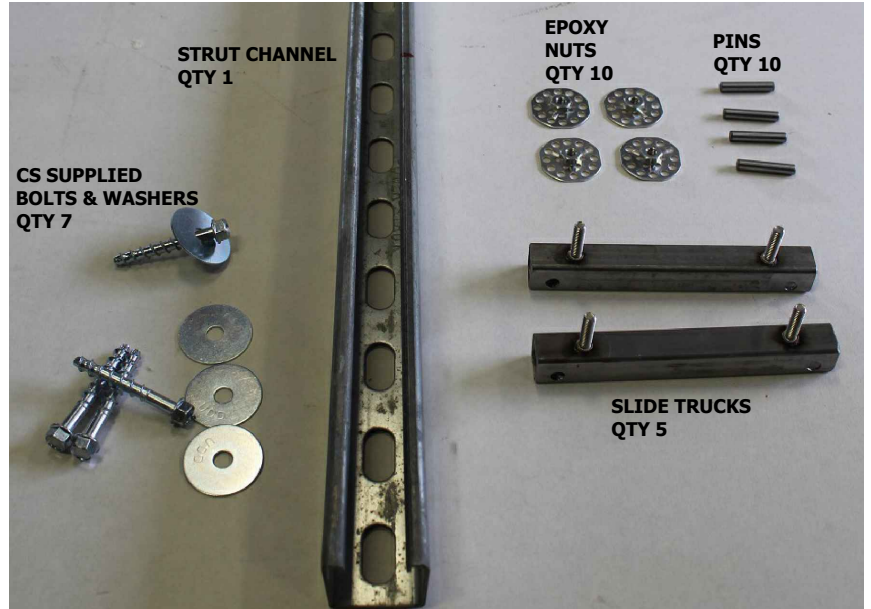
This document is the property of Construction Specialties, Inc. and contains CONFIDENTIAL PROPRIETARY INFORMATION that is not to be disclosed to third parties and is not to be used without approval in writing from Construction Specialties, Inc.

# PARTS LISTING PER 10' UNIT

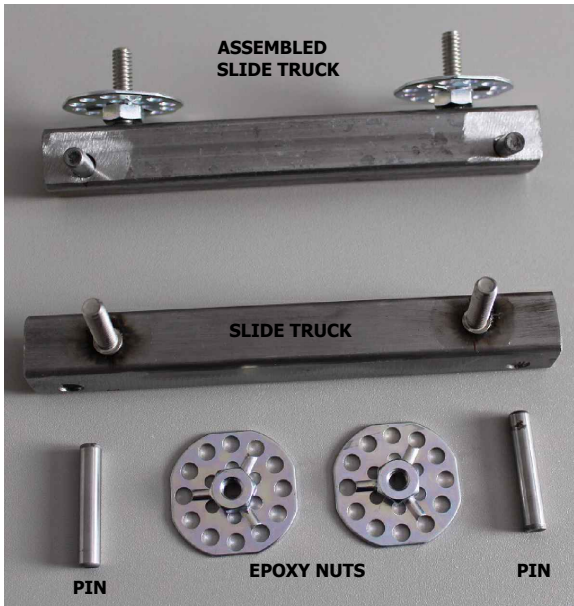
## LATERAL SLIDE GASKET ①



## LATERAL SLIDE ASSEMBLY STRUT CHANNEL & SLIDE TRUCKS ②



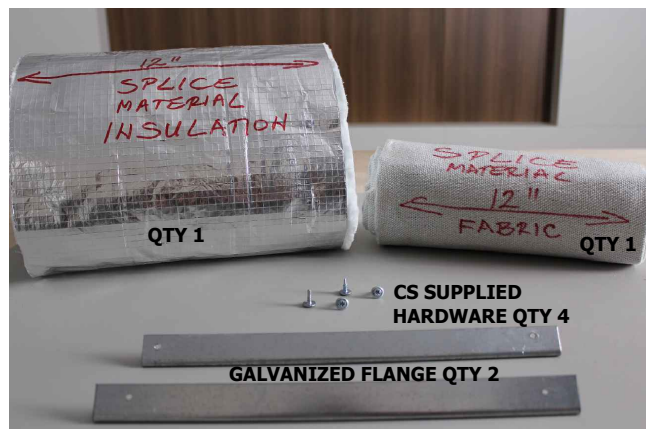
## SLIDE TRUCK ASSEMBLY



## LATERAL SLIDE FIRE BARRIER ③



## SPLICING KIT ④



**\*\*Note:**  
 CS supplied hardware may vary from what is shown in photos.

General Instructions:

**ALWAYS WEAR GLOVES** when handling and cutting the barrier.

Before beginning installation, review the architectural drawings and approved Construction Specialties Inc. shop drawings to familiarize yourself with the joint cover models and locations.

Check all of the joint cover components to confirm that the correct joint cover model and size have been received. Also, check for materials that may have been damaged during shipping. Report all incorrect and/or damaged components to CS at 800-233-8493.

Read through all the steps of these instructions prior to beginning work.

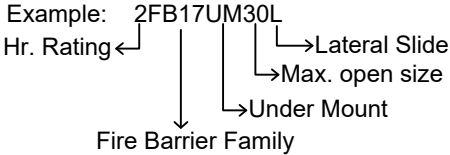
**TOOLS:**

The following tools may be needed for installation of the 2FB17UM-L fire barrier:

- Fabric or Leather Work Gloves
- Measuring Tape
- Hammer Drill
- Permanent Marker
- Tin Snips or Grinder
- Hammer
- Utility Knife
- Drill
- Quick Grip Clamps

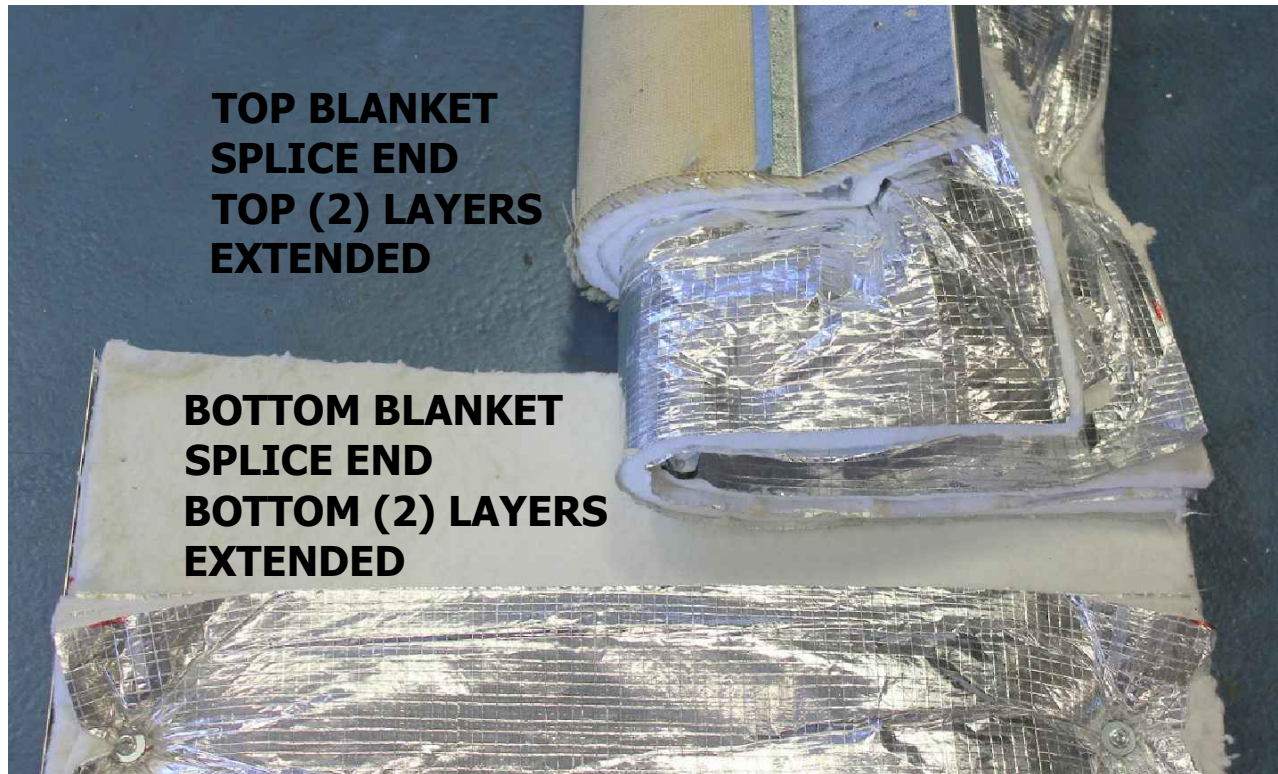
Model designating - 2FB17UM-L supplied is based on the max. open width.

2FB17UM-L Nomenclature



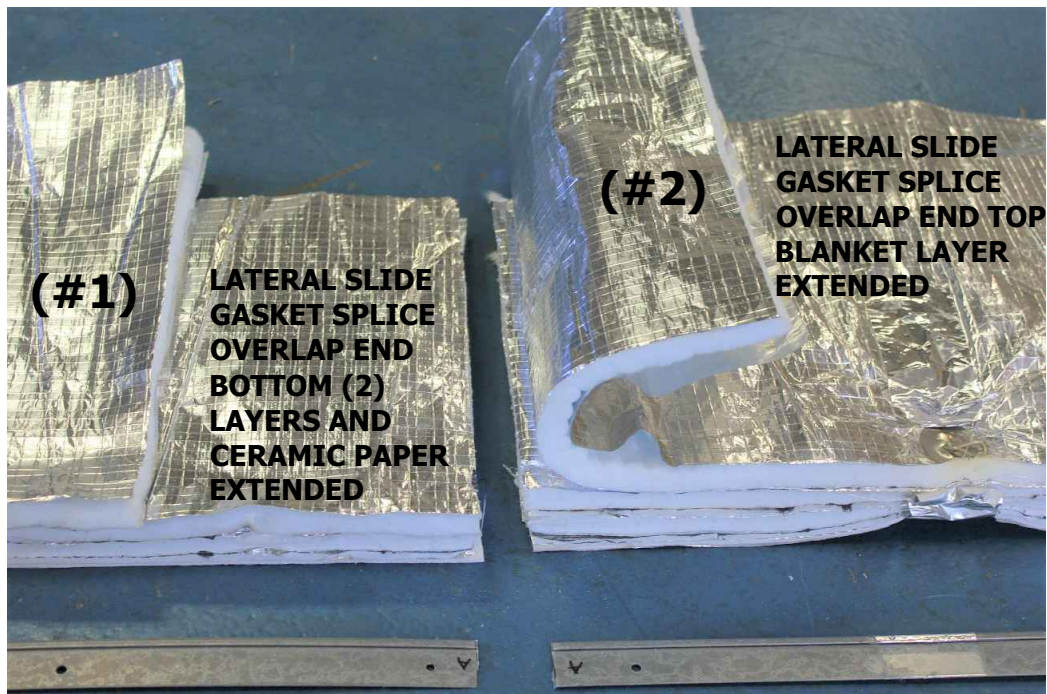
To view / download Installation Instructions for 2FB17UM-L visit [www.c-sgroup.com/expansion-joint-covers/accessories/2FB17UM-L](http://www.c-sgroup.com/expansion-joint-covers/accessories/2FB17UM-L)

# INSTALLATION NOTES



1.) The 2FB17UM-L floor Fire Barrier is supplied in 10' lengths and will have a Top and a Bottom blanket with extended splice ends for field splicing. See field splicing instructions later in these instructions explaining the splicing method.

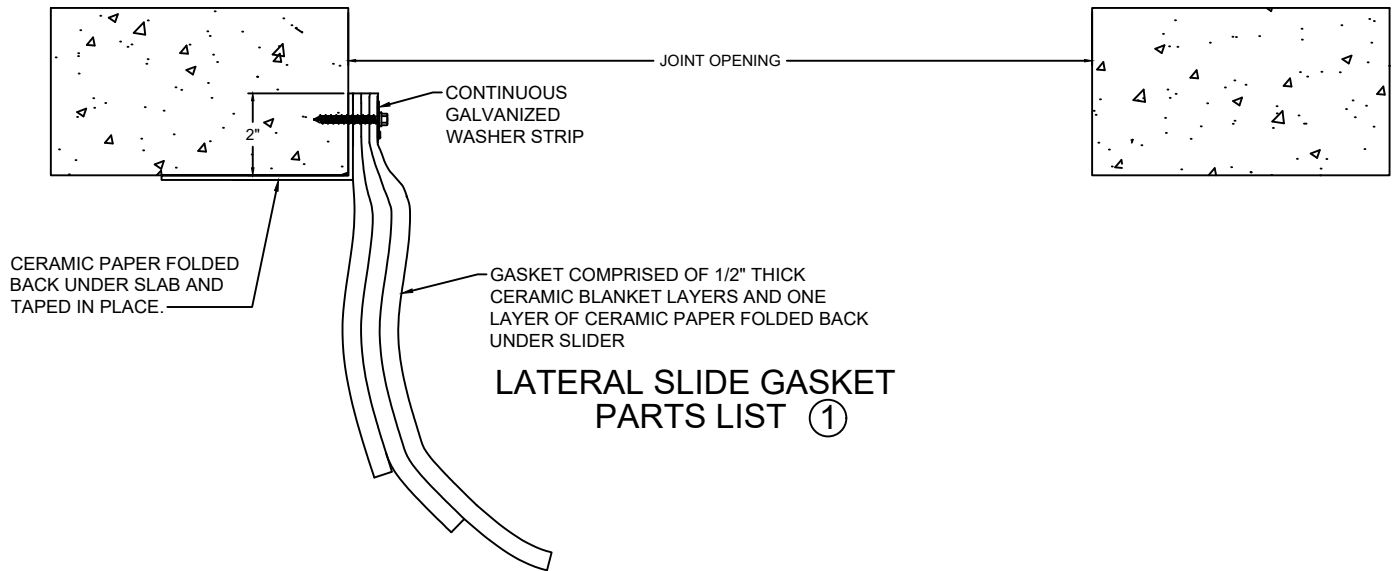
# INSTALLATION NOTES CON'T



- 2.) The 2FB17UM-L floor fire barrier has attached Galvanized Retainers.
- 3.) The Lateral Slide Gasket is comprised of three (3) 2-sided,  $\frac{1}{2}$ " thick ceramic blanket layers, one (1)  $\frac{1}{8}$ " layer of ceramic paper, and a continuous galvanized washer strip. The Lateral Slide Gasket will have Top and Bottom splicing ends for field splicing.
- 4.) Check the joint opening.
- 5.) To aid in installation, clips are included to temporarily hold in place the 2FB17UM-L Fire Barrier section until fasteners are installed.
- 6.) Field cutting barriers to specific lengths may be required.
- 7.) It is recommended to work with a minimum of two (2) people to lift, position, and install the 2FB17UM-L 10' lengths.

# STEP 1

## INSTALLATION OF FIRE BARRIER LATERAL SLIDE



1.1) From the underside of substrate measure and mark 2" up from the bottom of the joint opening, on one side only. Snap a chalk line for reference and placement of Lateral Slide Gasket. (Fig. 1A & 1B)

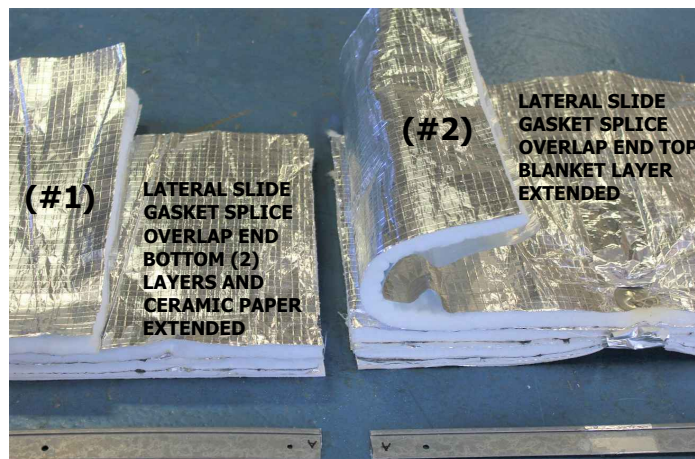


(Fig. 1A)



(Fig. 1B)

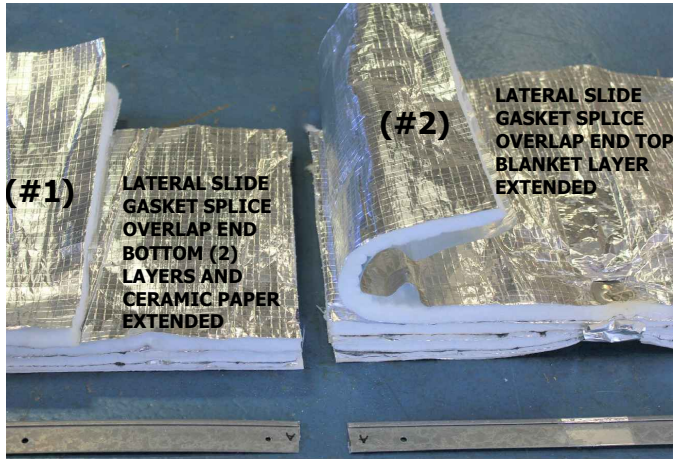
Note: Make sure the (#1) first piece of Lateral Slide Gasket is placed in the proper orientation. Align the straight end of the Lateral Slide Gasket with the joint end and the splicing end (the ceramic paper and 2 blanket layers) extend past the top blanket layer is installed to receive the next stepped end of the (#2) piece of Lateral Slide Gasket. See Fig. below)



# STEP 1 CON'T

## INSTALLATION OF FIRE BARRIER LATERAL SLIDE

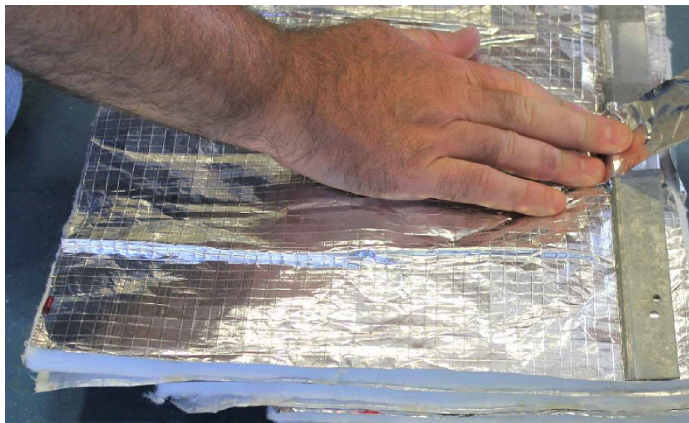
- 1.2) On the pinned Lateral Slide Gasket mark a reference line for the galvanized flange approximately 1/2" down from the top of gasket. Place the galvanized flange along the 1/2" reference line, with the folded edge down. Tape galvanized flange, using the supplied foil tape, to the Lateral Slide Gasket to hold in place. (Fig. 1C-1E) \*\*Note: Galvanized Flange is taped on top of widest layer of blanket - Fig 1D. (See page 7 for additional clarification on orientation)



(Fig. 1C)



(Fig. 1E)



(Fig. 1D)

# STEP 1 CON'T.

## INSTALLATION OF FIRE BARRIER LATERAL SLIDE

- 1.3) To aid in installation measure and mark a 2" reference line, down from the top, on the backside of the Lateral Slide Gasket. (Side with the shortest layer of blanket) (Fig.1F)
- 1.4) Beginning at one end of the joint with the first section of Lateral Slide gasket, in its proper orientation for splicing, align with the joint edge. Position the taped Lateral Slide Gasket on the 2" chalk line along the face of the substrate and check the 2" reference lines on the backside of the Lateral Slide Gasket are aligning with the bottom of the joint edge.(Fig.1G-1H)
- 1.5) Temporarily hold the Lateral Slide Gasket in place with several clamps. Install the supplied fasteners in the predrilled galvanized flange. \*Note In tightening the fasteners down the clamps loosen and could fall into the joint space. (Fig.1K)



(Fig. 1F)



(Fig. 1H)



(Fig. 1G)



(Fig. 1J)



(Fig. 1K)

# STEP 1 CON'T.

## INSTALLATION OF FIRE BARRIER LATERAL SLIDE

- 1.6) To prepare and install additional lengths of Lateral Slide Gasket repeat Step 1 instructions of 1.2 -1.3. Install the next length of Lateral Slide Gasket (#2) with the stepped end of the gasket to mate with the installed (#1) section of Lateral Slide Gasket. Butt the two sections tightly together. Follow Step 1 instruction of 1.5 on fasteners installation. (Fig. 1L-1M)
- 1.7) Fold back the ceramic paper layer of the Lateral Slide Gasket and tape to the underside of the joint. (Fig. 1N)



(Fig. 1L)



(Fig. 1M)

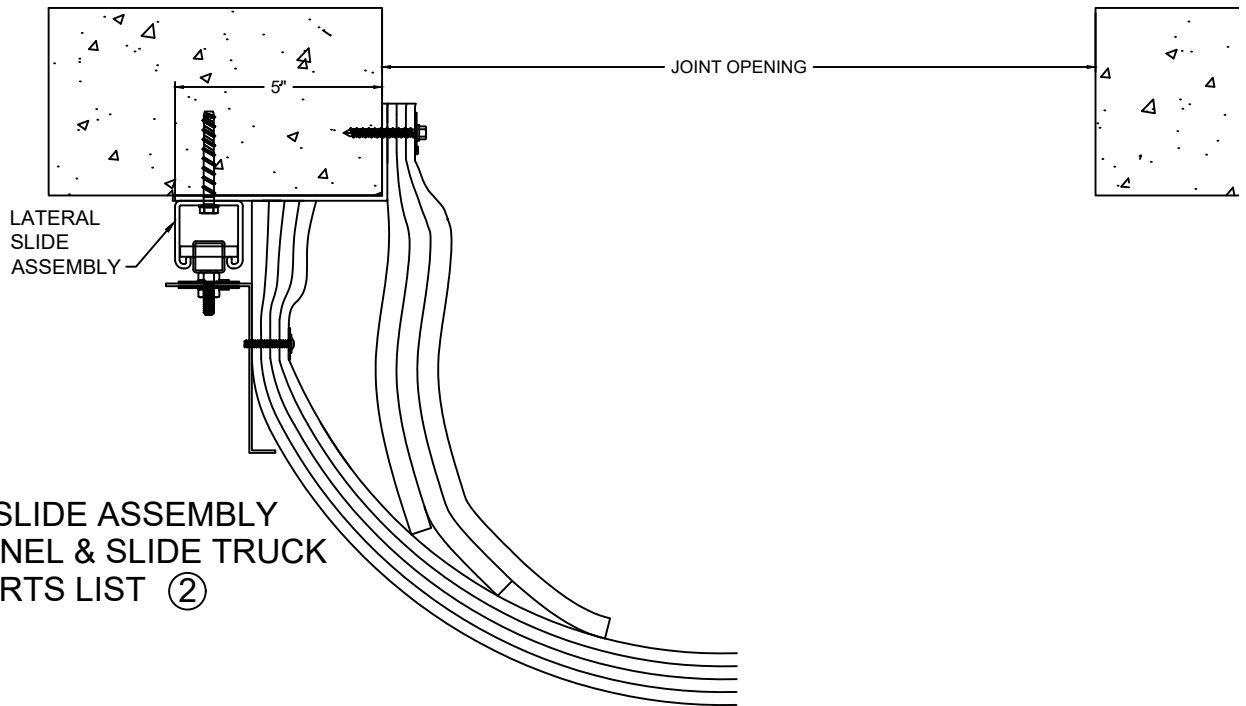


(Fig. 1N)



# STEP 2

## INSTALLATION OF STRUT CHANNEL



### LATERAL SLIDE ASSEMBLY STRUT CHANNEL & SLIDE TRUCK PARTS LIST ②

2.1) Measure back 5" on gasket and mark location of the Strut Channel. (Fig. 2A)

2.2) Measure the pre-drilled hole locations of the Lateral Slide Galvanized Flange. Measure and mark the locations on the Strut Channel for the assembled lateral slide truck locations. (Fig. 2B-2C)



(Fig. 2A)



(Fig. 2B)



(Fig. 2C)

# STEP 2 CON'T.

## INSTALLATION OF STRUT CHANNEL

- 2.3) Install the Strut Channel along the 5" mark on the gasket installing the supplied washer and bolts 18" O.C. at the through hole slots of the channel. To install additional piece(s) of Strut Channel align the two (2) sections together and clamp. \*Note it is important that they align for the lateral slide truck to move within the Strut Channel. Fasten in place. (Fig.2D-2F)



(Fig. 2D)



(Fig. 2E)



(Fig. 2F)

# STEP 3

## INSTALLATION OF SLIDE TRUCKS

- 3.1) Assemble the Slide Trucks installing epoxy nut on each threaded Truck post and insert a metal dowel pin through the two drilled Truck holes. (Fig. 3A)



(Fig. 3A)

# STEP 3 CON'T.

## INSTALLATION OF SLIDE TRUCKS

- 3.2) Install assembled Slide trucks with the epoxy nuts down into the strut channel. The Slide Truck metal dowel pins will sit within the channel on the channel legs. Slide Trucks to the marked locations on the channel taken from lateral slide galvanized flange. (Fig. 3B-3D)



(Fig. 3B)



(Fig. 3C)



(Fig. 3D)

# STEP 4

## INSTALLATION OF LATERAL SLIDE GALVANIZED FLANGE

4.1) Starting at end of joint install Lateral Slide 2FB17UM-L length matching the holes in the galvanized flange with the threaded truck post studs. Install supplied epoxy nuts on truck post holding Lateral Slide 2FB17UM-L length in place. (Fig. 4A-4C)



(Fig. 4A)



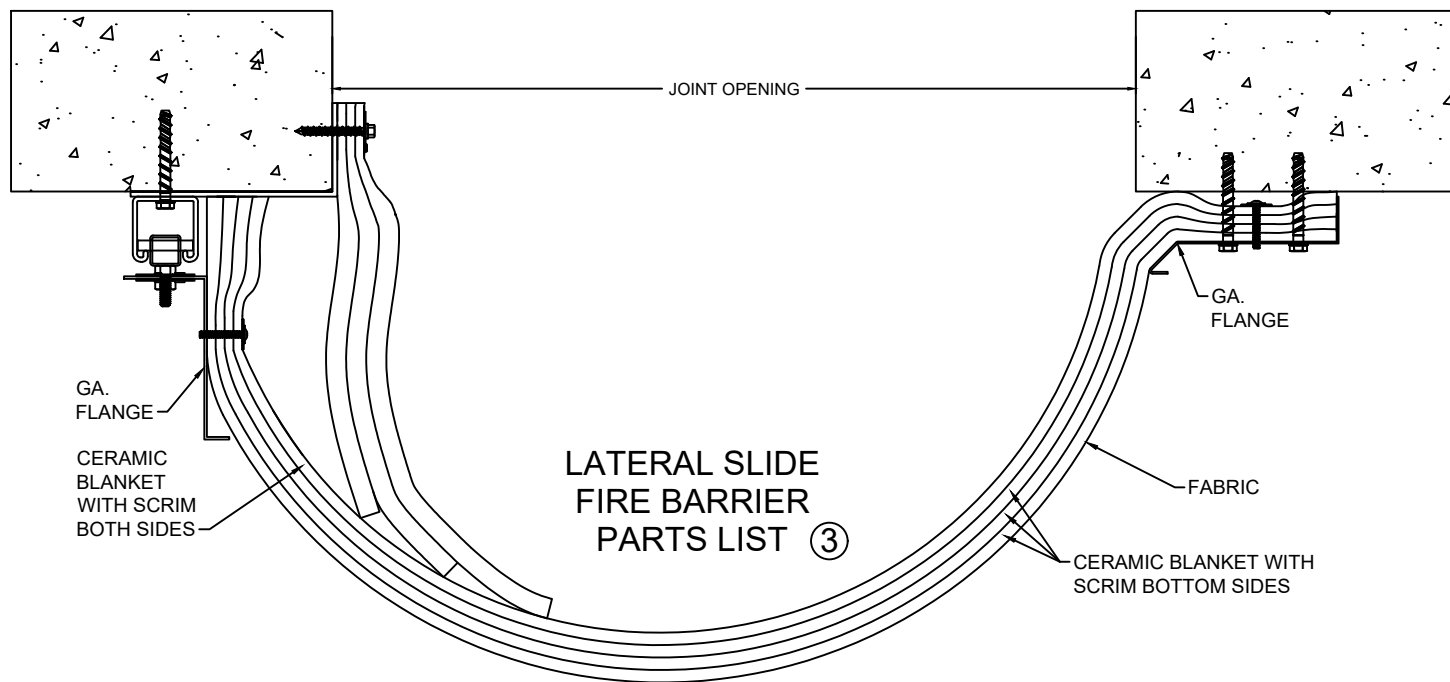
(Fig. 4B)



(Fig. 4C)

# STEP 5

## INSTALLATION OF LATERAL SLIDE FIRE BARRIER



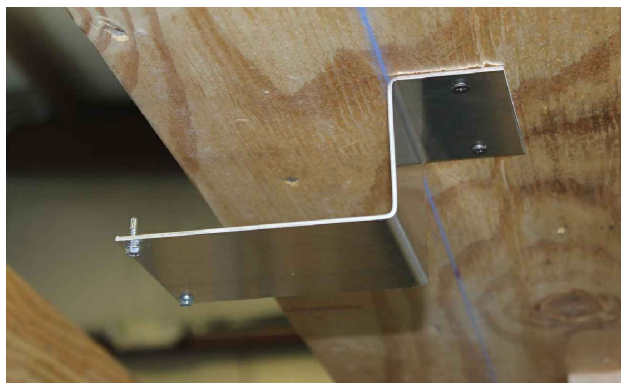
# STEP 5

## INSTALLATION OF LATERAL SLIDE FIRE BARRIER

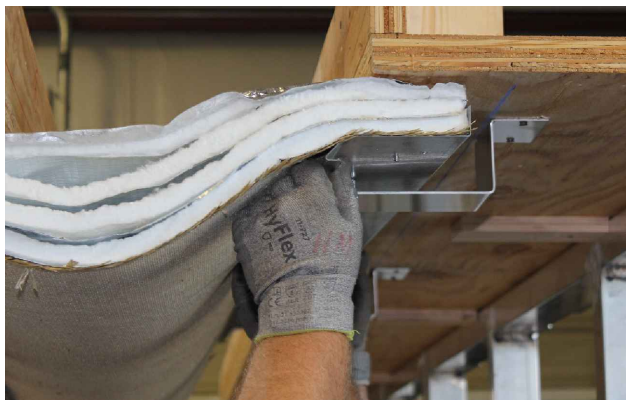
- 5.1) On the opposite side of the joint measure and mark 5" over from the joint opening on the ceiling. Snap a chalk line for reference and placement of 2FB17UM-L flange edge.(Fig. 5A)
- 5.2) Install provided installation clips, 2 per 10' length, this will aid in the installation of the 2FB17UM-L along the chalk line. See photos for orientation of clips to joint opening. (Fig. 5B)
- 5.3) Aligned with the joint end slip the 2FB17UM-L flange into the installed clips.Slightly bend the clip downward to slip over the fire barrier flange lip edge. (Fig. 5C-5D)



(Fig. 5A)



(Fig. 5B)



(Fig. 5C)



(Fig. 5D)

# STEP 5 CON'T.

## INSTALLATION OF LATERAL SLIDE FIRE BARRIER

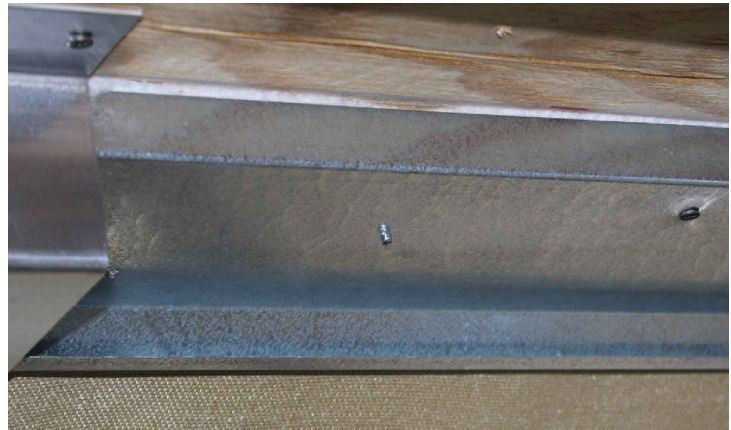
- 5.4) With the clips holding the 2FB17UM-L in place install the CS supplied fasteners, per the manufacturer's guidelines, The fasteners are installed 18" O.C. and staggered in the predrilled galvanized flange. (Fig. 5E-5F)
- 5.5) Draw-up the galvanized flange to sit tight against the bottom of the floor substrate. (Fig. 5G)
- 5.6) Remove the clips and re-install along the chalk line to aid in any additional 2FB17UM-L material lengths. (Fig. 5H)



(Fig. 5E)



(Fig. 5F)



(Fig. 5G)



(Fig. 5H)

# STEP 6

## SPLICING 2FB17UM-L LENGTHS TOGETHER

The following instructions are to be used to splice together two lengths of Lateral Slide 2FB17UM-L fire barrier sections. Proper orientation to the previously installed 2FB17UM-L length is required.

- 6.1) When additional Lateral Slide 2FB17UM-L lengths are needed orient the Bottom Blanket Splice End, with the bottom 2 layer extended, to the previously installed Top Blanket Splice End, with the top 2 layers extended. (Fig. 6A-6B)
- 6.2) With the next length of Lateral Slide 2FB17UM-L in its proper orientation butt the Bottom Blanket Splice end to the installed Top Blanket Splice End and install following installation Steps of 2.1-5.6. (Fig. 6C-6E)



(Fig. 6A)



(Fig. 6B)



(Fig. 6C)



(Fig. 6D)



(Fig. 6E)

# STEP 7

## SPLICE KIT INSTALLATION

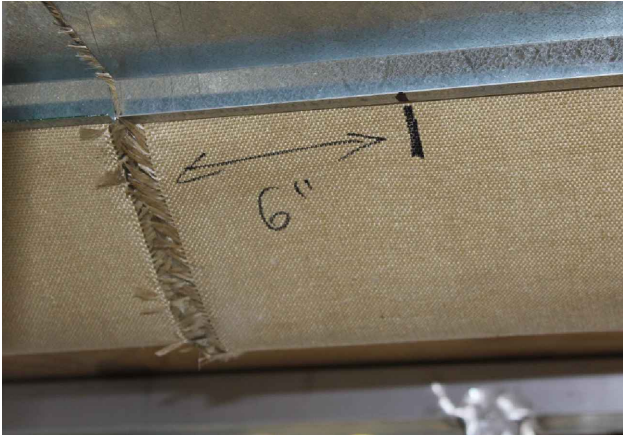
Note: Splicing Kit ④ on Parts Listing page.

At the butted segments of Fire Barrier a Splicing Kit containing, galvanized flanges, 12" wide roll of insulation and fabric is used to insulate the butt joints.

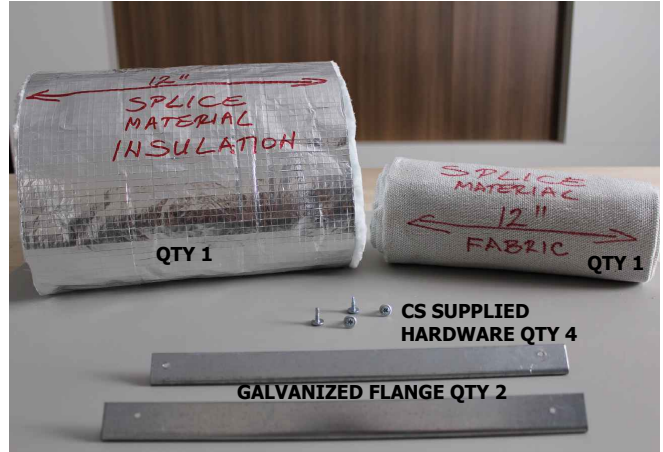
7.1) Measure and mark 6", each side the installed 2FB17UM-L at the splice section.(Fig 7A)

7.2) Locate the 12" wide Insulation roll and Fabric, using the Splice Strip Chart cut the material to length at your 2FB17UM -L max open dimension. (Fig. 7B-7E)

7.3) Match the two pieces of the Splice strip material and tape together using several pieces foil tape along the length. (Fig. 7F)



(Fig. 7A)



(Fig. 7B)

SPLICE STRIP CHART - WALL FIRE BARRIERS	
FIRE BARRIER MODEL SIZE (MAX OPEN)	SPLICE STRIP & FABRIC LENGTH
2FB17UM-9L	22"
2FB17UM-12L	25"
2FB17UM-15L	28"
2FB17UM-18L	31"
2FB17UM-21L	34"
2FB17UM-24L	37"
2FB17UM-27L	40"
2FB17UM-30L	43"

(Fig. 7C)



(Fig. 7D)



(Fig. 7E)



(Fig. 7F)



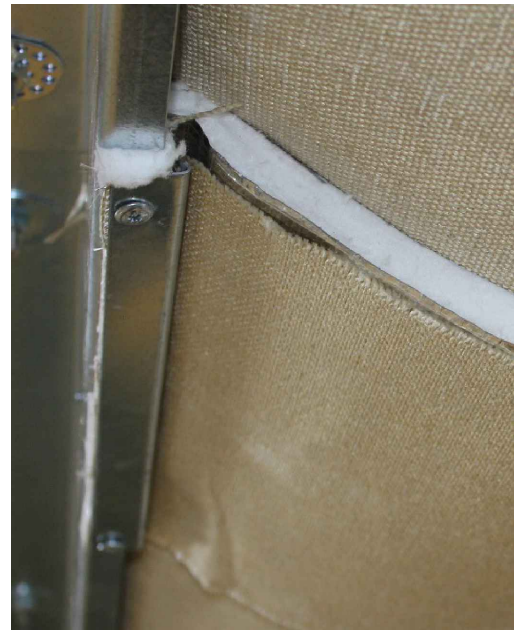
# STEP 7 CON'T

## SPLICE KIT INSTALLATION

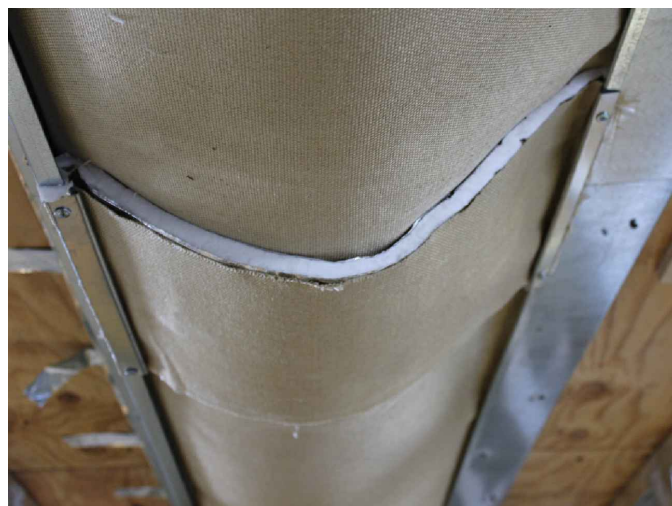
- 7.4) At the butt splice location loosen the last two fasteners near the ends of each galvanized flange to allow room behind the flange for installation of splice.
- 7.5) Tuck one end of the assembled (taped) splice insulation and fabric in between the galvanized flange and fabric material of the installed fire barrier. Allow the Splice material to wrap down and over the galvanized flange edge of the installed fire barrier. (Fig. 7G)
- 7.6) Attach the Galvanized Flange, supplied in the Splice Kit, installing over the Lateral Slide 2FB17UM-L galvanized flange and the Splice assembled insulation. (Fig. 7H-7J)
- 7.7) Repeat Steps 7.5-7.6 for the opposite side of the Splice joint.
- 7.8) Tighten the loosened galvanized flange fasteners to draw-up the galvanized flange to sit tight against the bottom of the floor substrate.



(Fig. 7G)



(Fig. 7H)



(Fig. 7J)

# STEP 8

## CUTTING DOWN A FIRE BARRIER LENGTH

**Note:** If a 10' length of Fire Barrier needs to be cut down follow the instructions below to properly cut the Lateral Slide 2FB17UM-L blanket and the galvanized retainers. Make sure the Bottom Blanket Splice End is in the proper orientation to splice the Lateral Slide 2FB17UM-L lengths together.

- 8.1) Having the Bottom Blanket Splice End, with the bottom 2 layers extended, measure in from the end of the top two blanket layers the fire barrier length needed to complete the run. Mark a reference cut line on blanket. Extended the measurement to the opposite side of the Lateral Slide 2FB17UM-L and draw a cut line across the galvanized flanges and 2FB17UM-L fabric to follow. (Fig. 8A-8C)
- 8.2) Cut the galvanized flanges using a grinder and a utility knife to cut the fire barrier blanket material along the marked cutting line.
- 8.3) Follow installation instructions Steps 1 through 7 to install the cut down Lateral Slide 2FB17UM-L segments in the joint or to splice together.

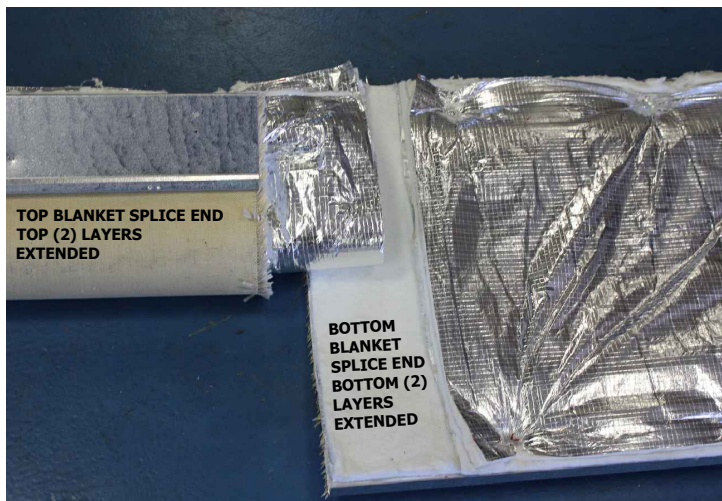


Fig. 8A



Fig. 8B



Fig. 8C

# STEP 9

## COMPLETE INSTALLATION

9.1) The installation of the 2 hour Fire Barrier 17 Under Mount Lateral Slide (2FB17UM-L) is now complete. (Fig. 9A-9B)



Fig. 9A

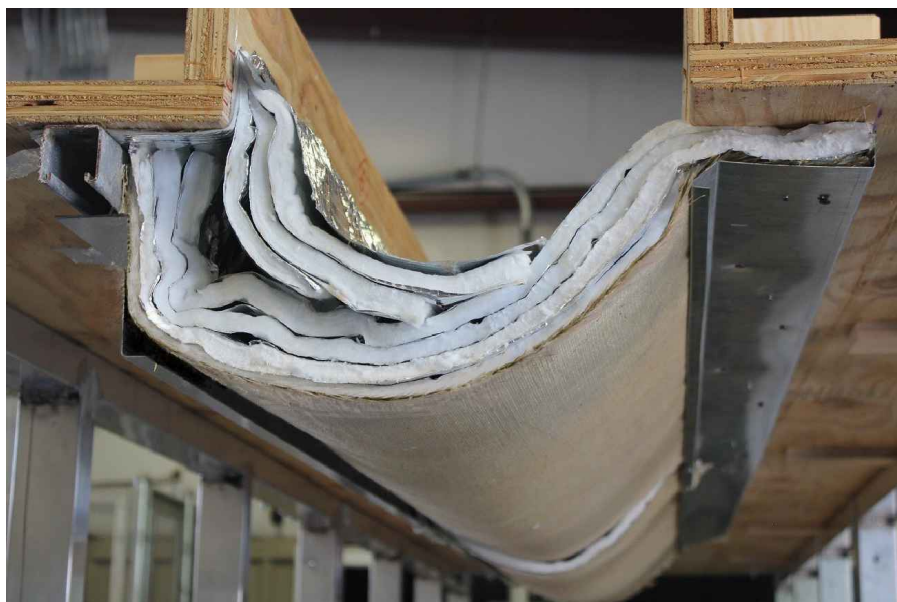


Fig. 9B