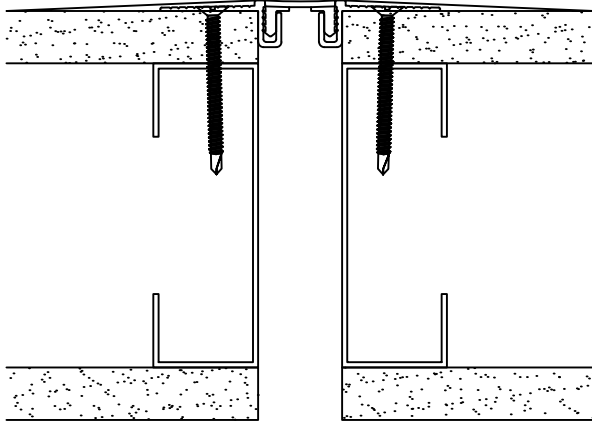
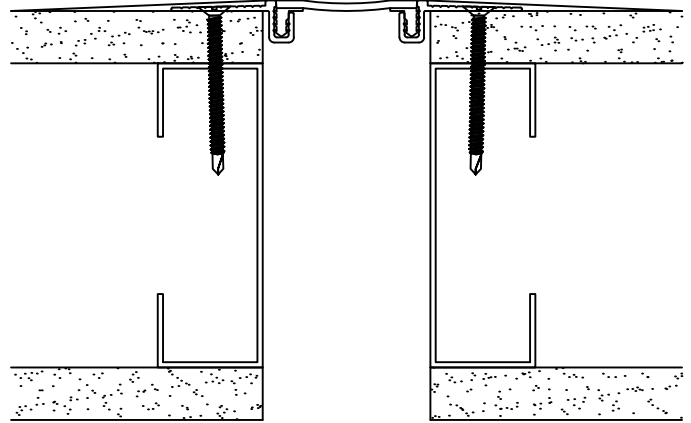


# MODEL FWF/FWFC-100/200 INSTALLATION INSTRUCTIONS

FWF-100



FWF-200



## IMPORTANT INFORMATION

Prior to the commencement of Installation, all materials **MUST** be inspected for Damage. Any damage must be reported to CONSTRUCTION SPECIALTIES, INC., as soon as possible, so that replacement materials may be furnished without delay.

All work must be completed as per Architect's Approved "Shop Drawings", and in accordance with these Installation Instructions. When installation is complete, all materials must be protected from damage until the Architect's FINAL INSPECTION.

All materials should be arranged in the order that they are to be installed. All hardware required for each portion of the work should be placed with the appropriate materials.

Please review all Approved Shop Drawings and this Document to familiarize yourself with all the details and components of this assembly.

**IMPORTANT:**  
**READ THROUGH ALL INSTRUCTIONS PRIOR TO STARTING INSTALLATION**

11/25/25



**Construction Specialties®**  
[www.c-sgroup.com](http://www.c-sgroup.com)

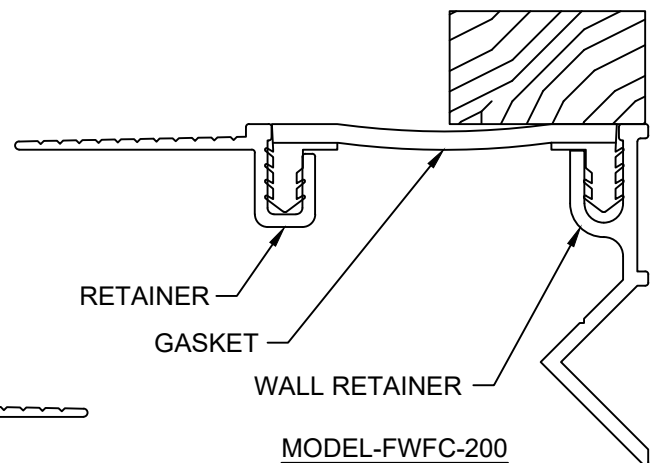
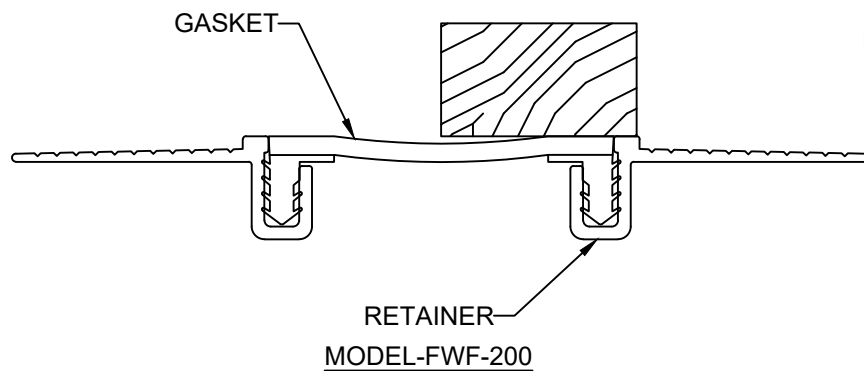
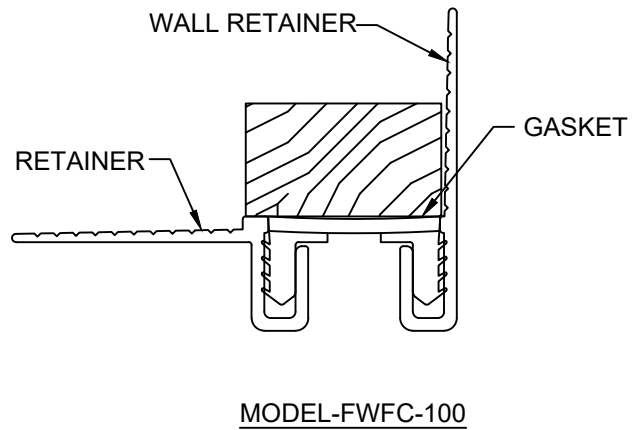
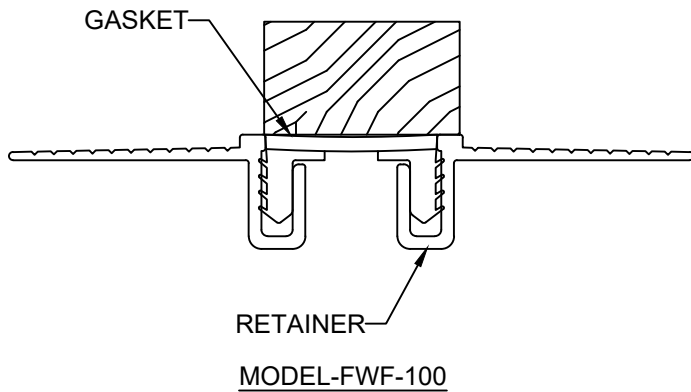
6696 Route 405 Highway, Muncy, PA 17756  
Phone: (800) 233-8493 / Fax: (570) 546-8022

This document is the property of Construction Specialties, Inc. and contains PROPRIETARY INFORMATION that is not to be disclosed to third parties and is not to be used without approval in writing from Construction Specialties, Inc.

© Copyright 2016 Construction Specialties, Inc.

# STEP 1

## SEAL INSTALLATION



### Note:

If a C/S Fire Barrier is to be installed in the joint, please review the Fire Barrier Installation Instructions supplied, and if required install the Fire Barrier BEFORE installation of C/S Expansion Joint aluminum frames.

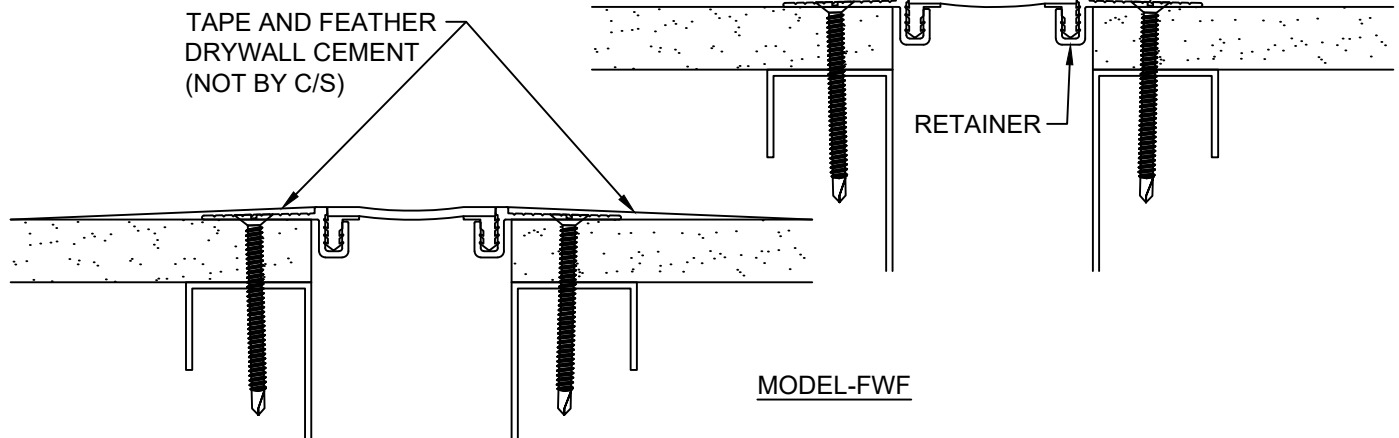
Prior to installation, assemble the gasket and retainers.

- 1.1) Measure and cut the Retainer(s) and gasket to the appropriate length required.
- 1.2) Install the gasket into the aluminum retainers. In most cases hand pressure will be sufficient to seat the gasket into the retainer. If necessary, you may use a rubber mallet and wood block to gently seat the gasket flush with the surface of the retainer.

Tip: If you spray the push in arrows with soapy water, the gasket slides in much easier.

# STEP 2

## INSTALLATION OF FWF/FWFC EXPANSION JOINT COVER



2.1) With the substrate and expansion joint constructed per the architectural drawings and specifications, align the Joint Cover Assembly over the joint and anchor the aluminum retainers with the C/S Supplied Fasteners.

2.2) Repeat this installation procedure for any additional lengths of Cover required. (See Splicing information in Step 3 on page 5)

### Corner Wall Application:

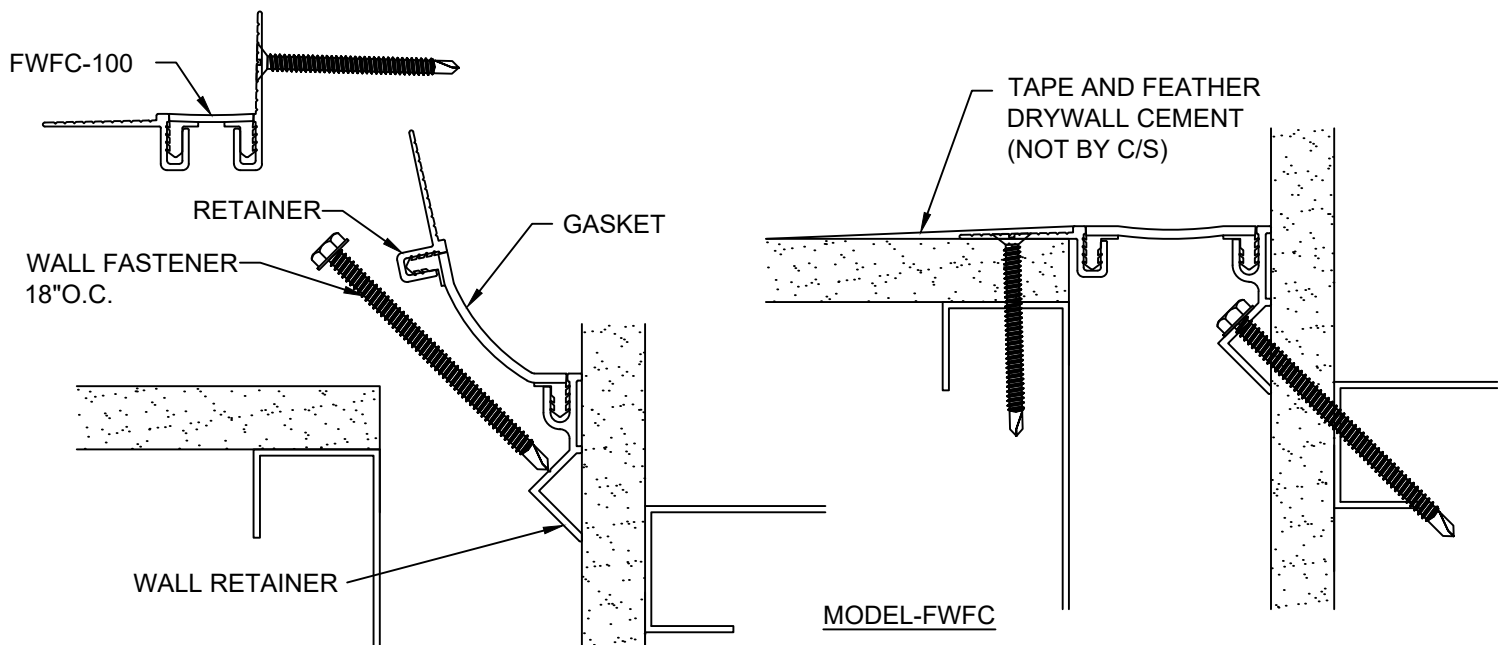
2.1w) Fasten the corner Wall Retainer into place using the C/S supplied fasteners.

2.3w) Position and Fasten the other wall retainer into place with the C/S supplied fasteners.

2.4w) Repeat this installation procedure for any additional lengths of Cover required. (See Splicing information in Step 3 on page 5)

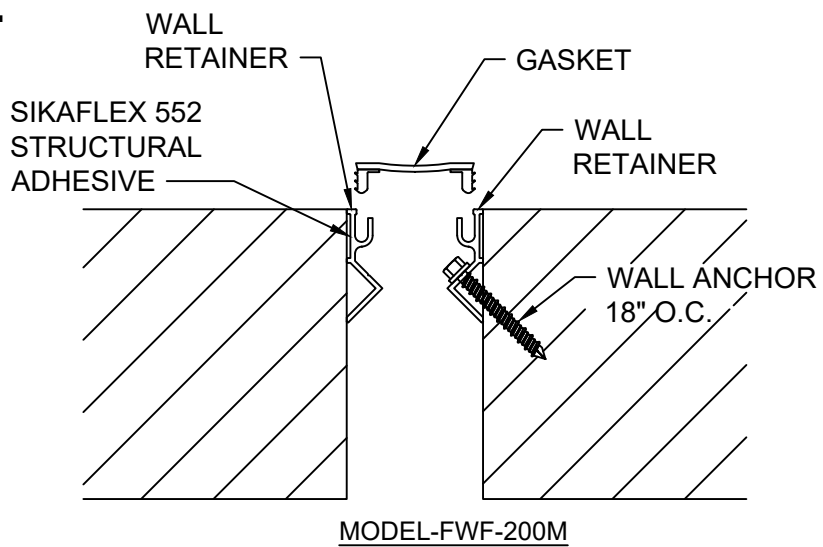
2.5w) Tape the edge of the Aluminum Retainer and feather drywall cement to provide a smooth transition to the drywall.

Note: See sheet 4 for alternate Retainer installation.

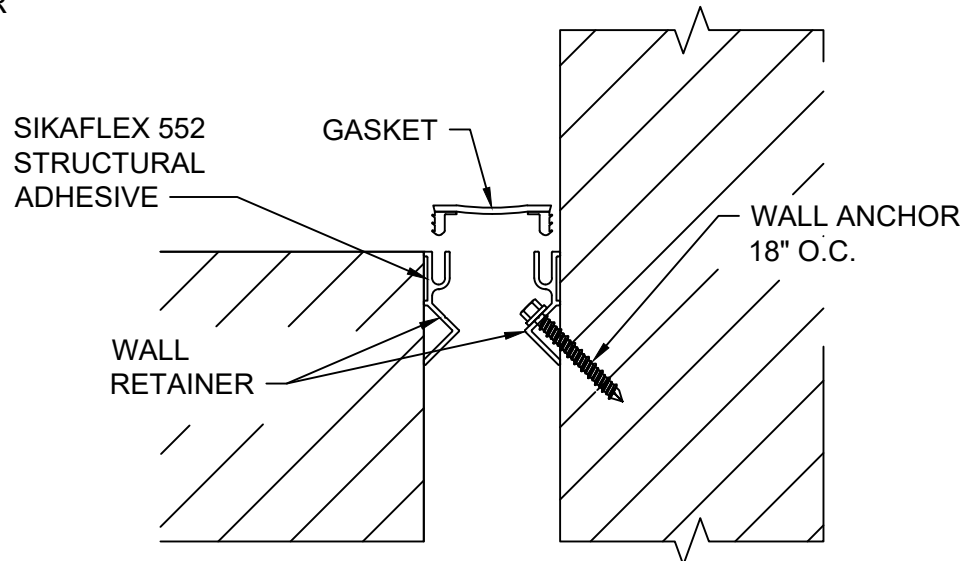
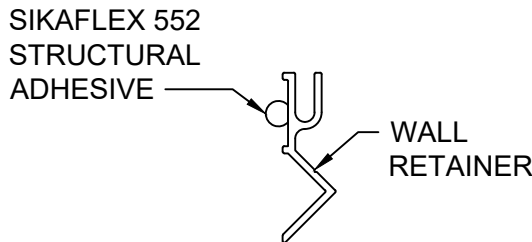


# STEP 2 CON'T

## INSTALLATION OF FWF/FWFC-M EXPANSION JOINT COVER.



MODEL-FWF-200M



MODEL-FWFC-200M

### Step 1 :

#### Adhesive Application:

Note: At corner wall applications, at smaller joint widths, it is not possible to drill to anchor the wall side frame. Also, at substrates where a mechanical anchor cannot be used, the frame(s) may be installed using a structural adhesive (Sikaflex-552). Note: Minimum application temperature is 40°F.

- 1.) Any substrate that has a glossy surface must be abraded with 3M Scotch-Brite (or similar), Fine or Extra Fine grade. Clean the abraded surface with Isopropyl Alcohol minimum 70% on clean dry rags. For non-glossy substrates, such as concrete, assure that the substrate is clean, dry and free from all traces of grease, oil, wax and dust.
- 2.) Clean the back side of a piece of the Wall Retainer with Isopropyl Alcohol minimum 70% on clean dry rags.
- 3.) Apply a 1/4" bead of the CS supplied Sikaflex 552 to the back of the Retainer at the location shown above.
- 4.) Beginning at one end of the run, start installation of the Retainer by positioning the Retainer at the appropriate dimension recessed back from the joint edge, consistent along the full length. (Reference CS shop drawings).
- 5.) Seat the Retainer against the substrate and apply slight pressure to spread the adhesive and to assure consistent contact against the surface. Note: The front edge of the Retainer should not be tight to the substrate leaving approximately 1/16" gap. Adjust positioning as needed.
- 6.) Use strips of masking tape, painters tape or duct tape, or Styrofoam wedge blocks to hold the Retainer in position until the adhesive sets sufficiently (minimum 24-hours, 48- hours when substrate and frame temperatures are below 60°F.).
- 7.) Repeat for additional Retainer lengths as needed.
- 8.) Proceed to Step 2 when the Retainer only move slightly when pushed inward on the front edges.

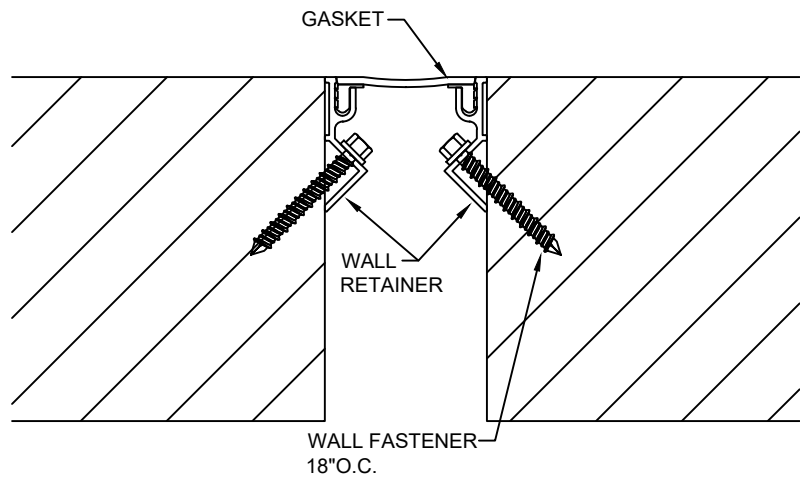
Note: Refer to the Sikaflex 552 product data sheet for additional manufacturer recommended application guidelines.

Note: CS has tested the Sikaflex 552 for performance on various substrates, however, before proceeding a bond trial should be conducted at an inconspicuous location.

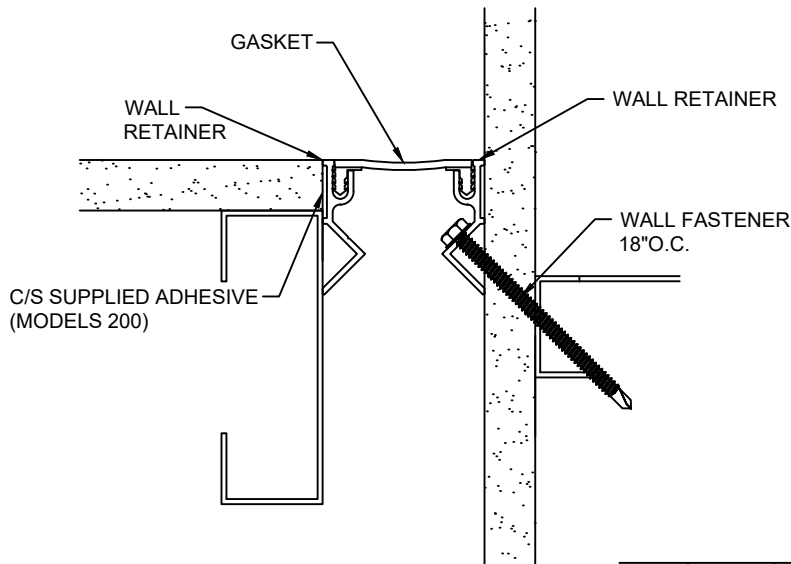
Note: If additional adhesive is needed urgently, Liquid Nails, Fuze-It can be substituted. CS has tested the Fuze-It for performance on various substrates and found it to be acceptable for this application. Fuze-It is available through Grainger and many home improvement locations. Follow the surface preparation guidelines above, as well as, the manufacturer's guidelines.

# STEP 3

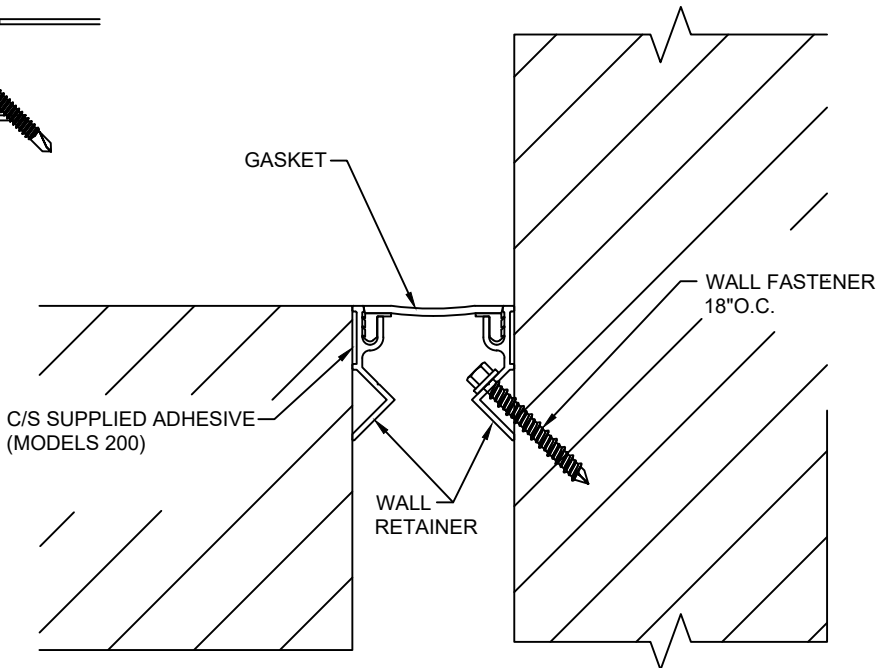
## COMPLETE INSTALLATION



MODEL-FWF-200M



MODEL-FWFC-200M



MODEL-FWFC-200M

### Splicing:

- 3.1) Wipe ends of seals to be bonded with alcohol (or similar) to remove all dirt, moisture, and oils that might affect the bond. Apply "Super Glue" adhesive (not supplied) to the entire cut surface of the seal. **IMPORTANT: PLEASE OBSERVE THE SAFETY PRECAUTIONS ON THE ADHESIVE CONTAINER!**
- 3.2) Align and bring the ends of the two seals together. Apply pressure against the ends of the seal until the adhesive has set.
- 3.3) Tape the edges of the Aluminum Retainer and feather drywall cement to provide a smooth transition to the drywall.
- 3.4) When installation of the C/S Expansion Joint Cover has been completed, remove all residue and foreign matter from the area and joint cover.
- 3.5) Clean the C/S Joint Cover and adjoining surfaces with proper cleaner.
- 3.6) Protect the Joint Cover until the Architect's final inspection.