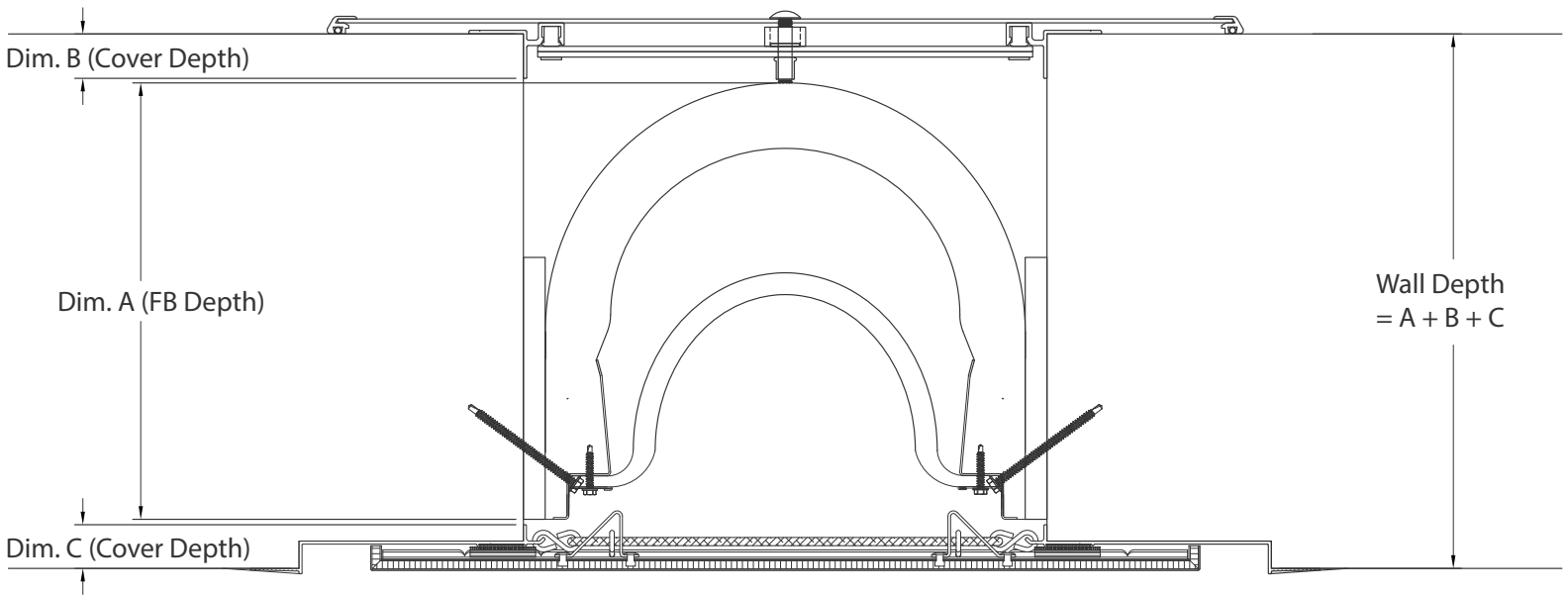


# Wall Depth Calculator - FB-17 - 2HR & 3HR



\*IMPORTANT NOTE: For wall fire barrier systems to perform properly in terms of fire rating and movement capabilities, it is important that an adequate wall depth is constructed for installation.

**A + B + C = Total Wall Depth**

### Dim. A

MAX OPEN	FB-17 DEPTH
9" (22.86cm)	7" (17.78cm)
12" (30.48cm)	8" (20.32cm)
15" (38.1cm)	9" (22.86cm)
18" (45.72cm)	10" (25.40cm)
21" (53.34cm)	11" (27.94cm)
24" (60.96cm)	12" (30.48cm)
27" (68.58cm)	13" (33.02cm)
30" (76.2cm)	14" (35.56cm)

### Dim. B & C

WALL COVER MODEL	NOMINAL JOINT SIZE RANGE	COVER DEPTH
AFW/AFWC	5" - 8" (12.70cm - 20.32cm)	5/8" (1.59cm)
FWF/FWFC	6" - 10" (15.24cm - 25.40cm)	2 1/4" (5.72cm)
FWS/FWSC	6" - 10" (15.24cm - 25.40cm)	2 1/4" (5.72cm)
LAF-2G	5" - 20" (12.70cm - 50.8cm)	1 1/8" (2.86cm)
L AFC-2G	5" - 20" (12.70cm - 50.8cm)	1 3/4" (4.45cm)
LAS-2G	5" - 20" (12.70cm - 50.8cm)	1/2" (1.27cm)
LASC-2G	5" - 20" (12.70cm - 50.8cm)	1 1/8" (2.86cm)
PC-2G/PCW-2G	5" - 16" (12.70cm - 40.64cm)	0" (0.00cm)
SFW/SFC	5" - 16" (12.70cm - 40.64cm)	1 1/8" (2.86cm)
SGW	5" - 16" (12.70cm - 40.64cm)	1 3/4" (4.45cm)
SGWC	5" - 16" (12.70cm - 40.64cm)	2 5/8" (6.67cm)

Contact factory for nominal joint sizes larger than 20".