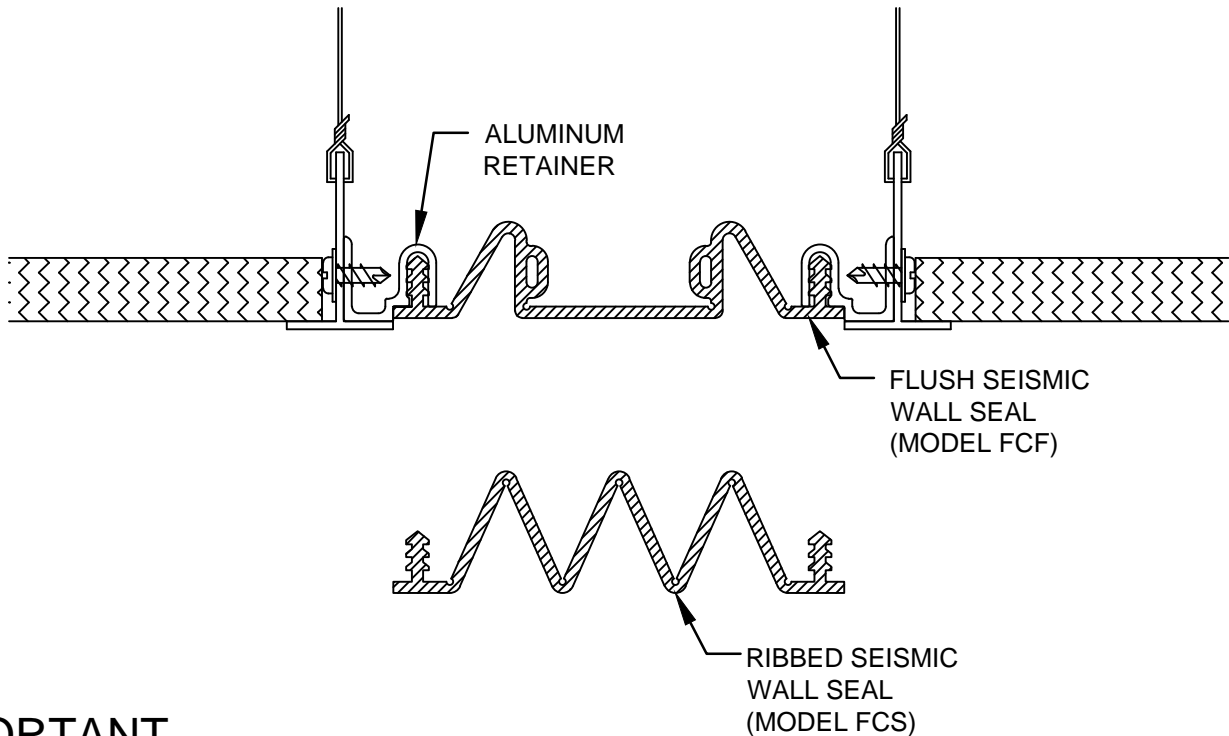


FCF/FCFC-300/500 & FCS/FCSC-200/400 FLUSH INTERIOR EXPANSION JOINT COVER INSTALLATION INSTRUCTIONS



IMPORTANT INFORMATION

Prior to the commencement of Installation, all materials **MUST** be inspected for Damage. Any damage must be reported to CONSTRUCTION SPECIALTIES, INC., as soon as possible, so that replacement materials may be furnished without delay.

All work must be completed as per Architect's Approved "Shop Drawings", and in accordance with these Installation Instructions. When installation is complete, all materials must be protected from damage until the Architect's FINAL INSPECTION.

All materials should be arranged in the order that they are to be installed. All hardware required for each portion of the work should be placed with the appropriate materials.

Please review all Approved Shop Drawings and this Document to familiarize yourself with all the details and components of this assembly.

IMPORTANT:

READ THROUGH ALL INSTRUCTIONS PRIOR TO STARTING INSTALLATION

8/31/12



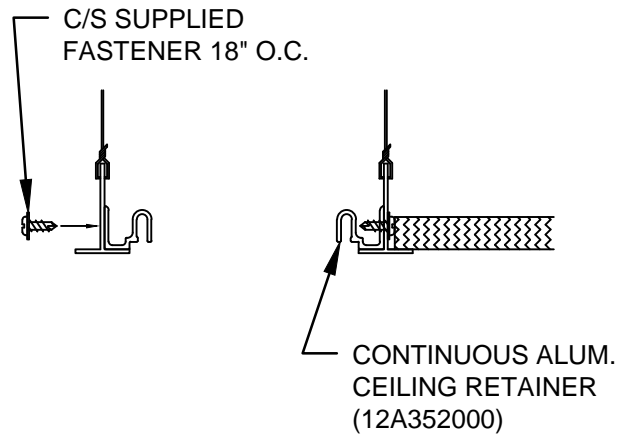
Construction Specialties™

6696 Route 405 Highway, Muncy PA 17756
(800) 233-8493 Fax (570) 546-5169 www.c-sgroup.com

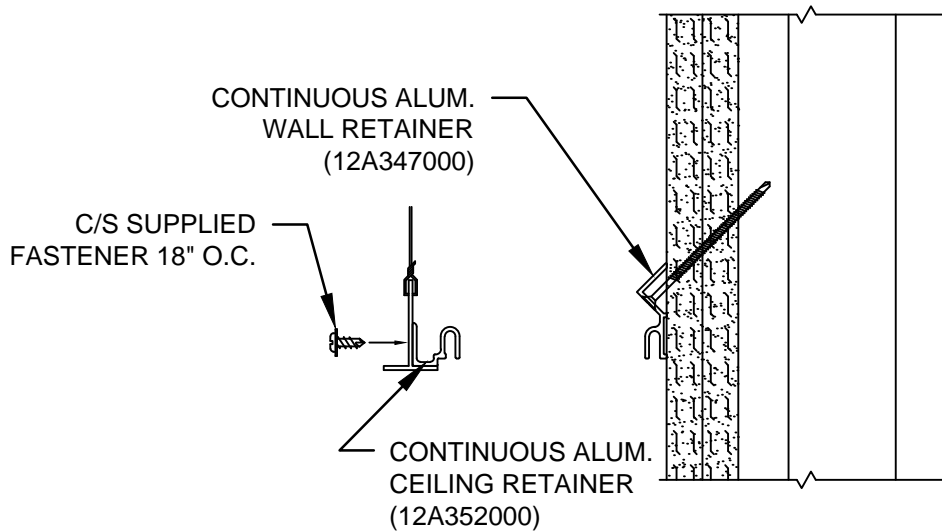
This document is the property of Construction Specialties, Inc. and contains CONFIDENTIAL PROPRIETARY INFORMATION that is not to be disclosed to third parties and is not to be used without approval in writing from Construction Specialties, Inc.

STEP 1

INSTALLATION OF ALUMINUM FRAMES



FLAT WALL CONDITION



CORNER WALL CONDITION

Step 1:

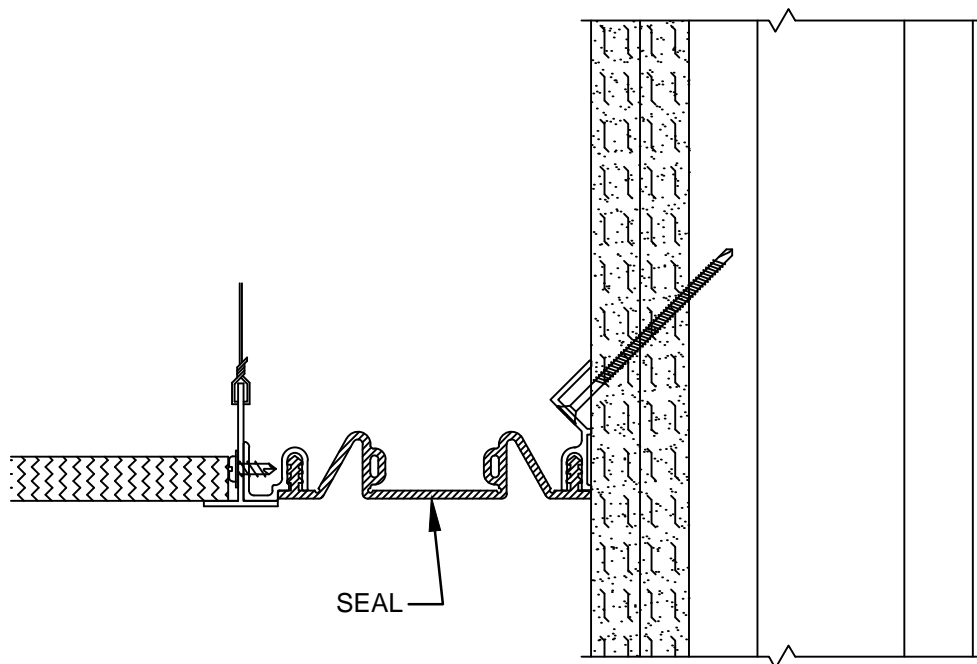
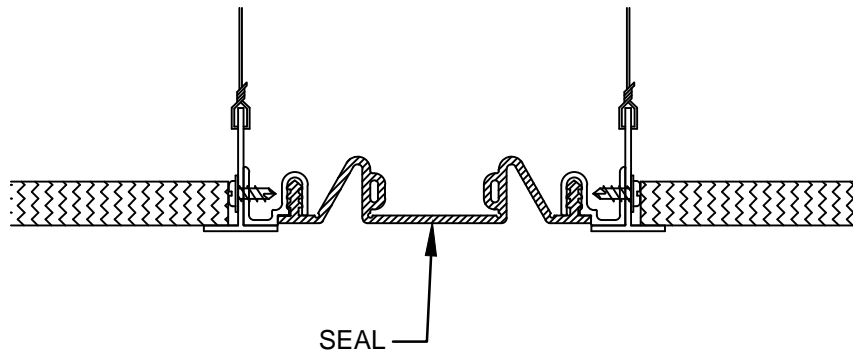
- 1.1 Measure and cut the Retainer to the appropriate length.
- 1.2 Position the Retainer on the ceiling tee or wall as shown.
- 1.3 Anchor the Retainer with the C/S supplied fasteners.

Note: Depending on the wall construction, it may be necessary to pre-drill holes for the C/S supplied fasteners.

- 1.4 Repeat for installation of Retainer for the other side of the expansion joint.

STEP 2

SEAL INSTALLATION



Step 2:

2.1) Cut the length of seal as needed for the run (see step 3 for cutting and splicing instructions).

2.2) Starting at one end of the run, insert seal into the slots of the frame

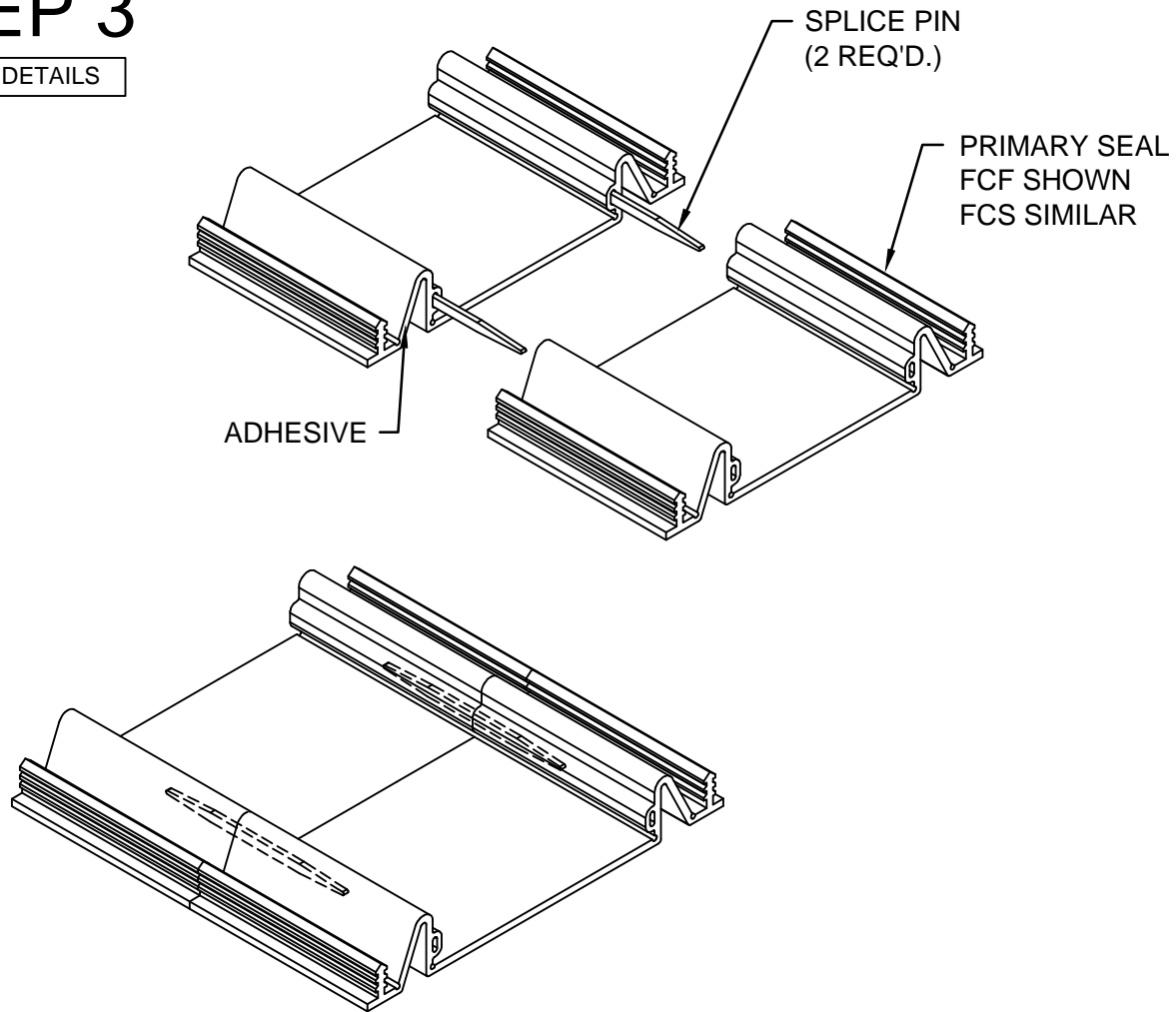
NOTE: In most cases hand pressure will be sufficient to seat the seal in the retainer. If necessary, you may use a rubber mallet and a wood block to gently seat the seal flush with the surface of the retainer.

TIP: If you spray the push in arrows with soapy water, the seal slides in much easier.

2.3) Any dirt may be removed by using an industrial strength cleaner. Installation of the expansion joint cover is now complete.

STEP 3

SPLICE DETAILS



PRIMARY SEAL SPLICE

Step 3:

Cutting:

- 3.1 Determine the length of seal required for the applicable area and measure and mark the seal.
- 3.2 Place the seal with the location to be cut into a miter box and flood the gasket area to be cut with water to lubricate the hacksaw blade.
- 3.3 Using a hacksaw and the C/S supplied serrated hacksaw saw blade, make the cut using long strokes while applying downward force when cutting. The cut should be made with as few strokes as possible in order to prevent a ragged end on the seal.

Splicing:

- 3.4 Wipe surface of the Splice Pins and the ends of the seals to be bonded with alcohol (or similar) to remove all dirt, moisture, and oils that might affect the bond.
- 3.5 When appropriate, apply the 3M CA-40 adhesive to half of each Splice Pin. Insert only the portion of the pin with adhesive into the splice pin slot of one of the seals. **IMPORTANT: PLEASE OBSERVE THE SAFETY PRECAUTIONS ON THE ADHESIVE CONTAINER!**
- 3.6 Apply the CA-40 adhesive to the entire cut surface of the Seal and the remaining portion of the Splice Pin.
- 3.7 Align the two ends of each Seal, insert the Splice Pin into the opposite seal and bring the ends of the seal together. Apply pressure against the end of the seals until the adhesive has set.