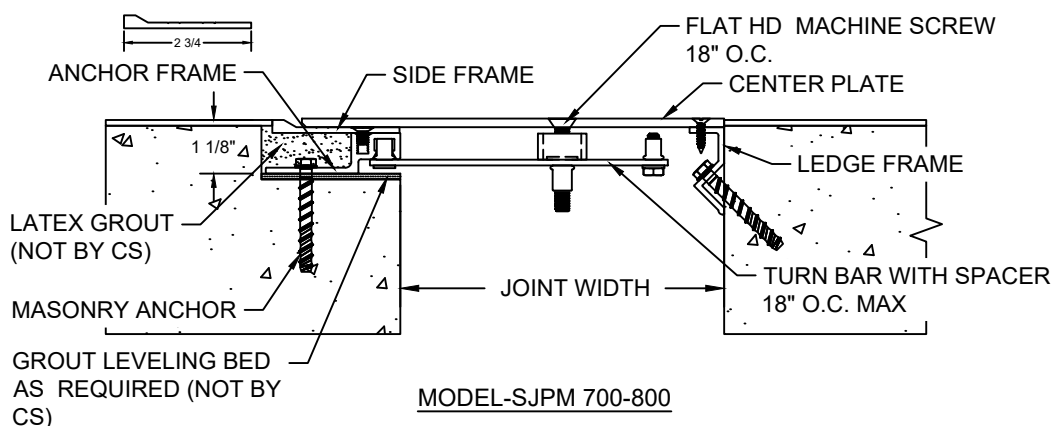
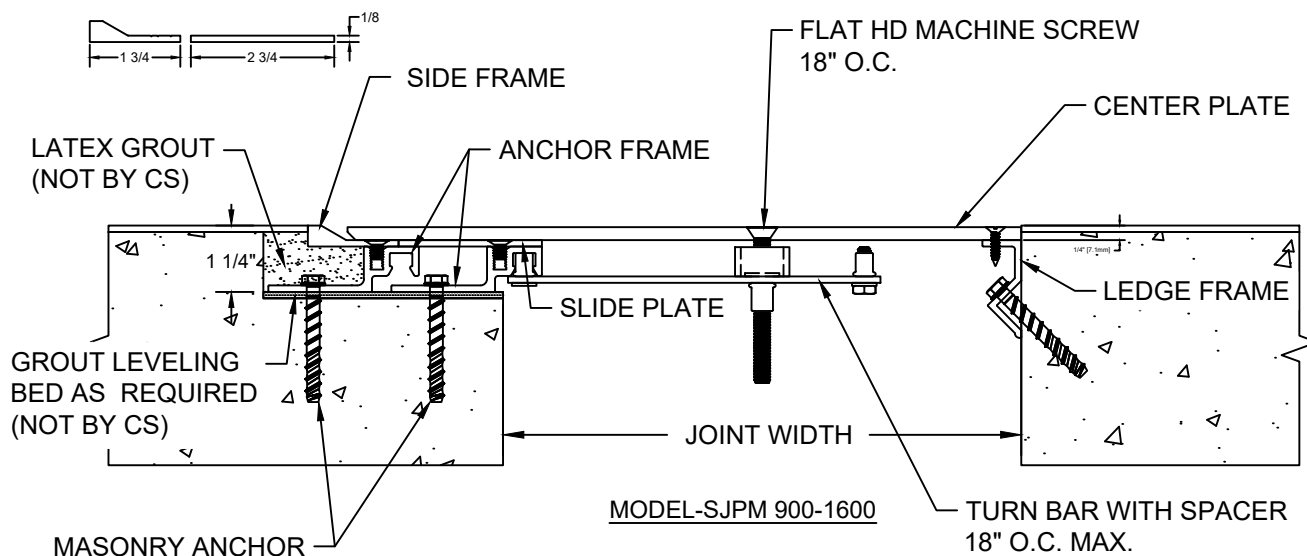


# MODEL SJPFM 700-1600

## INSTALLATION INSTRUCTIONS

12EA



### IMPORTANT INFORMATION

Prior to the commencement of Installation, all materials MUST be inspected for Damage. Any damage must be reported to CONSTRUCTION SPECIALTIES, INC., as soon as possible, so that replacement materials may be furnished without delay.

All work must be completed as per Architect's Approved "Shop Drawings", and in accordance with these Installation Instructions. When installation is complete, all materials must be protected from damage until the Architect's FINAL INSPECTION.

All materials should be arranged in the order that they are to be installed. All hardware required for each portion of the work should be placed with the appropriate materials.

Please review all Approved Shop Drawings and this Document to familiarize yourself with all the details and components of this assembly.

### IMPORTANT:

READ THROUGH ALL INSTRUCTIONS PRIOR TO STARTING INSTALLATION

4/01/25



**Construction Specialties®**

[www.CSgroup.com](http://www.CSgroup.com)

6696 Route 405 Highway, Muncy, PA 17756  
Phone: (800) 233-8493 / Fax: (570) 546-8022

This document is the property of Construction Specialties, Inc. and contains PROPRIETARY INFORMATION that is not to be disclosed to third parties and is not to be used without approval in writing from Construction Specialties, Inc.

© Copyright 2016 Construction Specialties, Inc.

Notes:

Before beginning installation, review the architectural drawings and approved Construction Specialties Inc. shop drawings to familiarize yourself with the appropriate joint cover models and locations.

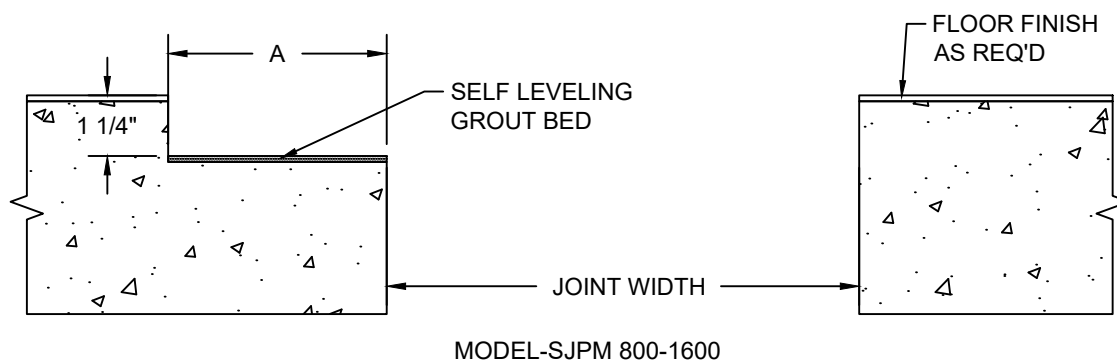
Check all of the joint cover components to confirm that the correct joint cover model and size have been received. Also, check for materials that may have been damaged during shipping. Report all incorrect and/or damaged components to CS at 800-233-8493.

Read through all the steps of these instructions prior to beginning work.

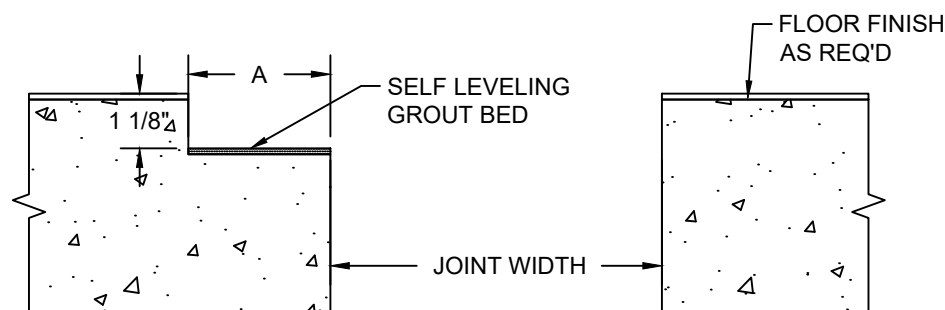
# STEP 1

## PREPARE BLOCKOUTS

BLOCKOUT DIMENSIONS	
JT. SIZE	DIM. A
7"	3"
8"	3 3/8"
9"	4 5/8"
10"	4 5/8"
11"	4 5/8"
12"	4 7/8"
13"	5 1/8"
14"	5 3/8"
15"	5 5/8"
16"	5 7/8"



MODEL-SJPM 800-1600



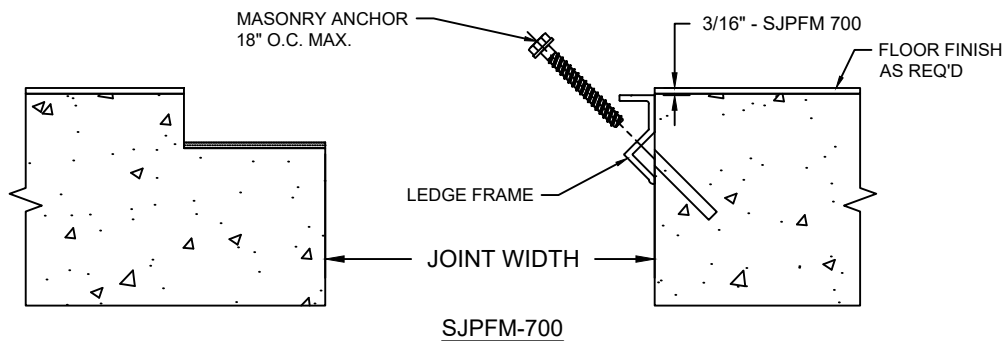
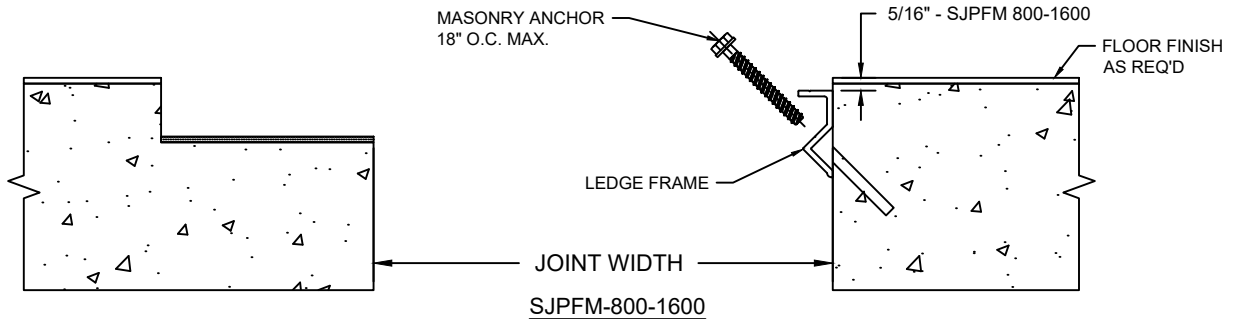
MODEL-SJPFM 700

1.1) The blockouts must be prepared to receive the joint cover.

- The blockout width will vary with model, see DIM. A in chart above or as noted on the CS shop drawings.
- The blockout depth will typically be 1-1/8" for 700 model and 1-1/4" for models 800-1600.
- Blockout depth may be adjusted as needed to accommodate a floor finish material when req'd and as indicated on the architectural drawings and/or CS shop drawings.
- It is recommended that the blockout be formed a minimum of 1/8" deeper to allow the blockouts to be leveled for installation of the joint cover.
- Apply a self leveling grout to the base of the blockouts to provide a continuous, solid, flat and level base for the joint cover. (Note: The blockouts must be level across the width of the joint.)

# STEP 2

## LEDGE FRAME INSTALLATION



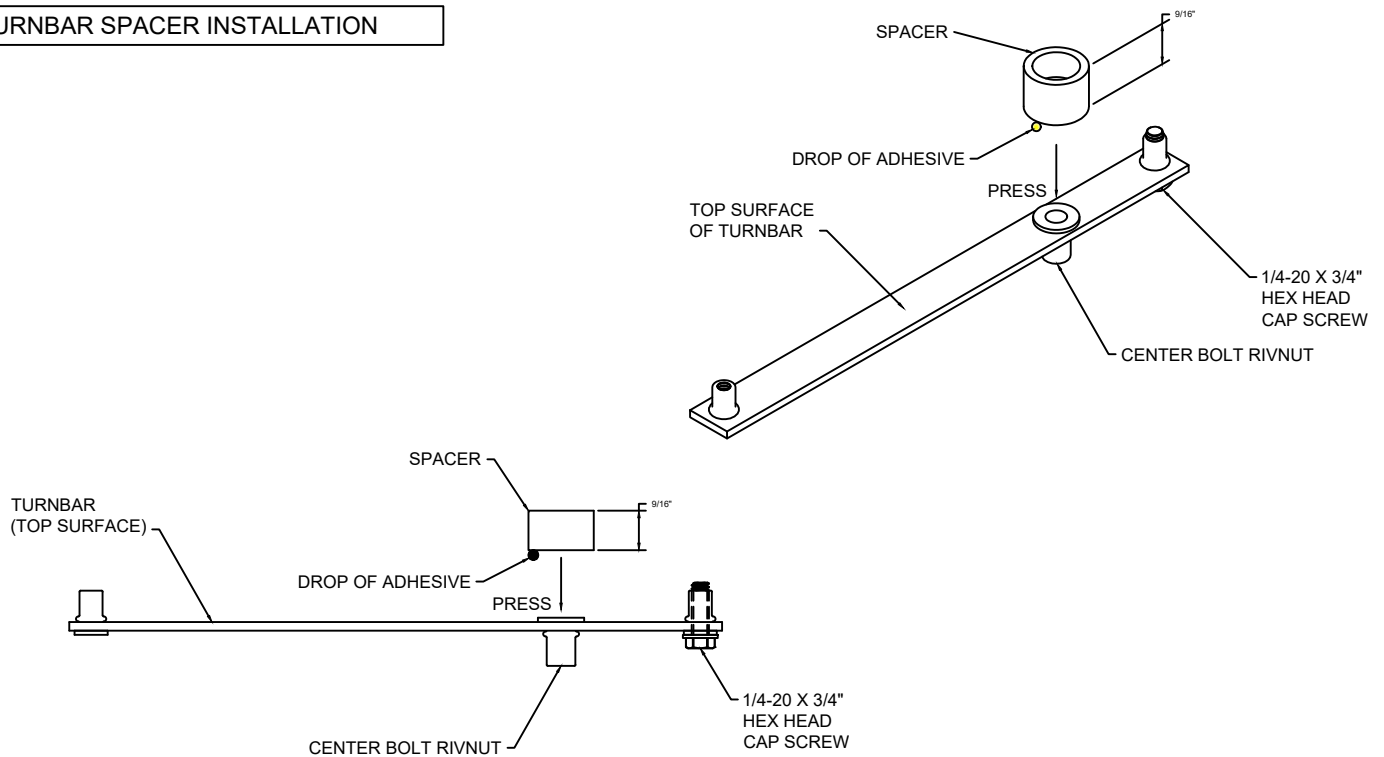
### Note:

- If a CS Fire Barrier is to be installed in the joint, please review the Fire Barrier Installation Instructions supplied, and if required install the Fire Barrier **BEFORE** installation of CS Seismic Expansion Joint Aluminum Frames.
- If a Vapor Barrier is to be installed in the joint, please review the Vapor Barrier Installation Instructions supplied, and if required install the Vapor Barrier **BEFORE** installation of CS Seismic Expansion Joint Aluminum Frames.

- 2.1) Begin installation of the Ledge Frame by cutting the Frame to length as needed. The Ledge Frame is to sit 3/16" for SJPFM 700 model & 5/16" for SJPFM 800-1600 models below the finish floor elevation. Measure and mark the top of the Ledge Frame snapping a chalk line.
- 2.2) Using the Ledge Frame as a template and holding along the snapped chalk line, mark the hole locations on the joint wall for the supplied anchor bolts. Remove the Ledge Frame and drill the holes for the anchor bolts per the manufacturer guidelines.
- 2.3) Reposition and anchor the Ledge Frame to the joint wall with the supplied anchor bolts following the manufacturer's guidelines.
- 2.3) Repeat the installation procedures for any additional lengths of Ledge Frame.

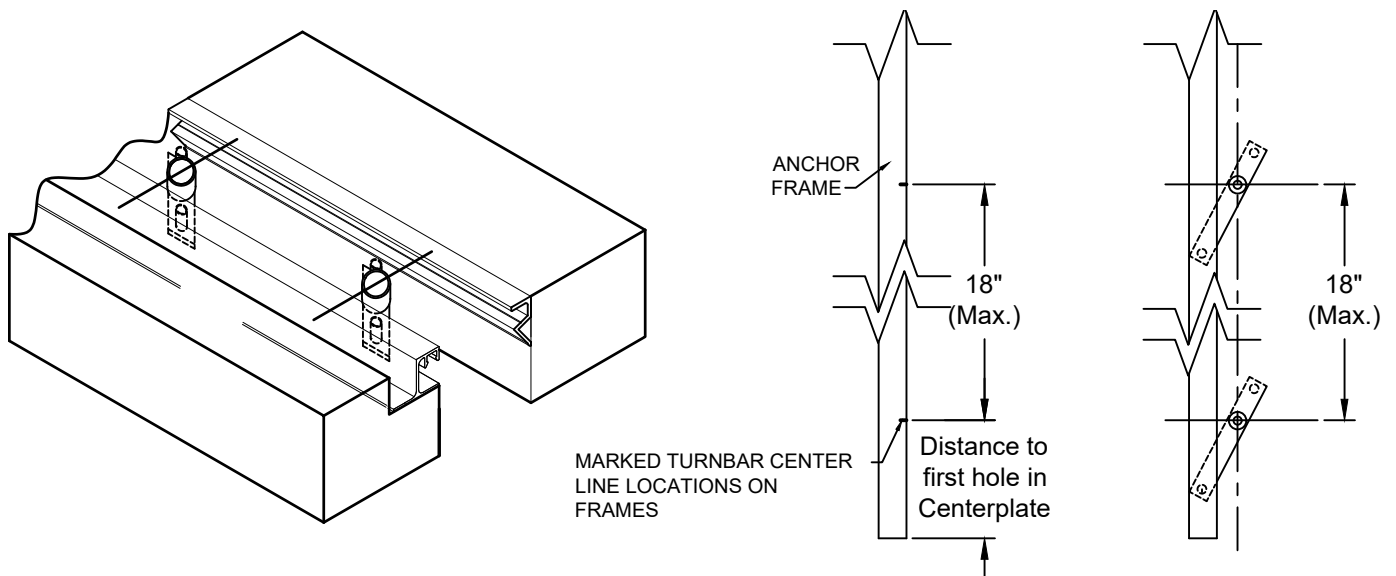
# STEP 3

## TURNBAR SPACER INSTALLATION



**Note:** A Spacer must be placed between the Turnbar and the underside (or backside) of the cover plate. The Spacer is used to prevent excess bowing of the Turnbars when the center bolt is tightened. (Some bowing of the Turnbars is required to apply the holding force on the cover plate.)

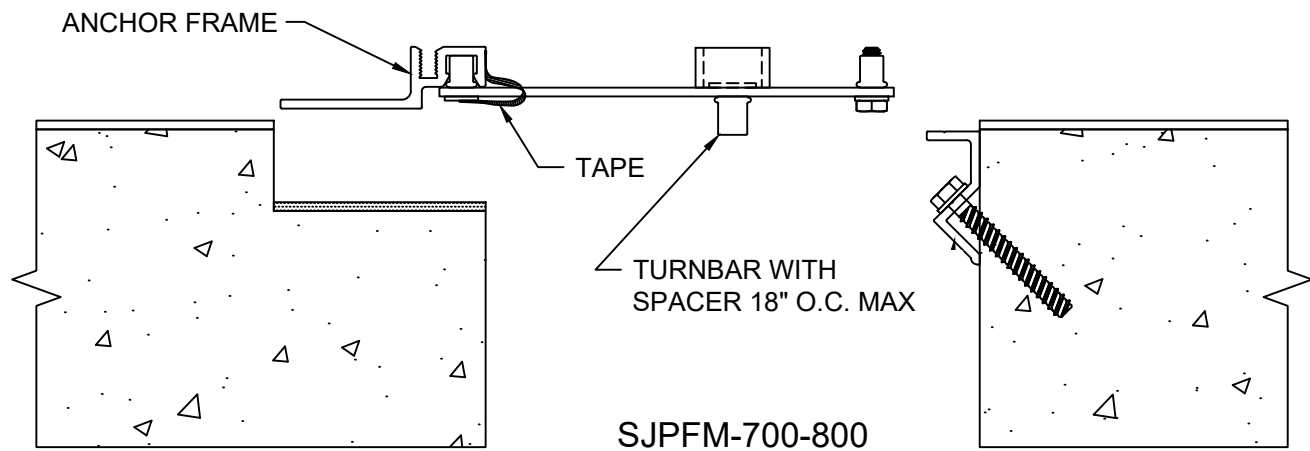
- 3.1) Place a small drop of "super glue" adhesive (not supplied) onto one end of a Spacer.
- 3.2) Position the end of the Spacer with the adhesive against the top surface of the Turnbar, centered over the flat head portion of the Center Bolt Rivnut. Press firmly for a few seconds until the Spacer is bonded to the Turnbar.
- 3.3) Install the Turnbars as instructed noting the orientation of the Turnbars in the detail below. The Turnbar when tightened will rotate in a clock wise motion. For models of 700-800 see Step 4 and Models of 900-1600 see Step 9.



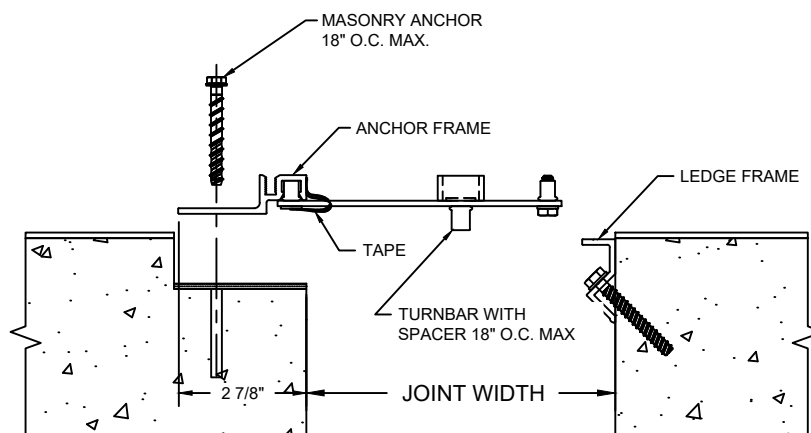
# STEP 4

## ANCHOR FRAME INSTALLATION MODELS 700-800

- 4.1) The Anchor Frame is located at 2 7/8" back from the joint edge to the Anchor Frame leg for models 700 & 800. Begin installation of the Anchor Frame by placing a length of Anchor Frame into the blockout and cut to length as needed. The Anchor Frame is to sit level, flat and parallel to the edge of the joint. The Anchor Frame should not sit above the top surface of the slab (except to accommodate floor finish).
- 4.2) Using the Anchor Frame as a template, mark the locations in the blockout for the anchor bolts. Remove the Anchor Frame and drill the holes for the anchor bolts following the manufacturer's guidelines.
- 4.3) Prepare the Center Plate by first cutting the Plate to length as needed. Using the Center Plate drilled hole locations, measure and mark the Turnbar centerline locations, on the Anchor Frames. Maximum of 18" O.C. between turnbar centerlines.
- 4.4) Place the Turnbar pivot into the pivot pin receiver of the frame and align Turnbar centerline with the marked locations on the frame. (Note the orientation of the Turnbars when tightened will rotate in a clock wise motion.) Tape Turnbar in place by attaching tape from the underside of turnbar up and around to the face of the frame. Remove any tape ends that extend above the frame. Repeat installation at each Turnbar centerline location marked on the frame.
- 4.5) Reposition the Anchor Frame and attach to the slab with the supplied anchors. Repeat installation for any additional lengths of Frames.
- 4.6) Apply an epoxy cement grout in blockout. The grout must be poured level with the blockout.



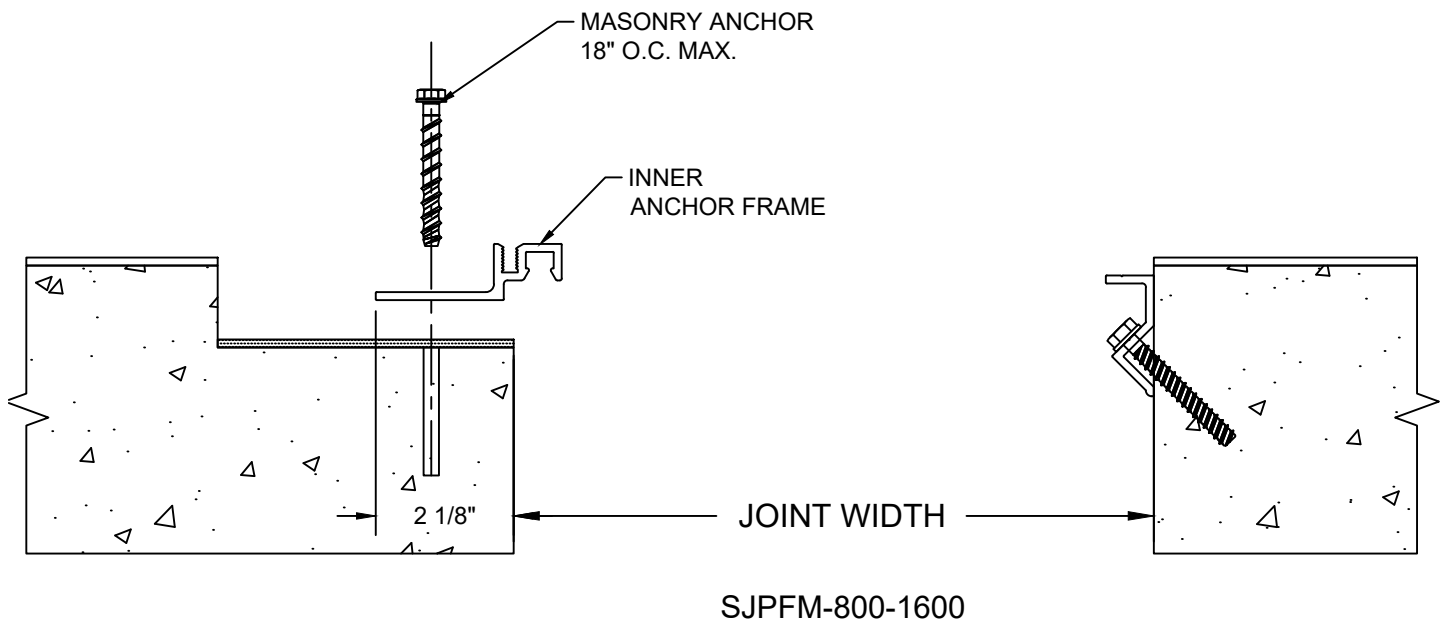
NOTE: TURNBARS MUST BE PLACED IN FRAMES PRIOR TO FRAME ATTACHMENT



# STEP 5

## INNER ANCHOR FRAME INSTALLATION MODELS 900-1600

- 5.1) The inner Anchor Frame is located at 2 1/8" back from the joint edge to the Anchor Frame leg for models 900 & 1600. Begin installation of the inner Anchor Frame by placing a length of Anchor Frame into the blockout and cut to length as needed. The Anchor Frame is to sit level, flat and parallel to the edge of the joint. The Anchor Frame should not sit above the top surface of the slab (except to accommodate floor finish).
- 5.2) Using the Anchor Frame as a template, mark the locations in the blockout for the anchor bolts. Remove the Anchor Frame and drill the holes for anchor bolts following manufacturer's guidelines. Reposition the Frame and anchor to the slab with the supplied anchor bolts
- 5.3) Repeat the installation procedures for any additional lengths of the inner Anchor Frame.



# STEP 6

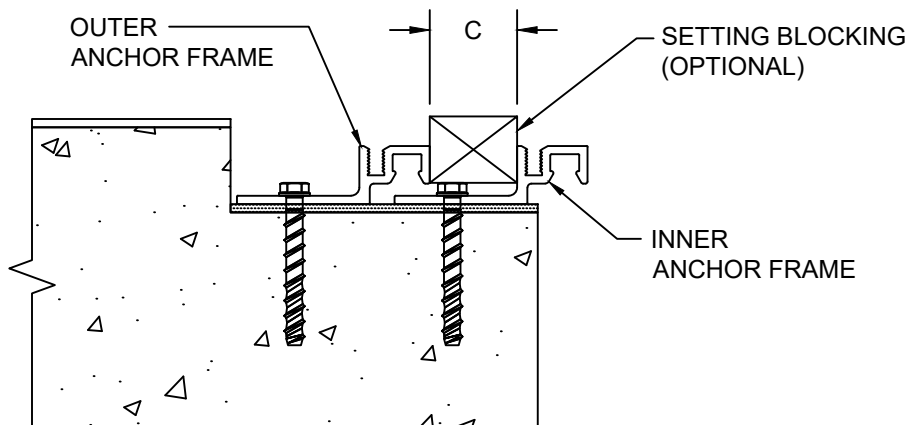
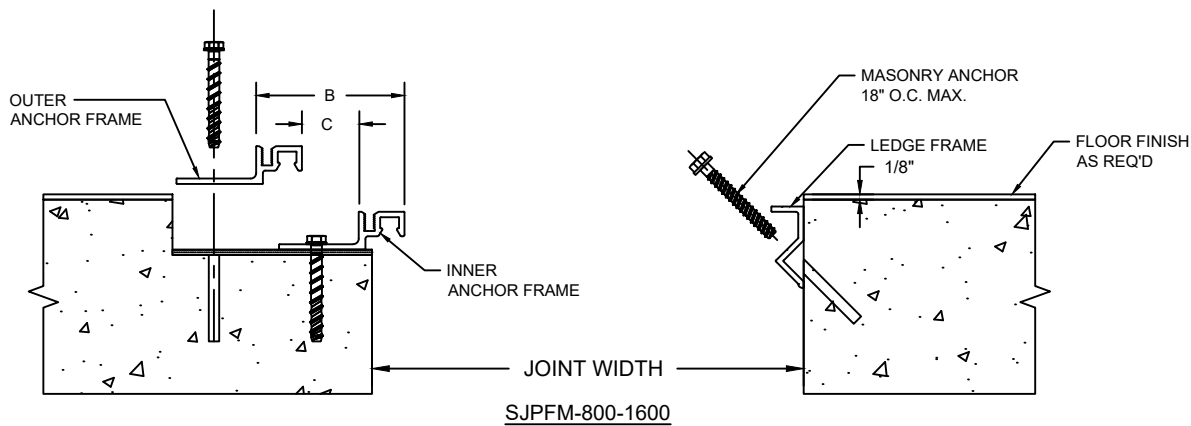
## OUTER ANCHOR FRAME INSTALLATION MODELS 900-1600

- 6.4) See the chart for Dim. "B" to locate the outer Anchor Frame (An optional setting block can be used to locate the correct placement of the outer Anchor Frame using dimension "C" in chart.) Begin installation of the outer Anchor Frame by placing a length of Anchor Frame into the blockout. Cut the Anchor Frame to length as needed. The Anchor frame is to sit level, flat and parallel to the joint edge.
- 6.5) Using the Anchor Frame as a template, mark the locations in the blockout for the anchor bolts. Remove the Anchor Frame and drill the holes for anchor bolts following manufacturer's guidelines. Reposition outer Anchor Frame and bolt to slab with the supplied anchor bolts.
- 6.6) Repeat the installation procedures for any additional lengths of outer Anchor Frame.

# STEP 6 CONT

OUTER ANCHOR FRAME INSTALLATION MODELS 900-1600

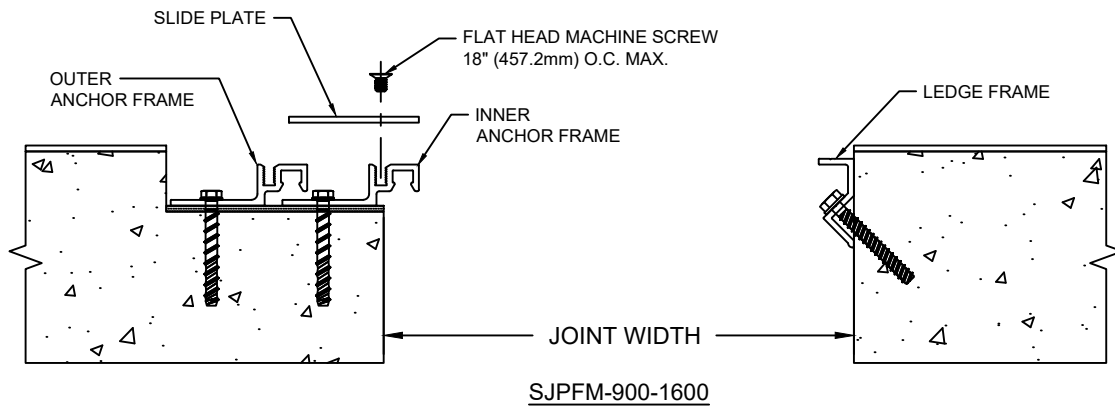
BLOCKOUT DIMENSIONS		
JT. SIZE	DIM. B	DIM. C
9"	3 3/8" [85.7mm]	1 5/16" [33.3mm]
10"	3 3/8" [85.7mm]	1 5/16" [33.3mm]
11"	3 3/8" [85.7mm]	1 5/16" [33.3mm]
12"	3 5/8" [92.1mm]	1 9/16" [39.7mm]
13"	3 7/8" [98.4mm]	1 13/16" [46.0mm]
14"	4 1/8" [104.8mm]	2 1/16" [52.4mm]
15"	4 3/8" [111.1mm]	2 5/16" [61.9mm]
16"	4 5/8" [117.5mm]	2 9/16" [65.1mm]



# STEP 7

## SLIDE PLATE INSTALLATION

Note: Slide Plates are installed on SJPFM models 900-1600.



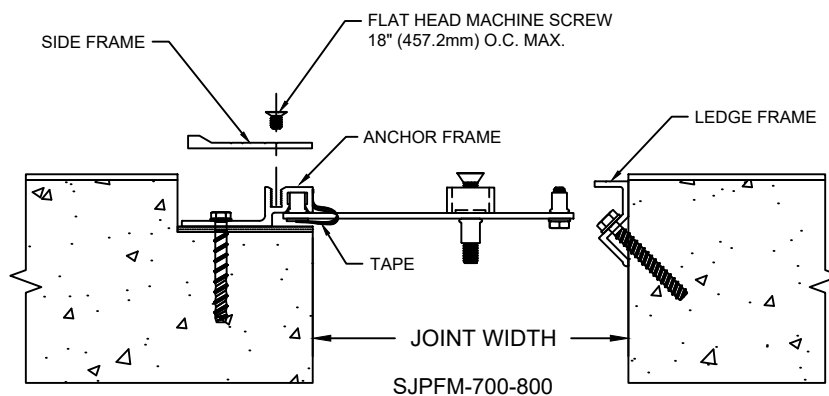
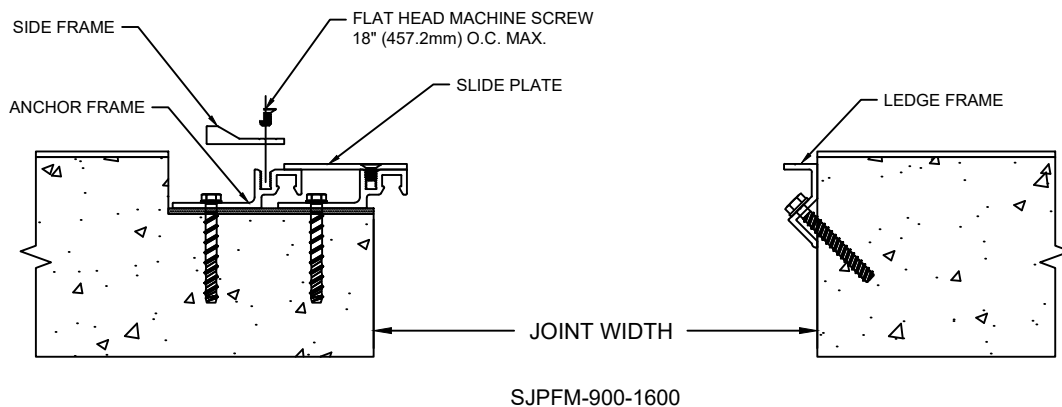
- 7.1) Prepare Slide Plate for installation by first cutting the Plate to length as needed
- 7.2) Position the Slide Plate over the inner Anchor Frame at the joints edge, aligning the end of the Slide Plate with the end of the Inner Anchor Frame. (See detail above)
- 7.3) The Slide Plate is attached to the inner Anchor Frame with the supplied machine screws and rest on the outer Anchor Frame. (See detail above)



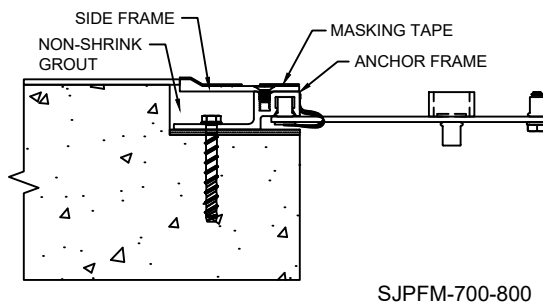
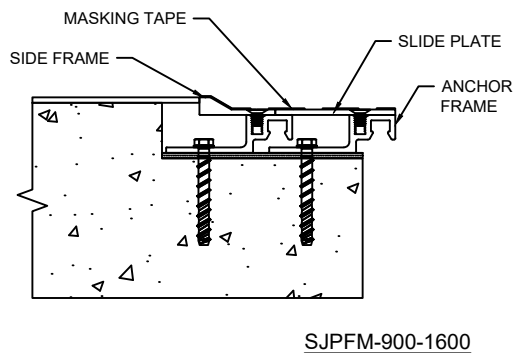
# STEP 8

## SIDE FRAME INSTALLATION

- 8.1) Begin installation of Side Frame by placing a length of the Side Frame onto the Anchor Frame, in the orientation shown above. Cut the Side Frame to length as needed.
- 8.2) Align machine screw holes of the Side Frame with the screw slot of the Anchor Frame. Attach the Side Frame to the Anchor Frame with the supplied machine screws.
- 8.3) Repeat the installation procedures for any additional lengths of Side Frame.

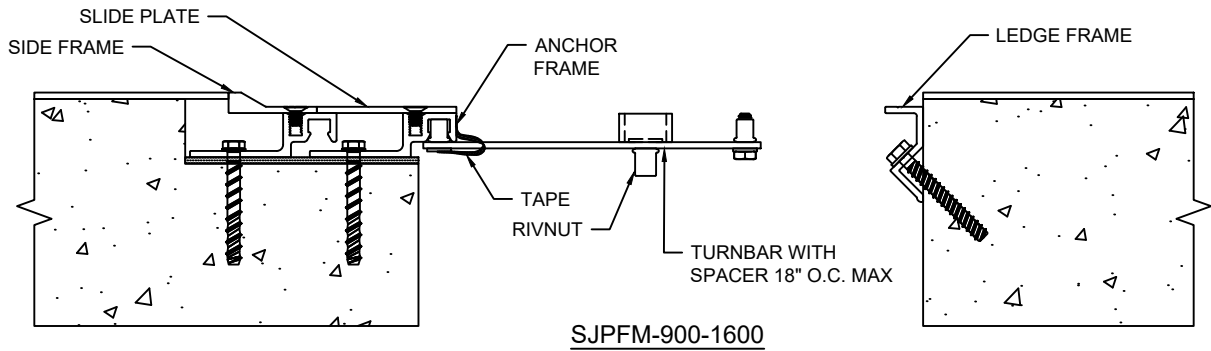


- 8.4) Protect Frames and Slide Plate (models 900-1600) with masking tape.
- 8.5) Apply non-shrink grout in blockout of the expansion joint. The grout must be poured level with the blockout. Remove the tape after grouting.

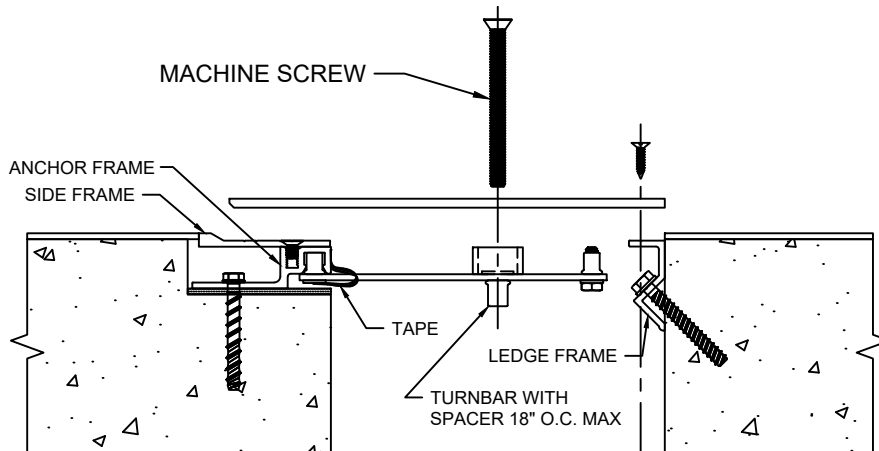
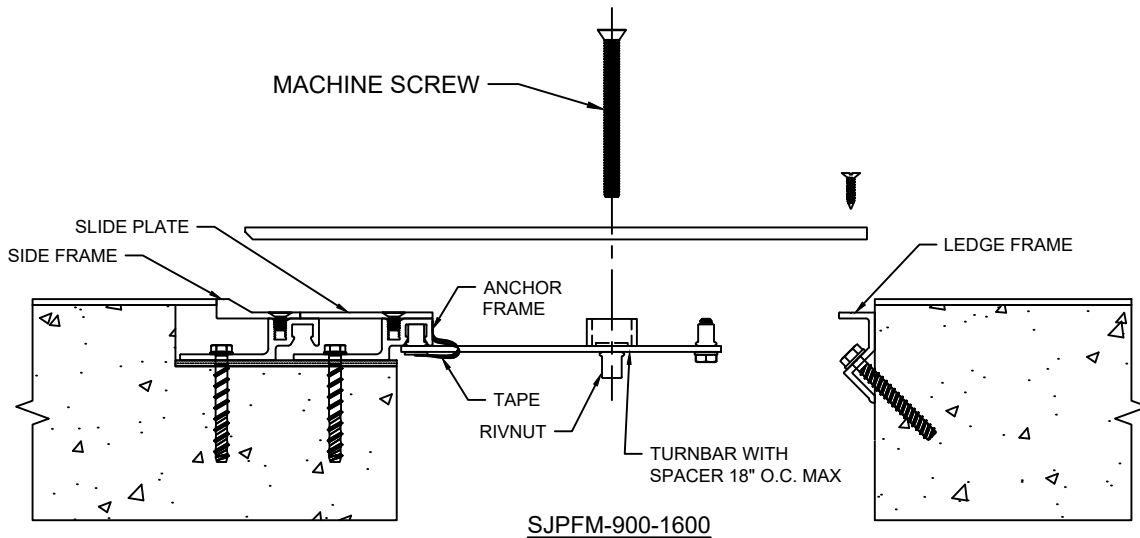


# STEP 9

## TURNBAR/CENTER PLATE INSTALLATION

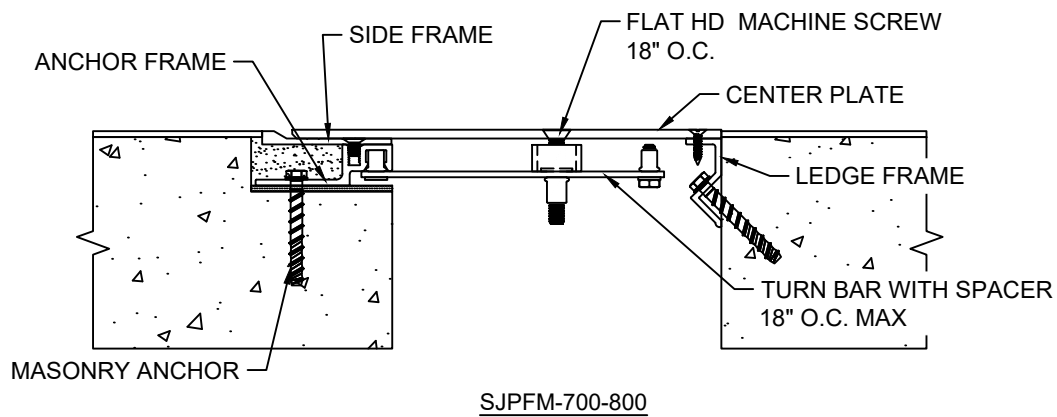
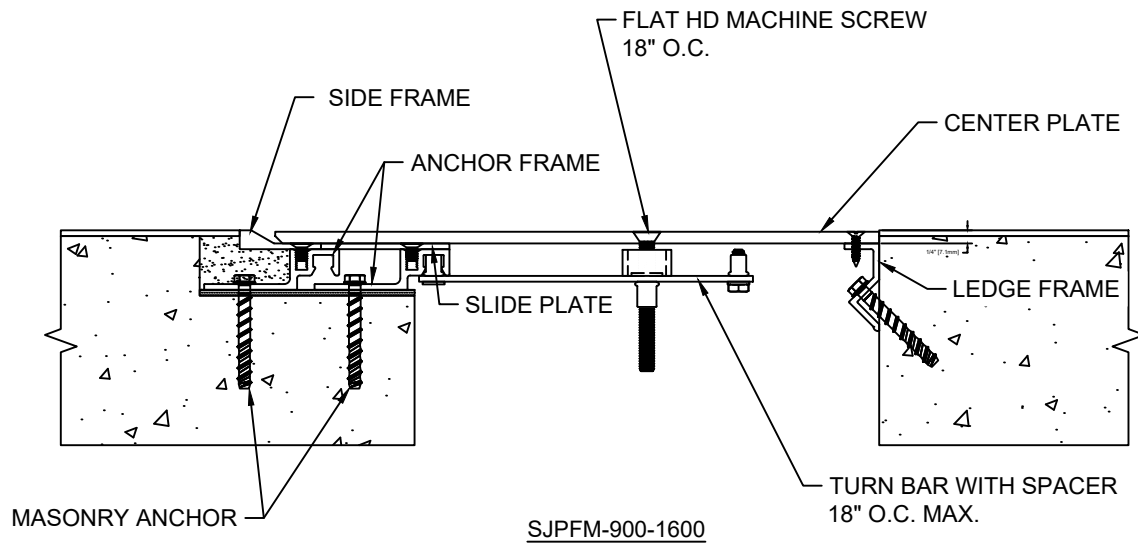


- 9.1) Prepare the Center Plate by first cutting the Plate to length as needed. Using the Center Plate drilled hole locations, measure and mark the Turnbar centerline locations, on frames. Maximum of 18" O.C. between turnbar centerlines.
- 9.2) Place the Turnbar pivot into the pivot pin receiver of the frame and align Turnbar centerline with the marked location on the frame. (Note the orientation of the Turnbars when tightened will rotate in a clock wise motion.) Tape Turnbar in place by attaching tape from the underside of turnbar up and around to the face of the frame. Remove any tape ends that extend above the frame. Repeat installation at each Turnbar centerline location marked on the frame.
- 9.3) Repeat the above steps taping each Turnbar in place at each Turnbar centerline location on the frames.
- 9.4) Position the Center Plate on top of Frame and align the Turnbars with the holes in the Center Plate. Attach Turnbars using the supplied machine screws at 18" O.C. maximum.



# STEP 10

## COMPLETE INSTALLATION



- 10.1) When installation of the Joint Cover has been completed, remove all residue and foreign matter from the area and joint cover.
- 10.2) Clean the CS Joint Cover and adjoining surfaces with proper cleaner.
- 10.3) Protect the Joint Cover until the Architect's final inspection.