

SCR-16SSV CRASH RAIL

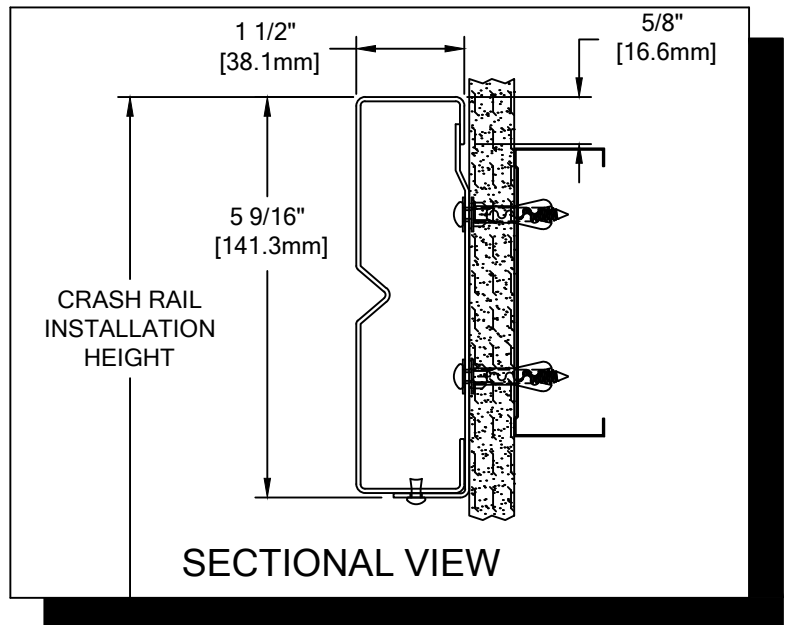
PLEASE READ

PLEASE READ THESE INSTRUCTIONS THOROUGHLY PRIOR TO BEGINNING THE SCR-16SSV CRASH RAIL INSTALLATION!

THIS INSTRUCTION SHEET IS INTENDED TO PROVIDE A SPECIFIC GUIDE TO FOLLOW FOR THE INSTALLATION OF THIS SCR-16SSV CRASH RAIL. CONTAINED WITHIN IS THE TECHNICAL INFORMATION AND INSTALLATION TECHNIQUES REQUIRED TO COMPLETE AN EFFICIENT, NEAT AND LONG-LASTING INSTALLATION.

INSPECT ALL MATERIALS FOR DAMAGE OR MISSING PARTS. IF YOU DISCOVER DAMAGED OR MISSING MATERIALS, IN THE USA PLEASE NOTIFY THE FACTORY AT (800) 233-8493, AND IN CANADA (888) 895-8955 FOR CUSTOMER SERVICE.

SCR-16SSV CRASH RAIL MUST BE INSTALLED IN ACCORDANCE WITH THESE INSTRUCTIONS! FAILURE TO FOLLOW THESE INSTRUCTIONS MAY VOID ANY PRODUCT WARRANTIES AND RESULT IN AN UNSUCCESSFUL INSTALLATION. FOR SPECIFIC QUESTIONS REGARDING THE INSTALLATION OF THIS SCR-16SSV CRASH RAIL PLEASE CALL THE FACTORY IN THE USA AT (800) 233-8493 OR EMAIL IWPTECHSUPPORT@C-SGROUP.COM. IN CANADA CALL (888) 895-8955.

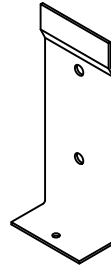
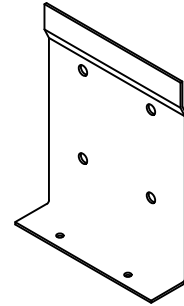


IMPORTANT NOTES

1. THIS MATERIAL HAS BEEN MANUFACTURED TO CUSTOMER SPECIFIED DIMENSIONS AND CAN NOT BE CUT OR MODIFIED ON SITE. TO DO SO COULD VOID THE WARRANTY.
2. ALL DIMENSIONS ARE TYPICAL.
3. FOR DRYWALL/PLASTER WALL CONSTRUCTION, IT IS RECOMMENDED FOR FASTENERS TO BE ENGAGED INTO METAL/WOOD STUDS TO MAINTAIN MAXIMUM PULLOUT STRENGTH. IF DURING INSTALLATION YOU ENCOUNTER SPECIAL WALL CONDITIONS THAT DO NOT ALLOW FOR DIRECT ATTACHMENT TO THE STUDS PLEASE CONSULT THE LOCAL AUTHORITY HAVING JURISDICTION.
4. MATERIAL MUST REACH 65°F MIN. TO 75°F MAX. 24 HOURS PRIOR TO INSTALLATION. THIS IS ESSENTIAL TO MINIMIZE EXPANSION AND CONTRACTION OF MATERIAL.
5. THIS CRASH RAIL REQUIRES A MINIMUM RUN OF 2 1/2" [63.5mm]
6. FOR MORE INFORMATION ON SCR-16SSV CRASH RAIL SEE OUR WEBSITE AT www.c-sgroup.com

SCR-16SSV CRASH RAIL
COMPONENTS & WALL FASTENERS

 SCR-16SSV CRASH RAIL
(24S009000)

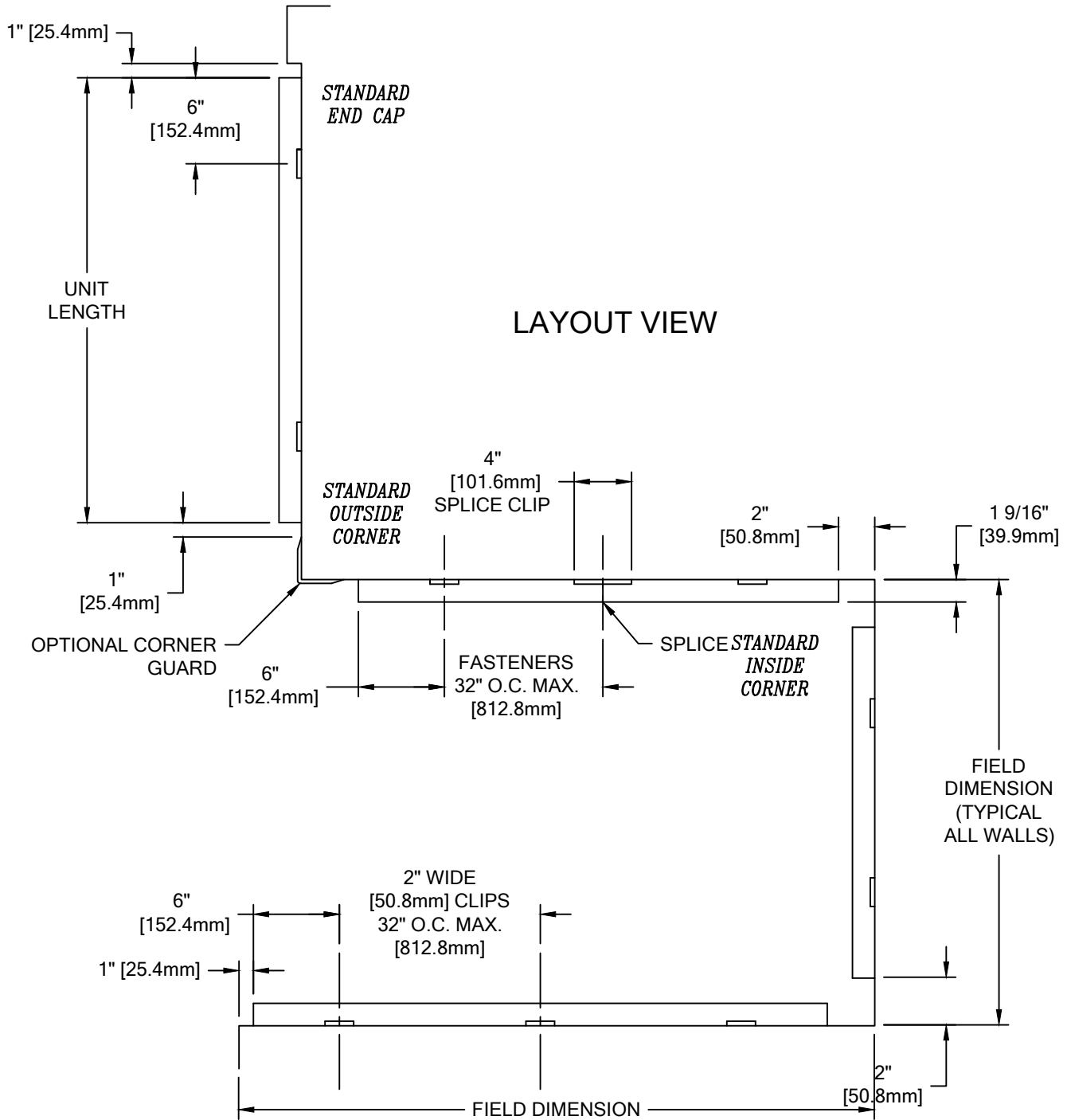
 SCR-16SSP CRASH RAIL
(24S010000)

 2" MOUNTING BRACKET
(24S024000)

 4" MOUNTING BRACKET
(24S025000)

FASTENER #1
 $\frac{1}{8}$ " SIZE 48 POP RIVET
(90H966002)

WALL CONDITION	SPECIFIED FASTENER	DRILL DIAMETERS		CS PART NUMBER
		WALL	RETAINER	
STEEL STUD/GYPSUM WALL	AF-6 PLASTIC ANCHOR #10 X 1-1/2" PHILLIPS PAN HD. SMS	15/64"	N/A	90H453004 90H969002
CONCRETE/CONC. BLOCK	AF-6 PLASTIC ANCHOR #10 X 1-1/2" PHILLIPS PAN HD. SMS	1/4"	N/A	90H453004 90H969002
WOOD STUD/GYPSUM WALL	AF-6 PLASTIC ANCHOR #10 X 1-1/2" PHILLIPS PAN HD. SMS	15/64"	N/A	90H453004 90H969002
20 GA. MIN. STEEL STUD AND 20 GA. MIN. STEEL STRAPPING / GYPSUM WALL CONSTRUCTION REQUIRED (TEK SCREWS)	#6 PHILLIPS PAN HEAD BUGLE HEAD TEK SCREW	N/A	N/A	90H079002

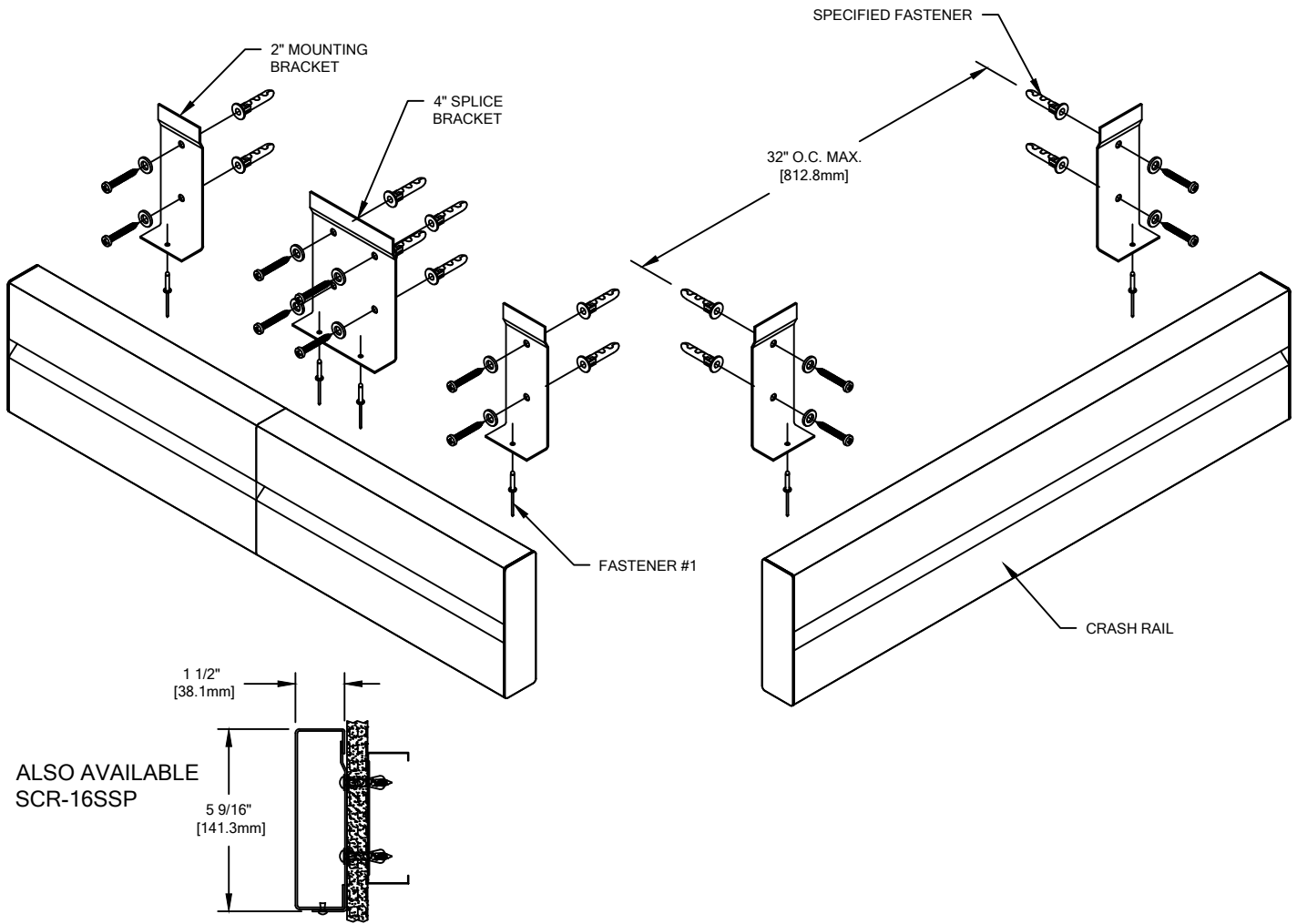
SCR-16SSV CRASH RAIL

LAYOUT VIEW



SCR-16SSV CRASH RAIL

TYPICAL ASSEMBLY



ALSO AVAILABLE
SCR-16SSP

1. ESTABLISH CRASH RAIL HEIGHT ABOVE FINISH FLOOR. DEDUCT 5-9/16" [141.3mm] AND SNAP A CHALK LINE AT THAT HEIGHT. THIS MARKS THE LOWEST POINT OF THE MOUNTING BRACKET.
 2. DETERMINE AND MARK THE LOCATION OF THE CLIPS BY USING THE REQUIRED DEDUCTIONS (SEE LAYOUT VIEW). ALIGN THE BOTTOM EDGE OF THE MOUNTING BRACKET WITH THE CHALK LINE ESTABLISHED IN "STEP 1". USING THE BRACKET AS A TEMPLATE, MARK THE LOCATION OF THE TOP AND BOTTOM FASTENERS. DRILL CLEARANCE HOLES IN WALL SURFACE FOR THE MOUNTING HARDWARE. REFERENCE CHART ON PAGE 2 FOR DRILL DIAMETERS.
 3. SECURE BRACKETS TO THE WALL SURFACE USING THE REQUIRED FASTENERS. USE A LEVEL TO ENSURE BRACKETS ARE PLUMB.
 4. REMOVE PROTECTIVE PLASTIC COATING FROM RAIL FACE.
- NOTE:** BEFORE INSTALLING RAIL, NOTE WHICH IS THE TOP AND WHICH IS THE BOTTOM OF THE CRASHRAIL. THE BACK LEG ON THE TOP WILL BE 5/8" AND THE BOTTOM MAY VARY. THE ORIENTATION OF THE CRASHRAIL IS CRITICAL FOR ALIGNMENT.
5. PLACE CRASH RAIL INTO POSITION BY CLIPPING THE TOP OF THE CRASH RAIL ONTO THE BRACKET, ALLOWING THE BOTTOM OF THE RAIL TO REST ON THE BOTTOM SHELF OF THE BRACKET.
 6. ATTACH CRASH RAIL TO WALL BRACKET:
 - AT EACH BRACKET LOCATION, DRILL A 9/64" HOLE IN THE BOTTOM OF THE RAIL.
 - ATTACH RAIL TO BRACKET USING POP RIVETS PROVIDED.