

# We've Got It Covered

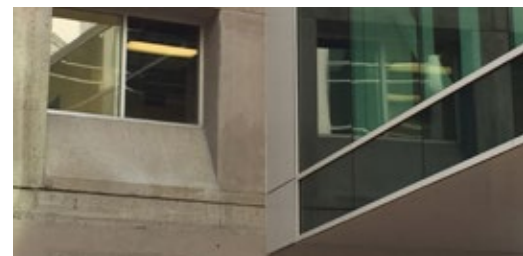
AN EXPANSION JOINT COVER EDUCATIONAL SERIES

## Questions to Ask Before Selection

When choosing an expansion joint cover, it is important to consider the safety, aesthetics, and resilience of the building.

It is essential that the expansion joint cover works properly during thermal, wind sway, settlement and/or seismic movement. Additionally, prior to selection, a full understanding of the environment in which the expansion joint cover will be installed can prevent future problems from occurring. By answering the questions below, you will be better prepared to select the proper expansion joint cover for your project.

- **What is your nominal joint size?**
- **How much are you expecting the joint to open/close?**  
(Example: 6" maximum/2" minimum opening)
- **Is lateral shear movement expected? If yes, how much?**
- **What type of facility is this? (Examples: hospital, airport, school)**
- **Are there any special loading requirements?**  
(Example: heavy rolling loads)
- **What is the construction?**  
(Examples: new to existing, new to new, drywall to CMU, metal panel to EIFS)
- **What is your design vision for the space?**  
(Example: back of house or front of house)
- **Does the joint need to be fire rated or waterproof?**
- **What is your budget?**



Visit [c-sgroup.com/ejc](https://c-sgroup.com/ejc) or call 800.233.8493